

UNIVERSITY HOSPITALS COVENTRY AND WARWICKSHIRE CHARITY



Annual Report and Accounts 2016-17

THURSDAY



A6IDAPZU

A05

02/11/2017

#140

COMPANIES HOUSE

Contents

Advisors	2
Chair of Trustees Report	3
Review of the Year	4
Donations from trusts and foundations and the other significant income	6
Financial Review	11
Structure, Governance and Management	12
Board of Trustees	15
Trustees' Responsibilities in the Preparation of Financial Statements	18
Independent Auditor's Report	19
Statement of Financial Activities for the year ended 31 March 2017	21
Balance Sheet as at 31 March 2017	22
Statement of Cash Flows for the year ended 31 March 2017	23
Notes to the financial statements for the year ended 31 March 2017	24

Advisors

Bankers
Lloyds TSB PLC
High Street
Coventry

Independent External Auditors
KPMG LLP
One Snowhill
Snowhill Queensway
Birmingham
B4 6GH

Investment Advisers
CCLA Investment Management Limited
80 Cheapside
London
EC2V 6DZ

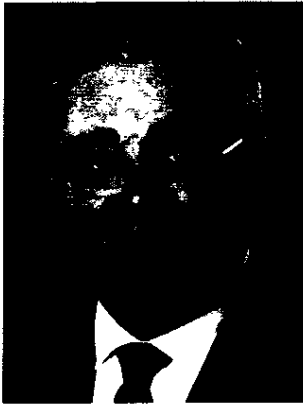
Legal Advisors
Capsticks LLP
1 George's Road
Wimbledon
London
SW19 4DR

Front cover and page 10: Patient in the Children's Emergency Department using the 3D distraction system funded by the Charity

Page 4: Richard Eden who raised money for UHCW Charity by doing a cycle ride

Page 16: Radial Lounge in the Cardiology Unit funded by the Charity

Inside back cover: The Charity Jingle Jog December 2015



Chair of Trustees Report

It is a great pleasure to present the very first Annual Report and Accounts for University Hospitals Coventry and Warwickshire Charity in respect of the year to 31st March 2017.

We reported last year that the Department of Health were encouraging Hospital Charities to become more independent of the NHS Trust which they serve. To that end, this new Charity took over the assets and liabilities of University Hospitals Coventry and Warwickshire NHS Trust Charity with effect from 1st April 2016. By that date we had recruited five independent trustees from around Coventry and Warwickshire to form a majority of the Board alongside four trustees nominated by University Hospitals Coventry and Warwickshire NHS Trust.

The charitable objects of the new Charity remain as before, namely to enhance the experience of the patients and their families who benefit from the services at the hospitals in Coventry and Rugby, and through the local mental health, learning disability and community services provided by Coventry and Warwickshire Partnership Trust. This is achieved through the awarding of grants for the enhancement of facilities, buying furniture and equipment, supporting research projects and assisting staff to attend training courses, all with patient benefit at the forefront of our intentions.

I am grateful to my new colleagues on the Board who have brought a refreshing enthusiasm to the cause and have carried out a strategic review of how the Charity operates. Simply put, we wish to raise the profile of the Charity in the areas in which we operate in order to raise more money and be able to spend more. All this is aimed at improving the experience of patients and their families in matters which are not covered by normal NHS operating budgets. Under the current economic climate we believe that the role of hospital charities will become increasingly important. We are determined to rise to that challenge.

I would also like to thank all the donors, supporters, fundraisers, staff and volunteers who have given their time, money and energy to making this Charity successful. We are also grateful to the number of Trusts and Foundations who generously responded to our appeals during the year.

During the year we said goodbye to Adela Appleby, our Head of Charity for many years, as she decided to take a job nearer to her home. We thank her for her years of dedication and wish her well. In July 2017 we welcomed Eileen Rock as the new Head of Charity and wish her every success in her new role.

Financially, the Charity is in good health. Some £3.5m of net assets were transferred in from the old Charity at the start of the year. To that was added £492,000 of income from donations, trading activity and investments. Grants totalling £704,000 were awarded during the year. Details of many of the projects are shown elsewhere in the report.

Our operating model will remain the same in that donors will be able to identify the particular service or aspect of care, education or research they wish to support. We then work with the appropriate clinical teams to ensure the money is well spent to support the provision of World Class Healthcare to the people of Coventry and Warwickshire.

A handwritten signature in dark ink, appearing to read 'Andrew Meehan'.

Andrew Meehan

Chairman of Trustees, University Hospitals Coventry and Warwickshire Charity

Review of the Year

University Hospitals Coventry and Warwickshire Charity is the independent Charity which supports University Hospitals Coventry and Warwickshire NHS Trust and Coventry and Warwickshire Partnership Trust. The Charity aims to make a real and positive difference to patient care by providing the many extras that cannot solely be provided by the NHS. The key areas of focus include:

- Funding important state of the art medical equipment that makes a real difference to patient care
- Improving surroundings and amenities for patients, families and staff
- Advancing medical knowledge through the funding of research to impact directly on the treatment and care of patients
- Enhancing the knowledge of staff through supporting education, training and staff development
- Working alongside colleagues from the two NHS Trusts we serve to identify future areas for support with the intention of enhancing the experience for our patients and their families during their time in our care.

University Hospitals Coventry and Warwickshire Charity is fortunate to receive charitable donations from a wide range of individuals, corporates, community groups, Trusts and Foundations and truly appreciate the lengths that so many go to help make a difference for the patients and families. Such generosity makes it possible for the Charity to award a number of grants throughout the year.

During 2016-17 the total value of grants awarded was £703,000 (including £292,000 towards the Breast Cancer unit). These grants were distributed over many hospital specialist areas as well as within the community. A breakdown of the actual grants made include:

Care at University Hospitals Coventry and Warwickshire NHS Trust (£317,000)

These grants were awarded at a ward level to support the delivery of world class treatments and care through University Hospital and the Hospital of St Cross.

University Hospital General Awards Programme (£46,000)

During the year, the charity was able to support a range of initiatives and enhance patient care at UHCW through the use of General Fund

Research Funding (£30,000)

The Charity supports the clinical research capacity of UHCW NHS Trust by awarding grants to specific programmed research, leading to development and innovation.

Care at Coventry and Warwickshire NHS Partnership Trust (£20,000)

Grants help to support the delivery of world class treatments and care through mental health, learning disability and community services in Coventry and Warwickshire.

Key achievements during 2016-17 are outlined below:

The Breast Cancer Appeal was completed, raising a total of £440,000. With all capital costs being met, this enabled the new Unit to be built and opened. The Breast Unit is conveniently located within the City of Coventry Health Centre and is furnished with state of the art screening equipment. Coupled with existing services, this new facility has led to the provision of additional capacity, enabling staff to care for more women. In addition, the new Unit has also freed up a mobile screening van to travel into more rural communities throughout the region. This new development means that the breast screening service can now be accessed by more women.

Following a successful campaign, we were also able to complete fundraising for the Children's Emergency Department Appeal. This project will create a more welcoming environment for young patients during a time that can be traumatic. Planning is ongoing with an anticipated completion date of Autumn 2017.

The "Giving Back" Veteran's Appeal was launched, helping to support the rehabilitation of local veterans. The veterans are supported through Coventry and Warwickshire Partnership NHS Trust upon leaving the Armed Forces. Both work through issues including mental health difficulties such as post-traumatic stress disorder, trauma and depression; adjustment into civilian life; and gaining employment. The objective of the "Giving Back" Appeal is to raise funds for projects that the Partnership Trust then delivers.

Trust and Foundation Fundraising

As part of the plan to grow sustainable income, trust and foundations fundraising has generated a total of £53,000. Some of the donations are listed overleaf.

The key appeals to benefit from this generosity included:

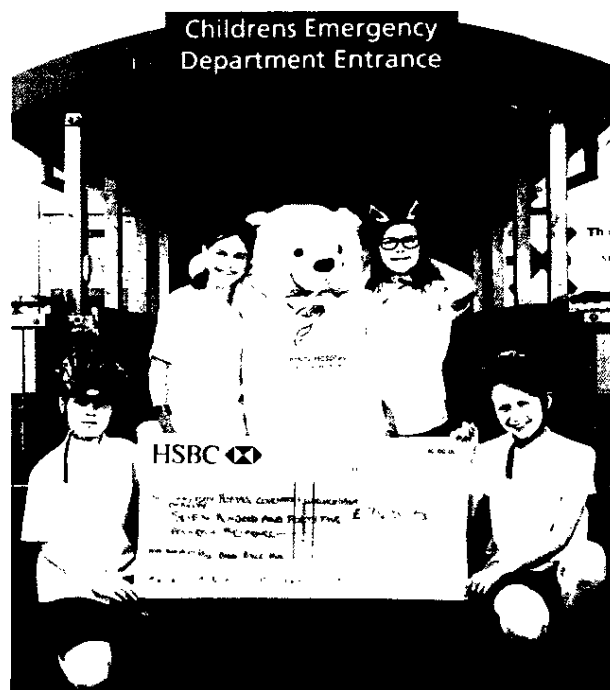
- The Children's Emergency Department Appeal
- The Cath Lab Appeal
- The Dementia Appeal

Trust and Foundation support for our "Healing Arts" and "Healing Sounds" Appeals also enabled our staff to deliver a vibrant and varied programme of events for patients who have to spend long periods of time under our care.

Corporate and Community Support

A number of local companies supported UHCW Charity through the year including Santander, Tesco, DHL NHS Supply Chain, and Schneider Electric. Support was also received from local schools and community groups including Coventry Godiva Leofric Lions Club and Rotary Club Phoenix.

Out in the community, lots of supporters organised a whole host of fundraising events and undertook challenges including four friends from Rugby (Mia Fox, Grace Fox, Evie Collins and Milly Gallacher) who successfully completed a 12-mile ride and raised £745.00 towards our Children's Emergency Appeal.



UHCW NHS Trust staff also continued to involve themselves with fundraising with one group raising over £2,500 for the Children's Emergency Appeal by undertaking the Three Peaks Challenge.



Other highlights included the continued support for the festive season activities.

Local schools and choirs once again, joined us in the hospital reception to sing Christmas carols, helping to raise over £2,500 whilst the popular annual Jingle Jog raised £4,200.

The generosity of local businesses who donated prizes for our annual Christmas Prize Draw helped attract lots of interest resulting in £5,800 being raised towards our Cath Lab Appeal.

Singing continued to feature prominently this year, when a series of summer concerts held in the main hospital atrium not only provided enjoyable entertainment for our patients but also raised an impressive £4,634.

The "Friends of St Cross" continued to support the charity with a full programme of fundraising activities, helping to benefit the patient experience at the Hospital of St Cross, Rugby.

Donations from trusts and foundations and other significant income

In support of the Cath Lab Appeal:

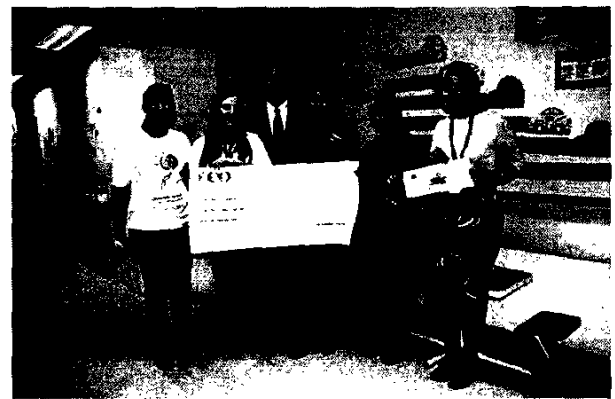


Santander Bank (pictured above)
£8,000

Edith Florence Spencer Memorial Trust
£10,000

Proceeds from Jingle Jog 2016
£4,228

In Support of the Children's Emergency Department (Exterior) Appeal:



Morrisons Foundation (pictured above)
£17,000

Coventry Half Schools Challenge 2016
£7,752

Summer / Festive Music 2016
£4,634

In support of

Healing Arts-Children's Music Programme
Wallace and Gromit's Children's Charity
£6,740

John Horniman Children's Trust
£3,000

Digital Reminisce Therapy Software for
Dementia Patients
General Charity (Coventry)
£7,800

Wheelchairs across University Hospital
Sikh Union
£5,001

Christmas Presents for Older Patients
Volunteers Services University Hospital
£5,000

ITU/Critical Care
Andrew Thornber
£2,200

Hannah Maghazachi
£5,744

Head and Neck
Coventry Godiva Leofric Lions Club
(pictured below)



Funded trolley for laryngeal stroboscope
(£4,100)

Helping Patients and Families in Coventry and Warwickshire

While focus has been on raising funds for the Children's Emergency Department Appeal, many other areas of the hospital have benefited and received donations from grateful patients and families wishing to show their appreciation for the care received while at UHCW.

Some examples of how grants have been used to help patients are listed below:

Patient Welfare:

Wheel Chairs: With limited mobility for many elderly, frail and ill patients, the need for the use of a wheelchair when visiting the hospital for an outpatient appointment is essential. Through a grant, it was possible for an additional 10 new wheel chairs to be purchased for the hospital reception, enabling more patients to be comfortably transported around the hospital.

Healing Arts Programme: Throughout the course of the year, a number of grants have been awarded to support this hospital-based initiative. Such grants have helped keep the Art Cart well-stocked (the mobile cart with a range of art materials which visits various wards), as well as providing artist-led workshops and craft activities. Also, through the funding of music sessions, the stay of many of our patients on the adult wards was improved over the winter months, when a series of musical concerts were brought to their bedsides. These initiatives help to enhance patient well-being, encourage social interaction and help contribute towards patient recovery.



Sensory and Physiotherapy Aids for Children

The Charity has provided funding for a range of sensory and physiotherapy aids, helping to enhance patient care. The purchase of physiotherapy aids means that children with special needs can benefit from good positioning whilst also enabling parents and carers to learn the importance of good posture at home. The addition of individual sensory toys helps children to understand the environment, light, sound and noise through visual and auditory stimulation.



COPD Patient Information Film

Through charitable funding, the Respiratory Team were able to produce an educational film for patients relating to the management of Chronic Obstructive Pulmonary Disease. This film helps to raise awareness of the condition, increase knowledge amongst patients about chronic lung diseases as well as highlight the services available to them. This initiative also provides patients with information on how to pursue a healthy lifestyle and seek expert help.

Mural Artwork Enhancement for Organ Donation

Every year hundreds of lives are saved through organ donation. Hundreds more are changed forever through tissue donations. A grant awarded by the Charity has made it possible to create a mural artwork in recognition of organ donors. The UHCW Organ Donor Memorial Wall, located outside General Critical Care will pay a lasting tribute to those donors and their families who made the gift of life possible.

Valley Cushions and Utensils

For those patients nearing "end of life", mobility and dexterity is greatly reduced, a grant made the purchase of valley cushions and utensils possible. The cushions provide extra support to patient's skin, helping to reduce pressure ulcers, pain and discomfort. Special cutlery has also helped when the ability to eat and drink is reduced

Equipment

Many grants enabled the provision of state of the art equipment, beyond the remit of the NHS and ensure high levels of care to patients. These included:

Ergoline 200p Cycle, Ergometer, Cardio Rehab

Grant Funding of a new state of the art exercise bike for cardiac rehabilitation has made a real difference. The new piece of equipment is being used in the assessment and risk stratification of patients before they start cardiac rehabilitation. With a motorised adjustable seat, this enables easy access for immobile cardiac patients. It also ensures safety and dignity for a growing number of frail and elderly cardiac patients. Displaying automated outward facing blood pressure and heart rate, it also makes it easier for clinicians to record results.



Acuvein Viewing System for Children's Department

For many of our younger oncology and respiratory patients, attending hospital on a weekly basis, the experience of having bloods taken or receiving intra-venous antibiotics can be distressing. Constant cannulation can also make it difficult for staff to detect veins. The recent purchase of an AcuVein Viewing System, through charitable funding, has proven to be an excellent aid in finding veins, reducing the need for several attempts and causing much less discomfort for our younger patients.



Retractors

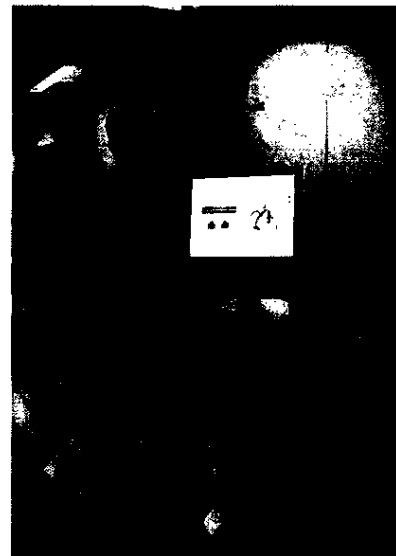
Funding the purchase of 4 new retractors for a number of surgical specialities has enabled surgeons to perform operations in a timelier manner. In turn, helping to improve the experience for many patients whilst reducing stress and anxiety.

Digital Reminiscence Therapy Software

A grant funded an interactive software package to be used by Neurology, Neurosurgery and Neuro Rehabilitation patients. This new innovative system contains a range of items including music, films, puzzles, games and quizzes. Whilst acting as an aid to engage and stimulate patients, it can also help enhance communication between patients and staff.

MiraQ System

The grant-funded new MiraQ system will help have a significant impact on UHCW patients in the future. This new piece of cardio-thoracic equipment is being used to assess blood flow through bypass grafts and enables flow assessment in coronary artery bypass grafts. This new device can also guide surgeons to which graft has blocked should a patient become unstable at the end of an operation.



People and Research

Throughout the year, grants have been given to develop our staff and their wellbeing. Staff from across University Hospitals Coventry and Warwickshire (UHCW) NHS Trust have attended a wide range of courses. The importance of this on-going training is vital and helps to build on existing skills and knowledge. It also

provides the opportunity to keep up-to-date with the latest developments within the various specialities, in turn ensuring that UHCW staff provide the best possible care to patients.

It has also been possible for the Charity to provide financial assistance for the development of teaching tools. Through charitable funding, staff were able to produce an *animated teaching tool*. This new tool demonstrates safe neck collar care for patients and provides a more effective means of delivering guidance to help benefit a wide range of patients across all hospital areas.

Living Donor Study

In 2016-17, the Charity helped fund a number of research programmes. One such project involved providing support for renal research. A grant provided for the “Living Donor” Study will help understand short and long term outcomes of living donations.

Trauma and Orthopaedics

Research grants supported four separate clinical trials to identify improvements in enhancing patient comfort during and post-operatively with nerve blocks and facilitating early discharge as a result.

Financial Review

On the 1st April 2016, the charity took over responsibility for net assets of £3,520,000 from its predecessor NHS charity.

During the course of the year, the Charity:

- received additional funds totalling £492,000 from donations/legacies, fundraising activities and investment income;
- spent £866,000, most of which was in the form of grants payable to the University Hospitals Coventry and Warwickshire NHS Trust and to the Coventry and Warwickshire Partnership NHS Trust; and
- benefited from an unrealised gain of £289,000 on its investment assets.

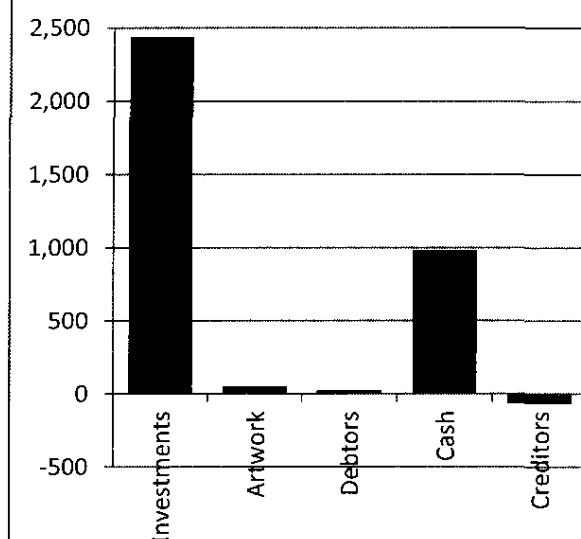
The net movement in total Charity funds was a decrease of £91,000 compared to the funds inherited on 1st April 2016 – giving a closing balance of £3,429,000 as at 31st March 2017.

The majority (98.8%) of the Charity's funds are classified as unrestricted with a year-end value of £3,393,000 with a small balance of £42,000 classified as restricted.

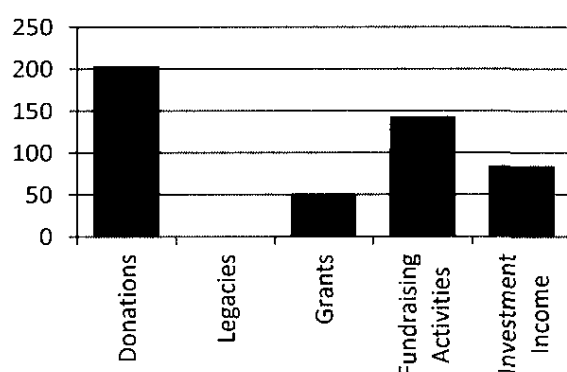
The Charity's continues to hold the majority of its net assets in the form of investments in a common investment fund managed by CCLA with a value of £2,438,000 (71.1% of net assets) at 31st March 2017 and in cash reserves of £983,000 (28.7%).

The charts opposite provide graphical representations of the Charity's balance sheet as at 31st March 2017 and its income and expenditure for 2016/17:

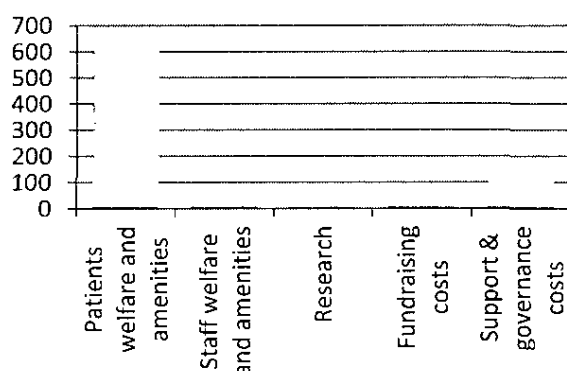
**Charity Balance Sheet
at 31st March 2017
(£'000)**



**Charity Income
2016/17 (£'000)**



**Charity Expenditure
2016/17 (£'000)**



STRUCTURE, GOVERNANCE AND MANAGEMENT

University Hospitals Coventry and Warwickshire Charity (the Charity) is an independent Charity, which exists to support University Hospitals Coventry and Warwickshire NHS Trust and Coventry and Warwickshire Partnership NHS Trust.

It is registered with the Charity Commission (registered Charity Number 1165393) and is also a company limited by guarantee (registered number 9981080).

On 1st April 2016 the Charity took over the net assets and undertaking of our predecessor Charity, University Hospitals Coventry and Warwickshire NHS Trust Charity.

Charitable Objects

The objects and powers of the Charity are set out in the governing documents submitted to the Charity Commission. As the Charity for University Hospitals Coventry and Warwickshire NHS Trust and Coventry and Warwickshire Partnership Trust the Charity will continue to meet the objectives of the predecessor Charity and aims to make things better for patients, their families and the staff who treat them by providing grants to:

- Fund equipment
- Finance research projects
- Provide patient and family support
- Fund staff training, and
- Make healthcare premises friendlier and more welcoming places.

All of this in respect of matters over and above that which is provided from statutory NHS budgets.

A Memorandum of Understanding and Deed of Understanding between the Charity and University Hospitals Coventry and Warwickshire NHS Trust ensures that there is a shared understanding of how the new Charity is to meet its charitable objects.

Board of Trustees

The Charity is governed by a board of nine trustees, a majority of which must be independent of the NHS Trust, which the Charity supports. Therefore, currently four have been nominated by trustees of UHCW NHS Trust and five were recruited through an open and competitive recruitment process. Trustees serve for an initial period of three years, which may be renewed for further terms.

The Chairman for an initial, transitional period of two years is Andrew Meehan, also Chairman of UHCW NHS Trust. Thereafter, the trustees will elect one of their number to serve as Chair.

Brief biographies of trustees are shown on pages 15 to 17.

The trustees also serve as directors of the Company limited by guarantee.

The board meets quarterly and such other times as may be required to transact the business of the Charity.

Upon appointment, directors receive a full induction and are made aware of their responsibilities in respect of the Charity. Members are provided with a copy of the Charity Commission's publication "Charities and Public Benefit" outlining their responsibilities when acting on behalf of the Charity and they are given a briefing document about the Charity, its structure and their role.

Staff

The day to day management of the Charity governance, grant making and fundraising is delegated to the Head of UHCW Charity, supported by a Fundraising Officer and Administrator. The Head of UHCW Charity provides regular reports to the Trustee Board and meets regularly with the Chairman.

The Charity staff are supported by four regular volunteers, who together donate an average of 38 hours a week. The volunteers assist with administration, counting money and they run the weekly hospital book stall. A number of one-off volunteers can be called upon as needed.

Financial responsibilities

The financial responsibilities of the Charity are managed by the Finance Department of University Hospitals Coventry and Warwickshire NHS Trust; including the preparation of month-end fund statements and year-end financial accounts; and quarterly reports to the Trustee Board on the performance of the investments portfolio and financial performance of the Charity. The cost of this service is re-charged to the Charity.

Fund structure

All monies received by the Charity are allocated to an appropriate restricted or unrestricted fund depending upon the donor's wishes. Where there is an express wish of the donor that monies must only be used for a specific purpose, these are placed in a restricted fund. However, where the donor expresses a wish or a preference but without imposing any trust, the funds are placed in a designated fund for that purpose or where appropriate a general purposes fund. The Charity always seeks to spend designated funds on the purpose for which they were given but reserves the

right to use them for alternative purposes if no suitable use is identified.

In addition to the funds related to the services provided by University Hospitals Coventry and Warwickshire NHS trust, the Charity also manages all of the charitable funds that support Coventry and Warwickshire Partnership NHS Trust.

The funds are overseen by Fund Advisors. The majority of Fund Advisors are key clinicians in the two NHS organisations and are best able to advise the Trustee Board on how the donations can be most effectively spent.

Grant making policy

Any staff member can apply for a grant. All grant applications must be supported by a Fund Advisor. A grant request up to £5,000 requires the approval of the Head of Charity. Between £5,000 - £19,999 the approval of the Charity Chairman is required and £20,000 and above, applicants are invited to present their case to a meeting of the Board, whose approval is required.

Reserves policy

The Trustees aim to retain at least the equivalent of two year's income held as a reserve to cover potential grant making and overhead expenditure for twelve months. They recognise its obligation to ensure that income received by the Charity should be spent effectively and promptly in accordance with the funds objects. It is committed to spend at least as much as it receives in income each year, and has in recent years, actively worked with the NHS Trusts to make long-term expenditure plan by identifying projects above this commitment, in order to reduce the reserves. The Board of Trustees receives regular reports on the financial performance

and standing of the Charity including its investment funds, liquid resources and reserves.

The reserves are calculated from unrestricted income funds that are freely available after taking into account funds earmarked for specific projects. This reserve is in the form of readily available bank deposits to meet immediate cash requirements and short to medium term investment funds to provide a mix of income and capital growth for future charitable projects.

The Charity contained no endowment funds at the start of the year and none were received or created during the year. Endowment funds are capital funds invested to produce an income which is then made available to a charity and which the Corporate Trustee is legally required to invest or retain for their purposes.

Investment policy

The Board's investment strategy is to maximise the level of investment income whilst at the same time maintaining (or increasing) the capital investment value of the underlying investments in real terms. Achieving an appropriate balance between these objectives requires subjective judgement and professional advice which is obtained from CCLA.

The Charity currently invests mainly in the Common Investment Fund (COIF) managed by CCLA Investment Management Limited.

The Board has also agreed an ethical investment policy which precludes investments in the direct processing and/or manufacture of tobacco products or armaments, as these are not felt to be in

accordance with the Charity's purposes and objects.

The total value of the investment portfolio at 31 March 2017 is £2,438,000. Gross income from investments is used to help defray operating costs of the Charity. The Trustees receive quarterly reports on the performance of the investment portfolio and continue to review the investment strategy regularly to ensure that the available return is maximised.

Risk statement

During the year, the Board continues to review the major risks to which the Charity is exposed. Significant areas of risk for the Charity are falls in investment income and high commitments in respect of expenditure. These risks are mitigated by the Charity maintaining a varied investment portfolio which includes wider range investments, narrower range investments and bank deposits; having sufficient cash resources to meet its immediate commitments; only committing expenditure once resources are secured; and by having an active fundraising team to generate additional resources.

The Board is also aware that the Charity needs to safeguard its credibility as being beneficial to the local community and endeavours to ensure that the name of the Charity is not linked to any inappropriate fundraising or similar activities and that its conduct is strictly in accordance with its charitable objects, charitable law, and the requirements of the Charity Commission and Fundraising Regulator.

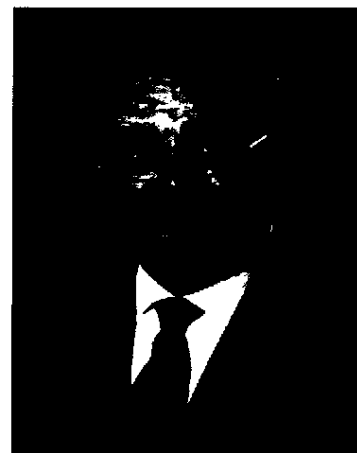
Trustee Biographies

ANDREW MEEHAN – Chairman

Andy is a graduate of Oxford University, a Chartered Accountant and for 30 years enjoyed an executive career mainly in the retail sector, having had roles as Finance Director and Chief Executive of several companies including Selfridges, Mothercare and Co-operative Retail Services.

For the last 10 years, he has had a portfolio of Chairmanships and Non-Executive Directorships across commercial, public and charity sectors. These include GHD, Fortnum and Mason and Myton Hospice.

In addition, he is currently Chairman of Ramsdens Holdings PLC, Direct Healthcare Services Ltd and Mayday Trust, a charity working with people experiencing homelessness. He is also a member of the Board of Governors at Coventry University. He is also Chairman of University Hospitals Coventry and Warwickshire NHS Trust.



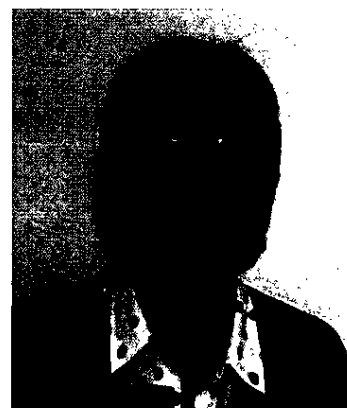
DAVID ELTRINGHAM - Chief Operating Officer (UHCW NHS Trust)

From 1991 onwards David worked in a number of nursing roles at University Hospitals Birmingham. David spent two years working in the private healthcare sector and joined West Midlands Ambulance Service in 2001 as Education and Professional Development Manager then Clinical Lead for NHS Direct (Birmingham the Black Country and Solihull). He joined Birmingham Children's Hospital in 2004, becoming Chief Operating Officer in November 2009, and then joined UHCW NHS Trust as Chief Operating Officer in September 2012.



LINDA ABOLINS – Deputy Chief Nursing Officer (UHCW NHS Trust)

Linda has over 30 years' experience within the NHS as a nurse and midwife and currently works as Deputy Chief Nursing Officer at University Hospitals Coventry and Warwickshire NHS Trust. She has worked in senior nursing and midwifery roles at operational and corporate levels and in both acute and community settings. Linda is experienced in professional practice, integrated governance, patient safety, experience and quality. Linda's academic background includes an MSc with distinction in Healthcare Governance.



IAN BUCKLEY – Non-Executive Director (UHCW NHS Trust)

Ian has worked as Chief executive for a number of UK and US businesses and served on both PLC and private company boards.

Trained as an engineer in Birmingham, moved into finance and leasing and became the UK chief executive of the US leasing giant GELCO (Now a division of GE).

He was part of the management buyout and the subsequent public flotation at Evans Halshaw PLC serving as a main board director.



In 1999 he joined Advanced Communication and Information Systems as CEO, a venture capital backed, telematics business specialising in providing real time passenger information for, airports, buses and trams. He was Deputy Chair and Non-Executive director of Birmingham Community Healthcare NHS Trust. Currently he is a Business Angel investor, business coach and facilitator for Leadership Trust and guest lectures at Bristol Business School.

JACQUI STAUNTON – Independent Trustee

Jacqui Staunton, an Economics and Statistics graduate from the University of York, has worked in Coventry for over 30 years and brought up her family in the City. Jacqui worked at the City Council for 25 years in a variety of roles culminating in the role as Head of the Inward Investment and Tourism.

In more recent years she has followed her passion and now works as a Project Director for Climate Change Solutions, a not for profit company committed to facilitating the move to a low carbon future.



KAREN GRIFFIN – Independent Trustee

Karen Griffin is a Director level OD / HR professional with deep expertise and delivery ability in executive coaching, change management, senior level facilitation, employee engagement, leadership assessment and development and talent management. Karen has 23 years of in-house corporate and consulting experience working in multinational and large organizations, is MBA, MSc, BA (Hons), FCIPD qualified, is an Accredited Ashridge Executive Coach, an Ashridge Associate and Chair of a CIPD Branch.



CLAIRE WILLERS – Independent Trustee

Claire is a former award winning journalist with more than 20 years' experience of working within the media and has held senior roles within both the health and social care sector.

Currently, Claire is the Director of Communications for Longhurst Group, one of the Midlands leading housing and social care providers overseeing the communications and marketing for the Group. With a Masters in Marketing, Claire is passionate about marketing and communications, working in sectors which can truly make a difference to people's lives.



NICK EASTWOOD – Independent Trustee

Nick Eastwood is the Deputy Chairman of Wasps Rugby Football Club and has been on the Board of Directors since 2014. Before his promotion to Deputy Chairman in March 2015, Nick held the position of Wasps CEO and was instrumental in instigating and managing the club's successful move from High Wycombe to Coventry. He played a key role in the process of acquiring the Ricoh Arena and has been the club's public face during and since the move.

Nick, an Oxford graduate, joined Wasps on the back of a successful 12-year spell with the RFU, helping to grow the RFU's net worth from £35m to £180m and profits from a loss of £5m to profit of £15m while playing a key role in steering the governing body through an economic downturn.

Prior to his role with the RFU, the ICAEW-qualified accountant spent five years with The Body Shop International PLC as its Global Head of Corporate Services, and has previously held senior management roles at powerhouse accounting firm Arthur Andersen and Lifetime Corporation USA a \$1bn turnover health care services company.

**AMRIK BHABRA – Independent Trustee**

Amrik is an avid member of the community and has always been keen to encourage links between education, businesses and the community in Coventry and Warwickshire. He is a keen Rotarian, a past president of the Coventry & Warwickshire Chamber of Commerce, a Trustee of the Finham Park MAT, as well as sitting on numerous boards such as the Belgrade Theatre and the Heart of England Community Foundation.

Amrik is an avid sport spectator, and a huge fan of classic cars. He is a well-respected and valued member of the community, with a drive to make a difference and 'give back'. This was widely recognised in 2014 when he was awarded an MBE for his efforts.

**EILEEN ROCK – Head of Charity**

Following a successful career in Pharmaceutical Sales, Eileen has spent the last eight years working for key regional charities, including Acorns Children's Hospice and Birmingham Women's and Children's NHS Foundation Trust. Eileen has just joined UHCW Charity in July 2017 and is looking forward to working with patients, families, staff and supporters over the coming months.



Statement of Trustees' Responsibilities in Respect of the Trustees' Annual Report and the Financial Statements

Under charity law, the trustees are responsible for preparing the Trustees' Annual Report and the financial statements for each financial year which show a true and fair view of the state of affairs of the charity and the charity's] excess of income over expenditure for that period. The trustees have elected to prepare the financial statements in accordance with FRS 102 (*the Financial Reporting Standard applicable in the UK and Republic of Ireland*).

In preparing these financial statements, generally accepted accounting practice entails that the trustees:

- select suitable accounting policies and then apply them consistently;
- make judgments and estimates that are reasonable and prudent;
- state whether the recommendations of the Statement of Recommended Practice have been followed, subject to any material departures disclosed and explained in the financial statements;
- state whether the financial statements comply with the trust deed, subject to any material departures disclosed and explained in the financial statements; and
- prepare the financial statements on the going concern basis unless it is inappropriate to presume that the charity will continue its activities.

The trustees are required to act in accordance with the trust deed of the charity, within the framework of trust law. They are responsible for keeping proper accounting records, sufficient to disclose at any time, with reasonable accuracy, the financial position of the charity at that time, and to enable the trustees to ensure that, where any statements of accounts are prepared by them under the Charities Act 2011, those statements of accounts comply with the requirements of regulations under that Act. They have general responsibility for taking such steps as are reasonably open to them to safeguard the assets of the charity and to prevent and detect fraud and other irregularities.

The trustees are responsible for the maintenance and integrity of the financial and other information included on the charity's website. Legislation in the UK governing the preparation and dissemination of financial statements may differ from legislation in other jurisdictions.

Approved by the Board of Trustees and signed on its behalf by

Signed:



Andrew Meehan
Chair of Trustees
25th October 2017

Independent Auditor's Report

Independent auditor's report to the members of University Hospitals Coventry and Warwickshire Charity

We have audited the financial statements of University Hospitals Coventry and Warwickshire Charity for the year ended 31 March 2017 set out on pages 21 to 35. The financial reporting framework that has been applied in their preparation is applicable law and UK Accounting Standards (UK Generally Accepted Accounting Practice), including FRS 102 *The Financial Reporting Standard applicable in the UK and Republic of Ireland*.

This report is made solely to the charitable company's members, as a body, in accordance with Chapter 3 of Part 16 of the Companies Act 2006. Our audit work has been undertaken so that we might state to the charitable company's members those matters we are required to state to them in an auditor's report and for no other purpose. To the fullest extent permitted by law, we do not accept or assume responsibility to anyone other than the charitable company and its members as a body, for our audit work, for this report, or for the opinions we have formed.

Respective responsibilities of trustees and auditor

As explained more fully in the Statement of Trustees Responsibilities set out on page 18, the trustees (who are also the directors of the charitable company for the purposes of company law) are responsible for the preparation of the financial statements and for being satisfied that they give a true and fair view.

Our responsibility is to audit, and express an opinion on, the financial statements in accordance with applicable law and International Standards on Auditing (UK and Ireland). Those standards require us to comply with the Auditing Practices Board's Ethical Standards for Auditors.

Scope of the audit of the financial statements

A description of the scope of an audit of financial statements is provided on the Financial Reporting Council's website at www.frc.org.uk/auditscopeukprivate.

Opinion on financial statements

In our opinion the financial statements:

- give a true and fair view of the state of the charitable company's affairs as at 31 March 2017 and of its incoming resources and application of resources, including its income and expenditure, for the year then ended;
- have been properly prepared in accordance with UK Generally Accepted Accounting Practice; and
- have been prepared in accordance with the Companies Act 2006.

Opinion on other matters prescribed by the Companies Act 2006

In our opinion the information given in the Trustees' Annual Report, which constitutes the Strategic Report and the Trustees' Report for the financial period is consistent with the financial statements.

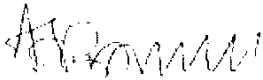
Based solely on the work required to be undertaken in the course of the audit of the financial statements and from reading the Trustees' report:

- we have not identified material misstatements in that report; and
- in our opinion, that report has been prepared in accordance with the Companies Act 2006.

Matters on which we are required to report by exception

We have nothing to report in respect of the following matters where the Companies Act 2006 requires us to report to you if, in our opinion:

- the charitable company has not kept adequate accounting records or returns adequate for our audit have not been received from branches not visited by us; or
- the financial statements are not in agreement with the accounting records and returns; or
- certain disclosures of trustees' remuneration specified by law are not made; or
- we have not received all the information and explanations we require for our audit; or
- the trustees were not entitled to take advantage of the small companies exemption from the requirement to prepare a strategic report.



Andrew Bostock (Partner)
for and on behalf of KPMG LLP, Statutory Auditor
Chartered Accountants
One Snowhill
Snow Hill Queensway
Birmingham
B4 6GH
30 October 2017

Statement of Financial Activities (including Income and Expenditure Account) for the year ended 31 March 2017

		2016/17		
	Note	Un-restricted Funds £000	Restricted Funds £000	Total Funds £000
Income from:				
Donations and legacies	3	261	2	263
Other trading activities	4	143	1	144
Income from Investments	6	84	1	85
Total income		488	4	492
Expenditure on:				
Raising funds	7	(52)	0	(52)
Charitable activities:	8			
Patient welfare and amenities		(757)	(2)	(759)
Staff welfare and amenities		(21)	0	(21)
Research		(34)	0	(34)
Total expenditure		(864)	(2)	(866)
Net income/(expenditure) before gains/(losses) on investments		(376)	2	(374)
Unrealised net gains/(losses) on investments	15.1	289	0	289
Transfers between funds	21	20	(20)	0
Net income/(expenditure) movement in funds		(67)	(18)	(85)
Reconciliation of Funds				
Fund balances transferred from UHCW NHS Trust Charity	22.1	3,460	60	3,520
Total Funds carried forward at 31 March		3,393	42	3,435

The notes on pages 24 to 35 form part of this account.

Balance Sheet as at 31 March 2017

As at 31st March 2017				
	Note	Un- restricted Funds £000	Restricted Funds £000	Total Funds £000
Fixed Assets				
Investments	15	2,438	0	2,438
Heritage assets	16	51	0	51
Total Fixed Assets		2,489	0	2,489
Current Assets				
Debtors	17	30	0	30
Cash and cash equivalents	18	941	42	983
Total Current Assets		971	42	1,013
Creditors: Amounts falling due within one year	19	(67)	0	(67)
Total Current Liabilities		(67)	0	(67)
Net Current Assets / (Liabilities)		904	42	946
Total Assets less Current Liabilities		3,393	42	3,435
Net Assets		3,393	42	3,435
The Funds of the Charity:				
Restricted income funds	22.2		42	42
Unrestricted income funds	22.3	3,393		3,393
Total Charity Funds		3,393	42	3,435

The financial statements (and supporting notes to the statements) on pages 21 to 35 were approved by the Board of Trustees on 25th October 2017.

Signed:



Andrew Meehan

25th October 2017

Statement of Cash Flows for the year ended 31 March 2017

	Note	Total 2016/17 £000
Cash flows from operating activities:		
Net cash provided by (used in) operating activities	20	<u>(616)</u>
Cash flows from investing activities:		
Dividends, interests and rents from investments		<u>85</u>
Net cash provided by (used in) investing activities		<u>85</u>
Change in cash and cash equivalents in the reporting period		<u>(531)</u>
Cash and cash equivalents at the beginning of the reporting period		<u>1,514</u>
Cash and cash equivalents at the end of the reporting period		<u>983</u>

Notes to the financial statements for the year ended 31 March 2017

1 Accounting Policies

1.1 Accounting Convention

a) Basis of Preparation

The Charity constitutes a public benefit entity as defined by FRS 102.

The financial statements have been prepared under the historic cost convention, with the exception of investments which are presented at fair value.

The financial statements have been prepared in accordance with the Statement of Recommended Practice: Accounting and Reporting by Charities preparing their accounts in accordance with the Financial Reporting Standard applicable in the UK and Republic of Ireland (FRS 102) issued on 16 July 2014, the Charities Act 2011 and UK Generally Accepted Practice as it applies from 1 January 2015.

b) Going Concern

The trustees consider that there are no material uncertainties about the Charity's ability to continue as a going concern.

1.2 Transfer of Assets from University Hospitals Coventry and Warwickshire NHS Trust Charity

In March 2014, the Department of Health published a paper entitled "Review of the regulation and governance of NHS charities". This provided NHS charities with the option to transfer their assets to new wholly independent charities regulated solely by the Charity Commission.

The University Hospitals Coventry and Warwickshire NHS Trust decided to convert its linked charity, *University Hospitals Coventry and Warwickshire NHS Trust Charity*, to independent status by the creation of an entirely new organisation; the University Hospitals Coventry and Warwickshire Charity.

It was agreed by a "Deed of Understanding" that the University Hospitals Coventry and Warwickshire NHS Trust Charity would transfer all of its assets (and liabilities) to the University Hospitals Coventry and Warwickshire Charity on 1st April 2016. For the purpose of these financial statements, the transferred assets and liabilities are treated as opening balances.

1.3 Structure of Funds

Where there is a legal restriction on the purpose for which a fund may be used, the fund is classified in the financial statements as a restricted fund.

Funds where the capital is held to generate income for charitable purposes and cannot itself be spent are accounted for as endowment funds. The Charity does not have any such funds.

Other funds are classified as unrestricted funds and include funds which are not legally restricted but which the trustee has chosen to earmark for set purposes (designated funds).

The major funds held as restricted are disclosed in note 22.2, and those that are unrestricted but designated are shown in note 22.3. The Charity has no endowment funds.

1.4 Incoming Resources

a) General

All incoming resources are included in full in the Statement of Financial Activities as soon as the following three factors can be met:

- i) entitlement - arises when a particular resource is receivable or the Charity's right becomes legally enforceable;

Notes to the financial statements for the year ended 31 March 2017 (continued)

- ii) high probability - when it is more likely than not that the incoming resource will be received;
- iii) measurement - when the monetary value of the incoming resources can be measured with sufficient reliability;

b) Legacies

Legacies are accounted for as incoming resources either upon receipt or when the receipt of the legacy becomes probable.

The receipt of a legacy is probable when:

- i) The representatives of the estates have confirmed that probate has been granted
- ii) It has been ascertained by the executors that sufficient assets are available in the estate to pay it
- iii) All conditions attached to it have been met or are within the control of the Charity.

If there is uncertainty as to the amount of the legacy and it cannot be reliably estimated then the legacy is shown as a contingent asset (note 24) until all of the conditions for income recognition are met.

1.5 Resources Expended

a) General

All expenditure is accounted for on an accruals basis and has been classified under headings that aggregate all costs related to each category of expense shown in the Statement of Financial Activities. Expenditure is recognised when the following criteria are met:

- i) There is a present legal or constructive obligation resulting from a past event
- ii) It is more likely than not that a transfer of benefits (usually a cash payment) will be required in settlement
- iii) The amount of the obligation can be measured or estimated reliably.

Irrecoverable VAT is charged against the category of resources expended for which it was incurred.

b) Grants payable

Grants payable are payments made to third parties (including NHS bodies) in the furtherance of the charitable objectives of the funds held on trust, primarily relief of those who are sick.

Grant payments are recognised as expenditure when the conditions for their payment have been met or where there is a constructive obligation to make a payment.

A constructive obligation arises when the Charity:

- i) Has communicated its intention to award a grant to a recipient who then has a reasonable expectation that they will receive a grant
- ii) Has made a public announcement about a commitment which is specific enough for the recipient to have a reasonable expectation that they will receive a grant
- iii) Has established a pattern of practice which indicates to the recipient that it will honour its commitment.

The trustees have control over the amount and timing of grant payments and consequently where approval has been given by the trustees and any of the above criteria have been met then a liability is recognised. Grants are not usually awarded with conditions attached. However, when they are then those conditions have to be met before the liability is recognised.

Where an intention has not been communicated, then no expenditure is recognised but an appropriate designation is made in the appropriate fund. If a grant has been offered but there is uncertainty as to whether it will be accepted or whether conditions will be met then no liability is recognised but a contingent liability is disclosed.

Notes to the financial statements for the year ended 31 March 2017 (continued)

c) Allocation of overhead and support costs

Support costs are those costs which do not relate directly to a single activity. These include staff costs, administrative expenses, finance and accounting services, internal and external audit costs and IT systems/support. Support costs have been apportioned between fundraising costs and charitable activities on an appropriate basis and are analysed in note 11.

d) Fund raising costs

The costs of generating funds are those costs attributable to generating income for the Charity and include staff and expenses related to fundraising activities and fees paid to external fundraising advisors.

Fundraising costs exclude those costs incurred in undertaking charitable activities and the costs incurred in undertaking trading activities in furtherance of the Charity's objects. Costs of the Charity's investment managers are met from the investments and are not separately identifiable and are not therefore recorded as fundraising costs.

e) Charitable activities

Costs of charitable activities comprise all costs incurred in the pursuit of the charitable objects of the Charity. These costs, where not wholly attributable, are apportioned between the categories of charitable expenditure in addition to the direct costs. The total costs of each category of charitable expenditure therefore include support costs, as shown in note 8.

1.6 Fixed Assets

a) Fixed Asset Investments

Fixed asset investments are initially recognised at their transaction value and are subsequently measured at their fair value (market value) as at the balance sheet date. The Statement of Financial Activities includes the net gains and losses arising on revaluation and disposals throughout the year.

Quoted stocks and shares are included in the balance sheet at mid-market price, ex-dividend; and other investment fixed assets are included at the Trustee's best estimate of market value.

The main form of financial risk faced by the Charity is that of volatility in equity markets and investment markets due to wider economic conditions, the attitude of investors to investment risk, and changes in sentiment concerning equities and within particular sectors or sub sectors.

Further information on the Charity's investments can be found at note 15.

b) Fixed Asset Heritage Assets

The Charity owns a number of pieces of artwork which are on long term loan to University Hospitals Coventry and Warwickshire NHS Trust, and are displayed in the Trust's hospital buildings in order to enhance the patient environment.

1.7 Other Assets and Liabilities

a) Debtors

Debtors are amounts owed to the Charity. They are measured on the basis of their recoverable amount.

b) Cash and Cash Equivalents

Cash at bank and in hand is held to meet the day to day running costs of the Charity as they fall due. Cash equivalents are short term, highly liquid investments, usually in 90 day notice interest bearing savings accounts.

Notes to the financial statements for the year ended 31 March 2017 (continued)

c) Creditors

Creditors are amounts owed by the Charity. They are measured at the amount that the Charity expects to have to pay to settle the debt. Amounts which are owed in more than a year are shown as long term creditors.

1.8 Realised Gains and Losses

All gains and losses are taken to the Statement of Financial Activities as they arise and are calculated as follows:

- i) Realised gains/losses: difference between sales proceeds and opening carrying value (purchase date if later)
- ii) Unrealised gains/losses: difference between the market value at the year end and opening carrying value (or purchase date if later)..

1.9 Staffing/Pensions

At the start of the financial year, the Charity's staff were employed by University Hospitals Coventry and Warwickshire NHS Trust and seconded to the Charity. These staff all left before the end of the financial year and the Charity has no ongoing liabilities in respect of these staff.

The Charity now directly employs all of its staff, with payroll administration outsourced to TGFP. The Charity does not currently operate a pension scheme but will be required to offer a workplace pension to its employees by its staging date of 1st November 2017

1.10 Accounting Judgements and Key Assumptions

There are no significant judgements that management has made in the process of applying the Charity's accounting policies.

There are no key assumptions concerning the future, nor other key sources of estimation uncertainty which have a significant risk of causing a material adjustment to the carrying amounts of assets and liabilities within the next reporting period

2 Related Party Transactions

During the year none of the Trustees or members of the key management staff or parties related to them has undertaken any material transactions with the University Hospitals Coventry and Warwickshire Charity.

The main beneficiary of the Charity are patients of University Hospitals Coventry and Warwickshire NHS Trust and Coventry and Warwickshire Partnership NHS Trust.

During the year the Charity has made Charitable Grants to University Hospitals Coventry and Warwickshire NHS Trust and Coventry and Warwickshire Partnership NHS Trust £683,375 and £20,425 respectively and these are detailed in note 9. The Charity has made no grants to any other organisation.

As at 31st March 2017, an amount of £68,383 was owed by the Charity to the University Hospitals Coventry and Warwickshire NHS Trust for grants payable, finance and administration services.

During the year, five trustees of the Charity (although only four at any one time) were directors or employees of University Hospitals Coventry and Warwickshire NHS Trust. In addition, the Charity procured services from University Hospitals Coventry and Warwickshire NHS Trust in respect of seconded Charity staff and financial services/accounting support.

Notes to the financial statements for the year ended 31 March 2017 (continued)

3 Analysis of Income from Donations and Legacies

	Unrestricted Funds £000	Restricted Funds £000	Total 2016/17 £000
Donations	202	2	204
Legacies	7	0	7
Grants	52	0	52
	261	2	263

Donations include monies received from patients, staff, members of the public and organisations through unsolicited donations and collection boxes.

Grants include monies received from applications made to grant giving trusts and foundations.

4 Analysis of Income from Other Trading Activities

	Unrestricted Funds £000	Restricted Funds £000	Total 2016/17 £000
Charity Events	56	0	56
In Aid Of Events	56	1	57
Gift aid on sponsorship income	6	0	6
Games of Chance	4	0	4
Trading	21	0	21
	143	1	144

Charity events include monies from events organised by staff such as the Jingle Jog.

In aid of events includes monies raised by supporters of the Charity through their own events.

Gift aid on sponsorship is the gift aid claimed on both charity events and in aid of events

Trading is the sale of charity teddy bears, key rings and t-shirts as well as donated goods from local retailers.

5 Role of Volunteers

Volunteers support the Charity by assisting with a variety of administrative and fundraising tasks including office duties, counting cash and running book sales.

6 Gross Income From Investments

	Unrestricted Funds £000	Restricted Funds £000	Total 2016/17 £000
Fixed asset equity and similar investments	51	0	51
Short term investments and deposits and cash on deposit	33	1	34
	84	1	85

7 Analysis of Expenditure on Raising Funds

	Unrestricted Funds £000	Restricted Funds £000	Total 2016/17 £000
Fundraising office	42	0	42
Fundraising events	7	0	7
Fundraising support and advice	3	0	3
	52	0	52

Notes to the financial statements for the year ended 31 March 2017 (continued)**8 Analysis of Charitable Expenditure**

The Charity did not undertake any direct charitable activities on its own account during the year. All of the charitable expenditure was in the form of grant funding.

The majority of grants were made to University Hospitals Coventry and Warwickshire NHS Trust and the Coventry and Warwickshire Partnership NHS Trust

	Grants Funded 2016/17 £000	Support Costs 2016/17 £000	Total 2016/17 £000
Patients welfare and amenities	656	103	759
Staff welfare and amenities	18	3	21
Research	30	4	34
	704	110	814

9 Analysis of Grants

The Charity does not make grants to individuals. All grants are paid to NHS organisations or other organisations to provide care for NHS patients in furtherance of the charitable objectives.

The trustees operate a scheme of delegation for the majority of funds under which fund advisors manage expenditure from those funds in accordance with guidance approved by the trustees.

	Grants Funded 2016/17 £000	Number of Grants 2016/17
University Hospitals Coventry and Warwickshire NHS Trust	684	81
Coventry and Warwickshire Partnership NHS Trust	20	22
	704	103

10 Movements in Funding Commitments

The table below analyses the movement in funding commitments during the year.

	Current Liabilities 31/03/2017 £000	Non-Current Liabilities 31/03/2017 £000	Total 31/03/2017 £000	Total 31/03/2016 £000
Opening balance (1 April)	0	0	0	0
Additional commitments made in year	704	0	704	0
Amounts paid during the year	(665)	0	(665)	0
Closing balance (31 March)	39	0	39	0

The analysis of creditors above only includes those sums relating to grants payable and excludes creditors related to operating costs. The sums analysed will not therefore balance to figures shown on the face of the balance sheet nor to the totals in the analysis of creditors in note 19.

Notes to the financial statements for the year ended 31 March 2017 (continued)**11 Allocation of Support Costs and Overheads**

Support and overhead costs include governance and administrative costs but exclude the direct costs of fundraising activities.

Governance costs are those support costs which relate to the strategic and day to day management of a charity.

Support and overhead (including governance) costs are allocated on the following basis:

- a) Governance costs are apportioned between fundraising activities and charitable activities
- b) Costs relating to the administration of grants are charged to charitable activities.

Costs are apportioned directly to the appropriate category where possible, otherwise they are apportioned between categories on an appropriate basis (e.g. time spent)

Costs are apportioned to funds on a monthly basis in proportion to fund balances.

	Raising Funds £000	Charitable Activities £000	Total 2016/17 £000	Basis
External audit	0	7	7	Expenditure
Charity team	4	61	65	Time
Finance team	1	24	25	Time
Other costs	0	18	18	Expenditure
Total	5	110	115	

	Unrestricted Funds £000	Restricted Funds £000	Total 2016/17 £000
Raising funds	5	0	5
Charitable activities	108	2	110
	113	2	115

12 Trustee Remuneration, Benefits and Expenses

No remuneration, benefits nor expenses were payable to the Charity trustees. However, the Charity did take out a trustee indemnity insurance policy in 2016/17.

Notes to the financial statements for the year ended 31 March 2017 (continued)

13 Analysis of Staff Costs and Remuneration of Key Management Personnel

The Charity staff costs and remunerations included the charges from the University Hospitals Coventry and Warwickshire NHS Trust, agency staff costs and directly employed staff costs.

	2016/17 £000
Seconded staff	53
Salaries and wages (directly employed)	29
	<u>82</u>

14 Auditor's Remuneration

The auditor's remuneration for 2016/17 was £7,200 including VAT

15 Fixed Asset Investments**15 Movement in Fixed Asset Investments**

	2016/17 £000
Opening balance (UHCW NHS Trust Charity transfer)	2,149
Add: net gain/(loss) on revaluation	289
Market value at 31 March	<u>2,438</u>

15 Fixed Asset Investments by Type

	2016/17 £000
CCLA COIF - Investment Fund	2,106
CCLA COIF - Fixed Interest Fund	332
Total	<u>2,438</u>

The CCLA COIF - Investment Fund is a common investment investment fund managed by CCLA which has a mixed portfolio of investments - the funds asset allocation as at 31st March 2017 included:

UK equities	26.3%
Overseas equities	50.4%
Infrastructure and operating assets	9.1%
Other	14.2%

The CCLA COIF - Fixed Interest Fund is a common investment investment fund managed by CCLA which has a mixed portfolio of investments - the funds asset allocation as at 31st March 2017 included:

Gilts	45.1%
Non-Gilts	54.5%
Other	0.4%

Notes to the financial statements for the year ended 31 March 2017 (continued)

16 Heritage Assets

	2016/17 £000
Opening balance (UHCW NHS Trust Charity transfer)	51
Historic cost at 31 March	51

Heritage assets comprise artwork previously classified as an investment asset and valued at market value.

17 Analysis of Current Debtors

	Total at 31 March 2017 £000
Amounts falling due within one year:	
Amounts owed by associated undertakings*	23
Prepayments and Accrued Income	7
Total debtors	30

* The associated undertaking is University Hospitals Coventry and Warwickshire NHS Trust

18 Analysis of Cash and Cash Equivalents

	UHCW NHS Trust Charity Transfer £000	Movement in Year £000	Total at 31 March 2017 £000
Cash in hand and at bank	1,514	(531)	983
Total cash and cash equivalents	1,514	(531)	983

19 Analysis of Creditors

	Total at 31 March 2017 £000
Amounts falling due within one year:	
Amounts owed to UHCW NHS Trust*	28
Accruals for grants payable	39
Total creditors	67

* these sums relate to creditors inherited from UHCW NHS Trust Charity upon transfer of that charity's net assets to the Charity on 1st April 2016. These are expected to be cleared during 2017/18.

Notes to the financial statements for the year ended 31 March 2017 (continued)

20 Reconciliation of net income / (expenditure) to net cash flow from operating activities

	2016/17 £000
Net income/(expenditure) for 2016/17 (as per the Statement of Financial Activities)	(374)
Adjustments for:	
Dividends, interests and rents from investments	(85)
(Increase)/decrease in debtors	19
Increase/(decrease) in creditors	(176)
Net cash provided by (used in) operating activities	<u>(616)</u>

21 Transfers Between Funds

Transfers between funds usually occur when fund advisors identify separate funds with similar objectives, and those funds could potentially be merged into one.

22 Analysis of Funds

22.1 Reconciliation of Total Fund Movements

	UHCW NHS Trust Charity Transfer*	Income £000	Expenditure £000	Inter-Fund Transfers £000	Gains and Losses £000	Balance c/f £000
Restricted funds	60	4	(2)	(20)	0	42
Unrestricted funds	3,460	488	(864)	20	289	3,393
Total	3,520	492	(866)	0	289	3,435

*The UHCW NHS Trust Charity transferred all of its assets to the Charity on 1st April 2016

22.2 Analysis of Restricted Funds Movements

	UHCW NHS Trust Charity Transfer	Income £000	Expenditure £000	Inter-Fund Transfers £000	Gains and Losses £000	Balance c/f £000
Name of Fund	£000	£000	£000	£000	£000	£000
A Brooklands General Purpose	20	1	(1)	(2)	2	20
B Aggregate of other funds	40	3	(1)	(18)	(2)	22
Total	60	4	(2)	(20)	0	42

Description of Nature and Purpose of Fund

- A Support healthcare services provided at Brooklands Hospital, Marston Green, Birmingham
- B Other funds supporting mental healthcare provided by Coventry and Warwickshire Partnership NHS Trust

Notes to the financial statements for the year ended 31 March 2017 (continued)

22.3 Analysis of Unrestricted Funds Movements

Name of Fund	UHCW NHS Trust Charity Transfer	Income	Expenditure	Inter-Fund Transfers	Gains and Losses	Balance c/f
	£000	£000	£000	£000	£000	£000
A Cardiology	346	11	(10)	(9)	34	372
B General St Cross Hospital	230	9	(36)	(2)	17	218
C Ophthalmology General Care Fund	171	5	(5)	(5)	17	183
D General Surgery	308	6	(129)	(5)	3	183
E Neonatal Department Trust Fund	160	27	(26)	1	16	178
F Jeremy Pilcher (Dr) Memorial Fund	135	4	(4)	2	14	151
G Respiratory	159	5	(23)	(3)	12	150
H Cancer Ward Fund Walsgrave (oncology)	122	19	(21)	(1)	12	131
I Intensive and Critical Care	55	53	(6)	3	16	121
J General Research (Innovation and Devel	107	2	(12)	4	3	104
K General UH	92	47	(55)	3	8	95
L Young People and Children's Services	66	18	(9)	0	9	84
M Paediatric Trust Fund	62	2	(2)	2	6	70
N Breast Care Fund	20	3	(2)	36	10	67
O Neurosurgery	33	36	(12)	(1)	9	65
P Renal Care and Dialysis	37	12	(2)	3	6	56
Q Haematology Development Fund	33	13	(6)	5	8	53
R Neurology and Neuro Rehab	51	6	(12)	0	4	49
S Heart Research Fund Walsgrave	42	1	(1)	1	4	47
T Dermatology Trust Fund	41	2	(1)	0	4	46
Other unrestricted funds	1,190	207	(490)	(14)	77	970
Total	3,460	488	(864)	20	289	3,393

Description of Nature and Purpose of Fund

- A To enhance the care of patients by funding new services, facilities
- B Improving patient care as well as staff welfare and training
- C To enhance the care of patients by funding new equipment and services
- D To enhance the care of patients by funding new IT equipment
- E To improve patient care, patient and facilitate staff training and development
- F Research and development, and Clinical Facilities For Cardiac Patients
- G To enhance the care of patients by funding new services, equipment
- H Benefit of patients & staff within Cancer Services
- I To enhance the care of patients by funding new services, facilities
- J Research and education
- K For general patient and staff welfare
- L To fund the capital works for a new screening and mammography centre in the City of Coventry
- M To promote paediatric research for non-commercial reasons
- N To fund the capital works for a new screening and mammography centre in the City of Coventry
- O To enhance the care of patients by funding new equipment and services
- P To enhance the care of patients by funding new equipment and services
- Q Research into kidney failure and its treatment inc equipment
- R To enhance the care of patients by funding new services, equipment,
- S R&E activities for understanding & management of cardiovascular disease
- T To foster research in dermatology for patient benefit and improve facilities available to staff

The above funds have been accepted by the UHCW Charity without trust being imposed and hence are classified as unrestricted. However, the Trustees have determined that the funds will be designated for particular purposes in order to satisfy (as closely as possible) the donors' stated preferences as to how the funds should be expended.

Notes to the financial statements for the year ended 31 March 2017 (continued)**23 Analysis of Other Gains and Losses**

During 2016/17, there were no other gains and losses incurred.

24 Contingencies

There were no contingent (losses)/gains included in the financial statements for the year.

25 Connected Organisations

Name, nature of connection, and description of activities undertaken	2016/17	
	Turnover of Connected Organisation	Net Deficit for the Connected Organisation
	£000	£000
University Hospitals Coventry and Warwickshire NHS Trust, a major acute teaching hospital primarily serving the community of Coventry and Warwickshire.	608,790	703

Whilst the University Hospitals Coventry and Warwickshire NHS Trust was the main beneficiary of Grants made by the Charity during the year, Charitable Grants were also made to the Coventry and Warwickshire Partnership NHS Trust.

University Hospitals Coventry and Warwickshire Charity
Main Reception
University Hospital
Clifford Bridge Road
Coventry
CV2 2DX

Tel: 02476 966055
Email: uhcwcharity@uhcw.nhs.uk
Website www.uhcwcharity.org

Registered Charity Number 11165393
Registered Company Number 9981080