

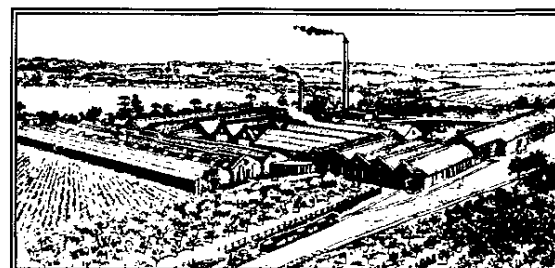
TEL: (01621) 815407
FAX: (01621) 814555



E-MAIL: tiptree@tiptree.com
WEB SITE: www.tiptree.com



STRAWBERRY PICKING



THE TIPTREE JAM FACTORY

THE COMPANY OWNS A FREEHOLD ESTATE OF ABOUT 1,000 ACRES AND GROWS MANY CHOICE VARIETIES OF FRUIT SELECTED FOR THEIR FINE FLAVOUR.



WORLD FAMOUS MAKERS OF THE FINEST QUALITY PRESERVES AT THE TIPTREE FACTORY SINCE 1885.

Tiptree Patisserie Limited
Trewlands Farm
Tiptree
Essex
CO5 0RF

Companies House
Crown Way
Cardiff
CF14 3UZ

Dear Sirs

Re: Tiptree Patisserie Limited audit exemption in accordance with S479a Companies Act 2006 (company number 05544329)

All of the members of Tiptree Patisserie Limited, being a 100% subsidiary of Wilkin & Sons Limited, a company incorporated under the laws of the United Kingdom, registered with Companies House under registration number 00026233 and with its registered office at the address noted above, duly represented by the authorized person below, agree to the audit exemption, under s479A of the Companies Act 2006, of Tiptree Patisserie Limited, in respect of the financial year ended 31 December 2022.

Signed for and on behalf of Wilkin & Sons Limited - Registered number 00026233 (100% parent company of Tiptree Patisserie Limited)

Name:

A handwritten signature in dark ink, appearing to be "T. J. Wilkin".

Title: Member of the Board of Directors of Wilkin & Sons Limited

Date: 26th May, 2023

