

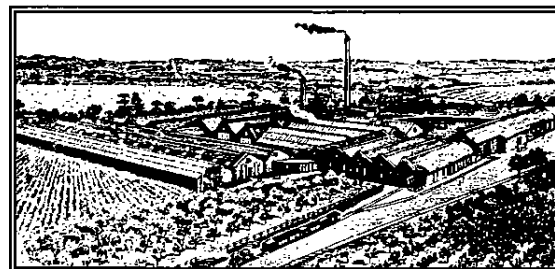
TEL (01621) 815407
FAX (01621) 814555



E-MAIL: tiptree@tiptree.com
WEB SITE: www.tiptree.com



STRAWBERRY PICKING



THE TIPTREE JAM FACTORY

THE COMPANY OWNS A FREEHOLD ESTATE OF ABOUT 1,000 ACRES AND GROWS MANY CHOICE VARIETIES OF FRUIT SELECTED FOR THEIR FINE FLAVOUR



WORLD FAMOUS MAKERS OF THE FINEST QUALITY PRESERVES AT THE TIPTREE FACTORY SINCE 1885.

Tiptree Patisserie Limited
Trewlands Farm
Tiptree
Colchester
Essex
CO5 0RF

16 May, 2018

To The Directors,

For the year ending 31 December 2017, Tiptree Patisserie Limited (Company number: 5544329) was entitled to the exemption from audit under section 479A of the Companies Act 2006.

This letter confirms Wilkin & Sons Limited, the sole member of Tiptree Patisserie Limited, is in unanimous agreement with this exemption.

Yours faithfully,

A handwritten signature in black ink, appearing to read "Georgina Offord".

Georgina Offord
Director

SATURDAY



A11 *A7797FWB* #264
02/06/2018
COMPANIES HOUSE