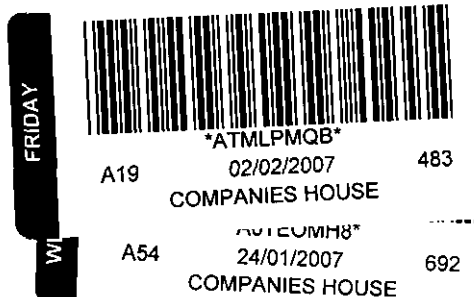


REGISTERED NUMBER: 5051166 (England & Wales)

**REPORT OF THE DIRECTORS AND
FINANCIAL STATEMENTS FOR THE
YEAR ENDED 31ST MARCH 2006
FOR
SOUTHEND ON SEA YOUNG MEN'S CHRISTIAN ASSOCIATION
(LIMITED BY GUARANTEE)**



**SOUTHEND ON SEA YOUNG MEN'S CHRISTIAN ASSOCIATION
(LIMITED BY GUARANTEE)**

**INDEX TO THE FINANCIAL STATEMENTS
FOR THE
YEAR ENDED 31ST MARCH 2006**

	Page
<i>Company Information</i>	1
Chairman's Report	2
Report of the Trustees and Directors	7
Report of the Auditors	11
Statement of Financial Activities	13
Balance Sheet	14
Notes to the Financial Statements	15

**SOUTHEND ON SEA YOUNG MEN'S CHRISTIAN ASSOCIATION
(LIMITED BY GUARANTEE)**

**COMPANY INFORMATION
FOR THE
YEAR ENDED 31ST MARCH 2006**

DIRECTORS:	A Brown G Mellish D Taylor (resigned 6 April 2005) P Coleman R Wright R Taylor (resigned 29 September 2005)
SECRETARY:	A Brown
CHIEF EXECUTIVE OFFICER:	S. Cox
REGISTERED OFFICE:	Newlands 85 Ambleside Drive Southend on Sea Essex SS1 2FY
REGISTERED COMPANY NUMBER:	5051166
REGISTERED CHARITY NUMBER:	1102837
AUDITORS:	HEW Goldwyns Limited Registered Auditor Chartered Accountants Rutland House 90/92 Baxter Avenue Southend on Sea Essex SS2 6HZ
BANKERS:	Barclays Bank Plc P O Box 1504 Southend on Sea Essex SS2 6XX

**SOUTHEND ON SEA YOUNG MEN'S CHRISTIAN ASSOCIATION
(LIMITED BY GUARANTEE)**

**CHAIRMAN'S REPORT
FOR THE
YEAR ENDED 31ST MARCH 2006**

It gives me great pleasure to introduce our Annual Report for 2005-2006.

This year has been one of change, and I would like to thank our marvellous staff team who have risen to every challenge and opportunity which has come their way with enthusiasm.

I would also like to say how wonderful it is to have partnerships with so many organisations, without these partners it would be difficult, or indeed impossible for us, to provide the range of services and opportunities we do for young people.

As the name suggests our organisation is a Christian one, committed to helping young people, particularly at times of need – regardless of gender, race, ability or faith. The YMCA stands for:

Values Statement:

- A worldwide fellowship based on the equal value of all persons.
- Respect and freedom for all, tolerance and understanding between people of different opinions.
- Active concern for the needs of the community.
- United efforts by Christians of different traditions.

YMCAs are additionally:

- Committed to meeting the identified needs of local people through close contact with and work with those people, and to create initiatives which meet local needs and our mission objectives and values.
- Committed to working with the people we are seeking to help, involving them in the design, decision making and delivery of the services we develop.

ACHIEVEMENTS

Southend YMCA is a registered charity predominantly a housing project providing 44 young people aged 16–30 accommodation. It is evident that the resident group is made up of very vulnerable and often disadvantaged young people with a multitude of needs and issues. The residents are given a vast array of opportunities to assist them in moving on into independent living.

- 2005-2006 has seen the average stay reducing from 12-24 months to 6-12 months.
- The Southend YMCA has 30 furnished flats on site and offers additional support to assist residents with independent living skills, action planning, benefits advice, form completion, job & education applications, budgeting & social skills development.
- The building benefits from on-site Night Security and access to basic skills training facilities.
- 24 hour CCTV operation & surveillance.

The Southend YMCA Housing provision also runs a Floating Support Project for Young persons that have successfully completed residency with the Southend YMCA building. The Floating Support Project currently offers semi independent accommodation with support to 14 tenants.

Southend YMCA also accommodates the Training and Education Department. This provides young people with affordable accommodation, skills training, and the opportunity to find work all under one roof; bridging the gap between leaving home and setting up alone aiming to break the “no home”, “no job” cycle’.

Southend YMCA provides education and training with a difference, aiming to provide disaffected young people with an alternative route of training. Southend YMCA Education and Training Department offer three E2E Curriculum areas; Personal and Social Development, Music and Food studies.

**SOUTHEND ON SEA YOUNG MEN'S CHRISTIAN ASSOCIATION
(LIMITED BY GUARANTEE)**

**CHAIRMAN'S REPORT
FOR THE
YEAR ENDED 31ST MARCH 2006**

The strength of these programmes is that we are able to address a range of personal development issues such as drug awareness, crime through to health issues. The courses also aim to develop the young peoples' key skills including communication, literacy through to the subtle integration of basic skill activities threaded through the various curriculums. This approach can help establish trust with the young people while breaking down preconceived ideas and concepts regarding education and build the young peoples self-esteem while ultimately developing their basic skills.

- Young people are at the heart of organisation and many of their views, ideas and projects have come to fruition – again emphasising and meeting our charitable objects ensuring our service meets the needs of the young people within our community.
- The entry 2 employment contract was increased to 45 starts from 35. This has enabled the training and education team to take on more students on structured education programmes.
- For the 2005-2006 contract year 50 leavers completed with 43 achievements providing a success rate of 86%. All 43 learners completed and achieved the main qualification and a minimum of five OCN qualifications or equivalent. All completers successfully achieved the set learning goals. The learning programmes are delivered over 12, 16 and 22 weeks. The programmes are designed to ensure that the learners all achieve at least five OCN or equivalent short qualifications; the short qualification success rate stands at 95%.
- The e2e programmes have been successful in progressing young people into positive move on opportunities 62% (further education 42%, employment (full and part time) 14%, and 6% voluntary work placements 6%). It is also evident that a further 8% (4 learners) entered the e2e programmes that were pregnant. Our e2e programmes also provides additional support to these young girls through the enrichment programme of independent living skills (cooking, cleaning and general personal hygiene skills). The Southend YMCA housing key workers assist these young women after completion of the programme – often this requires liaising with mother and baby units to assist them within their transitional period.
- 95% of learners that complete their programme achieve a minimum of five short OCN qualifications or equivalent, consequently meeting the stated learning goal identified within the ILP. In addition to the main programme aims, all learners are given the opportunity to gain further externally recognised qualifications such as Food Hygiene. All learners are encouraged to continue their learning after completion of the programme through SACC part time evening programme of activities.
- The success rate; 43 of 50 successfully completed providing a success rate of 86%. The average length of stay is 17.7 weeks.
- Introduction of new Open College Network (OCN) units within the music programme to include film production increasing our portfolio.
- All programmes now include numeracy in addition to literacy; accredited through City & Guilds.
- A number of awards have been won by Southend YMCA, these include the following;
 - The National Prince's Trust Team Leader Award was won by Southend YMCA PTT
 - Southend Prince's Trust also won the National Community Impact Award
 - Southend Prince's Trust Team won the regional award for the 'Killer in a Can' DVD
 - 3 Cue Music and 1 Prince's Trust DVD's won the television, film and photography competition screened at Bradford (second year running).
- Southend United Manager and Goal Keeping Coach ran the London Marathon for Southend YMCA raising money and our profile.
- An Educational visit programme has been implemented to enrich the curriculum and support the residents and students in gaining and sustaining both social and basic skills.
- Activities Programme gained funding through Sport Relief.

**SOUTHEND ON SEA YOUNG MEN'S CHRISTIAN ASSOCIATION
(LIMITED BY GUARANTEE)**

**CHAIRMAN'S REPORT
FOR THE
YEAR ENDED 31ST MARCH 2006**

- The Flux project managed by Focal Point Gallery was an exceptional piece of work which not only challenged the perception of young people through photography, but also gave our participants a fantastic forum to express their views through a new medium.
- 5 News and BBC's Look East have both broadcasted short pieces specifically on the work undertaken and achieved by young people at Southend YMCA
- Resources available to learners' at Southend YMCA are superb; the music studio has been acoustically treated and soundproofed. We have recently added an editing suite onto the studio; this again is acoustically treated. The music equipment both in terms of instruments and editing equipment is of a professional standard. The music programme utilises music specific software packages such as Cubase and Reason. The music studio equipment is industry standard for example; Mackie desk 32 channel, Mac G5 computer, 24 I.O sound card.

The benefits to having industry standard resources means that the learners become familiar with and gain experience of operating systems and resources which they would find within the music industry consequently providing skills and enhancing employment opportunities. In terms of building confidence the learners would not be faced with unfamiliar equipment providing consistency for the learners. In addition to this the learners are able to choose any genre or type of music as the equipment is able to cope with either analogue or digital.

- In order to cater for all the learners needs and ensure all learners are fully aware of all the options available to them a number of educational visits to Further Education Colleges are organised these include South East Essex College, Southend Adult Community College, Night Flight Studios. Southend YMCA also has a database of employers willing to work with this often-vulnerable client group. It is evident that many of our learners embark upon voluntary work on completion of the e2e programme and work towards further millennium volunteer's certificates. While the Southend YMCA recognise voluntary work to be a positive outcome, for the purposes of recording we are unable to claim this.
- Learners adopt safe practices and follow a healthy lifestyle;
Southend YMCA also encourages all learners to look after themselves; an example of this is that all learners particularly those on the More Food 4 Thought programme are encouraged to take advantage of the fresh orange juice and fruit bowl that is available to all the learners free of charge. This aspect aims to encourage the learners to consume at least five fresh fruit and vegetables per day.
- Additional activities have been implemented to assist them in terms of healthy lifestyles;
 - Sexual health awareness sessions (delivered by the Teenage Pregnancy Outreach Worker)
 - Army day
 - Fire Service (hose running)
 - Substance misuse sessions
 - Solvent abuse workshops

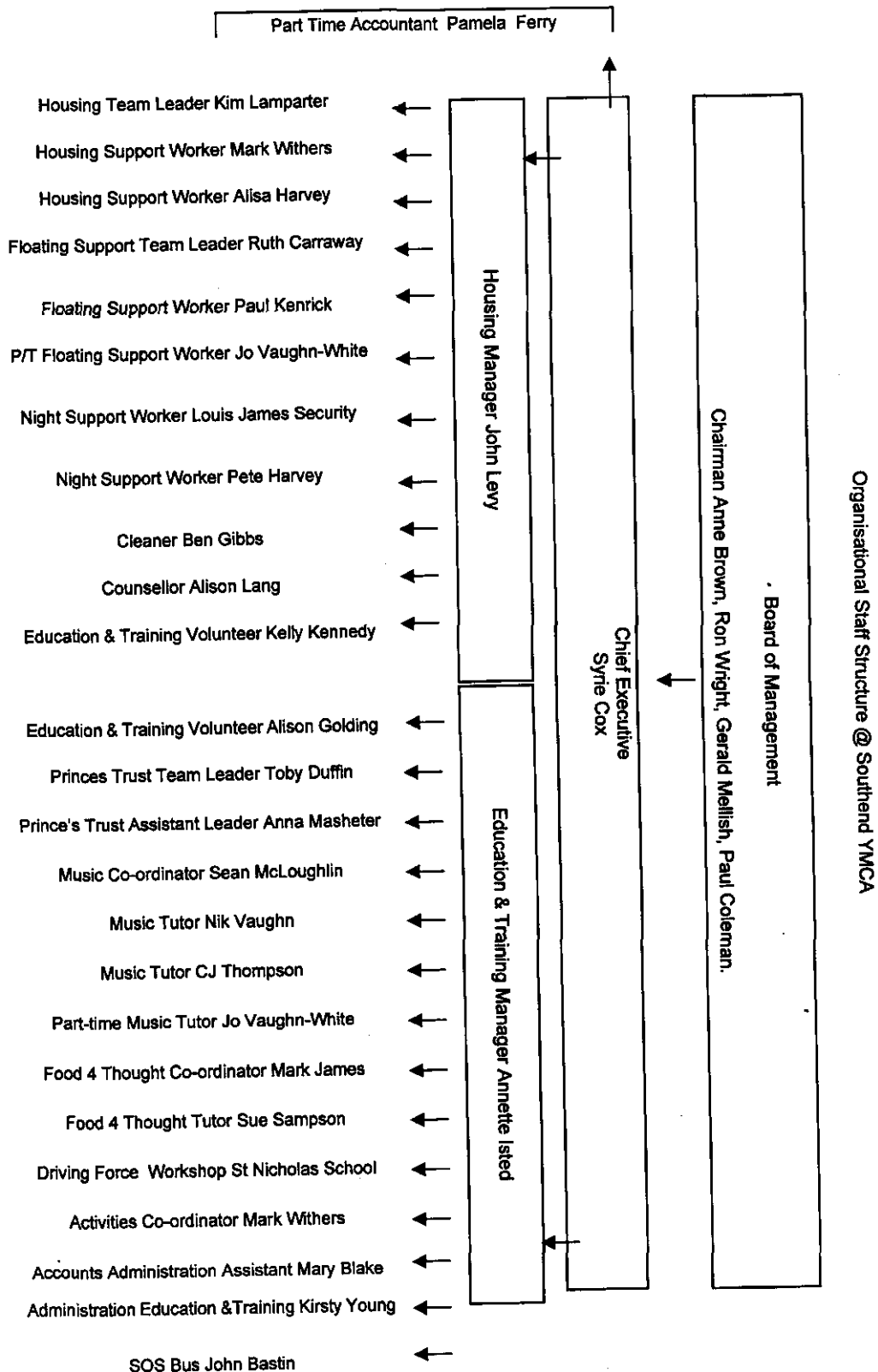
The additional activities are often used to address issues such as addictions and personal hygiene.

Southend YMCA has a suggestion box; the learners are encouraged to make suggestions regarding the enrichment activities. All activities are monitored and evaluated.

In February 2006 the YMCA was pleased to assist with making the SOS Bus an operational reality. This 'home safe and sound project' for the night time economy, offers a safe haven for the vulnerable. The project is quickly becoming established with high uptake.

**SOUTHEND ON SEA YOUNG MEN'S CHRISTIAN ASSOCIATION
(LIMITED BY GUARANTEE)**

**CHAIRMAN'S REPORT
FOR THE
YEAR ENDED 31ST MARCH 2006**



**SOUTHEND ON SEA YOUNG MEN'S CHRISTIAN ASSOCIATION
(LIMITED BY GUARANTEE)**

**CHAIRMAN'S REPORT
FOR THE
YEAR ENDED 31ST MARCH 2006**

PARTNERSHIPS

185 Drug & Alcohol	Milton Keynes College
Access to Music	Momentum Arts
Acorn Housing	Mongral
Arriva Bus Company	NACRO
Atrium	Oasis Children's Home
Badgehurst Training Centre	Open College [Network
Being Here	Princes Trust
Belchamps	Probation
Belfairs School	Project 16
Bullwood Hall Prison	Prospects College
Businessland ITC Limited	Pupil Referral Unit
Cecil Jones School	Rochford District Council
Central Hairdressing Academy	Rochford Youth & After Care
Children and Family Services	Royal Bank of Scotland
City & Guilds	SAVS
Connexions	Single Regeneration Budget Projects
Crown College	Social Services: Youth & Aftercare
Crowstone Estates	Solve It
Drug Action Team	South East Essex College
Essex County Council	Southend Adult Community College
Essex Fire Services	Southend Borough Council
Essex Youth Service	Southend Police
European Social Fund	Southend United
Focal Point Library	Southend Youth Service
Focus Youth Centre	Spirit of Adventure
Food Hygiene Matters	St. Johns Ambulance
Friends of Sutton and Shopland	St. Nicholas School
Furtherwick Park School	Stanier House
Growing Together	Supporting People
H.A.R.P.	Teenage Pregnancy Outreach
Hartington Lodge	The Job Centre
Integrated Support	The Media Shed
Kites; The Westcliff Centre	The Nova Partnership
Learning Skills Council	The Taylor Centre
Legacy Youth Centre	Theatre Resources
Leigh Film	Thorpe Bay School
Licensing Trade	VTs
Louis James Security	Y.O.T.
Metropolis	YMCA England
Millennium Volunteers	YMCA Shop

**SOUTHEND ON SEA YOUNG MEN'S CHRISTIAN ASSOCIATION
(LIMITED BY GUARANTEE)**

**TRUSTEES ANNUAL REPORT
FOR THE
YEAR ENDED 31ST MARCH 2006**

The trustees, who are also directors, present their report and the audited financial statements of the company for the year ended 31st March 2006. The trustees have adopted the provisions of the Statements of Recommended Practice (SORP) "Accounting and Reporting by Charities" issued in March 2005 in preparing the annual report and financial statements of the charity.

LEGAL STATUS

The company is a charity registered with the Charity Commission for England and Wales.

CHARITABLE OBJECTS

Southend on Sea Young Men's Christian Association is governed by its Memorandum and Articles of Association. The objects of the Association arise from its acceptance of the Basis of Union of the Young Men's Christian Association of England, Ireland and Wales, adopted by the British Young Mens Christian Association Assembly held in Birmingham in 1973, that is to say:

"To unite those who, regarding Jesus Christ as their God and Saviour according to the Holy Scriptures, desire to be his disciples in their faith and in their life, and to associate their efforts for the extension of his kingdom. Any difference of opinion on these subjects, however important in themselves, shall not interfere with the harmonious relations of the associations of the young men's Christian association on England and Ireland and Wales"

Accordingly the objects of the Association are:

- (A) To unite those who, regarding Jesus Christ as their God and Saviour according to the Holy Scriptures, desire to be his disciples in their faith and in their life, and to associate their efforts for the extension of his kingdom.
- (B) To lead young people to the Lord Jesus Christ and to fullness in him.
- (C) To provide or assist in the provision of education for persons of all ages with the object of improving conditions of life.
- (D) To relieve or assist in the relief of persons of all ages who are in conditions of need, hardship or distress by reason of their social, physical or economic circumstances.
- (E) To provide residential accommodation for persons of all ages who are in need, hardship or distress by reason of their social, physical or economic circumstances.

In pursuance of charitable objects Southend YMCA operates the following services:

Housing and Homelessness

The YMCA is the largest voluntary provider of safe supported accommodation in England for young adults. Southend YMCA offers an integrated housing pathway using modern, well equipped accommodation, let on a shorthold tenancy agreement. Housing staff devise tailor made packages of support which address the individual support requirements of each young person. This may include: assisting with benefits, completing forms and applications, budgeting, and the development of social and independent living skills.

Newlands Residential Site

Newlands provides single homeless young people the opportunity to live independently within a supported environment. Currently, there are 30 furnished flats.

Floating Support Project

Southend YMCA also has a floating support project with 12 flats. This enables young people who have been successful in their tenancy at the YMCA to progress to a 'move- on' flat making the final step towards totally independent living.

**SOUTHEND ON SEA YOUNG MEN'S CHRISTIAN ASSOCIATION
(LIMITED BY GUARANTEE)**

**TRUSTEES ANNUAL REPORT
FOR THE
YEAR ENDED 31ST MARCH 2006**

Education and Skills, Money and Work

Southend YMCA offers disaffected young people an alternative route of training. The strength of our educational programming is that we subtly integrate basic skill activity within the curriculum, and also address a range of personal and social development issues such as: drugs and alcohol awareness, crime, personal hygiene and health issues. This approach can help establish trust with the young people whilst breaking down preconceived ideas and concepts regarding education. All courses offer an introduction to information technology, and have a social inclusion focus with a move on into further mainstream education and work. In addition young people gain externally recognized nationally accredited qualifications.

Prince's Trust TEAM Programme

The PTT programme is a full time 12 week self – development course which is designed to empower young people. As young people work towards a City and Guilds qualification they acquire transferable skills such as communication, motivation, problem solving, leadership etc. A variety of activity is undertaken including a team building residential, a community project and work placements.

More Food 4 Thought

This 15 week full time course provides young people with the opportunity to obtain a basic skills and additional qualifications. It teaches basic cookery, introduces the concept of healthy eating, and offers theoretical and practical tips around shopping for a balanced diet based on a small budget. It raises self esteem, confidence and self perception, and enhances life skills and health outcomes.

Cue Music

The Cue Music course runs for 20 weeks and is designed to create well-rounded individuals with a basic knowledge of music industry and the practical skills to work within: enhancing performance skills, DJ skills and music production. The course is progressively specialist in nature introducing the fundamentals of the music industry and developing critical thinking and an analytical approach to the study of music.

Health

SOS Bus

The SOS bus project is based in a converted double - decker bus which is sited centrally in Southend on Friday and Saturday nights. This acts as a resource for the night time economy diverting people from the already hard worked public services like the ambulance, A & E and the police. Working with pubs and clubs the team (comprised of volunteers and statutory agency personnel) provides a safe haven- offering first aid, advice, and a safe place for the vulnerable.

Future Plans

Nationally there are nearly 150 YMCA's providing services in seven integrated delivery areas: Housing and Homelessness; Sport, Health, Exercise and Fitness; Crime and Safety; Education and Skills; Money and Work, Citizenship and Personal Development and Parenting and Families. In order to further its work transforming the lives of young people and meeting charitable objects Southend YMCA intends to:

- (A) Consider the feasibility of increasing its service portfolio in order to best address local unmet need. A visionary statement accompanied by a five year strategy with clear objectives will be set out.
- (B) Broaden its geographical reach, as Southend (a Unitary Borough) falls within South East Essex for funding consortium purposes.

RESERVES POLICY

The charity needs to hold a level of reserves in order to plan adequately for future development, to respond appropriately in cases of emergency, to meet its obligations should there be a temporary cessation or reduction on funding or to wind down the charity should this ever be required. The investment policy is to hold reserve funds in the most secure low risk opportunity with the highest return.

It is considered that a minimum position regarding reserves would be to hold three months operating costs and a maximum would be to hold six months operating costs.

**SOUTHEND ON SEA YOUNG MEN'S CHRISTIAN ASSOCIATION
(LIMITED BY GUARANTEE)**

**TRUSTEES ANNUAL REPORT
FOR THE
YEAR ENDED 31ST MARCH 2006**

The charity also has an ongoing building and development programme to enable it to continue to accommodate current projects. Designated funds are set aside for an internal and external cyclical maintenance programme and for the provision of furniture and equipment within flats.

In addition, the trustees consider it prudent to hold some reserves in order to meet its obligations in respect of pension provision. The Southend on Sea YMCA operates a final salary pension scheme that is currently under funded. All Young Men's Christian Associations that participate in the scheme are jointly and severally liable to meet any shortfall. Our current liability is £39,908.00.

The charity will take steps to ensure that levels of reserve are kept within these parameters.

This policy will be reviewed on an annual basis to reflect the changing requirements and obligations placed on the charity.

RISK POLICY

The board has overall responsibility for ensuring that the charity has appropriate systems of control financial and otherwise, procedures are in place to assess business risks and to implement risk management strategies. This involves identifying the types of risk the charity faces, prioritising them in terms of potential impact and likelihood of occurrence and identifying means of mitigating those risks.

The directors consider that a risk arises from the short term nature of service contracts. To mitigate this risk the trustees will develop a sustainable funding strategy to diversify income sources.

RESULTS

The results for the financial year and financial position of Southend on Sea Young Mens Christian Association are shown in the annexed financial statements. The net incoming resources for the year will be taken in reserves.

STRUCTURE, GOVERNANCE and MANAGEMENT

Southend YMCA is affiliated to YMCA England via an affiliation agreement. This relationship does not impact on the operating policies adopted by the charity. Nevertheless, there is a voluntary commitment to comply with YMCA England's In Sync Standards (a Quality Assurance Framework which sets both organisational and service benchmarks). In addition, Southend YMCA maintains close informal working relationships with YMCA's across the East of England Development Area, Essex County wide, and within the YMCA England Metropolitan area.

Directors/Trustees

Full members of the Association have the right to attend and vote at the Annual General Meeting, where honorary officers are appointed to the board of management as directors under Charitable Law. The directors/trustees during the year under review are set out on page 1.

The Association's rules provides for a board consisting of not less than eight, or more than 15 full members. The board of management recognise that their numbers have reduced to below this level and therefore invoke section 47 of the Articles of Association. This permits the board to lawfully act for the purpose of admitting persons to membership of the Association, filling up vacancies, or summoning a general election.

The board has a unified sense of purpose and wishes to acknowledge the centrality of their Christian faith in decision making and the care and leadership offered by the President. In the forthcoming financial year (2006 07) the board will:

- (A) complete the recruitment of a Chief Executive Officer, in order to carry out this task the board will enlist the HR expertise of YMCA England, and HBS Management Solutions.
- (B) Concentrate on the recruitment and appointment of new trustees drawing on best practice guidance from the Governance HUB at NCVO and YMCA England Learning Zone.
- (C) Conduct a general election.

The board meets monthly (and as a minimum at least four times in a calendar year).

**SOUTHEND ON SEA YOUNG MEN'S CHRISTIAN ASSOCIATION
(LIMITED BY GUARANTEE)**

**TRUSTEES ANNUAL REPORT
FOR THE
YEAR ENDED 31ST MARCH 2006**

STATEMENT OF DIRECTORS/TRUSTEES RESPONSIBILITIES

The board accepts ultimate responsibility for directing the affairs of Southend YMCA ensuring that it is solvent, well run and delivering the outcomes for which it was set up. This includes:

- (A) Ensuring compliance with the objects, purposes and values of the Association and with its governing document.
- (B) Setting or approving policies, plans and budgets to achieve those objectives and monitoring performance against them.
- (C) Ensuring the solvency and financial strength of the Association.
- (D) Ensuring compliance with all relevant laws, regulations and requirements of its regulators.
- (E) Setting and maintaining a framework of delegation and internal control.
- (F) Dealing with the appointment of the chief Executive.
- (G) Agreeing and ratifying all policies and decisions which might create significant risk – financial or otherwise.

Company law and Charity law require the directors to prepare financial statements for each financial year which give a true and fair view of the state of affairs of the company and its incoming resources and application of resources for the financial year. In preparing these financial statements, the directors are required to:

- (A) Select suitable accounting policies and apply them consistently.
- (B) Make judgements and estimates that are prudent.
- (C) Prepare the financial statements on the ongoing concern basis unless it is inappropriate to presume that the company will continue in its current form.

The directors are responsible for keeping proper accounting records which disclose with reasonable accuracy at any time the financial position of the company and to enable them to ensure that the financial statements comply with the Companies' Act 1985 and Charities Act 1993. They are also responsible for safeguarding the assets of the charity and hence taking reasonable steps for the prevention of fraud and other irregularities.

AUDITORS

The auditors, HEW Goldwyns Limited, will be proposed for re-appointment in accordance with Section 385 of the Companies Act 1985.

ON BEHALF OF THE BOARD:

.....
A. Brown – Secretary

Dated: 17/1/07

**SOUTHEND ON SEA YOUNG MEN'S CHRISTIAN ASSOCIATION
(LIMITED BY GUARANTEE)**

**INDEPENDENT AUDITORS REPORT TO THE MEMBERS OF
SOUTHEND ON SEA YOUNG MEN'S CHRISTIAN ASSOCIATION
(LIMITED BY GUARANTEE)**

We have audited the financial statements of Southend on Sea Young Men's Christian Association (Limited by Guarantee) for the year ended 31st March 2006 which comprise the Statement of Financial Activities, the Balance Sheet and the related notes. These financial statements have been prepared under the accounting policies set out therein and the requirements of the Financial Reporting Standard for Smaller Entities (effective January 2005).

This report is made solely to the charity's members, as a body, in accordance with Section 235 of the Companies Act 1985. Our audit work has been undertaken so that we might state to the company's members those matters we are required to state to them in an auditors' report and for no other purpose. To the fullest extent permitted by law, we do not accept or assume responsibility to anyone other than the charity and the company's members as a body, for our audit work, for this report, or for the opinions we have formed.

Respective responsibilities of the trustees and auditors

The trustees' (who are also the directors of Southend on Sea Young Men's Christian Association (Limited by Guarantee) for the purposes of company law) responsibilities for preparing the Trustees' Annual Report and the financial statements in accordance with applicable law and United Kingdom Accounting Standards (United Kingdom Generally Accepted Accounting Practice) are set out in the Statement of Trustees' Responsibilities.

Our responsibility is to audit the financial statements in accordance with relevant legal and regulatory requirements and International Standards on Auditing (UK and Ireland).

We report to you our opinion as to whether the financial statements give a true and fair view and are properly prepared in accordance with the Companies Act 1985. We also report to you whether in our opinion the information given in the Trustees' Annual Report is consistent with the financial statements.

In addition we report to you if, in our opinion, the charity has not kept proper accounting records, if we have not received all the information and explanations we require for our audit, or if information specified by law regarding trustees' remuneration and other transactions is not disclosed.

We read the Trustees' Annual Report and consider the implications for our report if we become aware of any apparent misstatements within it.

Basis of audit opinion

We conducted our audit in accordance with International Standards on Auditing (UK and Ireland) issued by the Auditing Practices Board. An audit includes examination, on a test basis, of evidence relevant to the amounts and disclosures in the financial statements. It also includes an assessment of the significant estimates and judgements made by the trustees in the preparation of the financial statements, and of whether the accounting policies are appropriate to the charity's circumstances, consistently applied and adequately disclosed.

We planned and performed our audit so as to obtain all the information and explanations which we considered necessary in order to provide us with sufficient evidence to give reasonable assurance that the financial statements are free from material misstatement, whether caused by fraud or other irregularity or error. In forming our opinion we also evaluated the overall adequacy of the presentation of information in the financial statements.

**SOUTHEND ON SEA YOUNG MEN'S CHRISTIAN ASSOCIATION
(LIMITED BY GUARANTEE)**

**INDEPENDENT AUDITORS REPORT TO THE MEMBERS OF
SOUTHEND ON SEA YOUNG MEN'S CHRISTIAN ASSOCIATION
(LIMITED BY GUARANTEE)**

Opinion

In our opinion:

- the financial statements give a true and fair view in accordance with United Kingdom Generally Accepted Practice applicable to Smaller Entities of the state of the charity's affairs as at 31st March 2006 and of its incoming resources and application of resources, including its income and expenditure for the year then ended.
- the financial statements have been properly prepared in accordance with the Companies Act 1985; and
- the information given in the Trustees' Annual Report is consistent with the financial statements.

HEW Goldwyns Limited

HEW Goldwyns Limited
Chartered Accountants
Registered Auditors
90/92 Baxter Avenue
Southend-on-Sea
Essex SS2 6HZ

Dated: *19/01/2007*

**SOUTHEND ON SEA YOUNG MEN'S CHRISTIAN ASSOCIATION
(LIMITED BY GUARANTEE)**

**STATEMENT OF FINANCIAL ACTIVITIES
(INCORPORATING AN INCOME AND EXPENDITURE ACCOUNT)
FOR THE YEAR ENDED 31ST MARCH 2006**

	Notes	Unrestricted Funds £	Restricted Funds £	2006 £	2005 £
INCOMING RESOURCES:					
Incoming resources from generated funds					
Voluntary income	2	9,113	36,335	45,448	9,481
Activities for generating funds		1,426	2,124	3,550	-
Investment income		10,040	-	10,040	6,645
Income resources from charitable activities					
Grants and training contracts	3	341,545	321,550	663,095	705,904
Other income	3	165,063	38,395	203,458	153,144
Total incoming resources		<u>527,187</u>	<u>398,404</u>	<u>925,591</u>	<u>875,174</u>
RESOURCES EXPENDED:					
Charitable activities		393,254	387,880	781,134	592,450
Governance costs		81,960	11,869	93,829	55,532
Total resources expended	4	<u>475,214</u>	<u>399,749</u>	<u>874,963</u>	<u>647,982</u>
Net incoming resources		51,973	(1,345)	50,628	227,192
Transfer between funds		<u>1,118</u>	<u>(1,118)</u>	-	-
		53,091	(2,463)	50,628	227,192
Total funds brought forward		<u>311,781</u>	<u>295,627</u>	<u>607,408</u>	<u>380,216</u>
Total funds carried forward		<u>364,872</u>	<u>293,164</u>	<u>658,036</u>	<u>607,408</u>


**SOUTHEND ON SEA YOUNG MEN'S CHRISTIAN ASSOCIATION
(LIMITED BY GUARANTEE)**

**BALANCE SHEET
31ST MARCH 2006**

		<u>2006</u>		<u>2005</u>	
	Notes	£	£	£	£
FIXED ASSETS:					
Tangible assets	6		173,862		155,153
CURRENT ASSETS:					
Debtors	7	86,440		126,602	
Cash at bank and in hand		<u>480,098</u>		<u>349,259</u>	
		566,538		475,861	
CREDITORS: Amounts falling due within one year	8	<u>82,364</u>		<u>23,606</u>	
NET CURRENT ASSETS			484,174		452,255
TOTAL ASSETS			<u>658,036</u>		<u>607,408</u>
FUNDS:					
Unrestricted funds			364,872		311,781
Restricted funds			<u>293,164</u>		<u>295,627</u>
TOTAL FUNDS	12		<u>658,036</u>		<u>607,408</u>

These financial statements have been prepared in accordance with the special provisions of Part VII of the Companies Act 1985 relating to small companies and with the Financial Reporting Standards for Smaller Entities (effective January 2005)

ON BEHALF OF THE BOARD:


.....
A Brown – Director

Approved by the Board on ...17/1/07...

**SOUTHEND ON SEA YOUNG MEN'S CHRISTIAN ASSOCIATION
(LIMITED BY GUARANTEE)**

**NOTES TO THE FINANCIAL STATEMENTS
YEAR ENDED 31ST MARCH 2006**

1. ACCOUNTING POLICIES

Accounting convention

The financial statements have been prepared under the historical cost convention and in accordance with the Companies Act 1985, the Statement of Recommended Practice (SORP), "Accounting and Reporting by Charities" issued in March 2005, applicable accounting standards and the Charities Act 1993.

Tangible fixed assets

Depreciation is provided at the following annual rates in order to write off each asset over its estimated useful life.

Fixtures and fittings	20% on reducing balance
Music, Sports and office equipment	25% on reducing balance
Computer equipment	33.3% on cost
Motor vehicles	25% reducing balance
Kitchen and music room extensions	50 years straight line

Management income from housing

The Southend property is owned by the National Council of YMCAs. Rent income is therefore collected on behalf of the National Council.

Southend on Sea Young Men's Christian Association manages the property and receives a management income, which it recovers from the rent income.

Grant and training income

Grant income is accounted for on a receivable basis.

Donations and investment income

Donations and investment income are accounted for on a received basis.

Resources expended

Resource expended are recognised in the period in which they are incurred. Resources expended include attributable VAT if it cannot be recovered.

Resources expended are allocated to the particular activity where the cost relates directly to that activity. Where a cost is not directly attributable to a particular activity it has been apportioned over the relevant activities on an appropriate basis as detailed in note 3.

Charitable expenditure comprises those costs incurred by the charity in the delivery to its activities and services. It includes both costs that can be allocated directly to such activities and those costs of an indirect nature necessary to support them.

Governance costs include those costs associated with meeting the constitutional and statutory requirements of the charity and include audit fees and costs linked to the strategic management of the charity.

Funds

Unrestricted funds are incoming resources receivable or generated for the objects of the charity without specified purpose and are available as general funds.

Designated funds are unrestricted funds earmarked by the Board for particular purposes.

Restricted funds are incoming resources receivable or generated for the objects of the charity for a specific purpose.

Pensions

The charity participates in a multi-employer pension plan for employees of both YMCA England and member YMCAs. The plan's actuary has advised that it is not possible to separately identify the assets and liabilities relating to the charity for the purposes of FRS 17 disclosure.

The cost of the defined benefit pension plan is charged to the Statement of Financial Activities so as to spread the cost of pensions over the service lives of employees. Pension cost is assessed in accordance with the advice of qualified actuaries. Actuarial surpluses and deficits are spread over a period of 13 years.

Operating leases

Rentals payable under operating leases are charged to the Statement of Financial Activities as incurred.

**SOUTHEND ON SEA YOUNG MEN'S CHRISTIAN ASSOCIATION
(LIMITED BY GUARANTEE)**

**NOTES TO THE FINANCIAL STATEMENTS
YEAR ENDED 31ST MARCH 2006**

2. Voluntary income

	<u>Unrestricted Funds</u>	<u>Restricted Funds</u>	2006	2005
	£	£	£	£
Individuals and businesses	1,315	36,335	37,650	129
Charitable foundations	<u>7,798</u>	<u>-</u>	<u>7,798</u>	<u>9,352</u>
	<u>9,113</u>	<u>36,335</u>	<u>45,448</u>	<u>9,481</u>

3. Incoming resources from charitable activities

	<u>Unrestricted Funds</u>	<u>Restricted Funds</u>	2006	2005
	£	£	£	£
Grants and training contracts:				
Southend Borough Council:				
Housing fees	315,713	-	315,713	236,822
Gateway Project	-	-	-	61,818
Supporting People	-	-	-	26,868
More Food 4 Thought	-	25,900	25,900	-
Training	2,500	-	2,500	-
South East Essex College and schools:				
E2E	-	68,278	68,278	180,490
Nova Lids	-	-	-	12,910
Nova	-	113,574	113,574	9,990
Prince's Trust	-	20,709	20,709	-
Connexions:				
Community Sector Grant	-	-	-	24,298
European Social Fund:				
Cue Music	-	10,000	10,000	21,645
More Food 4 Thought	-	36,695	36,695	63,775
Essex County Council:				
Supporting People	23,332	-	23,332	-
Rochford District Council:				
Training	-	-	-	2,250
Castle Point Council:				
Housing Grant	-	-	-	4,500
Milton Keynes College and New Deal:				
Prince's Trust	<u>-</u>	<u>46,394</u>	<u>46,394</u>	<u>60,538</u>
Total grants and training Contracts	341,545	321,550	663,095	705,904
Other incoming resources:				
Housing	145,623	-	145,623	133,640
Training	-	16,950	16,950	7,165
SOS Bus	-	18,455	18,455	12,329
Residents' Fund	-	-	-	10
Hire of facilities	19,130	-	19,130	-
Sundry	<u>310</u>	<u>2,990</u>	<u>3,300</u>	<u>-</u>
	<u>506,608</u>	<u>359,945</u>	<u>866,553</u>	<u>859,048</u>

**SOUTHEND ON SEA YOUNG MEN'S CHRISTIAN ASSOCIATION
(LIMITED BY GUARANTEE)**

**NOTES TO THE FINANCIAL STATEMENTS
YEAR ENDED 31ST MARCH 2006**

4. Total resources expended

	Basis of Allocation	Housing	Training	SOS Bus	Other	Governance	2006 Total	2005 Total
	£	£	£	£	£	£	£	£
Costs directly allocated to activities								
Staff costs	Direct	196,750	212,945	6,988	-	-	416,683	351,643
Agency staff	Direct	6,888	-	-	-	-	6,888	1,362
Premises	Direct	117,974	2,708	-	-	-	120,682	74,319
Travel	Direct	3,106	3,007	-	-	-	6,113	2,902
Motor expenses	Direct	-	4,120	3,583	-	-	7,703	4,637
Consumable items & equipment	Direct	141	27,139	27,496	-	-	54,776	24,577
Courses, accommodation & visits	Direct	-	24,206	-	-	-	24,206	14,013
Student payments	Direct	-	32,171	-	-	-	32,171	35,315
Bad debts	Direct	8,853	-	-	-	-	8,853	11,456
Support costs allocated to activities								
General staff	Staff time	-	-	-	-	64,038	64,038	48,187
Communication	Usage	3,132	2,000	423	-	233	5,788	3,289
Premises	Usage	-	2,200	-	-	-	2,200	2,400
Office expenses	Usage	16,964	25,837	3,602	2,809	3,667	52,879	25,684
Staff training	Usage	4,870	9,539	-	-	-	14,409	17,881
Insurance	Usage	2,595	1,000	-	-	-	3,595	4,987
Bank charges	Direct	-	-	-	-	1,184	1,184	1,156
Advertising	Usage	722	1,225	-	752	3,510	6,209	5,278
Subscriptions	Usage	1,157	10	-	-	-	1,167	1,473
Auditors fees	Direct	-	4,700	-	-	7,043	11,743	5,875
Professional & consultancy fees	Usage	5,792	1,865	-	-	1,406	9,063	647
Bookkeeping	Direct	-	-	-	-	12,399	12,399	9,329
Travel & subsistence	Direct	-	-	294	-	-	294	-
Donations	Direct	-	-	-	3,000	-	3,000	-
Sundry	Usage	<u>5,092</u>	<u>3,134</u>	<u>345</u>	<u>-</u>	<u>349</u>	<u>8,920</u>	<u>1,572</u>
		<u>374,036</u>	<u>357,806</u>	<u>42,731</u>	<u>6,561</u>	<u>93,829</u>	<u>874,963</u>	<u>647,982</u>

Included in resources expended are the following costs:

	2006 £	2005 £
Auditors fees:		
Audit fee	7,043	5,875
Other fees	4,700	-
Operating leases – land and buildings	48,149	23,617
Depreciation in owned assets	<u>46,211</u>	<u>34,311</u>

**SOUTHEND ON SEA YOUNG MEN'S CHRISTIAN ASSOCIATION
(LIMITED BY GUARANTEE)**

**NOTES TO THE FINANCIAL STATEMENTS
YEAR ENDED 31ST MARCH 2006**

5. STAFF COSTS AND NUMBERS

	2006	2005
	£	£
Wages and salaries	423,047	347,355
Social security costs	34,076	28,638
Pension costs	23,598	23,837
	<u>480,721</u>	<u>399,830</u>

No employees received emoluments of more than £60,000.

The average weekly number of employees during the year, calculated on the basis of full time equivalents was as follows:

	2006	2005
	£	£
Housing and support	9	7
Training	8	9
SOS Bus	1	-
Management and administration	2	2
	<u>20</u>	<u>18</u>

No expenses were paid to trustees during the period.

**SOUTHEND ON SEA YOUNG MEN'S CHRISTIAN ASSOCIATION
(LIMITED BY GUARANTEE)**

**NOTES TO THE FINANCIAL STATEMENTS
YEAR ENDED 31ST MARCH 2006**

6. TANGIBLE FIXED ASSETS

	<u>Fixtures And Fittings</u>	<u>Music Sports & Office Equipment</u>	<u>Computer Equipment</u>	<u>Motor Vehicles</u>	<u>Kitchen & Music Room Extensions</u>	<u>Totals</u>
	£	£	£	£	£	£
COST:						
At 31st March 2005	57,835	91,422	45,615	10,209	52,390	257,471
Additions	<u>5,837</u>	<u>30,603</u>	<u>3,185</u>	<u>5,435</u>	<u>19,860</u>	<u>64,920</u>
At 31st March 2006	<u>63,672</u>	<u>122,025</u>	<u>48,800</u>	<u>15,644</u>	<u>72,250</u>	<u>322,391</u>
DEPRECIATION:						
At 31st March 2005	34,421	41,805	21,018	4,026	1,048	102,318
Charge for the year	<u>6,285</u>	<u>21,415</u>	<u>15,412</u>	<u>1,655</u>	<u>1,444</u>	<u>46,211</u>
At 31st March 2006	<u>40,706</u>	<u>63,220</u>	<u>36,430</u>	<u>5,681</u>	<u>2,492</u>	<u>148,529</u>
NET BOOK VALUE:						
At 31st March 2006	<u>22,966</u>	<u>58,805</u>	<u>12,370</u>	<u>9,963</u>	<u>69,758</u>	<u>173,862</u>
At 31st March 2005	<u>23,414</u>	<u>49,617</u>	<u>24,597</u>	<u>6,183</u>	<u>51,342</u>	<u>155,153</u>

7. DEBTORS: AMOUNTS FALLING DUE WITHIN ONE YEAR

	2006 £	2005 £
Housing debtors	12,444	14,173
Other debtors	46,445	105,776
Prepayments	<u>27,551</u>	<u>6,653</u>
	<u>86,440</u>	<u>126,602</u>

8. CREDITORS: AMOUNTS FALLING DUE WITHIN ONE YEAR

	2006 £	2005 £
Trade creditors	21,680	7,606
Taxation and social security	11,054	-
Other creditors	-	250
Accrued and deferred income	<u>49,630</u>	<u>15,750</u>
	<u>82,364</u>	<u>23,606</u>

9. OPERATING LEASES

The following payments are committed to be paid within one year:

	Land and Buildings 2006 £	Land and Buildings 2005 £
Expiring: Within one year	<u>43,195</u>	<u>44,707</u>

**SOUTHEND ON SEA YOUNG MEN'S CHRISTIAN ASSOCIATION
(LIMITED BY GUARANTEE)**

**NOTES TO THE FINANCIAL STATEMENTS
YEAR ENDED 31ST MARCH 2006**

10. PENSIONS

The charity participates in a contributory pension plan providing defined benefits based on final pensionable pay for both employees of YMCA England and member YMCA. The assets of the YMCA Pension Plan are held separately from those of the charity and at the year-end these were invested in pooled funds operated by Northern Trust, Legal and General and Schroder. Northern Trust manage the Plan's equities and bonds; Legal and General and Schroder manage property units only. The contributions are determined by a qualified actuary on the basis of triennial valuations using the projected unit method. The pension charge for the year is shown in note 5.

The most recent completed three year valuation was as at 1st May 2005. The assumptions used which have the most significant effect on the results of the valuation are those relating to the pre-retirement investment yield of 7.0% per annum, the post-retirement investment yield of 5% and the rate of earnings increase of 5.25% per annum. The result of the valuation showed that the actuarial value of the assets was £34.3 million. This represented 57% of the benefits that had accrued to members, after allowing for expected future increases in earnings. However, under Section 56 of the Pensions Act 1995, the Minimum Funding Requirement (the MFR) funding level was 89%. During the year ended 31st March 2006, contributions for employees were 8% of salary and the employer contributions were 14.4%.

As from 1st July 2006 the employer's contribution rate will increase to 26% with the employee rate remaining at 8%.

The plan's actuary has advised that it is not possible to separately identify the assets and liabilities relating to the charity for the purposes of FRS17 disclosure.

After taking professional advice and having consideration to the various options open to them, YMCA England in its capacity as Principal Employer in the YMCA Pension Plan and in conjunction with the Trustee of the YMCA Pension Plan, made the recommendation that the YMCA Pension Plan should close to new members and future benefit accruals. After consultation with members and participating YMCA employers, the Trustee of the YMCA Pension Plan informed the charity on 8th May 2006 that they would adopt the recommendation and that the YMCA Pension Plan will close with effect from 30th April 2007.

The last valuation, prepared as at 1st May 2005, showed that the YMCA Pension Plan had a deficit of £26.5 million. Negotiations are continuing as to how this is to be allocated between participating YMCA employers. In addition, the charity may have over time liabilities in the event of the non-payment by other participating YMCAs of their share of the YMCA Pension Plan's current deficit. It is not possible currently to quantify the potential amount that the charity may need to pay in the future.

11. ANALYSIS OF NET ASSETS BETWEEN FUNDS

	Tangible Fixed Assets £	Net Current Assets £	Total £
Restricted Funds	54,569	238,595	293,164
Unrestricted Funds	119,293	245,579	364,872
	<u>173,862</u>	<u>484,174</u>	<u>658,036</u>

**SOUTHEND ON SEA YOUNG MEN'S CHRISTIAN ASSOCIATION
(LIMITED BY GUARANTEE)**

**NOTES TO THE FINANCIAL STATEMENTS
YEAR ENDED 31ST MARCH 2006**

12. FUNDS

- (a) General funds – this fund represents the undesignated accumulated surplus from funds available for general objectives of the charity.

- (b) Designated funds – these funds represent funds designated by the Board for:

Furniture and Equipment – the replacement of furniture and equipment in the Association's Ambleside Drive premises.

Repairs to Property – the repair, both internal and external, of the Association's Ambleside Drive premises.

Move on Flats – Furniture and Equipment – the replacement of furniture and equipment in the Association's rented flats.

- (c) Restricted funds – these funds represent the accumulated surpluses from funds available for a specific purpose:

Housing Security Fund – funded by the Essex Probation Service for the provision and maintenance of CCTV equipment.

Gateway Project – single regeneration funding, administered by Southend-on-Sea Borough Council, for education based training and activities to be used for items related to the project.

Music Project – funded by South East Essex College, for the provision of music tuition.

Prince's Trust – funded by South East Essex College and Milton Keynes for the Prince's Trust Volunteer Scheme.

Residents' Fund – contributed to by various sources for the provision of immediate temporary relief to young people in crisis situations.

Jones Memorial Trust – funding towards the building costs of the Association's premises in Ambleside Drive.

Sports and Health Equipment – funding to purchase and run first aid courses for young people.

Community Sector grant – funded by Connexions for the provision of outreach music.

E2E – (Entry to Employment) funded by the Learning Skills Council for the provision of training to those not currently in employment, education or training.

European Social Fund – Cue Music – funded by the European Union for the provision of training to those not currently in employment or training.

European Social Fund – More Food for Thought – funded by the European Union for the provision of training to those not currently in employment, education or training.

Supporting People 1 – funded by Southend Borough Council for the provision of a new ICT infrastructure.

Supporting People 2 – funded by Southend Borough Council for the provision of a drugs worker to work with young people.

Supporting People 3 – funded by Southend Borough Council to assist with staff training.

SOS Bus – contributed to by various sources for the provision of an emergency late night facility for vulnerable people.

**SOUTHEND ON SEA YOUNG MEN'S CHRISTIAN ASSOCIATION
(LIMITED BY GUARANTEE)**

**NOTES TO THE FINANCIAL STATEMENTS
YEAR ENDED 31ST MARCH 2006**

12. FUNDS (continued)

	At 1st April 2005	Incoming Resources	Outgoing Resources	Transfers	At 31st March 2006
	£	£	£	£	£
Movement of funds					
Restricted Funds:					
Housing security fund	1,836	-	297	(250)	1,289
Gateway project	11,665	-	3,333	-	8,332
Gateway restricted	2,528	5,114	-	-	7,642
Music Project	29,623	-	199	-	29,424
Prince's Trust	31,978	68,808	68,010	-	32,776
Residents fund	391	-	146	-	245
Jones Memorial Trust	2,600	-	-	-	2,600
Sports and health equipment	565	-	142	-	423
Community Sector grant	28,561	-	6,587	(5,802)	16,172
European Social Fund – Cue Music	-	10,000	7,132	(2,868)	-
E2E	105,214	199,002	216,315	(14,664)	73,237
European Social Fund – More Food for Thought	35,348	62,595	51,348	23,334	69,929
SOS Bus	21,783	52,885	42,907	-	31,761
Supporting People ICT infrastructure	6,667	-	3,333	-	3,334
Supporting People Drugs Worker	16,000	-	-	-	16,000
Supporting People Staff Training	868	-	-	(868)	-
Total Restricted Funds	<u>295,627</u>	<u>398,404</u>	<u>399,749</u>	<u>(1,118)</u>	<u>293,164</u>
Unrestricted Funds:					
Designated Funds:					
Furniture and Equipment	13,479	-	7,855	8,000	13,624
Repairs to Property - Internal	5,500	-	-	2,500	8,000
- External	16,782	-	4,432	3,450	15,800
Move on Flats - Furniture and Equipment	4,561	-	2,574	2,013	4,000
General Funds	271,459	527,187	460,353	(14,845)	323,448
Total Unrestricted Funds	<u>311,781</u>	<u>527,187</u>	<u>475,214</u>	<u>1,118</u>	<u>364,872</u>
Total Funds	<u>607,408</u>	<u>925,591</u>	<u>874,963</u>	<u>-</u>	<u>658,036</u>

**SOUTHEND ON SEA YOUNG MEN'S CHRISTIAN ASSOCIATION
(LIMITED BY GUARANTEE)**

**NOTES TO THE FINANCIAL STATEMENTS
YEAR ENDED 31ST MARCH 2006**

13. RELATED PARTY TRANSACTIONS

The charity paid rent during the year totalling £3,825 in respect of a flat in Riviera Drive, Southend on Sea, to R. Brown, who is the husband of Mrs. A. Brown a trustee of the charity. The flat was used as a Move on Flat.

14. CONTROLLING PARTY

There is no ultimate controlling party.