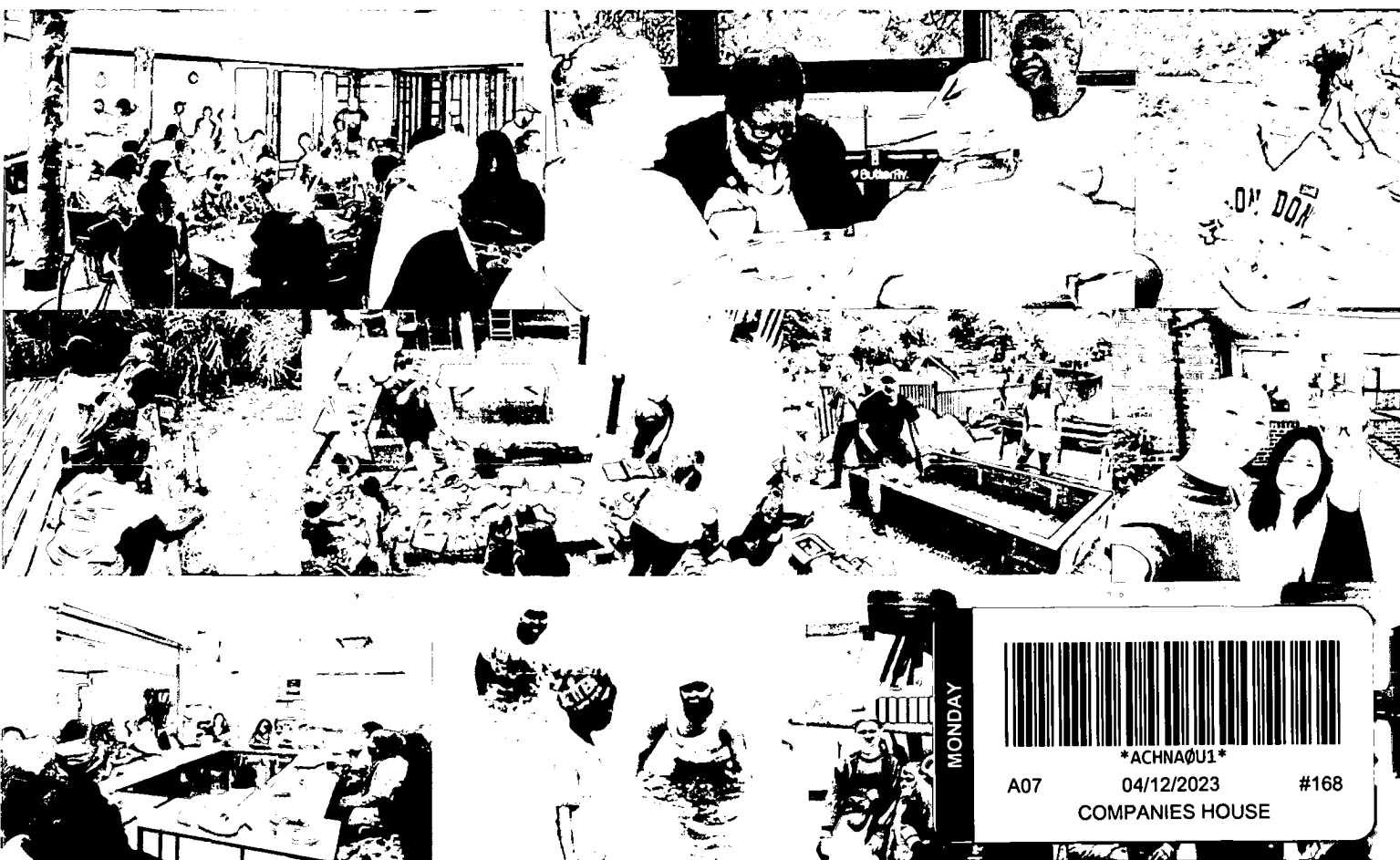


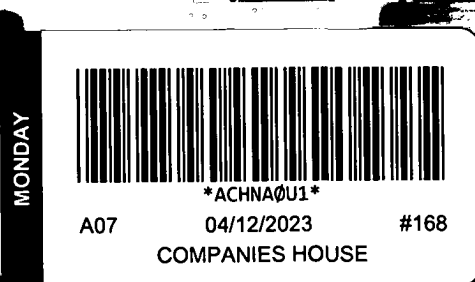


SOUTH HAMPSTEAD AND KILBURN COMMUNITY PARTNERSHIP

Annual Report and Financial Statements
for the year ended 31 March 2023



Company limited by guarantee no. 04975299
Registered charity in England and Wales no. 1128207



Contents

Legal and Administrative Information	3
Our Vision	4
The Difference We Make	5
Projects	
Living and Learning Together	6
Community Champions	9
ARC Youth Club	11
Learning, Employment and Advice	13
Our Plans	15
Governance	16
Financial Review	18
Independent Examiner's Report	19
Financial Statements	
Statement of Financial Activities	20
Balance Sheet	21
Notes to the Financial Statements	22

Legal and Administrative Information

Registered Office

109 Rowley Way
Abbey Road
London NW8 0SW

Website www.shakonline.co.uk

Registered charity in England and Wales

Number 1128207

Company limited by guarantee

Number 04975299

Board of Trustees (Company Directors)

Dr Russell Baily Gilbert (deceased 25 June 2023)

Jade Fox (Treasurer)

Sajjad Hussain Daultana

Elena Besussi (Chair)

Jackie Burdon

Michael Stuart

Ruth Adkin (co-opted 18 May 2023)

Chloe Hellier (co-opted 18 May 2023)

Key Staff

John Boyle (CEO and Secretary)

Mohammed Jaseem (Finance Manager)

Independent Examiners

Goldwins Chartered Accountants
75 Maygrove Road
London NW6 2EG

Bankers

Unity Trust

Our vision is of a place where everyone can live, learn and grow together

This is the 20th year of the South Hampstead and Kilburn Community Partnership's (SHAK) operation, running the SHELL Community Centre and ARC Youth Club on the Alexandra and Ainsworth estate, an area of iconic brutalist architecture and multiple social and economic challenges.

SHAK is a resident led charity based on the Alexandra and Ainsworth estate in the Kilburn Ward of Camden, London, dedicated to supporting residents and young people living in an area of high deprivation.

Our Mission is to work with local young people and adults to improve well-being, inclusion and life chances by nurturing talents, passions, skills and confidence.

Our **strategic aims** are:

- * **A more connected community:** a place where everyone feels included and where people get to know each other.
- * **A more empowered community:** a place where adults and young people take the lead in creating the opportunities they want to see.
- * **A community where people have better well-being:** a place where everyone feels safe and that works to tackle inequalities in health.
- * **To increase access to learning, employment and leisure:** A place where those most disadvantaged have more access to learning, suitable employment and leisure opportunities.

The Difference We Make

The area we work in is densely populated and among the top 10% most deprived areas in England based on income deprivation affecting older people and children. The neighbourhoods we serve are also among top 10% for those suffering unemployment and health deprivation.

The latest data for Kilburn ward shows that the life expectancy at birth for a male in Kilburn is 77.5 years compared to the Camden average of 82.1 and ranks lowest amongst Camden wards. For a female, average life expectancy is 82.7 years compared to the Camden average of 86.5 and ranks 2nd lowest.

This year we:

- * engaged with 1,157 individual users
- * had 4,060 attendances
- * delivered 520 sessions



Living and Learning Together Project

The **project aims** are:

- Residents at risk of social exclusion, especially those from minority communities, become more connected to others in their community.
- Residents increase their sense of health and wellbeing.
- Residents increase confidence, skills and capacity to co-produce new activities.
- Younger and older residents have increased contact with each other, leading to better two-way understanding.

On and around the Alexandra & Ainsworth estate we have supported residents to establish **weekly coffee morning** which a small group of volunteers run, along with participants. There were 41 coffees mornings attended by 82 residents of different ethnicities and ages ranging from 3 months to 95 years. Activities include a space to discuss different topics with guest speakers such as a visit from Prostate Cancer UK. New activities introduced this year were bingo, film club along with board games and other games such as table tennis.



Young
gardener

We continued to support the **Gardening Club** established in the previous year with residents and the estate head gardener. Support from Camden Council enabled space to be provided outside the Tenant's Hall for the group to grow flowers and vegetables, improving the physical environment and at the same time positively impacting group members' mental health and wellbeing. The garden club continues to run monthly, the number of residents attending regularly increasing to 14. Activities continue to include plant swapping, planting bulbs and sharing seeds that can be taken away and planted on balconies



Pond dipping on
Sayers Croft trip

In response to local parents' calls for more **activities for under nine-year-olds** we increased the number of activities. 30 children attended the two arts and craft activities during school holidays, while 26 children attended outdoor activities at Sayers Croft in Paddington Rec over the Easter and summer holidays. This popular outdoor activity was done in collaboration with ARC, our youth club, and the wonderful staff at Sayers Croft at Paddington Rec. The children took part in a variety of activities including pond dipping, making their own wooden jewelry from scratch and making popcorn over an open fire. Several young people rebooked for the second day as they had enjoyed the sessions so much on the first day. One child commented "Today was the best day I've experienced ever."

With support from the Alexandra and Ainsworth Tenants & Residents Association (TRA) and a small grant from the Camden Cost-of-Living fund we were able to bring back **SHAK Chef** a project which supports local parents to

come together and cook with their children. Tips and skills are shared around how to cook healthy meals on a budget while coming together and sharing cultures through food. Food for the session is supplied with extra ingredients so recipes can be repeated at home helping with stretched family budgets. Over the year 25 children and parents took part. The cooking sessions featured in the 2023 Spring issue of the Camden Magazine.

We also supported residents on and around the Alexandra and Ainsworth estate to organise **celebrations and trips**, the highlights being an Eid celebration in July 2022 attended by 156 adults and young people. The day featured a question-and-answer session where non-Muslim attendees learned about the festival. Another great success was a trip to the seaside attended by 40 residents of all ages. While the youngsters took a dip in the sea an older resident said, "The best part was sitting on the seafront enjoying the sun and the sea."



Eid celebration at the Alexandra & Ainsworth tenants hall

Living and Learning Together Project

Impact & Evaluation

From April 2022 to March 2023, 656 unique users attended the 70 sessions of activities and events offered. We conducted surveys asking participants questions around making friends, new connections (including intergenerational links), learning, health and wellbeing and confidence. Responses were received from approximately 10% of the cohort from which we summarised the below results.

- * 88% strongly agreed (54%) or agreed (34%) that they had made new friends from different backgrounds.
- * 88% strongly agreed (51%) or agreed (37%) that they felt more connected to others and everyday life.
- * 82% strongly agreed (54%) or agreed (28%) that they felt more connected to people from a younger/older generation.
- * 80% strongly agreed (52%) or agreed (28%) that they had learnt something new.
- 75% strongly agreed (51%) or agreed (24%) that they felt more confident.
- 72% strongly agreed (42%) or agreed (30%) that they were more active and healthier.

Community Champions Project



Summer family arts activities on Kilburn estates

Further afield we continued to deliver the Community Champions project which seeks to build on the strengths, skills and knowledge of local communities, by recruiting local people as volunteers to tackle inequalities, improve health and wellbeing and address local issues of concern. On the target estates in Kilburn of Webheath, West End Sidings, Kilburn Vale and Kingsgate Estates we have continued to develop and support several initiatives including:

Well-being walking group

We started by training a group of residents in walk leader training and then helped them to set up a regular walk which started at a Kilburn café with a hot drink and took different routes through the neighbourhood. The walk brings people together while providing healthy exercise with added refreshments, helping with the cost-of-living squeeze.

Adult Art Classes - Warm spaces

We supported a local (Webheath-based) artist, who approached us

on receiving a leaflet through his door for the “Warm Hub” based at “Netherwood Youth and Family Hub”. He went to join us on a weekly basis to support residents with art activities.

This was started in partnership with Camden as part the “Warm Welcome” campaign in the winter of 2022, continuing into the warmer seasons.

Kilburn Grange Community Garden

A “Community Champion” first approached us in March 2021 with the idea of developing a community garden within Kilburn Grange Park. A little over a year later, after much research, planning, community engagement and liaising with Camden, permission was granted to go ahead. Throughout the process, we offered support by assisting with in-person surveys in the park, completing risk assessment forms, and contributing to early expenses to ensure that the volunteers involved were not out of pocket.

We also supported the garden volunteer group in completing an application to Camden Giving for a We Make Camden Kit grant, and the project was awarded £2000, helping it to become financially self-sustaining. The garden now has a strong volunteer base and has become self-sustaining in most respects though the Community Champion project still offers support when needed.

As well as these regular activities, the Community Champions have hosted several one-off events, celebrations and trips to engage and bring communities together such as the Webheath Community Garden Grand Opening with Webheath TRA, Spring Storytelling with "Friends of Grange Park", the Kilburn Vale "Planting party" & the installation of raised planting beds at "Grange Park community garden". We also facilitated several estates-based event days during school holidays with children's arts activities, cycle repairs, birds and bugs activities, song, drama & dance. We also supported celebrations such as Christmas and Jubilee parties.

The project is currently in its final fourth year and being evaluated by an external organisation appointed by the Council. Results will be available in the New Year and included in our next report.



Khoa Pham Building planters at Kilburn Grange Park community garden

ARC Youth Club

A purpose-built youth space in the middle of the Alexandra and Ainsworth, Rowley Way estate, which includes a fully equipped music studio and recording room, kitchen, games, computers, WIFI and space for activities.

Highlights in 2022–23 included:

- * Holiday Activities & Food programme provided a range of activities and 560 healthy meals to local young people across Easter, Summer and Christmas holidays.
- * Young people joined the local Tenants Residents Association to stage community celebration for the Platinum Jubilee.
- * Young people forums discussed social issues such as gang culture and homelessness, and organised a trip to Southend on Sea.

Reach:

- * ARC engaged 196 young people aged between 9 and 19, with 1238 attendances over 119 sessions.
- * At least 80% are local, from an area which is rated among the 10–20% most deprived in England for income deprivation affecting children (Indices of Multiple Deprivation).
- * 75% of young people we work with come from Black and Minority Ethnic (BAME) background.



ARC Youth Club

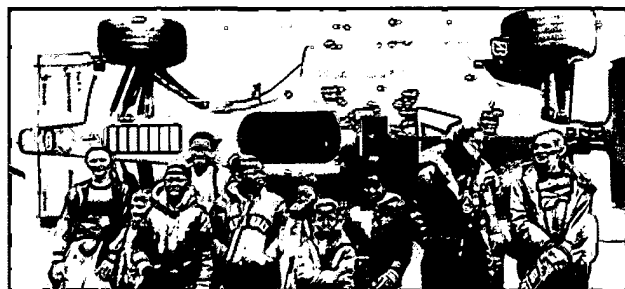
Impact and Evaluation

Evaluation is conducted through a mix of surveys, case studies and professional observations by the youth work team. Surveys were conducted during holiday provision with approximately 25% of attendees. Individual outcomes for young people are logged on an ongoing basis.

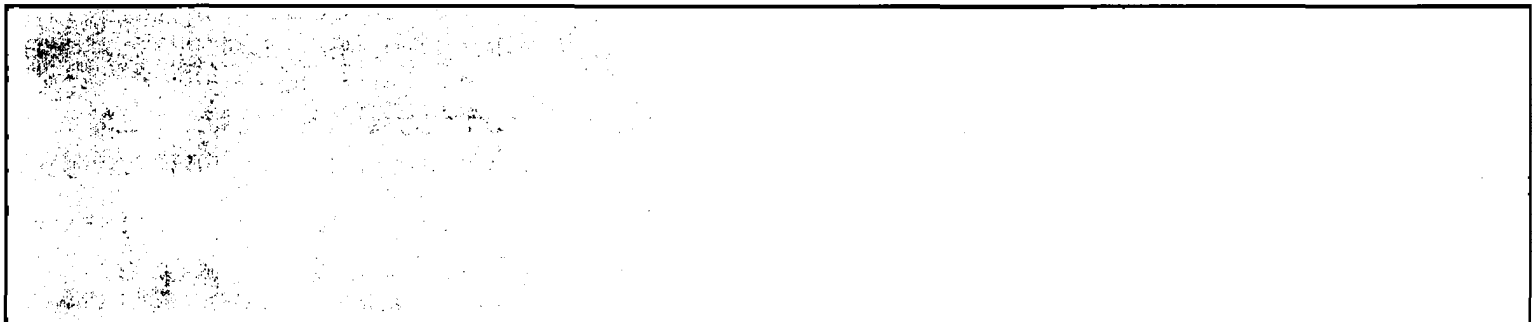
- * 42 young people recorded development outcomes including improved confidence, communications skills, artistic skills, sports, music and cooking.
- * 100% of those attending regularly learned new or developed existing skills including artistic competence, music, cooking and sports.
- * 91% of young people attending regularly achieved personal development outcomes. These include increased self-confidence & self-esteem, increased motivation, improved behaviour, better team building skills, developing mentoring skills, problem solving and accessing work placements.
- * 60% of young people regularly attending contributed to make a difference in the community, for example helping with the Jubilee event in summer 2022, attending youth forum meetings, helping an event or organising events for their peers such as trips and activities and discussed issues such as gang violence or homelessness.



Young people taking a dip on a trip to Southend on Sea



ARC young people go-karting "This has been one of the best experiences of my life!"



Learning, Employment and Advice

Evaluation on our adult and community learning contract is carried out by an external organisation appointed by Camden Council. Interviews were conducted with 22 learners and results are summarised below.

- * 100% achievement of individualised learning goals.
- * 95% of learners reported an increase in confidence, feeling happier and calmer.
- * 95% of those working towards employment reported that they felt "prepared to take my next step" e.g. working, training or volunteering.

The South Hampstead Education and Life-Long Learning (SHELL) Centre spreads across two former laundry rooms on the edge of the estate, and offers courses including computer literacy, employment preparation, English, numeracy, community research, money management, craft skills healthy cooking and other vocational courses, plus social gatherings.

Community learning

We delivered 443 hours of flexible learning engaging 178 learners in the academic year 2022-23 focused on areas of employability, digital inclusion and health & wellbeing, including healthy cooking on a budget sessions and a women's health session.



Celia and Ray successfully found employment and a new home after attending employment and ESOL classes.



Women's health and wellbeing group.

Advice Project

We launched a new advice service, based at the SHELL Centre, with support from Trust for London. This was in response to growing requests for support which we were seeing within our other sessions and results from our 2021 community consultation which highlighted the need for more advice and support. In year one we achieved our aim of recruiting a small group of volunteers who, after basic signposting and advice training, were able to extend the reach of this service into the community through their own networks, experience and by holding outreach sessions in other venues such as local libraries. The service delivered one to one advice to 51 residents on a range of issues such as benefits, grants, housing and debt. By working with Camden Advice Network (a forum of twelve Camden specialist advice organisations) we were able to refer on more complex cases.

Impact & Evaluation of Advice Service

Evaluation on this project is conducted in line with a framework designed and agreed with Trust for London. Beneficiaries are asked to rate “awareness of local advice and support services” and “confidence in using online tools and resources” on a scale of 1 to 5 (where 5 is the highest rating) both before and after engaging with the service. We also measure impact by recording benefits or grants awarded and overall satisfaction with the service by rating on a scale of 0 to 10 (where 10 is most satisfied). 14 out of 51 users responded with results summarised below.

- * Participants’ knowledge of local advice and support services increased on average by 118%.
- * Confidence using online tools and resources increased by 57%.
- * Clients were supported to access Cost of Living grants with a combined value of £10,800.
- * 100% of respondents gave the service 10 out 10 on satisfaction.

Our Plans for 2023/24 and Beyond

- * Delivery of winter HAF programme for young people at ARC Youth Club.
- * Presentation of Kilburn Activators work on the "One Kilburn" project and planning next steps.
- * Bringing more resident led projects to life as part of the "Community Champions" project and next steps to sustain work beyond March 2024.
- * Eco-audit of SHAK buildings and implementation of changes to save resources and put us on a more sustainable environmentally friendly footing.
- * Community consultation and strategy review in 2024.
- * Fundraising to sustain the great work outlined in this report going forward.

Governance

The trustees, who are also directors of the charity for the purposes of the Companies Act, submit their annual report and the financial statements for the year ended 31 March 2023. The trustees have adopted the provisions of the Statement of Recommended Practice (SORP) "Accounting and Reporting by Charities" in preparing the annual report and financial statements of the charity.

Structure and governance

The charity is regulated by its Memorandum and Articles of Association incorporated on 25 November 2003 as amended by special resolution on 22 January 2009.

The company is limited by guarantee and therefore has no share capital. Every member of the charity undertakes to contribute such amount as may be required, not exceeding £1, to the charity's assets if it should be wound up while they are a member or within one year after they cease to be a member.

The company's charitable status was confirmed by the Charity Commission on 24 February 2009.

Training is and will continue to be provided as and when trustees are inducted.

Trustees' responsibilities

The trustees, who are also directors of the company for the purposes of company law, are responsible for preparing the Trustees' Report and the financial statements in accordance with applicable law and United Kingdom

Accounting Standards (United Kingdom Generally Accepted Accounting Practice).

Company law requires the trustees to prepare financial statements for each financial year, which give a true and fair view of the state of affairs of the charitable company and of the incoming resources and application of resources, including the income and expenditure, of the charitable company for the year. In preparing these financial statements, the trustees are required to:

- select suitable accounting policies and then apply them consistently,
- observe the methods and principles in the Charities SORP,
- make judgements and estimates that are reasonable and prudent,
- state whether applicable UK Accounting Standards have been followed, subject to any material departures disclosed and explained in the financial statements,
- prepare the financial statements on the going concern basis unless it is inappropriate to presume that the charitable company will continue in operation.

The trustees are responsible for keeping proper accounting records that disclose with reasonable accuracy at any time the financial position of the charitable company and enable them to ensure that the financial statements comply with the Companies Act 2006. They are also responsible for safeguarding the assets of the charitable company and hence for taking reasonable steps for the prevention and detection of fraud and other irregularities.

Disclosure of information to independent examiner

Each of the trustees has confirmed that there is no information of which they are aware which is relevant to the independent examination, but of which the independent examiner is unaware. They have further confirmed that they have taken appropriate steps to identify such relevant information and to establish that the independent examiner is aware of such information.

Risk assessment

The charity has a policy of identifying, monitoring and managing risks that might adversely affect the activities in which it is involved. Risk is defined as the potential to fail to achieve the charity's objectives and for loss, whether financial or reputational.

During the year the charity has been identifying, evaluating, and managing the significant risks it faces, and these are reviewed by the trustees regularly. Where risks have been identified appropriate action has been taken to mitigate them.

Reserves policy

The charity's reserve policy is to maintain sufficient reserves to enable operating activities to be maintained, taking account of potential risks that may arise from time to time. We aim to hold at least 3 months of operating costs. This policy is reviewed regularly by the trustees.

Principal Activities

The principal activity of the charity is to fulfil its objects in Camden and

particularly within a one-mile radius of Rowley Way Tenant's Hall. The main objects are:

- To provide recreational and leisure-time activity in the interests of social welfare for people in the Area of Benefit who have need by reason of their youth, age, infirmity or disability, poverty, or social and economic circumstances to improve their conditions of life.
- To relieve poverty and unemployment, advance education and to foster understanding between people of different ages and backgrounds.
- To support young people (under 25) with positive activities which develop their skills, capacities and capabilities and promote their participation in society as independent, mature, and responsible individuals.
- To achieve the above objectives by associating together the said inhabitants and the local authorities, voluntary and other organisations in a common effort to advance education and social welfare.

The trustees have referred to the guidance contained in the Charity Commission's general guidance on public benefit when reviewing the aims and objectives and in planning future activities.

Volunteers

The charity is grateful for the unstinting efforts of its volunteers whose efforts are invaluable to the running of the charity.

Financial Review

SHAK has maintained levels of income and even secured an increase in funding for charitable activities for 22-23. This has been achieved with the aid of sound financial management and the support of both its staff and volunteers.

New incoming funds include renewed funding from the "Hampstead Wells & Campden Trust" and important new funding from the "Camden Resilience fund" which is allowing SHAK to work on its sustainability for the future. We were also commissioned as part of "One Kilburn" project to employ three "activators" who have been working to consult and bring to life ideas which will improve the Kilburn High Road and surrounding area (Brent, Camden & Westminster boroughs).

Continuing funds from funders mentioned in this report allowed us to continue and expand our activities.

We also raise a small amount of funds by renting out our venues.

Looking forward the major challenge financially is to secure new funding streams for 2024-25 when several main funding contracts will be coming to an end.

A big thank you to all our funders and contributors in 2022-23.

We have not borrowed or invested any funds other than in bank deposit account and aim to provide services within the funding available.

We continuously aim to attract funding from a wide variety of sources – grants, donations, direct fundraising etc. to optimise the income available to provide a wide range of services to the community.

Independent Examiners

A resolution proposing that Goldwins Ltd be re-appointed as auditors of the charity will be put to the Annual General Meeting.

This report has been prepared in accordance with the Statement of Recommended Practice (SORP) "Accounting and Reporting by Charities" and the special provisions of Part 15 of the Companies Act 2006 relating to small companies.

On behalf of the Board



.....
Elena Besussi

Date: 29/11/2023

Independent Examiner's Report to the trustees of South Hampstead and Kilburn Community Partnership

Year ended 31 March 2023

I report to the charity trustees on my examination of the accounts of the Company for the year ended 31st March 2023.

Responsibilities and basis of report

As the charity's trustees of the Company (and also its directors for the purposes of company law) you are responsible for the preparation of the accounts in accordance with the requirements of the Companies Act 2006 ('the 2006 Act').

Having satisfied myself that the accounts of the Company are not required to be audited under Part 16 of the 2006 Act and are eligible for independent examination, I report in respect of my examination of your charity's accounts as carried out under section 145 of the Charities Act 2011 ('the 2011 Act'). In carrying out my examination I have followed the Directions given by the Charity Commission under section 145(5) (b) of the 2011 Act.

Independent examiner's statement

Since the company's gross income exceeded £250,000 your examiner must be a member of a body listed in section 145 of the 2011 Act. I confirm that I am qualified to undertake the examination because I am a member of The Institute of Chartered Accountants in England and Wales (ICAEW), which is one of the listed bodies.

I have completed my examination. I confirm that no matters have come to my attention in connection with the examination giving me cause to believe:

1. accounting records were not kept in respect of the Company as required by section 386 of the 2006 Act; or
2. the accounts do not accord with those records; or
3. the accounts do not comply with the accounting requirements of section 396 of the 2006 Act other than any requirement that the accounts give a 'true and fair view which is not a matter considered as part of an independent examination; or
4. the accounts have not been prepared in accordance with the methods and principles of the Statement of Recommended Practice for accounting and reporting by charities applicable to charities preparing their accounts in accordance with the Financial Reporting Standard applicable in the UK and Republic of Ireland (FRS 102).

I have no concerns and have come across no other matters in connection with the examination to which attention should be drawn in this report in order to enable a proper understanding of the accounts to be reached.

Anthony Epton

.....
Anthony Epton BA, FCA, CTA, FCIE
Goldwins Limited
Chartered Accountants
75 Maygrove Road
West Hampstead
London NW6 2EG

Date: 29 November 2023

South Hampstead and Kilburn Community Partnership
Statement of Financial Activities Including Income and Expenditure Account
Year ended 31 March 2023

	Note	Restricted Funds 2023 £	Unrestricted Funds 2023 £	Total Funds 2023 £	Total Funds 2022 £
<u>Income from:</u>					
Donations		-	600	600	153
Charitable activities	3	378,824	256	379,080	312,653
Investment income	4	-	2,906	2,906	41
Other income		-	-	-	-
Total income		378,824	3,762	382,586	312,847
<u>Expenditure on:</u>					
Charitable activities		310,461	(1,064)	309,397	290,111
Total expenditure	5	310,461	(1,064)	309,397	290,111
Net income for the year		68,363	4,826	73,189	22,736
Transfer between funds		-	-	-	-
Net movement in funds		68,363	4,826	73,189	22,736
<u>Reconciliation of funds:</u>					
	12				
Total funds brought forward		151,314	94,294	245,608	222,872
Total funds carried forward		219,677	99,120	318,797	245,608

All of the above results are derived from continuing activities.
There were no other recognised gains or losses other than those stated above.
The attached notes form part of these financial statements.

South Hampstead and Kilburn Community Partnership

Balance sheet

As at 31 March 2023


	Note	2023 £	2022 £
Tangible fixed assets	8	-	-
Current assets:			
Debtors	9	24,000	5,899
Cash at bank and in hand		<u>306,448</u>	<u>250,308</u>
		330,448	256,207
Creditors: amounts falling due within one year	10	<u>(11,651)</u>	<u>(10,599)</u>
Net current assets		<u>318,797</u>	<u>245,608</u>
Total net assets		<u><u>318,797</u></u>	<u><u>245,608</u></u>
Funds:	12		
Restricted funds		219,677	151,314
Unrestricted funds:		<u>99,120</u>	<u>94,294</u>
Total funds		<u><u>318,797</u></u>	<u><u>245,608</u></u>

For the financial year ended 31 March 2023 the company was entitled to exemption from audit under section 477 of the Companies Act 2006 relating to small companies.

The members have not required the company to obtain an audit of its financial statements for the year in question in accordance with section 476;

The directors acknowledge their responsibilities for complying with the requirements of the Act with respect to accounting records and the preparation of financial statements.

Approved by the trustees on 29/11/2023 and signed on their behalf by:



Jade Fox

Director

Company registration no. 04975299

The attached notes form part of the financial statements.

South Hampstead and Kilburn Community Partnership

Notes to the financial statements

Year ended 31 March 2023

1 Accounting policies

a) Basis of preparation

The financial statements have been prepared in accordance with Accounting and Reporting by Charities: Statement of Recommended Practice applicable to charities preparing their accounts in accordance with the Financial Reporting Standard applicable in the UK and Republic of Ireland (FRS 102 - effective 1 January 2015) - Charities SORP (FRS 102) and the Companies Act 2006.

The charitable company meets the definition of a public benefit entity under FRS 102. Assets and liabilities are initially recognised at historical cost or transaction value unless otherwise stated in the relevant accounting policy or note.

b) Going concern

The trustees consider that there are no material uncertainties about the charitable company's ability to continue as a going concern. The trustees do not consider that there are any sources of estimation uncertainty at the reporting date that have a significant risk of causing a material adjustment to the carrying amounts of assets and liabilities within the next reporting period.

c) Income

Income is recognised when the charity has entitlement to the funds, any performance conditions attached to the income have been met, it is probable that the income will be received and that the amount can be measured reliably.

Income from government and other grants, whether 'capital' grants or 'revenue' grants, is recognised when the charity has entitlement to the funds, any performance conditions attached to the grants have been met, it is probable that the income will be received and the amount can be measured reliably and is not deferred. Income received in advance for the provision of specified service is deferred until the criteria for income recognition are met.

d) Donations of gifts, services and facilities

Donated professional services and donated facilities are recognised as income when the charity has control over the item or received the service, any conditions associated with the donation have been met, the receipt of economic benefit from the use by the charity of the item is probable and that economic benefit can be measured reliably. In accordance with the Charities SORP (FRS 102), volunteer time is not recognised so refer to the trustees' annual report for more information about their contribution.

On receipt, donated gifts, professional services and donated facilities are recognised on the basis of the value of the gift to the charity which is the amount the charity would have been willing to pay to obtain services or facilities of equivalent economic benefit on the open market; a corresponding amount is then recognised in expenditure in the period of receipt.

e) Interest receivable

Interest on funds held on deposit is included when receivable and the amount can be measured reliably by the charity; this is normally upon notification of the interest paid or payable by the bank.

f) Fund accounting

Unrestricted funds are available to spend on activities that further any of the purposes of charity. Designated funds are unrestricted funds of the charity which the trustees have decided at their discretion to set aside to use for a specific purpose. Restricted funds are donations which the donor has specified are to be solely used for particular areas of the charity's work or for specific projects being undertaken by the charity.

South Hampstead and Kilburn Community Partnership

Notes to the financial statements

Year ended 31 March 2023

1 Accounting policies (continued)

g) Expenditure and irrecoverable VAT

Expenditure is recognised once there is a legal or constructive obligation to make a payment to a third party, it is probable that settlement will be required and the amount of the obligation can be measured reliably. Expenditure is classified under the following activity headings:

- Costs of raising funds comprise of trading costs and the costs incurred by the charitable company in inducing third parties to make voluntary contributions to it, as well as the cost of any activities with a fundraising purpose.
- Expenditure on charitable activities includes the costs of delivering services to further the purposes of the charity and their associated support costs.
- Other expenditure represents those items not falling into any other heading.

Irrecoverable VAT is charged as a cost against the activity for which the expenditure was incurred.

h) Allocation of support costs

Support costs are those functions that assist the work of the charity but do not directly undertake charitable activities. Support costs include back office costs, finance, personnel, payroll and governance costs which support the charity and its activities. These costs have been allocated between cost of raising funds and expenditure on charitable activities.

i) Operating leases

Rental charges are charged on a straight line basis over the term of the lease.

j) Tangible fixed assets

Items of equipment are capitalised where the purchase price exceeds £1,000. Depreciation is provided at rates calculated to write down the cost of each asset to its estimated residual value over its expected useful life on a straight line basis. The depreciation rates in use are as follows:

~ Play Equipment	Straight Line over 2 years
~ Computer & Music Equipment	Straight Line over 3 years
~ Office Furniture	Straight Line over 5 years

k) Debtors

Trade and other debtors are recognised at the settlement amount due after any trade discount offered. Prepayments are valued at the amount prepaid net of any trade discounts due.

l) Cash at bank and in hand

Cash at bank and cash in hand includes cash and short term highly liquid investments with a short maturity of three months or less from the date of acquisition or opening of the deposit or similar account.

m) Creditors and provisions

Creditors and provisions are recognised where the charity has a present obligation resulting from a past event that will probably result in the transfer of funds to a third party and the amount due to settle the obligation can be measured or estimated reliably. Creditors and provisions are normally recognised at their settlement amount after allowing for any trade discounts due.

n) Financial instruments

The charity only has financial assets and financial liabilities of a kind that qualify as basic financial instruments. Basic financial instruments are initially recognised at transaction value and subsequently measured at their settlement value with the exception of bank loans which are subsequently measured at amortised cost using the effective interest method.

South Hampstead and Kilburn Community Partnership

Notes to the financial statements

Year ended 31 March 2023

2 Detailed comparatives for the statement of financial activities

<u>Income from:</u>	Restricted	Unrestricted	Total
	2022	2022	2022
	£	£	£
Donations	-	153	153
Charitable activities	308,875	3,778	312,653
Investment income	-	41	41
Total income	308,875	3,972	312,847
Charitable activities	296,124	(6,013)	290,111
Total expenditure	296,124	(6,013)	290,111
Net income for the year	12,751	9,985	22,736
Transfer between funds	-	-	-
Net movement in funds	12,751	9,985	22,736
<u>Reconciliation of funds:</u>			
Total funds brought forward	138,563	84,309	222,872
Total funds carried forward	151,314	94,294	245,608

3 Income from charitable activities

	Restricted	Unrestricted	Total	Total
	2023	2023	2023	2022
	£	£	£	£
Alexandra and Ainsworth Estate	3,875	256	4,131	-
BBC Children In Need	10,499	-	10,499	9,999
Big Lottery Fund	46,723	-	46,723	54,415
C4consortium	-	-	-	2,000
John Lyons	66,000	-	66,000	-
Mind In Camden London	-	-	-	400
LB of Camden	197,848	-	197,848	162,761
Paddington Development Trust (PDT)	-	-	-	19,662
Pears Foundation	10,000	-	10,000	5,000
Siding Community Centre	-	-	-	1,000
The Hampstead Wells and Camden Trust	15,000	-	15,000	10,000
Trust for London	13,500	-	13,500	13,500
Young Camden Foundation	11,142	-	11,142	6,848
Young Londoners Fund	4,237	-	4,237	27,068
	378,824	256	379,080	312,653

4 Income from investments

	Restricted	Unrestricted	Total	Total
	2023	2023	2023	2022
	£	£	£	£
Bank interest	-	721	721	41
Rent	-	2,185	2,185	-
	-	2,906	2,906	41

South Hampstead and Kilburn Community Partnership

Notes to the financial statements

Year ended 31 March 2023

5 Analysis of expenditure

	Charitable activities £	Support costs £	Governance Costs £	Total 2023 £	Total 2022 £
Salaries and other staff costs	194,132	44,058	-	238,190	225,938
Bank charges	-	780	-	780	500
Computer, internet and website expenses	-	1,876	-	1,876	2,015
Other direct costs of charitable activities	35,390	-	-	35,390	25,251
Premises expenses	18,500	9,145	-	27,645	29,815
Sundry expenses	-	1,296	-	1,296	675
Telephone	1,916	-	-	1,916	2,123
Independent examination fee	-	-	2,250	2,250	2,052
Independent examination fee prior year adjustment	-	-	54	54	50
Legal & professional fee	-	-	-	-	1,692
	249,938	57,155	2,304	309,397	290,111
Support costs	57,155	(57,155)	-	-	-
Governance costs	2,304	-	(2,304)	-	-
Total expenditure 2023	309,397	-	-	309,397	
Total expenditure 2022	290,111	-	-		

Of the total expenditure, £310,461 (2022: £296,124) was restricted and £-1,064 (2022: £-6,013) was unrestricted.

South Hampstead and Kilburn Community Partnership**Notes to the financial statements****Year ended 31 March 2023****6 Analysis of staff costs, trustee remuneration and expenses, and the cost of key management personnel**

Staff costs were as follows:

	2023	2022
	£	£
Salaries and wages	217,002	205,179
Social security costs	14,305	12,317
Pension costs	5,147	4,866
Other staff costs	1,736	3,576
	238,190	225,938

None of the employees received employee benefits (excluding employer pension) during the year over £60,000 (2022: None).

The total employee benefits including pension contributions of the key management personnel were £49,332 (2022: £49,726).

The charity trustees were not paid or received any other benefits from employment with the charity in the year (2022: nil) nor were they reimbursed expenses during the year (2022: nil). No charity trustee received payment for professional or other services supplied to the charity (2022: nil).

The average number of employees (headcount based on the number of staff employed) during the year was 9 (2022: 10).

7 Taxation

The charitable company is exempt from corporation tax as all its income is charitable and is applied for charitable purposes.

8 Tangible fixed assets

	Fixtures & Fittings	Total
Cost	£	£
At the start of the year	6,465	6,465
Additions	-	-
Disposals	-	-
At the end of the year	6,465	6,465
Depreciation		
At the start of the year	6,465	6,465
Disposals	-	-
Charge for year	-	-
At the end of the year	6,465	6,465
Net book value		
Brought forward	-	-
Carried forward	-	-

All of the above assets are used for charitable purposes.

South Hampstead and Kilburn Community Partnership

Notes to the financial statements

Year ended 31 March 2023

9 Debtors

	2023	2022
	£	£
Grants receivable	24,000	5,899
Total	24,000	5,899

10 Creditors: amounts falling due within one year

	2023	2022
	£	£
Other creditors	9,401	8,547
Accruals	2,250	2,052
Total	11,651	10,599

11 Analysis of net assets between funds

Year ended 31 March 2023

	General unrestricted	Restricted	Total funds
	£	£	£
Tangible fixed assets	-	-	-
Net current assets	99,120	219,677	318,797
Net assets at the end of the year	99,120	219,677	318,797

Year ended 31 March 2022

	General unrestricted	Restricted	Total funds
	£	£	£
Tangible fixed assets	-	-	-
Net current assets	94,294	151,314	245,608
Net assets at the end of the year	94,294	151,314	245,608

South Hampstead and Kilburn Community Partnership

Notes to the financial statements

Year ended 31 March 2023

12 Funds

Year ended 31 March 2023

	At the start of the year £	Income £	Expenditure £	Transfers	At the end of the year £
Restricted funds:					
BBC Children in need	-	10,499	(10,499)	-	-
Big Lottery Fund: Reaching Communities	8,403	46,723	(46,126)	-	9,000
C4consortium Capital	538	-	(538)	-	-
Camden Detached Youth Team	3,013	-	-	-	3,013
Hampstead Wells and Camden Trust	10,000	15,000	(10,000)	-	15,000
John Lyons	-	66,000	(24,000)	-	42,000
LB of Camden: Camden Community Champions	71,235	50,500	(50,609)	-	71,126
LB of Camden: Community Infrastructure Levy	1,386	-	(1,386)	-	-
LB of Camden: Food Power	6,453	-	(4,453)	-	2,000
LB of Camden: Rent	-	10,000	(10,000)	-	-
LB of Camden: Strategic Partner (Shell)	6,428	38,369	(20,642)	-	24,155
LB of Camden: Youth Work Fund	4,066	29,254	(23,320)	-	10,000
LB of Camden: Kilburn Activators	-	24,000	(4,212)	-	19,788
LB of Camden: Kilburn Cost of Living Grant	-	2,000	(587)	-	1,413
LB of Camden: Camden Resilience Fund	-	14,740	(14,740)	-	-
LB of Camden: Organisational Development Fund	-	4,985	(290)	-	4,695
Mind in Camden (CAP)	262	-	(262)	-	-
Paddington Development Trust	2,188	-	(2,188)	-	-
Pears Foundation	5,000	10,000	(4,303)	-	10,697
Skills Funding Agency	-	24,000	(24,000)	-	-
Tenant Residents Association	-	3,875	(1,647)	-	2,228
Trust for London	13,500	13,500	(23,538)	-	3,462
Young Camden Foundation - HAF	1,383	11,142	(11,425)	-	1,100
Young Londoners Fund	17,459	4,237	(21,696)	-	-
Total restricted funds	151,314	378,824	(310,461)	-	219,677
Unrestricted funds	94,294	3,762	1,064	-	99,120
Total Funds	245,608	382,586	(309,397)	-	318,797

South Hampstead and Kilburn Community Partnership

Notes to the financial statements

Year ended 31 March 2023

12 Funds (continued)

Year ended 31 March 2022

	At the start of the year £	Income £	Expenditure £	Transfers	At the end of the year £
Restricted funds:					
BBC Children in need	1,860	9,999	(11,859)	-	-
Big Lottery Fund: Reaching Communities	-	54,415	(46,012)	-	8,403
C4consortium Capital	-	2,000	(1,462)	-	538
Camden Detached Youth Team	-	6,000	(2,987)	-	3,013
Hampstead Wells and Camden	-	10,000	-	-	10,000
LB of Camden: Camden Community Champions LB	67,963	50,000	(46,728)	-	71,235
of Camden: Community Infrastructure Levy	5,464	-	(4,078)	-	1,386
LB of Camden: Food Power	11,703	2,500	(7,750)	-	6,453
LB of Camden: Rent	-	10,000	(10,000)	-	-
LB of Camden: Strategic Partner (Shell)	11,449	38,368	(43,389)	-	6,428
LB of Camden: Youth Work Fund	15,406	29,115	(40,455)	-	4,066
Mind in Camden (CAP)	-	400	(138)	-	262
Paddington Development Trust	2,189	19,662	(19,663)	-	2,188
Pears Foundation	-	5,000	-	-	5,000
Skills Funding Agency	2,258	24,000	(26,258)	-	-
Tenant Residents Association	-	800	(800)	-	-
Trust for London	-	13,500	-	-	13,500
Young Camden Foundation - HAF	1,432	6,848	(6,897)	-	1,383
Young Londoners Fund	18,839	26,268	(27,648)	-	17,459
Total restricted funds	138,563	308,875	(296,124)	-	151,314
Unrestricted funds	84,309	3,972	6,013	-	94,294
Total Funds	222,872	312,847	(290,111)	-	245,608

Restricted funds:

Purposes of the restricted funds as follows:

BBC Children in Need

Towards the activities for young people.

Big Lottery Fund: Reaching Communities

Funding for "Living and Learning Together" project.

C4 Consortium Capital

Towards ICT learning equipment.

Camden Detached Youth Team

Towards youth outreach activities

Hampstead Wells and Campden Trust

Contribution towards the core cost of the Organisation.

South Hampstead and Kilburn Community Partnership

Notes to the financial statements

Year ended 31 March 2023

12 Funds (continued)

John Lyons

Activities for young people.

LB of Camden: Camden Community Champions

Resident led project to improve health and wellbeing.

LB of Camden: Community Infrastructure Levy

To improve the SHAK communities' facilities.

LB of Camden: Food Power

Support "SHAK Chef" project.

LB of Camden: Rent

This represents the value of the annual rental of property made available to the charity by Camden Council for the running of the ARC Youth Club.

LB of Camden: Strategic Partner

Support for SHAK core costs, youth project, learning and employability activities.

LB of Camden: Youth Work Fund

Funding towards youth services at ARC Centre.

LB of Camden: Kilburn Activators

"One Kilburn" project to consult and improve in Kilburn High Road area.

LB of Camden: Kilburn Cost of Living Grant

Towards "SHAK Chef" project.

LB of Camden: Camden Resilience Fund

To improve resilience and sustainability of SHAK

LB of Camden: Organisational Development Fund

Towards the development of the organisation

Mind in Camden (CAP)

Support for health and wellbeing sessions.

Paddington Development Trust

Towards employment support.

Pears Foundation

Towards the charitable activities of the organisation

Skills Funding Agency

To fund learning programmes at the SHELL Centre.

Tenant Residents Association

Contribution towards "SHAK Chef" project

Trust for London

Advice and guidance project.

South Hampstead and Kilburn Community Partnership

Notes to the financial statements

Year ended 31 March 2023

12 Funds (continued)

Young Camden Foundation - HAF

Food and activities for young people and supporting activities & food for young people during school holidays (HAF)

Young Londoners Fund

Activities for young people.

13 Analysis of cash and cash equivalents

	Brought forward	Cash flows	Other changes	Carried forward
	£	£	£	£
Cash at bank and in hand	250,308	56,140	-	306,448
Total cash and cash equivalents	250,308	56,140	-	306,448

14 Operating lease commitments

Total future minimum lease payments under non-cancellable operating leases are as follows:

	Property	
	2023	2022
	£	£
Less than 1 year	4,250	4,250
	4,250	4,250

15 Legal status of the charity

The company is limited by guarantee and therefore has no share capital. Every member of the partnership undertakes to contribute such amount as it may be required, not exceeding £1, to the charity's assets if it should be wound up while they are a member or within one year after they cease to be a member.

16 Related party transactions

There are no related party transactions to disclose for the year (2022: none).

There are no donations from related parties which are outside the normal course of business and no restricted donations from related parties.

www.shakonline.co.uk

Company limited by guarantee no. 04975299
Registered charity in England and Wales no. 1128207