

The Froylife Trust

*Leaping forward for amphibian
and reptile conservation*

Working together to save the species



ANNUAL REPORT AND ACCOUNTS October 2020 - September 2021



TRANSFORMING LANDSCAPES

TRANSFORMING LIVES

TRANSFORMING RESEARCH

CONTENTS

ABOUT FROGLIFE.....	3
ACHIEVING OUR VISION AND MISSION.....	5
PUBLIC BENEFIT	5
HEALTH & SAFETY	6
ENVIRONMENTAL ACTIONS	6
STRUCTURE, GOVERNANCE AND MANAGEMENT	7
REMUNERATION OF KEY MANAGEMENT PERSONNEL	8
TRANSFORMING LANDSCAPES.....	10
TRANSFORMING LIVES.....	13
TRANSFORMING RESEARCH	19
TRANSFORMING PEOPLE	20
TRANSFORMING FROGLIFE ECOLOGICAL SERVICES (FES)	23
TRANSFORMING OUR FUTURE.....	24
RISK MANAGEMENT AND INTERNAL CONTROLS.....	24
FINANCIAL REVIEW.....	31
STATEMENT OF TRUSTEES' RESPONSIBILITIES	33
ACCOUNTS	34



ABOUT FROGLIFE

The Froglife Trust (known as Froglife) is a national nature conservation charity with a specific focus on reptiles and amphibians and their habitats. Froglife's vision is a world in which reptile and amphibian populations are flourishing as part of healthy ecosystems. Amphibians are declining globally at a faster rate than birds and mammals, and as they are a crucial part of our ecosystem, it is essential that we work together to address these declines. Due to a lack of data we are less certain about the status of the UK's reptile species, but we are addressing this through our Discovering Reptiles project. We do have anecdotal evidence of adder declines where they have been lost entirely from counties that once had good populations. At Froglife we believe that we can reverse these declines by raising awareness, enhancing knowledge, restoring and creating habitats, undertaking species condition monitoring and surveying and encouraging as many people as possible from all sectors of society to take action. In order to ensure that our work is sustainable we deliver an extensive volunteer programme, training volunteers across the UK in species and habitat management. We also recognise that our donors want to be reassured that the habitat works that they are funding will remain in optimum condition for the foreseeable future, which of course also fits Froglife's objectives, in order to ensure this, we have a commitment in our Conservation Strategy to review all works undertaken by Froglife 1,3,5 & 10 years post completion.

Our work is grass roots, applied, evidence based conservation. The habitat work benefits countless species from aquatic invertebrates and plants to

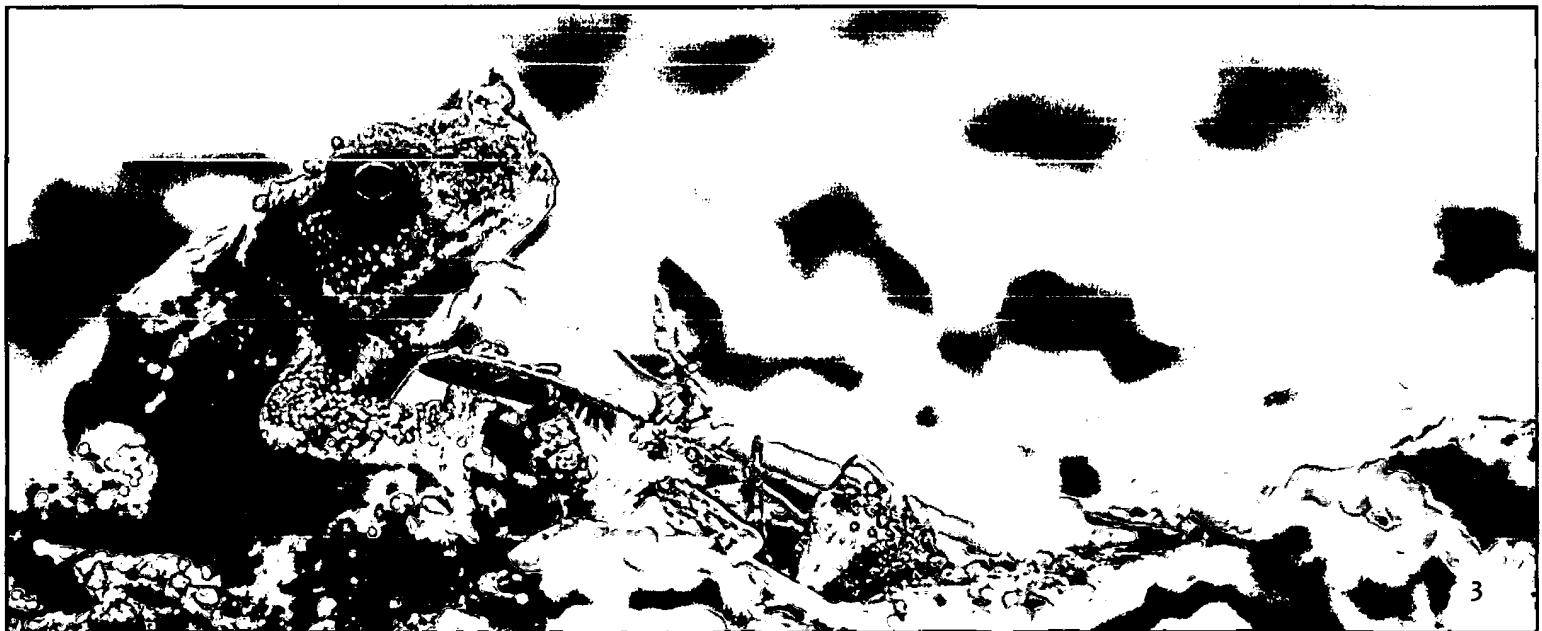
amphibians, reptiles, birds and mammals. Our conservation projects enhance the UK's biodiversity as a whole.

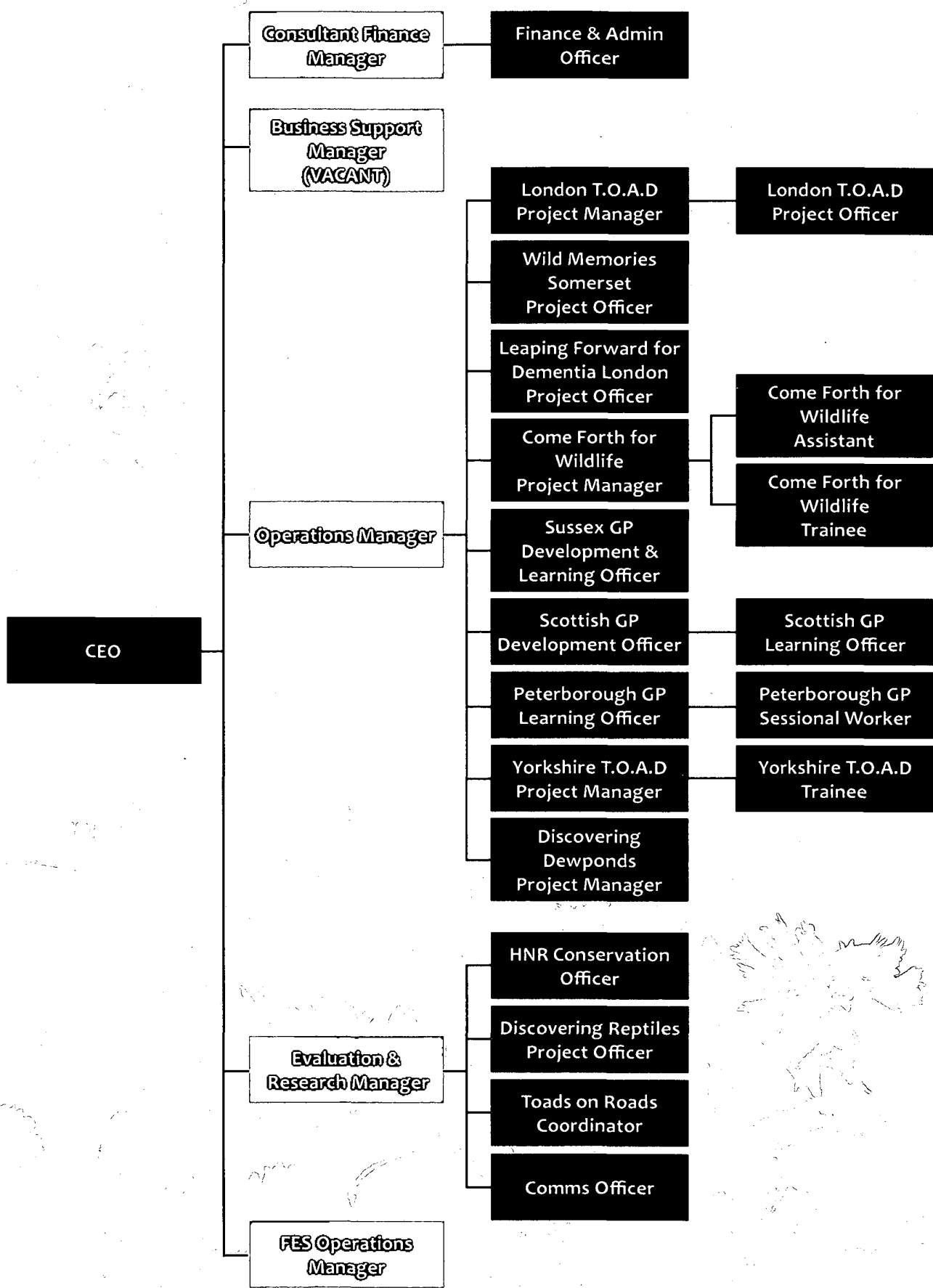
This holistic approach to nature conservation enables us to take individuals on a wildlife journey, whilst also delivering quantifiable results for our reptile and amphibian species.

The strategic direction of Froglife is set by the board of trustees, currently eight trustees, who bring a wide and diverse range of expertise and demographic including younger trustees. Our patrons also represent a wide demographic. During the pandemic the board of trustees started to meet more regularly, they have however now returned to regular quarterly meetings.

The delivery of the strategy and the day-to-day management of the organisation is delegated to the Chief Executive Officer (CEO) who is supported by the Senior Management Team (SMT). The SMT meet regularly usually every 8 weeks and organisational strategy, project delivery and financial management is reviewed at each meeting.

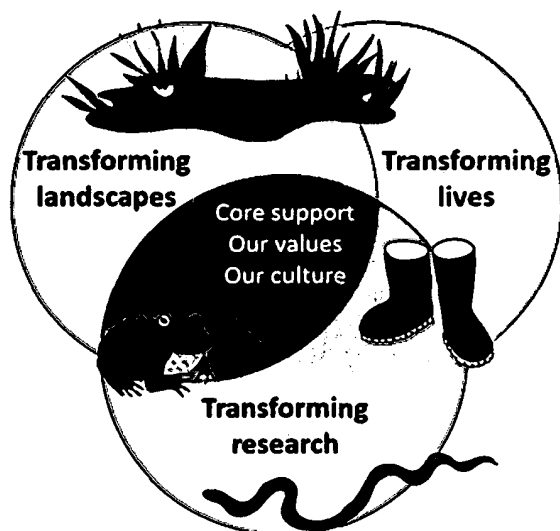
The pandemic did impact on our service delivery, however we have managed to catch up with all projects and we are back on track with delivery. As reported in the last Annual Review as a result of the impact of the pandemic we did undertake an organisational restructure. The restructure was fully implemented at the beginning of 2021 and has proved to be very successful. It has helped us to streamline our management approach which has helped enormously with ensuring that our work got back on track.





ACHIEVING OUR VISION AND MISSION

We achieve our vision and mission through three work streams:



Our work is underpinned through our organisation values:

- Froglife works inclusively but actively engages with those not usually involved in nature conservation.
- Froglife operates to the highest standards with all stakeholders.
- Froglife will have a positive impact on the environment through its activities.

Froglife will foster an environment that encourages innovation and diligence amongst staff, trustees and volunteers.

It is supported by:

- Our Finance Team
- Our facilities and resources
- Our communications and marketing

Froglife believes that it can only address the nature crisis by ensuring that those that engage with Froglife represent the full range of communities/demographics of the UK population. We focus particularly on socio-economically deprived communities as they are often excluded from benefiting from helping nature. We also focus on communities that for cultural/heritage reasons feel that they are not 'welcome' in the sector. This is demonstrated in the current projects that we are delivering and project that are in development.

Our work helps:

- To alleviate stress in busy urban environments.
- To improve mental and physical well-being.
- To build community cohesion.
- To foster environmentally friendly communities.

Our work is underpinned by our volunteer force which includes volunteer groups working on nature reserves managed by Froglife and the Toads on Roads patrollers. This year 569 volunteers helped us contributing a total of 3,984 hours. We continued to see a drop in volunteer days and numbers during the pandemic, however as already stated we are now catching up on targets.

PUBLIC BENEFIT

In carrying out their duties the trustees have had regard to public benefit guidance by the Charity Commission. The trustees note that the charitable activities focus on species conservation and public involvement. The work that the charity undertakes plays an important role in environmentally sustainable development creating more sustainable, resilient communities.

Within urban environments, plants filter pollutants and absorb carbon dioxide from the air, helping to improve air quality.

- Freshwater, such as ponds and lakes, act as carbon sinks.
- Aquatic habitats and plants help to stabilise high temperatures brought about by heat generated by buildings and transport systems.
- Green and blue spaces soften noise in urban environments.
- Freshwater, vegetation and soft ground help to alleviate the risk of flooding.
- Natural green spaces benefit the health and well-being of people.



HEALTH & SAFETY

The Board of Trustees have assessed the major risks to which the charity is exposed, in particular those relating to the operations, reputation, business and finances of the Froglife Trust and Froglife Ecological Services. The SMT assess and update the likelihood and impact of material risks on a risk management matrix, which is reviewed by the Board on a quarterly basis at trustee meetings. The Organisational Risk Assessment still reflects the actual and potential impacts of the pandemic.

A traffic light system is used to grade the level of the risk. This is reviewed quarterly to reflect the seasonality of the work that is taking place.

Health and safety procedures and generic and project specific risk assessments are reviewed annually in January. Health and Safety reports are a standing item on the quarterly Board agenda. One of our trustees is responsible for monitoring the Health and Safety and is made aware of all incidents, and when necessary, appropriate action is taken. Health and Safety is an important element of staff inductions, and where relevant, training is provided.

All staff working with young people and/or vulnerable adults have a clear DBS. All staff and trustees are obliged to attend a Safeguarding course every three years.

ENVIRONMENTAL ACTIONS

The Senior Management Team reviewed our Green Policy Action Plan in summer 2021 with all staff. We looked in detail at our utilities data over the past 2 years and reasons for changes in that period, in order to continuously improve our performance. We presented a project case study demonstrating good practice and shared ideas of how to improve performance in our project delivery. The ideas on re-use and new initiatives in the sharing and loaning economy were particularly useful.

Our environmental work was recognised by the National Lottery Heritage Fund when our London Tails of Amphibians Discovery project was shortlisted for the Sustainability Award in spring 2021.

Froglife was one of a few organisations that were selected to run an Exhibition Stall in the Green Zone of the COP26 Climate Change conference on November 1st. The aim of our stall was to highlight the importance of ponds as carbon sinks and biodiversity, and encourage people to take action by creating ponds themselves. We ran a high profile communications campaign in the run up to COP26 which included gathering messages from our supporters and taking them to share at COP26 to help make their voices heard.

STRUCTURE, GOVERNANCE AND MANAGEMENT

Registered Name: The Froglife Trust operating under the name of Froglife.

Charity Registration Number:
1093372 (England and Wales)
SC041854 (Scotland)

Bankers: Barclays Bank Plc, 1 Church Street,
Peterborough, PE1 1XE.

Auditors: Saffery Champness, Chartered Accountants,
Westpoint, Peterborough Business Park, Lynch Wood,
Peterborough, PE2 6FZ.

The trust is a company limited by guarantee and is constituted by its trust deed. The trust has three patrons Mr Jules Howard, Ms Kate Bradbury and Miss Mya-Rose Craig. Together they bring a wealth of wildlife conservation, education, digital technology, broadcasting and writing skills.

The trustees, who are also directors for the purpose of company law, and who served during the year were:

Inez Smith (Chair)

Professor Roger Downie (Vice Chair)

Mr Richard Donoyou

Mr Frank Clark

Dr Philip Wheeler

Dr Silviu Petrovan

Mr Gordon MacLennan

Appointed on 16th December 2021 Mr Xavier Mahele

The 2018/19 skills audit identified skills and demographic gaps the board has gone some way to

address this through the appointment of Mr Xavier Mahele who brings ethnic diversity and youth (18 year old). In order to ensure that Xavier has a clear understanding of the responsibilities of a trustee he has over the past year been mentored by our Vice Chair, Professor Roger Downie and during the year has attended every trustee meeting as an observer. As we have now reached the number of trustees that we believe is effective we will not appoint any new trustees until a vacancy arises from the existing trustees.

None of the trustees have any beneficial interest in the company. All of the trustees are members of the company and guarantee to contribute £1 in the event of insolvency.

The Froglife Trust is governed by its Trustee Board which is responsible for setting the objectives and policies of the charity. The trustees ensure that the charity satisfies its legal and contractual obligations. The Board of Trustees meet at a minimum quarterly.

Senior Management Team (The Froglife Trust) consists of:

CEO – Kathy Wormald

Operations Manager – Sheila Gundry

Conservation, Evaluation & Research Manager – Jenny Tse-Leon

Senior Management Team (Froglife Ecology Services) consists of:

CEO – Kathy Wormald

Operations Manager – James McAdie



REMUNERATION OF KEY MANAGEMENT PERSONNEL

In 2019 the trustees agreed that provided the organisation is in a financial position to honour pay increases, all staff will receive a pay increase in April each year in line with the CPIH measure as of the January of that year. Unfortunately due to the pandemic this increase was not honoured in 2020. Depending on the charities financial situation this decision will be reviewed in December 2021.

Other pay reviews are undertaken on a staff-by-staff basis and are increased if roles have changed and they have moved into the next grade. The CEO's salary is set and reviewed by the board of trustees on guidance from the chair. The last review was in July 2012 to make the salary comparable to other CEO positions in the sector with a similar level of responsibility, since then the CEO has received the standard annual increase in line with all staff.

Relationships with related parties and any other charities and organisations with which Froglife co-operates in the pursuit of its charitable objectives.

Froglife co-operates and works in partnership with a

wide range of organisations and charities including those working within the nature conservation sectors and from the wider charitable sector. Froglife works closely with numerous local and central councils, schools, colleges, universities and corporate partners.

We are very active in Scottish Environment LINK (Scot LINK), a network of 30 plus environment, built heritage and nature organisations. Froglife sits on various fora and has over the year commented on many policy papers. We represent the sector on the Natural Scotland Strategical Alliance project group which is seeking ways in which as a sector we can collaborate more closely and inform Scottish Government decision making. After the recent elections with the support of Scot LINK we have recruited new MSPs to support our species and habitats.

We are an Evidence Champion for Conservation Evidence and sit on the Conservation Evidence working group. We are a member of Cambridge Conservation Forum representing conservation organisations worldwide.



Froglife has worked closely with PTES to coordinate an NGO response to proposed changes to the eligibility criteria for species to be listed on the schedules of the Wildlife and Countryside Act (1981) through the current Quinquennial Review (QQR7). An open letter opposing these changes and calling for a formal consultation on the changes was signed by 34 NGOs including RSPB, The Wildlife Trust and RSPCA. As a result NGO stakeholder meetings have been held, the consultation phase has been extended from 1 month to 3 months and its scope expanded to include the eligibility criteria.

Sheila Gundry, Operations Manager, was a Fellow of the National Association for Environmental Education (NAEE) for much of this period and has written a number of articles for their Journal.

Froglife contributed and is a signatory to a Buglife led Brief to Parliament about light pollution calling for more serious consideration to be given to this issue and the negative impact that light pollution is having on many native species in the new Environment Bill.

We have remained a crucial partner in the Garden Wildlife Health Forum and have contributed actively through reporting amphibian disease/mortality reports through our email INFO service and social media and have attended regular partnership meetings.

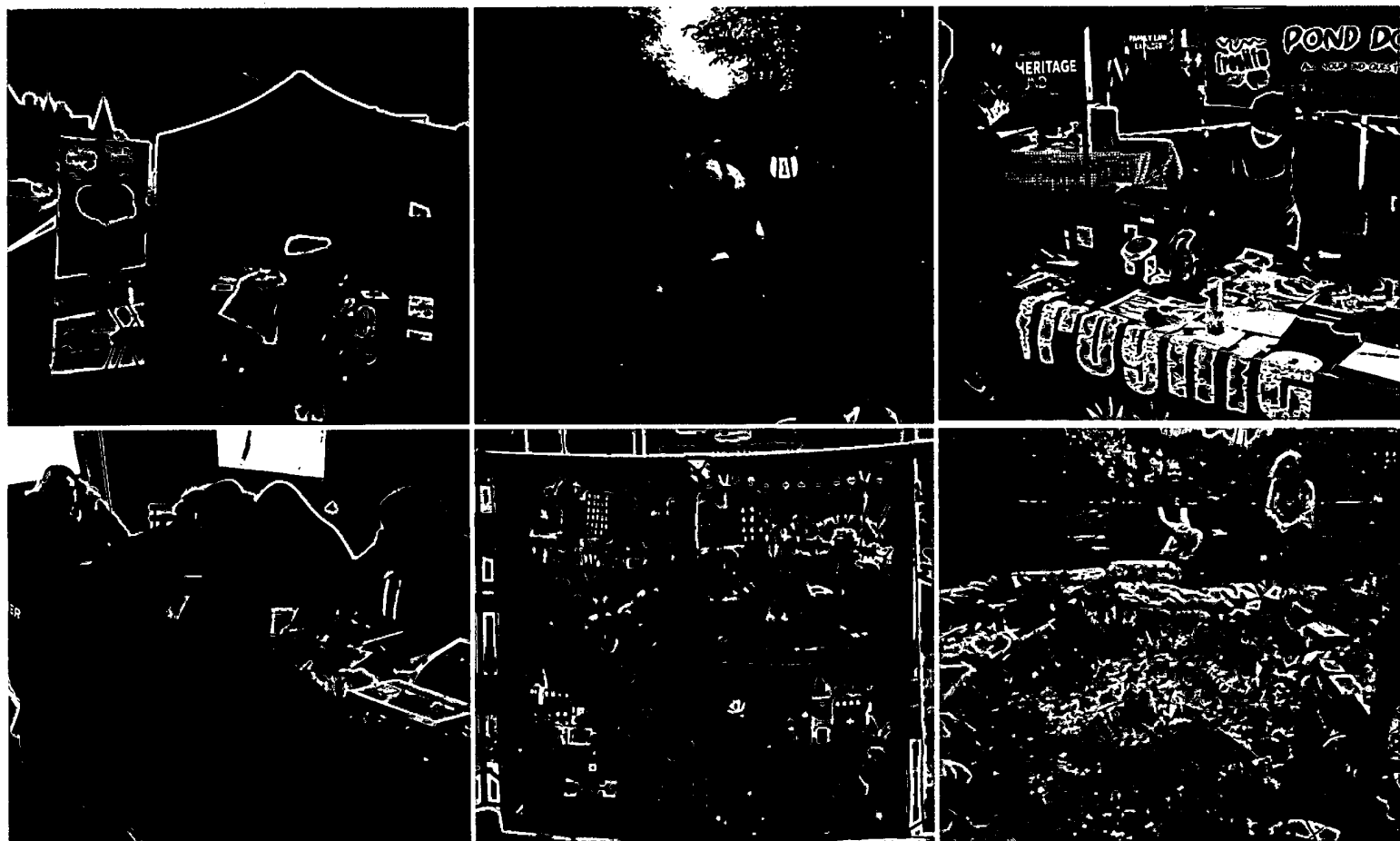
We sit on various fundraising, business support, woman leadership, corporate and other groups all of which help to inform our operations but also raised the profile of Froglife.

. We became a member of Stop Climate Chaos Scotland (SCCS); a diverse coalition of over 60 civil society organisations in Scotland campaigning together on climate change.

PANDEMIC

The ongoing impact of the pandemic and further lock-downs since our last Annual Review has been challenging. We have taken further advantage of the Government Furlough Scheme for staff where it was impossible to deliver. We tried to keep the number of staff in furlough as low as possible as we believe that it was not ethical to put this burden on tax payers unless it was essential, and if we could deliver in an alternative way then we must do so. At the end of the last lock-down all staff were fully back at work and returned to full delivery.

We are also pleased to see grant funding coming back on-stream and we would like to extend our gratitude to donors for doing this, it does really help. We feel that things are returning to some level of normality, and look forward to being as impactful as we were prior to the pandemic.

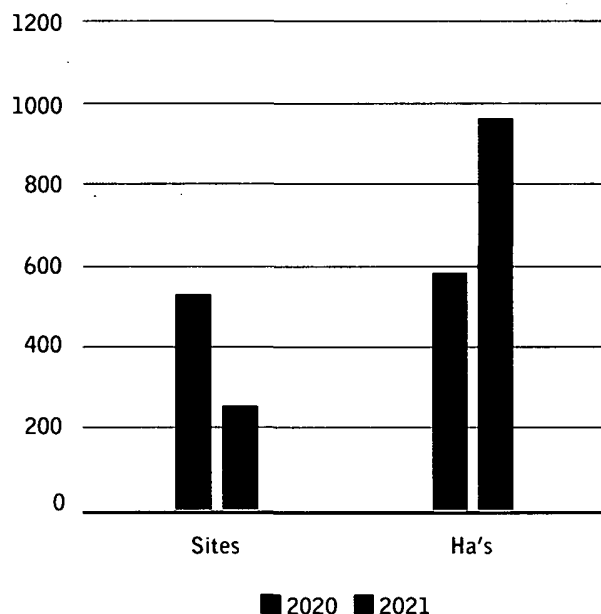


TRANSFORMING LANDSCAPES

How we did delivering our key indicators

As reported in our last Annual Review the pandemic did not impact on the habitat works. This year we have created and restored 255 sites. The amount of ha has also increased to 962. These works have dramatically improved habitats for reptiles and amphibians and a wide range of other wildlife that utilise the sites that we have worked on, including aquatic plants and invertebrates, birds and mammals.

Comparing 2019/20 to 2020/21

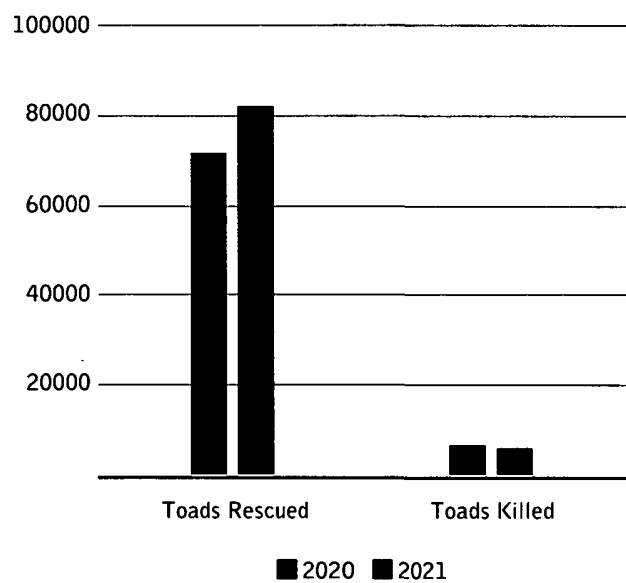


This year we improved 10% of the habitat at Hampton Nature Reserve for great crested newts, grass snakes, adders and bearded stonewort. This is thanks to a CES grant from Natural England. This year we have restored 159 areas on the reserve covering 103 ha.

The toad migration season took place in early spring again this year. Thanks to the toad patrols and their volunteers the number of toads rescued were 81,761 up on 2020. This compares to 71,000 in 2020. Unfortunately the return of traffic to the roads did mean a return of amphibian mortality on the roads.

Come Forth for Wildlife entered its second year and has continued to deliver against the targets often exceeding them. To date the project has improved

Comparing 2019/20 to 2020/21



134 sites covering 1,547 ha. . This has provided much needed connectivity between urban areas, nature reserves, and the wider rural environment.

London Tails of Amphibian Discovery entered its final year, however due to delays caused by the pandemic, the project has been extended to March 2022. This year it worked on 73 sites covering 9.7 ha this included working on 13 additional sites than originally planned. Froglife Ecological Services has worked on several London sites and these figures are reported within the FES report, but some relate to London Tails or Amphibian Discovery.

We were delighted to receive a Green Recovery Grant from the National Lottery Heritage Fund who are managing this Defra funding. The £247,800 is for our new Yorkshire Tails of Amphibian Discovery. This is an ambitious project that will be creating and restoring habitats on 21 wildlife sites, in total 54 freshwater habitats will benefit and we will be planting 5 wildflower meadows. The fund is for shovel ready projects and as such only has a one year duration with completion by March 2022, which means the Yorkshire team is very busy!

We have been awarded a National Heritage Lottery grant for our Discovering Dewponds (Sussex). The grant of £249,900 will be used to improve the

biodiversity status of 9 dewponds in the South East Downs. This project will be in full flow later this year and will run for a three year period.

Our Discovering Reptiles project has moved into year two and has been distributing reptile tins to landowners and managers around the country for them to undertake reptile surveys post the reptile training that they have received. We are looking forward to substantially increasing the number of records for reptiles that we have on our Dragon Finder App which will help us enormously with planning future works to benefit reptiles.

Our discussions with Peterborough City Council came to fruition and we are now proud to say that we have a 15 year License to Occupy both Eye Green and Boardwalks Nature Reserves. We do receive a fee for Eye Green Nature Reserve and we use this to leverage further funding to undertake wide scale habitat works on the reserve. Unfortunately Boardwalks Nature Reserve remains unfunded but we believe now that we have a 15 year license it will be easier to raise funds to undertake works on the reserve.

Our volunteer training programme is central to ensuring that our work is sustainable. All of our projects include a strong element of volunteer training and delivering volunteer days. This year we had 569 volunteers giving a total 3,984 hours helping us.

This year we saw high demand for our paid-for training programme. We delivered a total of 28 courses, these included courses attracting individuals and also bespoke courses delivered for companies. We suspect

that the demand was high due to having to cancel all training courses in 2020. We have had excellent feedback from the courses and are pleased that we have upskilled so many people who can now apply these skills when out in the field.

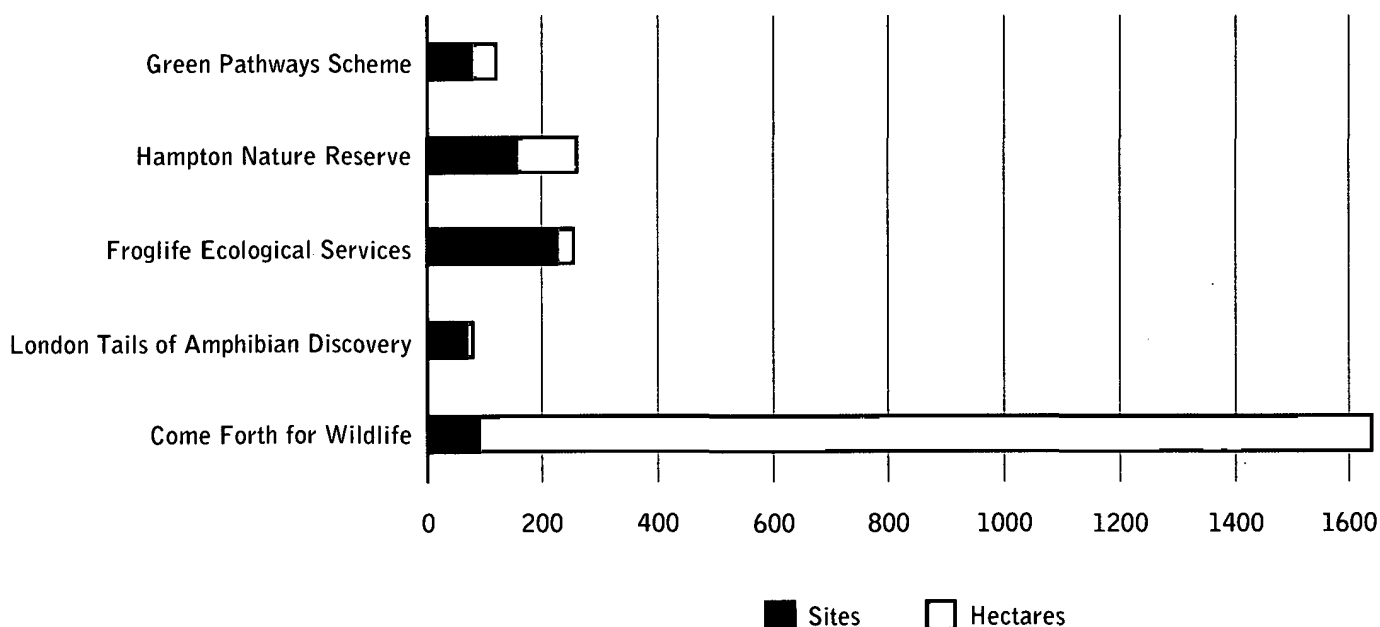
Our Transforming Lives programme has also contributed to our Transforming Landscapes programme improving 83 sites with project participants undertaking works on local allotments, green spaces, parks and community gardens.

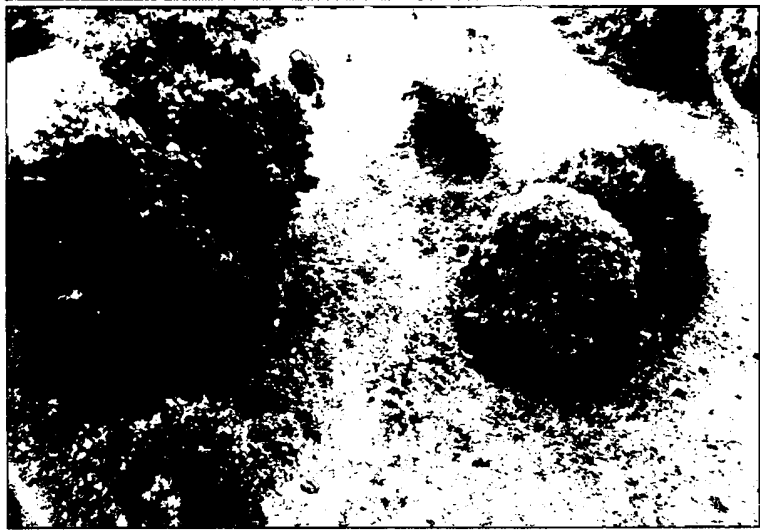
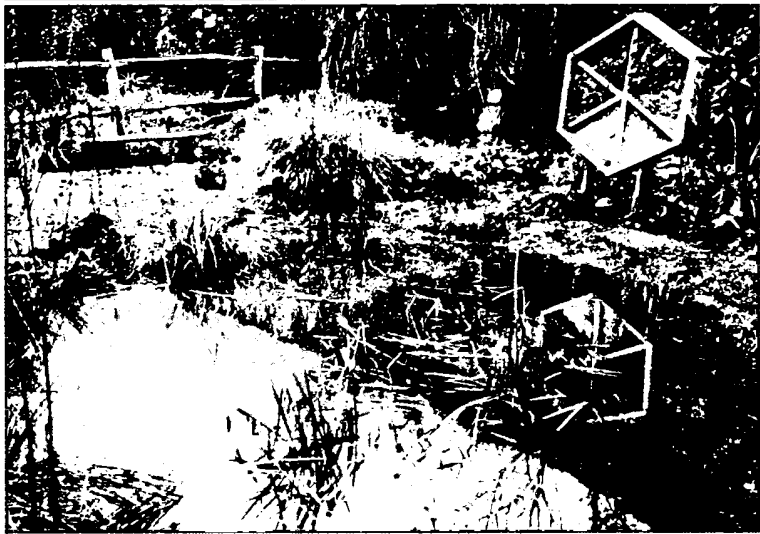
Froglife Ecological Services (FES) has also contributed towards our Transforming Landscapes and has over the past year has worked at 229 covering 27 ha. These contracts provide a double win through benefiting biodiversity and also providing much needed unrestricted funding for the trust.

FES has also worked on several Leapfrog Schools improving school grounds for wildlife, this year we have worked at four schools, we have built new ponds, restored existing ponds and included a wide range of wildlife friendly elements including bug hotels, bird boxes and log piles.

The key donor for our Transforming Landscapes work is National Heritage Lottery Fund (NHLF) and we are enormously grateful to lottery players for supporting this valuable work. We are also grateful to the many other donors that support this work, a total of eighteen other donors have contributed funds to ensure that we can deliver for biodiversity. It goes without saying that without this support we would not have achieved so much.

Global Habitat Statistics 2020/21





TRANSFORMING LIVES

How we did delivering our Key Indicators

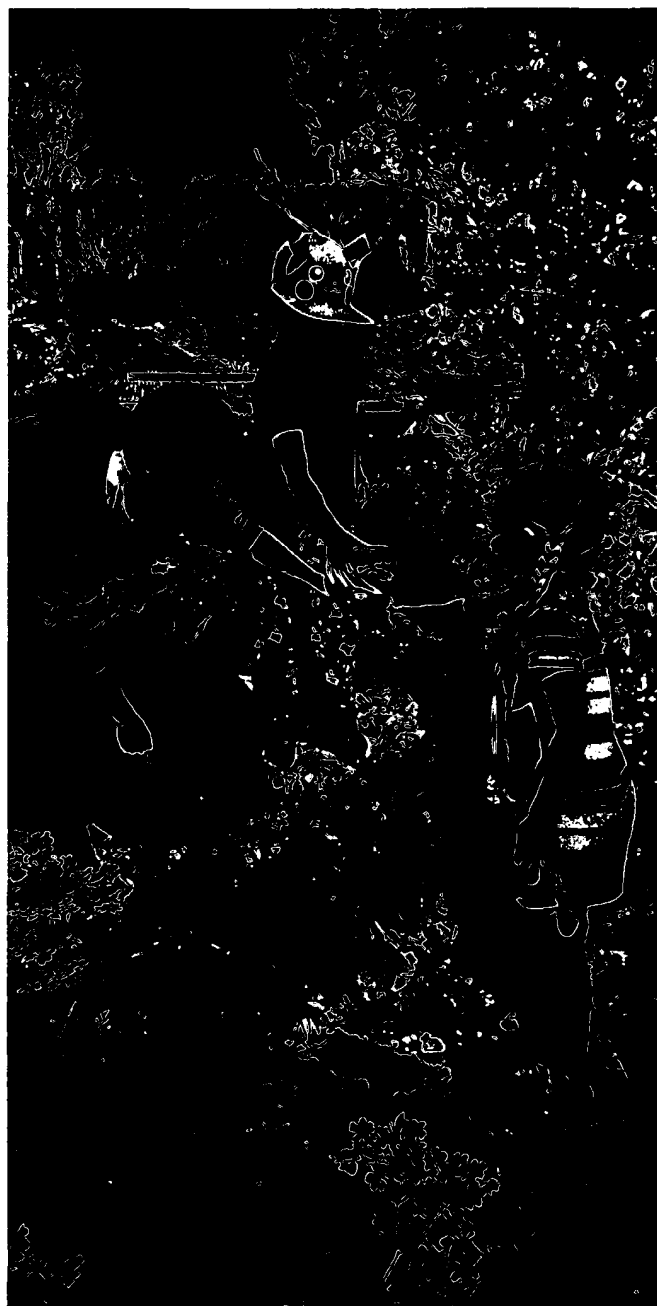
We are reliant on the volunteers that help to support our work, these include those that help on sites, in the back office, attend events, write blogs and articles and support our project in a hybrid of other ways. We are also reliant on the Toads on Roads patrols going out each spring to help save thousands of toads. A huge thank you to every volunteer. Volunteering provides us with much needed additional support which equates to us being able to deliver more on lower budgets. This is a huge financial gain for Froglife. This year we have been supported by 569 volunteers equating to an estimated income of £28,450

This year we have worked directly with 33,045 people, this compares to 15,859 last year when our numbers were severely impacted by the first lock-down.

Our Green Pathways Scheme which is still operating in Peterborough, Northamptonshire, Fenlands and Glasgow has also expanded to Sussex where we have spent this year developing a new project for this region. We have also secured a grant from The Robertson Trust to expand the Glasgow Green Pathways Scheme to other regions. To date we have expanded the project to the wider Glasgow area and are developing the project in Fife and Renfrewshire.

Joe used to work as SENCO Primary school teacher and he was impressed by the session he attended. He literally said: *'Had I been a teacher observing an outdoors classroom lesson given by teachers, I would have rated Briony and Vaughan at least good-to-outstanding. As well as introducing the children to nature and the outdoors, the session was structured so that there were constant learning moments happening across key literacies (communication, language, working collaboratively, basic maths, and science). My overall impression was of children who might not engage with such structured learning in a classroom setting, but clearly did in an outdoor setting.'*

The Green Pathways Scheme has this year directly benefited 2,871 vulnerable and/or disadvantaged young and older people.



Our projects supporting people living with dementia has continued to benefit people living in Glasgow, Somerset and London. This year the projects worked with 557 people living with dementia. Projects have improved sites in all of these areas.

"After Louise's fantastic talks yesterday at our online Girls' Brigade meetings, Lenzie folk are sending me frog pics and phoning me to tell me where to see them! It's a frog frenzy in Lenzie! It was such a fascinating session - Louise is a great asset for your organisation." (Girls Brigade Organiser)

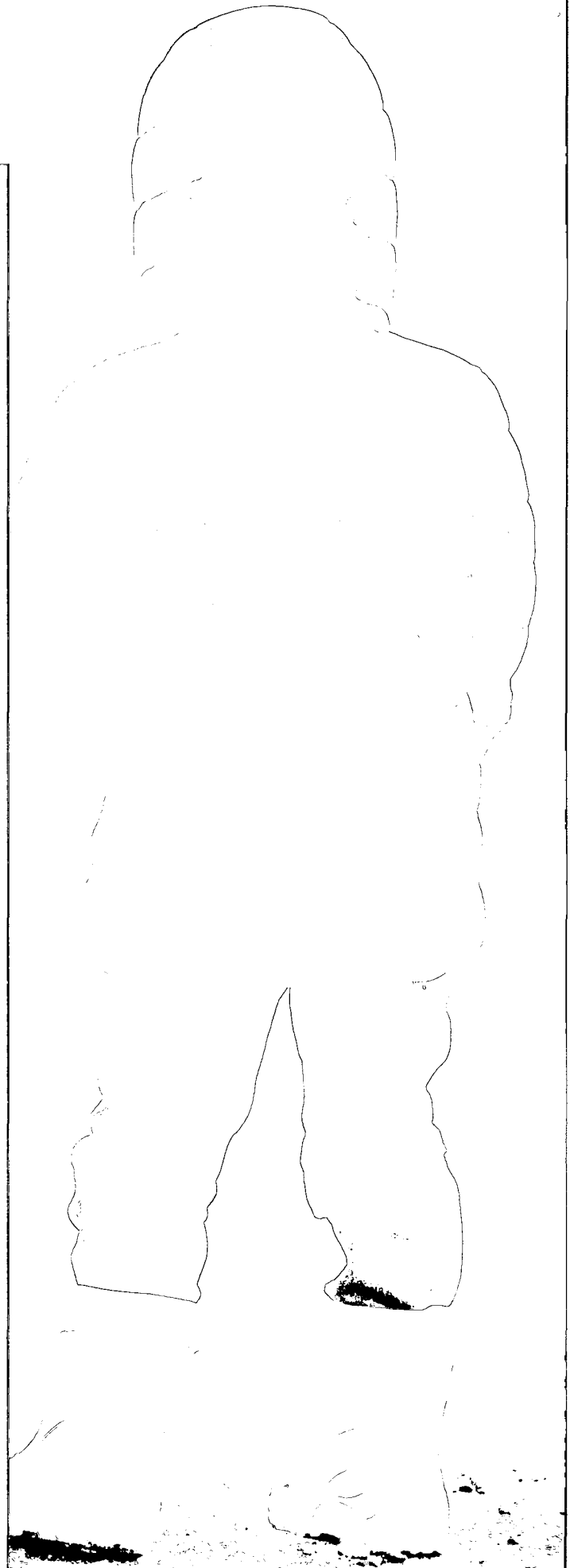
CASE STUDY

The D children were placed into foster care only a few weeks before the initial lockdown last March, moving them from an inner-city environment to a remote country home. The transition for them at first was very challenging, the quiet stillness of the Fens is a huge contrast to the hubbub they were used to. At their old home they had a small unkept garden so the first thing we wanted to do was introduce them to gardening; growing seedlings, nurturing vegetables and maintaining the fruit trees. During that first period of adjustment the garden was the only outlet any of us had. Upon counting at one point we had 26 varieties of food growing much to the amazement of the children and testament to their hard work. Wildlife has also been one of the highlights of their time here, one of the children's first memories was walking along a footpath in the farmers' field next to our house and spotting a herd of 14 small deer, they squealed in excitement. The first time their social worker visited they excitedly reeled off all the wild animals they had seen.

It is hard to imagine how these vulnerable children were able to adapt so quickly after being taken from everything and everyone they knew and be thrust into not only a new life but a new world in how to live. The pandemic cast a giant ominous shadow over the first few months of their placement, not only the fear of what Covid-19 could mean for us all but there were also tears when birthdays could not be celebrated and frustration at being in one place all the time.

Their love of all things outdoors has really developed in the last year and joining the FrogLife course has only strengthened this, they don't even realise they are actually learning because they are having so much fun! From not knowing what a pheasant was to being able to identify a common buzzard perching in his nest the children have become little experts in their own right. The variety of activities at FrogLife has kept the girls constantly engaged and they always cannot wait until their next session and are always on the lookout for newts and toads.

From a practical standpoint Covid-19 has meant that these foster children have had limited to little access to their social worker apart from skype, disrupted school routine, no real leisure activities in an indoor setting, no social/sports clubs or after school clubs, limited interactions with people who are not in our bubble, no access to mental health/therapy practitioners. The most immediate concern was the lack of education as they were not in local schools at the start of lockdown as they are originally from out of the area meaning that one of the girls only had access to an online tutor for 2 whole terms.

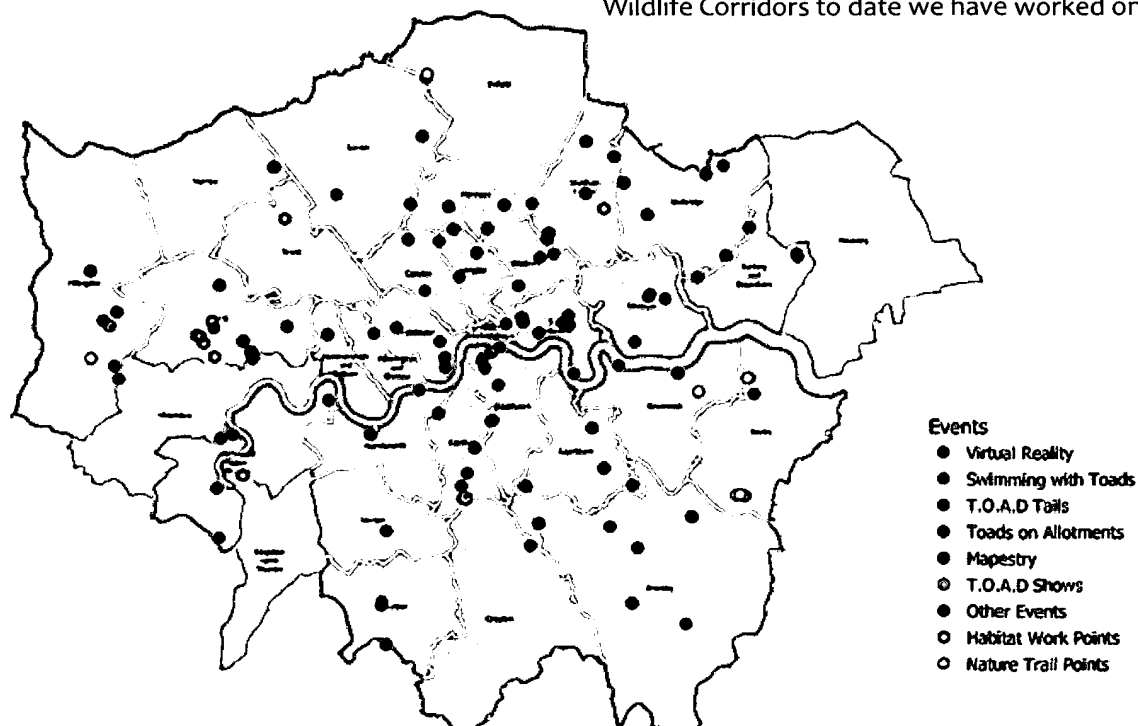


London T.O.A.D has been catching up from the missed sessions during the lock-downs and has delivered numerous activities and hosted several events. The Wildlife Tunnel Exhibition has reached over 300,000 people, this is largely thanks to Transport for London that has provided us with free exhibition spaces at seven of London's busiest stations. The map below shows the spread and impact that the project has had

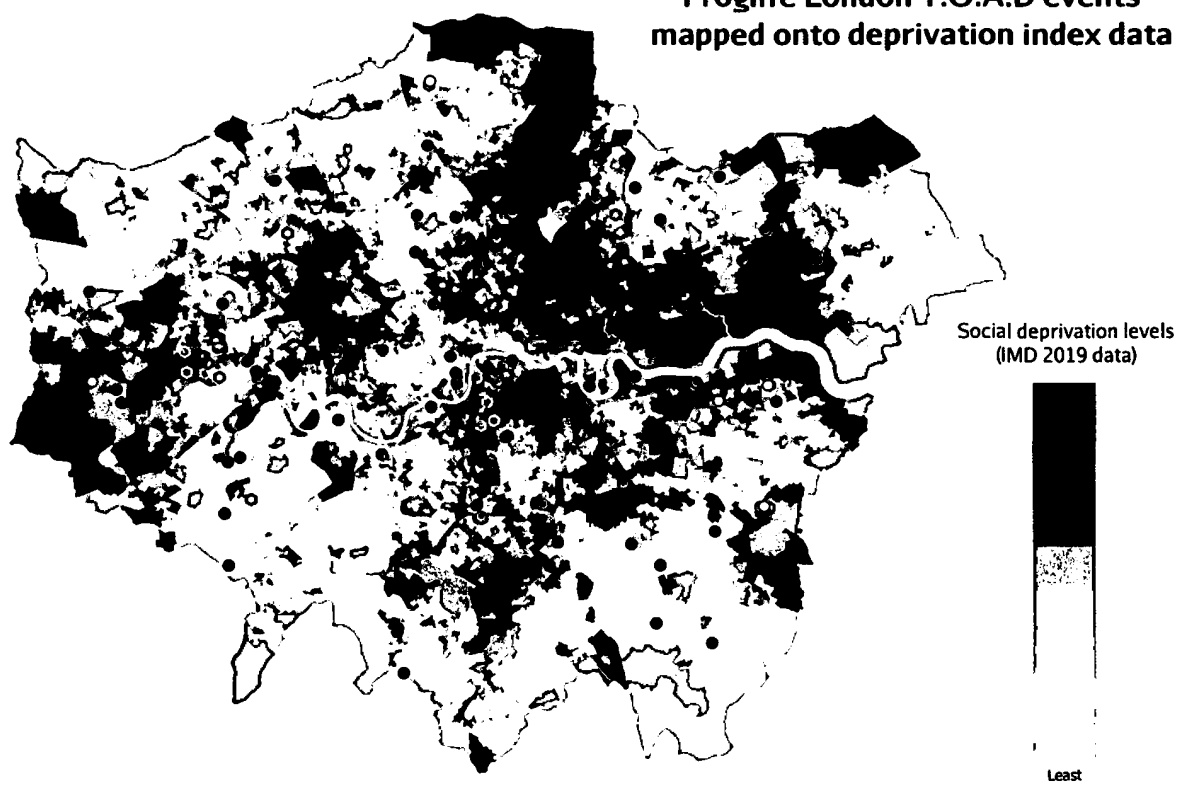
in London. In total communities in 31 London boroughs have taken part in activities.

During the lock-downs the project continued to deliver through on-line sessions which were extremely well attended and helped parents/carers with home schooling.

Come Forth for Wildlife has created Neighbourhood Wildlife Corridors to date we have worked on two



Froglife London T.O.A.D events mapped onto deprivation index data





neighbourhood corridors. In total the project has benefitted 12,611 people living in the Forth region.

"Excellent, clearly presented content. Very informative but not too in depth for a quick online session. Just right! Thank you! Looking forward to making a hibernacula which I'd never heard of"

"Well presented, clear and enthusiastic. I learned a lot about practical things to do both on the allotment and in our garden where we are building a pond"

"Good to learn more about amphibians. Usually wildlife friendly gardening is for pollinators"

Unfortunately the Veterans March Forth for Wildlife did not get off the ground, this is mainly as a result of the pandemic, but other factors did also impact on the project. At the end of July, after several attempts to engage with veterans, we took the decision, with the support of the donor, National Lottery Awards for All, to close the project and refunded the balance of the grant. We have learnt a lot from this project and lessons learnt will be applied to future projects. We have provided Awards for All with a comprehensive report to help to inform their decision making.

Yorkshire Tails of Amphibian Discovery (T.O.A.D) got off to a good start this year. To date it has reached a total of 2,187 people. This is a quick turnaround project that will end on 31st March 2021. We incorporated a new element into this project with us undertaking a toad audit of all toad patrols in the project locations and where identified we are undertaking interventions to improve conditions for toads and patrollers. In addition to the habitat works, toad patrol audits and volunteer training the project will create 5 Neighbourhood Wildlife Corridors, deliver 50 Wildlife Gardening Workshops and 10 Events at sites that have been improved for wildlife.

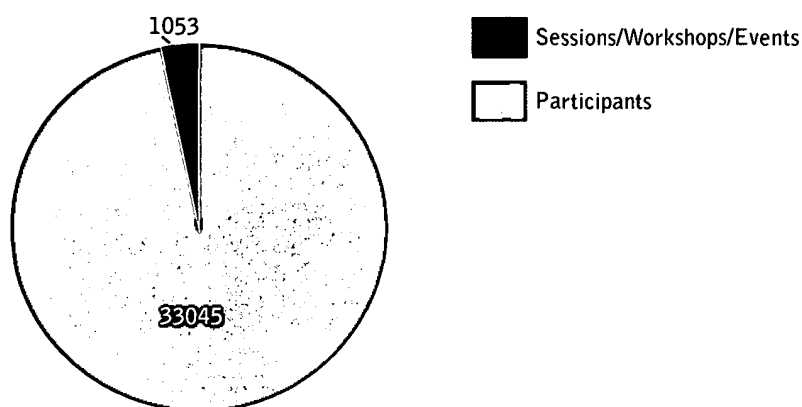
"Great to see the pond created by Mariela in York after our wildlife gardening workshop flourishing. Although only 6 weeks old the pond on her allotment is already home to water boatmen, diving beetles and a frog."

We developed a new project to operate in Peterborough and Fenlands and thanks to a grant from the Warwick and Dominey Fund managed by Cambridgeshire Community Foundation it started to deliver school sessions in July 2021. The project is using a very unique approach to raising awareness amongst school children of the inter-dependence of nature and people. It is promoting healthy eating highlighting the essential role that nature plays in providing us with food, and how nature needs us to provide it with wildlife friendly places.

Our FES Leapfrog Schools programme has provided many schools with outdoor classrooms for teachers and support workers to use to enhance outdoor education for their pupils.

"You helped us to create a pond at our school which attracts lots of frogs. We therefore have lots of frogspawn!" teacher.

Sessions/Workshops/Events & Participants 2021

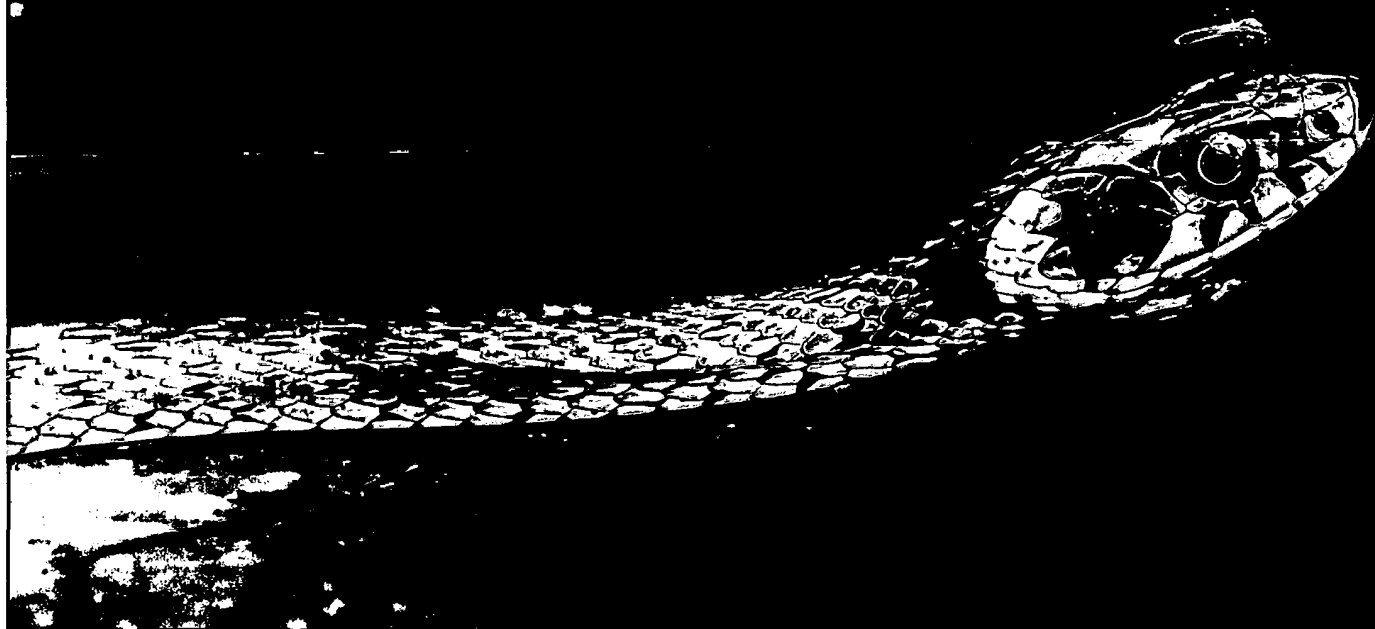


"Thank you so much for yesterday. The Primary 7 teachers said the kids had a ball and really enjoyed it! Thank you for giving them something nice to do in the midst of this hard time! We can't wait to see the finished result! Thanks again!" Gemma Moore, Principal Teacher, Comely Park Primary School

Charlie age 7, New Road Primary after his 1st GPS Session

"I look forward to these sessions each week. I learn something new each time, I didn't know before. I tell my grandson about the things I have learnt" TA, Stamford College

Jess, Teacher at Neale-Wade





TRANSFORMING RESEARCH

Froglife's under the road tunnel mitigation research continued to generate substantial data over the 2020/21 period. We have a significant dataset of amphibian usage of the tunnels and this has greatly enhanced our understanding of amphibian, reptile and other wildlife use of wildlife tunnels. This year we have been monitoring tunnels in Scotland, France and the Netherlands.

We have a NERC CASE PhD studentship in collaboration with the University of West Scotland. The student is examining the impact of salinity on amphibian populations, and will be volunteering on the Come Forth for Wildlife project.

Thanks to a Grants Plus grant from the Esmée Fairbairn Foundation we are collaborating with the Open University (OU) on undertaking research of the impact that our Peterborough Green Pathways Scheme has had on participants. The initial research is comparing data collected from groups participating in Green Pathways sessions with that of control groups that have not taken part. OU will write a journal article about the impact and will work with Froglife staff to assist them in improving the way in which we evaluate our social impact.

The University of Exeter approached Froglife to include our Somerset Green Pathways for Life project in a piece of research they are conducting on service provision for people living with dementia. They have carried out an interview with the project team and will be collecting data from project participants over the autumn.

We are working in partnership with the UK Centre for Ecology and Hydrology (CEH) on their research project modelling the landscape-level benefits and biodiversity consequences of woodland creation. We have shared the data collected by Toads on Roads patrollers to help create a model that will predict where woodlands could be planted to provide the most benefit to toads. This research is also helping us better understand how toad populations are fairing in different areas of the UK following our research published 5 years ago that showed toads were experiencing dramatic declines across the UK.

We contributed to a published paper 'Encouraging the routine testing of management interventions to improve conservation effectiveness'

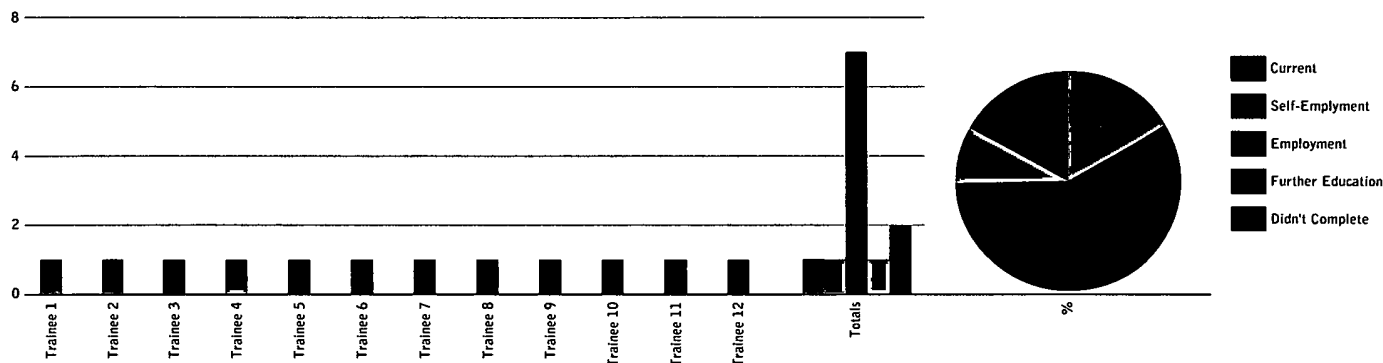
Paul Tinsley-Marshall, Harriet Downey, Gilbert Adum, Nida Al-Fulaij, Nigel A. D. Bourn, Peter N.M. Brotherton, Winifred F. Frick, Mark H. Hancock, Josh Hellon, Michael A. Hudson, Kenny Kortland, Kate Mastro, Catherine M. McNicol, Tom McPherson, Simon Mickleburgh, Christopher P. Nichols, David O'Brien¹⁸, Nancy Ockendon, Stuart Paterson, Catherine J. Payne, Danni Parks, Stuart L. Pimm, Henry Schofield, Ashley T. Simkins, James Watuwa, Kathy Wormald, John Wilkinson, Jeremy D. Wilson, William J. Sutherland

We have continued with a strong partnership working with the Zoological Society of London (ZSL), RSPB and The British Ornithology Trust (BTO) on wildlife garden disease. We act as the public portal for reports of amphibian and reptile diseases and mortality.



TRANSFORMING PEOPLE

Trainee Progression 2021



We are proud of our track record of providing salaried trainee placements. To date we have had 12 one year trainees. All of the new projects that we have in the pipeline include trainee positions and we have developed a project for Peterborough that is focusing exclusively on delivering a salaried training programme for five trainees per year for three years. The project will be ensuring that we increase the diversity of people working within the sector.

opportunity to be out and about again talking to people about our work.

Instead of being out and about giving talks and presentations, like all other organisations we have reverted to on-line. Our staff have given numerous talks arranged by Froglife and also hosted by other organisations. We have also developed a series of online webinars and this year we have delivered 13

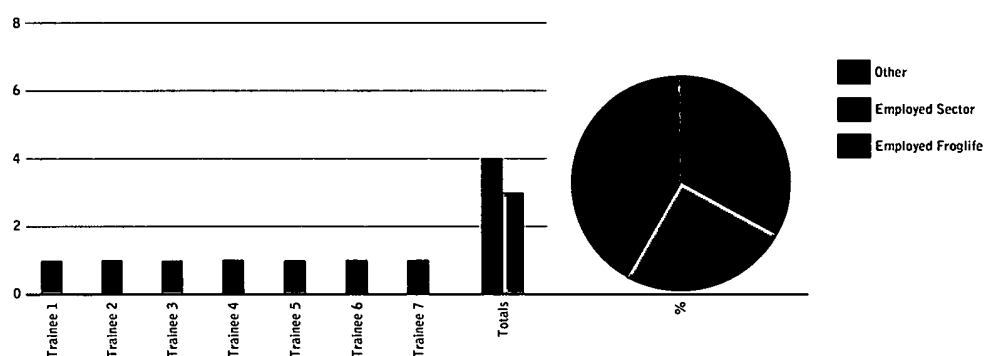
webinars covering wildlife mortality on roads, reptile identification and surveying and habitat management.

We have had some very good media coverage including a piece in the Guardian covering the proposed changes to the Wildlife and Countryside Act (1981) titled "Red squirrels and pine martens could lose protection in UK review, say experts". Another in Country Life "The secret life

of toads, from frenzied procreation to hunting snakes in the night". We also have appeared in several BBC TV and radio interviews to talk about our work.

We have ensured that our website has remained updated and fresh and we are now monitoring its usage far more closely so that we can establish the well and less used pages and ensure that our website visitors can land on the pages that they need and find the information they want.

Trainees Employed Within the Sector 2021

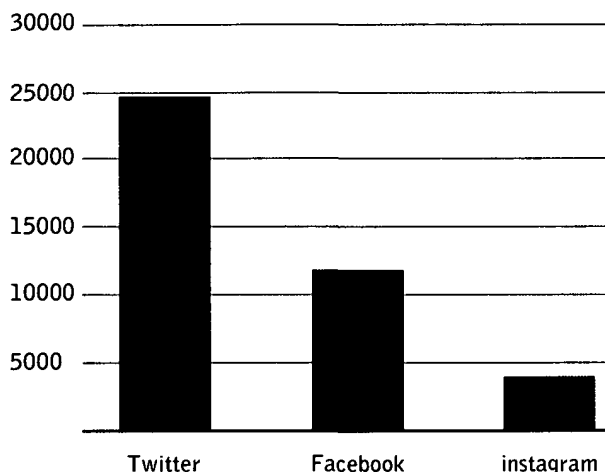


Due to the ongoing pandemic issues we have not had interns or university placements, we have had school work placements which the students have found useful for developing their work experience.

Thanks to our patron Kate Bradbury we had a stand at the Hampton Flower Show, over the week we met and spoke to thousands of people about how to manage their gardens, allotments and other sites for wildlife. As the pandemic has stopped Froglife hosting large-scale public events or attending externally hosted events it was fantastic for our staff to be given the

Our social media followers has continued to climb. This year we started to use Instagram which is proving very popular.

Social Media



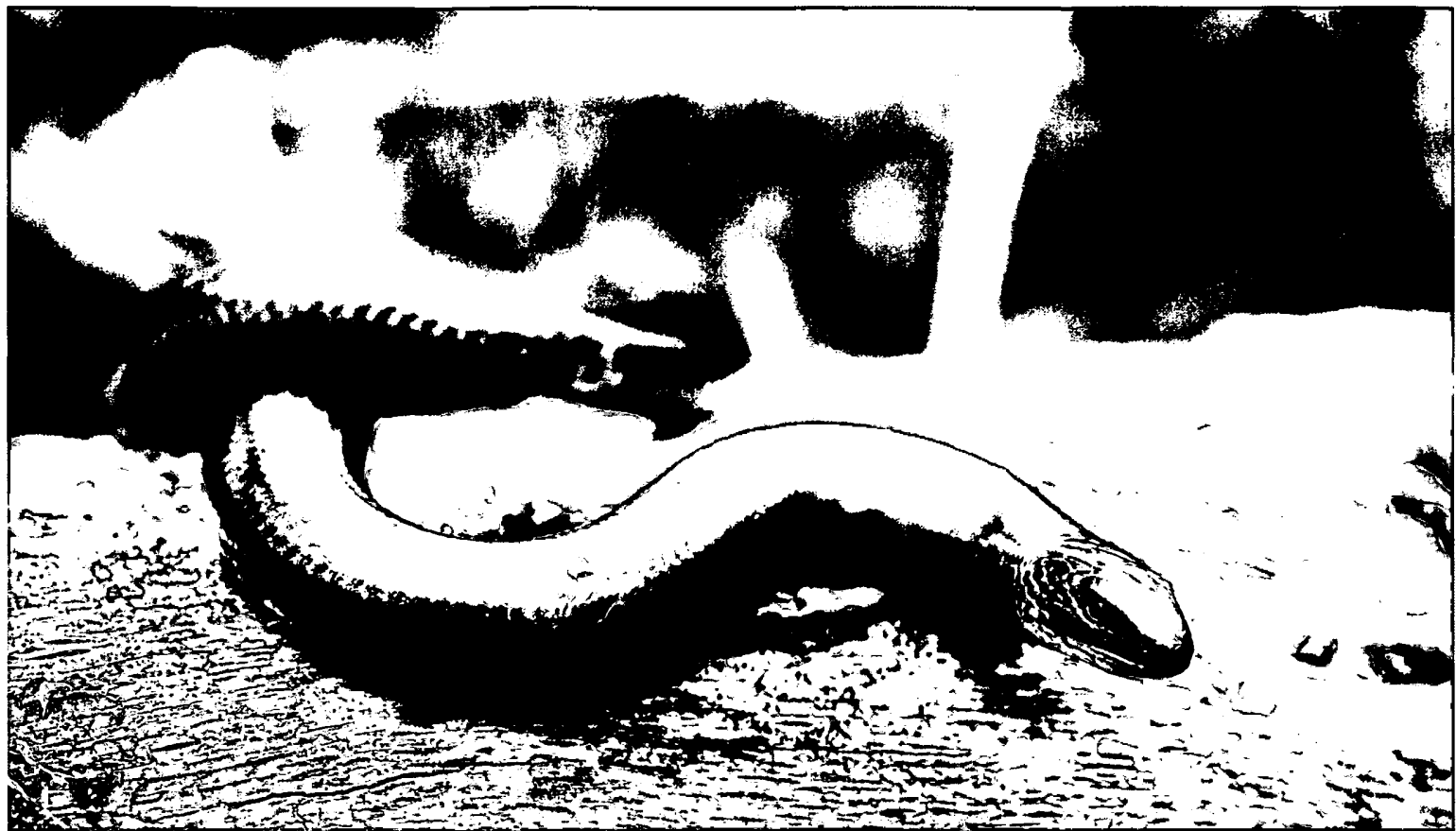
The email enquiry service has continued to be busy and interesting. Our responses quite often prompt donations which is always a nice way to be appreciated and of course helps with our finances. Generally donations, sponsorships, friendships and Corporate Supporters has continued to grow, we now have the most Corporate Supporters we have ever had. Although donations have risen it is disappointing to see our friendships decline year-on-year. In order to try to address this and to ensure that our message is on key for friends, this year we did a survey with our friends by either phone calls or email. It proved very interesting and we learnt a lot about the people who support our work on annual basis.

Comments:

- Many brought up to love wildlife
- Many had ponds during their childhood
- Many have ponds
- Love of amphibians
- Some love of reptiles
- Landscape Gardener concerned with how sterile gardens have become
- No evidence but most sounded fairly wealthy through general comments.
- Many single people
- Articles too scientific/academic (2x people).
- Articles too long.
- Want to do more to help such as volunteer etc.

The Friends Survey results:

Age Range	
20-30	7.14%
30-40	14.29%
40-50	21.43%
50-60	21.43%
60-70	21.43%
70-80	14.29%
Why they support Froglife	
Transforming Landscapes	100%
Transforming Lives	0%
Transforming Research	0%
What encouraged them to support Froglife (tipping point)	
Conservation/amphibians/reptiles	71.43%
Website search	7.14%
Enquiry	14.29%
Toad Patroller	7.14%
Do they support other nature conservation organisations	
Yes many	50%
Yes some	28.57%
No	21.43%
Interests	
Nature conservation	71.43%
Gardening	7.14%
Non-related	21.43%
Profession	
Business/corporate	42.86%
NGO	7.14%
Teaching/Support Workers	28.57%
Retired	21.43%
Do we keep in touch sufficiently	
Yes	78.57%
No	21.43%
Do you find the information we send useful/interesting (e-newsletter & Natterchat)	
Yes	78.57%
No	21.43%

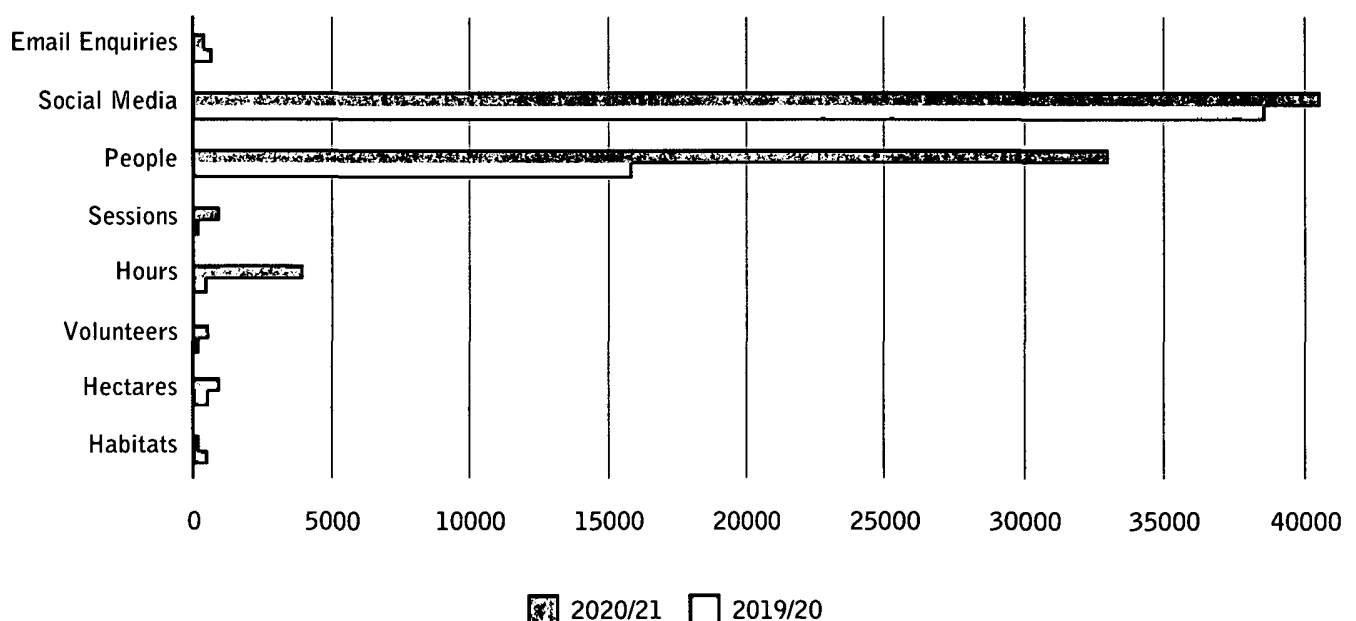


As a result of this survey we decided to develop more connections with our Friends by running a webinar programme, with topics on amphibians, reptiles, pond creation and wildlife gardening. Friends can access these for free and other members of the public pay a small fee. This provides a useful 'thank you' to our Friends plus core income for Froglife.

Our Board of Trustees, who are extremely dedicated to the charity, have continued to put in additional time to support the CEO during the pandemic.

We would like to acknowledge the valuable work of all of our trustees, volunteers and staff. We particularly also want to thank the back office staff, they are predominantly out of sight, but without their ongoing work dealing with administration, financial matters and communications we would certainly not have had the enormous achievements we have enjoyed this year. Their efforts have helped us to conserve more reptiles, amphibians and their habitats.

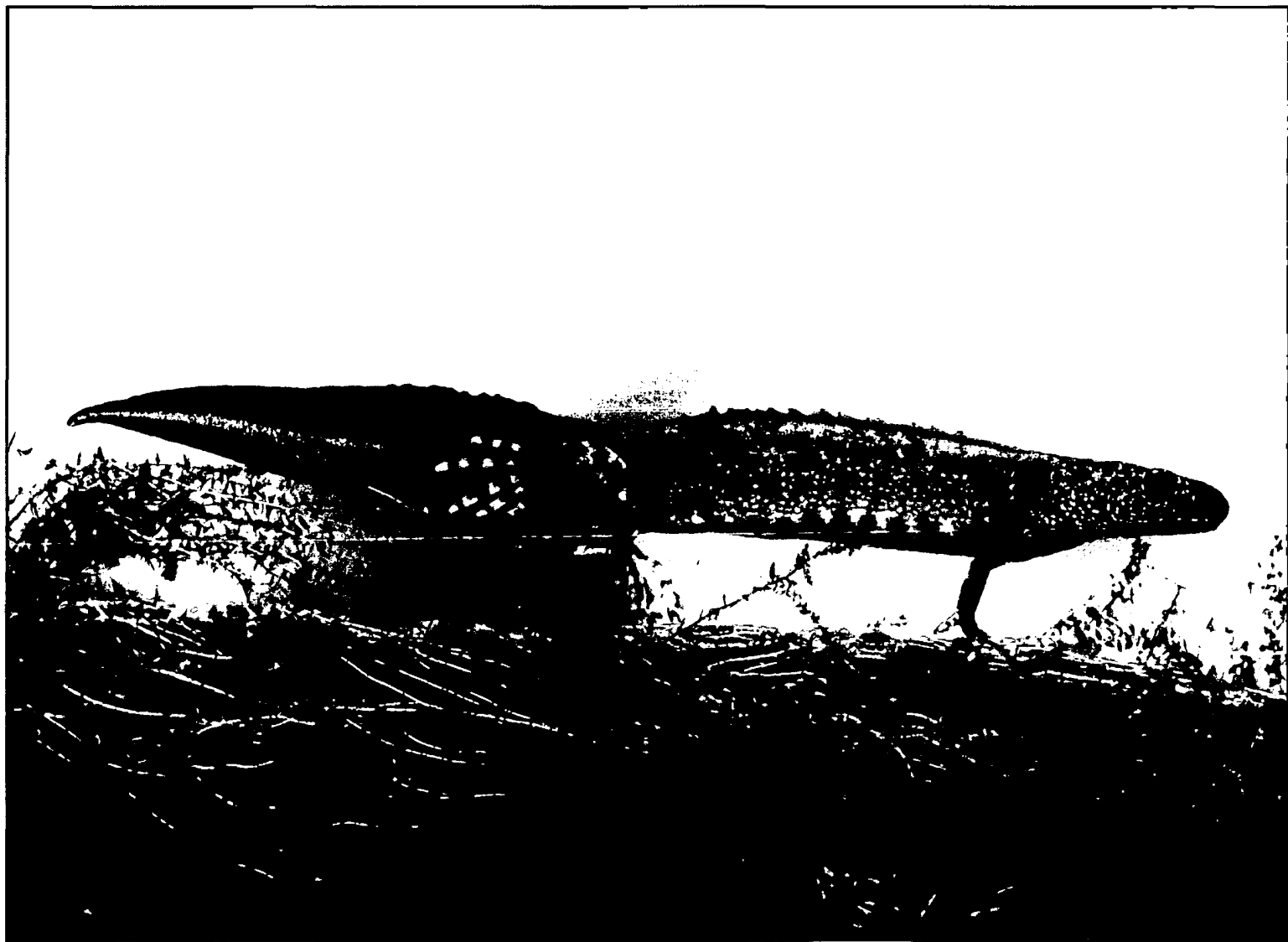
Global Statistics Comparing 2019/20 to 2020/21



TRANSFORMING FROGLIFE ECOLOGICAL SERVICES (FES)

FES is back on course after a tricky pandemic year. FES has been finishing off sites as part of the London T.O.A.D. project. It has been working in the Forth Valley undertaking habitats works as part of Come Forth for Wildlife and has started work on the Yorkshire T.O.A.D. sites which will be completed in March 2022. The training programme was back up and running this year and delivered a mammoth amount of training courses with higher numbers than ever in the past. FES has worked on several Leapfrog School sites and has delivered numerous private contracts. FES is now managing the Eye Green and Boardwalks Nature Reserves and will manage grants that will be secured for habitat works at these two reserves.

FES
Froglife Ecological Services



TRANSFORMING OUR FUTURE

We have several new projects in the pipeline all of which of course require funding but so far we have had positive input from donors.

Yorkshire: Coalface to Wildspace – working in former Yorkshire coal mining areas to transform coalfaces to wild spaces and engaging the local communities in a range of activities.

Peterborough: Transforming Lives: Froglife Trainees – embracing diversity in the sector by offering five salaried trainees per year to join Froglife’s trainee programme and gain on-the-ground, hands on conservation experience.

London: London Blue Chain – creating blue spaces along the London Green Chain walk and engaging local communities that live along this corridor to get involved in wildlife conservation in their local neighbourhood.

Sussex: Green Pathways Scheme – after the development phase entering into the full delivery phase of a five year Green Pathways Scheme in Sussex.

We have some projects that we have struggled to raise funds for, but because we believe these are good

projects that will yield great benefits for reptiles and amphibians we will keep trying to secure funding:

Cambridgeshire: Thorp Lacu – working in ten Cambridgeshire villages to make their village ponds biodiverse. Ponds in villages have suffered enormous declines with many villages now only having the one village pond. Unfortunately although many of these ponds look aesthetically pleasing they lack diversity of species and are not functioning for biodiversity. This project will enhance these ponds, and promote the historical heritage value of these ponds, many of which were initially created to meet human needs.

Fife: Fife Living Water (Cowdenbeath) – this project will be restoring a non-functioning wetland site through undertaking extensive habitat restoration and creation work and opening up the site so it can once again be enjoyed by the local community. The project will also be working on another site in Cowdenbeath, Swan Pond to provide more habitat mosaic through creating wetland scrapes. In order to address concern of a lack of connectivity between the two sites we will work with the local community on creating a wildlife corridor through Cowdenbeath connecting Swan Pond to Cowdenbeath Wetland.

RISK MANAGEMENT AND INTERNAL CONTROLS

The board of trustees have overall responsibility for the system of internal controls for Froglife and its subsidiary which include ensuring that there are procedures in place for the prevention and detection of fraud and other irregularities. However, such a system can only provide reasonable, but not absolute assurance against errors and fraud.

The charity operates a comprehensive annual planning and budgeting process, which is approved by the board. Performance is monitored through the use of activity and financial targets. Reports are made to the board which compare the actual results against activity targets and against phased budget which link to financial performance with resource and activity levels.

Internal controls are subject to scrutiny by the charity’s Senior Management Team and Finance Team which carry out a programme of cyclical reviews.

The charity has risk management policies and procedures through which risks arising from existing operations and strategic developments are identified and evaluated. Managers are required to identify and analyse risk relevant to their scope of activity, assess them accordingly to the impact on the charity and the likelihood of occurrence; and report on the procedures which are in place, or are being developed or enhanced, to provide assurance that the risk is being monitored. The Risk Register was updated in 2020 to reflect the risks posed by the pandemic with an analysis of impact and the action that the charity is taking to minimise these risks, this is under continual review and updated in line with the latest Government Guidance.

The Risk Register as at September 2021:

Risk	Level	Actions	Revised Level
Human Resources			
Loss of key staff	Medium		Low
	Medium		Low
	Medium		Low
	Medium		Low
Stress Management	Medium	Ensure staff are well supported and have regular 1-2-1s with line managers. Ensure staff are aware that they can raise concerns and that these will be dealt with efficiently in an appropriate manner. Staff suffering from severe stress will be provided with additional support which may include external support and/or medical advice.	Medium
Long-term illness	Medium		Low
Coronavirus	Medium	Any symptoms and staff to self-isolate and seek medical advice. Staff not to go to offices if they have flu like symptoms. Staff to immediately notify their line manager who will discuss with the CEO	Medium
	Medium	Returning to offices: put in place stringent health & safety measures such as regular cleaning of all surfaces; safe distancing measures etc.	Medium

Risk	Level	Actions	Revised Level
	Medium		Low
Emerging Diseases	Medium	Follow all government/National Health guidance. Constant monitoring of the situation as events happen and guidance changes. Allocate one member of the SMT to be in charge of providing staff with up to date guidance etc.	Medium
Repeated stress injury (RSI) & other similar issues	High	Staff who are using computers on a regular daily basis for long periods of time will be encouraged to take regular breaks. Staff who are experiencing RSI or other similar issues will be encouraged to report these to their line manager and appropriate action will be taken such as the purchase of equipment to reduce the stress.	Medium
Lack of compliance/ knowledge of employment law	Low	Ensure that those responsible for HR keep abreast of new legislation, employment rights etc. We currently seek professional advice when in doubt (ACAS/Trust Law/HMRC). Ensure that staff handbook is updated with new legislation and that Line Managers are made aware of changes to legislation and impact on Froglife procedures and policies; Ensure that all staff read the staff handbook and refer to it when they need to.	Low
Demotivated staff	Low		Low
Conflict	Low		Low
Other offices feeling isolated	Low		Low
Staff feeling isolated	Medium		Low
Volunteers not feeling part of Froglife	Medium		Low

Risk	Level	Actions	Revised Level
Remote Working	Medium		Low
Financial Management			
Unrestricted funding	Medium	Keep marketing FES and expanding its remit; Keep looking for every opportunity to raise unrestricted funding through merchandise, corporate sponsorship, friends, donations, major donors; Ensure that all projects are contributing as much as they can; All staff and trustees are aware of a responsibility to assist with unrestricted fundraising.	Medium
Cashflow	Medium	Ensure that grant claims are submitted regularly and on time; Ensure that as much expenditure as possible is put through legitimate project expenditure categories; Ensure that grant claims are accurate so that they are paid promptly; Wherever possible try to secure front end loaded funding; Monitor cashflow on a regular basis and stage payments in accordance with income and cash flow pressure.	Medium
Investment Policy	Low		Low
Under-funded projects	Medium		Low
Accountancy procedures	Medium	Strong financial procedures in place and adhered to; Regular spot checks to ensure that the procedures are being adhered to. Ensure that a reputable accountancy firm is looking after our financial affairs. Pay for financial advice from relevant experts when needed.	Medium
Fraud etc	Low		Low
Trustees			
Knowledge, support, numbers	Low		Low
Professional Services			
Accountants, Solicitors etc	Low		Low

Risk	Level	Actions	Revised Level
Consultants	Medium		Low
Contractors	Medium	Provision of Services Contract written by a solicitor with expertise in this field is in place. All Project Managers are responsible for ensuring that contracts are signed prior to work commencing. All contracts are sent to the CEO for final approval & are filed in a central database	Medium
Reputational Damage			
Inappropriate behaviour by trustees/staff/volunteers	Low		Low
Sites			
HNR & Boardwalks Financial/Reputation/ Long-term	Medium	HNR no longer in favourable status - high reputational risk. Have carried out substantial work at Boardwalks but risk that the council will hand-over management to Nene Park Trust.	Medium
Reputational risk associated with not managing the reserve	Medium		Low
Site Acquisition			
Finances etc	Low	Froglife would not decide to acquire sites unless a full audit has been carried out which will include looking into all aspects of site management including financial hence this is a very low risk	Medium
Projects			
Child Protection and Vulnerable Adults	Medium	Ensure that all staff are working to Froglife's procedures and policies regarding this matter; All incidents to be reported immediately to the CEO as the person responsible for Child Protection and Vulnerable Adults and appropriate action to be taken immediately	Medium
Staff being endangered	Low		Low
Partnerships	Low		Low

Risk	Level	Actions	Revised Level
Contractors	Medium	Obtain three quotes for all substantial work; Ensure that the contract is comprehensive covering all relevant areas of work/specification/payments/timeframe etc. For new contractors obtain references and previous work register/view previous work; Ensure that all contractors are fully insured and have provided copy of their insurance; Ensure that equipment used by contractors is maintained/roadworthy; Ensure that contractor staff are appropriately trained; Ensure that contractors are supervised by Froglife staff; Ensure that contractors sign the Provision of Services Agreements	Medium
Data Protection	Medium	Ensure that all staff are aware and complying with GDPR & Froglife data protection procedures; Regularly remind staff and update data protection with new legislation etc.	Medium
Events			
Reputational risks: advice/failure etc	Low		Low
Press			
Incorrect/Misrepresentation/incredible stories etc	Low		Low
Website			
Inappropriate info/sabotage etc	Low	Procedures in place to reduce risks, vigilant monitoring of website and data input etc	Medium
IT Security			
IT Consultant	Medium	IT Consultant no longer manages our IT systems for whatever reason. We are highly dependent on the consultant at the moment. We are training up another member of staff to gain a greater understanding of our IT systems.	Medium
Data protection: Server/Cloud etc	Medium	IT Consultant keeps abreast of IT risks and ensures that we are properly protected against cyber attacks etc. Stringent procedures in place to detect cyber/spam attacks. Constantly monitored & updated. Thorough evaluation of the benefits of moving to Cloud has been undertaken. All staff are aware of the protocols around protecting passwords and data this becomes even more relevant because of the direct access the cloud affords to our data. Once we have moved to cloud all staff will be instructed on the potential dangers/issues and how to minimise these.	Medium
Email: Inappropriate/incorrect/poorly phrased etc	Low		Low

Risk	Level	Actions	Revised Level
Social Media: Inappropriate/ incorrect/poorly phrased etc	Low		Low
Publications			
Mistakes/incorrect etc	Low		Low
Fundraising			
Fundraising Standards & guidance	Low		Low
Funders: Overlooked for acknowledgement/ poor representation etc	Low		Low
Inappropriate funding	Low		Low
Charity Commission			
Failure to report any major issues	Low		Low
Brexit			
Brexit generally	Medium	Refer to Jan 19 minutes of SMT meeting for strategy	Medium
Brexit supplies	Medium	Difficulty obtaining supplies/materials	Medium
Froglife Ecology Centre	High		Low
Froglife Ecological Services (FES)			
Great Crested Newt License	Low		Low
Training courses	Low		Low
Supplies/materials	High	Unable to obtain supplies/materials	High
Legal	Low		Low
Reputation	Medium		Low
Financial	Medium	The Trust not to become too dependent on the Ltd Company for funding - Ltd Company income to be used to build up a reserve fund and for 'luxury' 'hard to fund' expenditure and as far as possible not used to cover staff costs etc.	Medium

FINANCIAL REVIEW

The financial statements include the results of both The Froglife Trust and its trading subsidiary Froglife Ltd t/a Froglife Ecological Services (FES) for the 12 months period ending 30th September 2021.

Significant events that have affected the financial performance and the financial position of Froglife during the period are:

Froglife is in receipt of some central and local government funding namely Green Recovery Fund managed by the National Lottery Heritage Fund (NLHF), Grow Back Greener managed by the office of the Mayor of London, funding from Fenland and Somerset Councils and the completion of the Biodiversity Challenge Fund grant managed by Natural Scotland. We have also received funding through the Conservation Environmental Scheme (CES) to undertake habitat works at Hampton Nature Reserve, this scheme is managed by Peterborough City Council. This year we entered into a fifteen year Licence to Occupy for Eye Green Nature Reserve and Peterborough City Council is providing funding to manage this reserve.

Froglife has a diverse range of income streams and enjoys the support of a wide range of grant making organisations. Most of this funding is for direct project delivery, however we are very appreciative of the unrestricted grant that we receive from the Esmée Fairbairn Foundation and to donors who provide a Full Cost Recovery element in their grants. Froglife is very reliant on FES to provide unrestricted funds in the form of gift-aided profits to the charity. These funds help to support the core functions of the charity.

Impact of the pandemic

As reported in the last Annual Review we were fortunate that Froglife's finances were in a strong position, this coupled with the support of donors and the furlough scheme helped us to weather the initial lock-down. Subsequent lock-downs with projects not being able to deliver has meant that we have had to extend most of our project work. Donors have been very supportive and have approved project extensions, however these extensions have to be funded from our unrestricted funds, which is putting pressure on our reserves position. We have continued to work to address this and currently have a relatively healthy cash-flow meaning that Froglife is viable for the foreseeable future.

During the first lock-down we developed a range of digital activities and these put us in good stead for the other lock-downs when we returned to on-line delivery. We are pleased to report that all of our projects are now back out delivering in person something that is making our staff and beneficiaries very happy.

Our largest donor has continued to be NLHF who are supporting several of our projects. This year we expanded into Yorkshire thanks to a Green Recovery Grant managed by NLHF. The Yorkshire Tails of Amphibian Discovery (T.O.A.D) is a one year project ending in March 2022. This means that the staff are incredibly busy with all the habitat work taking place over this autumn/winter alongside an extensive programme of public engagement. We have completed the development phase of the Sussex Green Pathways and in September 2021 we submitted our main application to The National Lottery (TNL) Reaching Communities fund for a five year grant.

Unfortunately our application to BBC Children in Need (BBC CiN) for our Peterborough Green Pathways Scheme was not awarded for 2022 onwards. We have been delivering this project, thanks to the BBC CiN for twelve years and it is with a heavy heart that we will be closing this project in March 2022. We did secure a grant from Cambridge Community Foundation, Warwick and Dominey Fund, to start a new project in Cambridgeshire, Nature & Nourishment. We are using this funding to trial the project and then hopefully raise further funding to expand the project.

Grant making organisations have reported a large increase in the number of applications that they are receiving for funding. We think that this will be a result of organisations trying to recover from the impact on their finances as a result of the pandemic. Coupled with the loss of EU and other funding as a result of BREXIT meaning that organisations that were in receipt of overseas funding are now seeking to replace this with grants from UK grant makers. With such intensive competition for funding donors are seeking greater reassurance of evidence of impact and long-term sustainability of projects/organisations. A lot more time is being required when developing funding applications.

Consolidated income for 12 months is £1,010,091. This is £17,992 down on the previous year mainly due to delayed grant claims as a result of the pandemic.

NLHF grants equates to £443,551.

Income breakdown	
Donations & legacies	£53,370
Grants	£771,561
Charitable activities	£52,569
Income from other trading activities	
Coronavirus Job Retention Scheme	£37,309
Other Income	£17,137
Commercial Trading	£77,703
Investments	£442

Expenditure breakdown

Raising funds	£62,807
Charitable activities	£902,291

Charitable activities further breakdown

Conservation of reptiles and amphibians	£555,924
Education & Training	£331,228
Information & Awareness	£15,139

Unrestricted reserves position is £394,071, which equates to 14 months.

Restricted reserves of £159,907

CORPORATE SPONSORS

We are pleased to have been supported by the following Corporate Sponsors this year:

Big Domain
Campsites Uk
DealsQueen
Environmenjob.co.uk

Ethical State
Evergreen Insurance
HolidayCottages.co.uk
Homegrown Timber
Puddleplants
SESI
Stay In Cornwall
Waterside Nursery



STATEMENT OF TRUSTEES' RESPONSIBILITIES

The trustees (who are also directors of The Froglife Trust for the purposes of company law) are responsible for preparing the Trustees' Annual Report and the financial statements in accordance with the applicable law and United Kingdom Accounting Standards (United Kingdom Generally Accepted Accounting Practices).

Company law require the trustees to prepare the financial statements for each financial year, which give a true and fair view of the state of affairs of the charitable company and its subsidiary and of the incoming resources and application of resources, including the income and expenditure, of the charitable company and its subsidiary for that period in preparing these financial statements, the trustees are responsible to:

- Select suitable accounting policies and then apply them consistently.
- Observe the methods and principles in the SORP 2015 (FRS 102).
- Make judgements and estimates that are reasonable and prudent.
- State whether application UK Accounting Standards have been followed, subject to any material departure disclosed and explained in the financial statements.
- Prepare the financial statements on the going concern basis unless it is inappropriate to presume that the charitable company will continue in operation.

The trustees are responsible for keeping adequate accounting records that disclose with reasonable accuracy at any time the financial position of the charitable company and enable them to ensure that the financial statements comply with the Companies Act 2006, the Charities and Trustees investment (Scotland) Act 2005 and the Charities Accounts (Scotland) Regulations 2006 (as amended). They are also responsible for safeguarding the assets of the charitable company and hence for taking reasonable steps for the prevention and detection of fraud and other irregularities.

The trustees are responsible for the maintenance and integrity of the corporate and financial information included on the charitable company's website.

Legislation in the United Kingdom governing the preparation and dissemination of financial statements may differ from legislation in other jurisdictions.

Disclosure of information to the auditors

In so far as the trustees are aware:

- There is no relevant audit information of which the Trust's auditors is unaware; and
- The trustees have taken all steps that they ought to have taken to make themselves aware of any relevant audit information and to establish that the auditor is aware of that information.

Auditors

A resolution proposing that Saffery Champness Chartered Accountants be appointed as auditors of the group will be put to the Annual General Meeting.

This report, which has been prepared in accordance with the special provisions relating to companies subject to small companies regime within Part 15 of the Companies Act 2006.

This report has been approved by the Board on 16th December 2021 and signed on its behalf by Inez Smith (Chair).



Opinion

We have audited the financial statements of The Froglife Trust (the 'parent charitable company') and its subsidiaries (the 'group') for the year ended 30 September 2021 which comprise the consolidated profit and loss accounts, the consolidated and company balance sheets and the cashflow statement and notes to the financial statements, including significant accounting policies. The financial reporting framework that has been applied in their preparation is applicable law and United Kingdom Accounting Standards, including Financial Reporting Standard 102, the Financial Reporting Standard applicable in the UK and Republic of Ireland (United Kingdom Generally Accepted Accounting Practice).

In our opinion the financial statements:

- give a true and fair view of the state of the affairs of the group and the parent charitable company as at 30 September 2021 and of the group's incoming resources and application of resources, including its income and expenditure, for the year then ended;
- have been properly prepared in accordance with United Kingdom Generally Accepted Accounting Practice; and
- have been prepared in accordance with the requirements of the Companies Act 2006, the Charities and Trustee Investment (Scotland) Act 2005 and regulations 6 and 8 of the Charities Accounts (Scotland) Regulations 2006 (as amended).

Basis of opinion

We conducted our audit in accordance with International Standards on Auditing (UK) (ISAs (UK)) and applicable law. Our responsibilities under those standards are further described in the Auditor's responsibilities for the audit of the financial statements section of our report. We are independent of the group and parent charitable company in accordance with the ethical requirements that are relevant to our audit of the financial statements in the UK, including the FRC's Ethical Standard, and we have fulfilled our other ethical responsibilities in accordance with these requirements. We believe that the audit evidence we have obtained is sufficient and appropriate to provide a basis for our opinion.

Conclusions relating to going concern

In auditing the financial statements, we have concluded that the trustees' use of the going concern basis of accounting in the preparation of the financial statements is appropriate.

Based on the work we have performed, we have not identified any material uncertainties relating to events or conditions that, individually or collectively, may cast significant doubt on the group or the parent charitable company's ability to continue as a going concern for a period of at least twelve months from when the financial statements are authorised for issue.

Our responsibilities and the responsibilities of the trustees with respect to going concern are described in the relevant sections of this report.

Other information

The trustees are responsible for the other information. The other information comprises the information included in the annual report, other than the financial statements and our auditor's report thereon. Our opinion on the financial statements does not cover the other information and, except to the extent otherwise explicitly stated in our report, we do not express any form of assurance conclusion thereon.

Other information (continued)

Our responsibility is to read the other information and, in doing so, consider whether the other information is materially inconsistent with the financial statements or our knowledge obtained in the course of the audit or otherwise appears to be materially misstated. If we identify such material inconsistencies or apparent material misstatements, we are required to determine whether this gives rise to a material misstatement in the financial statements themselves. If, based on the work we have performed, we conclude that there is a material misstatement of this other information; we are required to report that fact.

We have nothing to report in this regard.

Other matters prescribed by the Companies Act 2006

In our opinion, based on the work undertaken in the course of the audit:

- the information given in the Trustees' Annual Report which includes the Trustees' Report for the financial year for which the financial statements are prepared is consistent with the financial statements; and
- the Trustees' Annual Report which includes the Trustees' Report has been prepared in accordance with applicable legal requirements.

Matters on which we are required to report by exception

In the light of the knowledge and understanding of the group and parent charitable company and their environment obtained in the course of the audit, we have not identified material misstatements in the Trustees' Annual Report.

We have nothing to report in respect of the following matters where the Companies Act 2006 and the Charities Accounts (Scotland) Regulations 2006 (as amended) require us to report to you if, in our opinion:

- adequate accounting records have not been kept by the parent charitable company, or returns adequate for our audit have not been received from branches not visited by us; or
- the parent charitable company's financial statements are not in agreement with the accounting records and returns; or
- certain disclosures of trustees' remuneration specified by law are not made; or
- we have not received all the information and explanations we require for our audit.

Responsibilities of trustees

As explained more fully in the Statement of Trustees' Responsibilities set out on page 33, the trustees (who are also the directors of the parent charitable company for the purposes of company law) are responsible for the preparation of the financial statements and for being satisfied that they give a true and fair view, and for such internal control as the trustees determine is necessary to enable the preparation of the financial statements that are free from material misstatement, whether due to fraud or error.

In preparing the financial statements, the trustees are responsible for assessing the group and the parent charitable company's ability to continue as a going concern, disclosing, as applicable, matters related to going concern and using the going concern basis of accounting unless the trustees either intend to liquidate the group or the parent charitable company or to cease operations, or have no realistic alternative but to do so.

Auditor's responsibilities for the audit of the financial statements

We have been appointed as auditors under the Companies Act 2006 and under the Charities and Trustee Investment (Scotland) Act 2005 and report in accordance with regulations made under those Acts.

Auditor's responsibilities for the audit of the financial statements (continued)

Our objectives are to obtain reasonable assurance about whether the group and parent financial statements as a whole are free from material misstatement, whether due to fraud or error, and to issue an auditor's report that includes our opinion. Reasonable assurance is a high level of assurance, but is not a guarantee that an audit conducted in accordance with ISAs (UK) will always detect a material misstatement when it exists. Misstatements can arise from fraud or error and are considered material if, individually or in the aggregate, they could reasonably be expected to influence the economic decisions of users taken on the basis of these financial statements.

Irregularities, including fraud, are instances of non-compliance with laws and regulations. We design procedures in line with our responsibilities, outlined above, to detect material misstatements in respect of irregularities, including fraud. The specific procedures for this engagement and the extent to which these are capable of detecting irregularities, including fraud are detailed below.

Identifying and assessing risks related to irregularities:

We assessed the susceptibility of the group and parent charitable company's financial statements to material misstatement and how fraud might occur, including through discussions with the trustees, discussions within our audit team planning meeting, updating our record of internal controls and ensuring these controls operated as intended. We evaluated possible incentives and opportunities for fraudulent manipulation of the financial statements. We identified laws and regulations that are of significance in the context of the group and parent charitable company by discussions with trustees and updating our understanding of the sector in which the group and parent charitable company operate.

Laws and regulations of direct significance in the context of the group and parent charitable company include The Companies Act 2006, the Charities and Trustee Investment (Scotland) Act 2005, the Charities Accounts (Scotland) Regulations 2006 (as amended) and guidance issued by the Charity Commission for England and Wales and the Office of the Scottish Charity Regulator.

Audit response to risks identified:

We considered the extent of compliance with these laws and regulations as part of our audit procedures on the related financial statement items including a review of financial statement disclosures. We reviewed the parent charitable company's records of breaches of laws and regulations, minutes of meetings and correspondence with relevant authorities to identify potential material misstatements arising. We discussed the parent charitable company's policies and procedures for compliance with laws and regulations with members of management responsible for compliance.

During the planning meeting with the audit team, the engagement partner drew attention to the key areas which might involve non-compliance with laws and regulations or fraud. We enquired of management whether they were aware of any instances of non-compliance with laws and regulations or knowledge of any actual, suspected or alleged fraud. We addressed the risk of fraud through management override of controls by testing the appropriateness of journal entries and identifying any significant transactions that were unusual or outside the normal course of business. We assessed whether judgements made in making accounting estimates gave rise to a possible indication of management bias. At the completion stage of the audit, the engagement partner's review included ensuring that the team had approached their work with appropriate professional scepticism and thus the capacity to identify non-compliance with laws and regulations and fraud.

Auditor's responsibilities for the audit of the financial statements (continued)

Audit response to risks identified:

There are inherent limitations in the audit procedures described above and the further removed non-compliance with laws and regulations is from the events and transactions reflected in the financial statements, the less likely we would become aware of it. Also, the risk of not detecting a material misstatement due to fraud is higher than the risk of not detecting one resulting from error, as fraud may involve deliberate concealment by, for example, forgery or intentional misrepresentations, or through collusion.

A further description of our responsibilities is available on the Financial Reporting Council's website at: www.frc.org.uk/auditorsresponsibilities. This description forms part of our auditor's report.

Use of our report

This report is made solely to the parent charitable company's members, as a body, in accordance with Chapter 3 of Part 16 of the Companies Act 2006, and to the parent charitable company's trustees, as a body, in accordance with Regulation 10 of the Charities Accounts (Scotland) Regulations 2006. Our audit work has been undertaken so that we might state to the parent charitable company's members and trustees those matters we are required to state to them in an auditor's report and for no other purpose. To the fullest extent permitted by law, we do not accept or assume responsibility to anyone other than the parent charitable company, the parent charitable company's members and trustees as a body, for our audit work, for this report, or for the opinions we have formed.



Jane Hill (Senior Statutory Auditor)
For an on behalf of Saffery Champness LLP
Westpoint
Peterborough Business Park
Lynch Wood
Peterborough
PE2 6FZ

Chartered Accountants
Statutory Auditor

26 January 2022

Date

Saffery Champness LLP is eligible to act as an auditor in terms of section 1212 of the Companies Act 2006

	Note	Unrestricted £	Restricted £	Total 2021 £	Total 2020 £
INCOME					
Donations and legacies	2a	45,485	7,885	53,370	33,275
Grants	2b	117,852	653,709	771,561	794,366
Charitable activities	3	29,138	23,431	52,569	57,109
<i>Income from other trading activities:</i>					
Coronavirus Job Retention Scheme		37,309	-	37,309	47,589
Other income	4	17,137	-	17,137	14,249
Commercial trading operation		77,703	-	77,703	81,041
Investment income	5	442	-	442	454
Total income		325,066	685,025	1,010,091	1,028,083
EXPENDITURE ON:					
Raising funds	7	62,807	-	62,807	65,584
Charitable activities	6	15,953	886,338	902,291	859,345
Total expenditure		78,760	886,338	965,098	924,929
Net income / (expenditure) for the year		246,306	(201,313)	44,993	103,154
Transfers between funds	18	(180,882)	180,882	-	-
Net movement in funds		65,424	(20,431)	44,993	103,154
Reconciliation of funds:					
Total funds brought forward	18	328,647	180,338	508,985	405,831
Total funds carried forward		394,071	159,907	553,978	508,985

The statement of financial activities includes all gains and losses recognised in the year.

All income and expenditure derive from continuing activities.

The notes on the following pages form part of these accounts.

	Note	Unrestricted £	Restricted £	Total 2021 £	Total 2020 £
INCOME					
Donations and legacies	2a	45,485	7,885	53,370	33,275
Grants	2b	117,852	653,709	771,561	794,366
Charitable activities	3	29,138	23,431	52,569	57,109
<i>Income from other trading activities:</i>					
Coronavirus Job Retention Scheme		37,309	-	37,309	47,589
Other income	4	17,137	-	17,137	14,249
Investment income	5	15,337	-	15,337	15,911
Total income		262,259	685,026	947,284	962,499
EXPENDITURE ON:					
Charitable activities	6	15,953	886,338	902,291	859,345
Total expenditure		15,953	886,338	902,291	859,345
Net income / (expenditure) for the year		246,306	(201,313)	44,993	103,154
Transfers between funds	18	(180,882)	180,882	-	-
Net movement in funds		65,424	(20,431)	44,993	103,154
Reconciliation of funds:					
Total funds brought forward	18	312,140	180,338	492,478	389,324
Total funds carried forward		377,563	159,907	537,471	492,478

The statement of financial activities includes all gains and losses recognised in the year.

All income and expenditure derive from continuing activities.

The notes on the following pages form part of these accounts.

	Note	2021	2020
FIXED ASSETS			
Tangible fixed assets	11	1,030	1,373
CURRENT ASSETS			
Stocks		201	145
Debtors	14	134,016	122,961
Cash at bank and in hand		<u>460,864</u>	<u>499,863</u>
		595,081	622,969
CURRENT LIABILITIES			
Creditors: amounts due within one year	15	(42,133)	(115,357)
NET CURRENT ASSETS		<u>552,948</u>	<u>507,612</u>
TOTAL ASSETS LESS CURRENT LIABILITIES		553,978	508,985
Creditors: amounts due after one year		-	-
TOTAL NET ASSETS		<u>553,978</u>	<u>508,985</u>
FUNDS OF THE CHARITY			
Restricted funds	18	159,907	180,338
Unrestricted funds	18	<u>394,071</u>	<u>328,647</u>
		<u>553,978</u>	<u>508,985</u>

The trustees have prepared group accounts in accordance with section 398 of the Companies Act 2006 and section 138 of the Charities Act 2011. These accounts are prepared in accordance with the special provisions of Part 15 of the Companies Act relating to small companies and constitute the annual accounts required by the Companies Act 2006 and are for circulation to members of the company. The notes on the following pages form part of these accounts.

The financial statements were approved by the Board of Trustees on 16th December 2021 and signed on their behalf by:



Ms Inez Smith
Chair

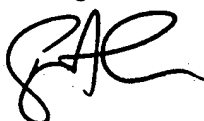
Company Registration No: 04382714 (E&W)

THE FROGLIFE TRUST
CHARITY BALANCE SHEET
AS AT 30 SEPTEMBER 2021

	Note	2021	2020
FIXED ASSETS			
Tangible fixed assets	11	1030	1373
Investments	12	<u>100</u>	<u>100</u>
		1,130	1,473
CURRENT ASSETS			
Stocks		201	146
Debtors	14	242,218	209,037
Cash at bank and in hand		<u>333,736</u>	<u>386,432</u>
		576,155	595,615
CURRENT LIABILITIES			
Creditors: amounts due within one year	15	(39,815)	(104,610)
NET CURRENT ASSETS			
		<u>536,340</u>	<u>491,005</u>
TOTAL ASSETS LESS CURRENT LIABILITIES			
		537,470	492,478
Creditors: amounts due after one year		-	-
TOTAL NET ASSETS			
		<u>537,470</u>	<u>492,478</u>
FUNDS OF THE CHARITY			
Restricted funds	18	159,907	180,338
Unrestricted funds	18	377,563	312,140
		<u>537,470</u>	<u>492,478</u>

The notes on the following pages form part of these accounts.

The financial statements were approved by the Board of Trustees on 16th December 2021 and signed on their behalf by:



Ms Inez Smith
Chair

Company Registration No: 04382714 (E&W)

THE FROGLIFE TRUST
STATEMENT OF CASH FLOWS AND CONSOLIDATED STATEMENT OF CASH FLOWS
AS AT 30 SEPTEMBER 2020

	<i>Note</i>	2021 Group £	2021 Charity £	2020 Group £	2020 Charity £
Cash Flows From Operating Activities					
Net cash provided by / (used in) operating activities	20	(39,441)	(68,033)	262,220	253,222
Cash Flows from Investing Activities					
Investment interest		442	15,337	454	15,911
Change in cash and cash equivalents in the year		(38,999)	(52,696)	262,674	269,133
Cash and cash equivalents brought forward		499,863	386,432	237,189	117,299
Cash and cash equivalents carried forward	21	460,864	333,736	499,863	386,432

THE FROGLIFE TRUST
NOTES TO THE FINANCIAL STATEMENTS
FOR YEAR ENDED 30 SEPTEMBER 2021

1 ACCOUNTING POLICIES

The principal accounting policies adopted, judgements and key sources of estimation uncertainty in the preparation of the financial statements are as follows:

a) Basis of preparation of financial statements

The financial statements have been prepared in accordance with Accounting and Reporting by Charities: Statement of Recommended Practice applicable to charities preparing their accounts in accordance with the Financial reporting Standard applicable in the UK and Republic of Ireland (FRS 102)(effective 1 January 2015) - (Charities SORP (FRS 102), the Financial Reporting Standard applicable in the UK and Republic of Ireland (FRS102), the Companies Act 2006, the Charities and Trustee Investment (Scotland) Act 2005 and regulation 8 of the Charities Accounts (Scotland) Regulations 2006 (as amended).

The charity meets the definition of a public benefit entity under FRS 102. Assets and liabilities are initially recognised at historical cost or transaction value unless otherwise stated in the relevant accounting policy notes.

The accounts are produced with the underlying currency being GBP.

b) Legal status of the Charity

The charity is a company limited by guarantee and has no share capital. In the event of the charity being wound up, the liability in respect of the guarantee is limited to £1 per member of the charity.

c) Going concern

At the time of approving the financial statements, the trustees have a reasonable expectation that the Trust has adequate resources to continue in operational existence for the foreseeable future. The trustees have considered the level of funds held and the expected level of income and expenditure for 12 months from authorising these financial statements. The Trust is reliant on grants to be able to carry out its objectives. Whilst these may be affected but the impact of Covid-19, the Trust has an adequate number of grant applications already in place or accepted for the coming 12 months. Additionally, further grants have been accepted post year end, with more grant applications coming back online. Thus the trustees continue to adopt the going concern basis of accounting in preparing the financial statements.

d) Group financial statements

The financial statements consolidate the results of the charity and its wholly owned subsidiary Froglife Trading Ltd on a line-by-line basis.

e) Fund accounting

Unrestricted funds are available to spend on activities that further any of the purposes of the charity. Restricted funds account for situations where a donor requires their donation must be spent on a specific purpose or where funds have been raised for a specific purpose.

The aim and use of each material restricted fund is set out in the notes to the financial statements.

f) Income

Income is recognised when the charity has entitlement to the funds, any performance conditions attached to the items of income have been met, it is probable that the income will be received and the amount can be measured reliably.

Where income has related expenditure (as with fundraising or contract income), the income and related expenditure are reported gross in the Statement of Financial Activities.

1 ACCOUNTING POLICIES (CONTINUED)

f) Income (continued)

Where income has related expenditure (as with fundraising or contract income), the income and related expenditure are reported gross in the Statement of Financial Activities.

Donations, grants and gifts are recognised when receivable. In the event that a donation is subject to fulfilling performance conditions before the charity is entitled to the funds, the income is deferred and not recognised until it is probable that those conditions will be fulfilled in the reporting period.

Income from Gift Aid tax reclaims is recognised for any donations with relevant Gift Aid certificates recognised in income for the year. Any amounts of Gift Aid not received by the year end are accounted for in income and accrued income in debtors.

For legacies, entitlement is taken on a case by case basis as the earlier of the date on which: the charity is aware that probate has been granted, the estate has been finalised and notification has been made by the executor(s) to the charity that a distribution will be made, or when a distribution is received from the estate. Receipt of a legacy, in whole or in part, is only considered probable when the amount can be measured reliably and the charity has been notified of the executors intention to make a distribution. If the legacy is in the form of an asset other than cash or an asset listed on a recognised stock exchange, recognition is subject to the value of the asset being able to be reliably measured and title to the asset has passed to the charity. Where legacies have been notified or the charity is aware of the granting of probate, and the criteria for income have not been met, then the legacy is treated as a contingent asset and disclosed if material.

Income received in advance for a future fundraising event or for visitor fees received in advance of an event are deferred until the criteria for income recognition are met.

Interest on deposit funds held is included when receivable and the amount can be measured reliably by the charity which is normally upon notification of the interest paid or payable by the bank. Dividends are recognised once the dividend has been declared and notification has been received of the dividend due. This is normally upon notification by our investment advisor of the dividend yield of the investment portfolio. Income tax recoverable in relation to investment income is recognised at the same time the investment income is receivable.

Sponsorship from events, fundraising and events registration fees are recognised in income when the event takes place. Trading income is recognised on point of sale for both donated and purchased goods.

g) Expenditure and irrecoverable VAT

Expenditure is recognised once there is a legal or constructive obligation to make a payment to a third party, it is probable that settlement will be required and the amount of the obligation can be measured reliably. All expenditure is accounted for on an accruals basis under the following headings:

Costs of raising funds are those cost incurred in attracting voluntary income and those incurred in fundraising.

Expenditure on charitable activities includes expenditure associated with conservation of amphibians and reptiles, education and training and providing information and awareness and include both the direct costs and support costs relating to these activities.

Where costs cannot be directly attributed to particular headings, they have been allocated to activities on a basis consistent with the use of those resources.

h) Volunteers

The value of the services provided by volunteers cannot be reliably estimated and therefore is not incorporated into these financial statements. Further details are provided in the Trustee's Report.

i) Fixed assets

All assets are capitalised at their historical cost when purchased.

Depreciation is provided to write off the cost less estimated residual value of all fixed assets over their expected economic useful lives as follows:

All fixed assets - 25% per annum reducing balance

The need for any impairment of a fixed asset write down is considered if there is concern over the carrying value of an asset and is assessed by comparing that carrying value against the value in use or realisable value of the asset when appropriate.

j) Investments

Fixed asset investments represent the equity share in Froglife Ltd, the wholly owned subsidiary company and are stated at cost in the charity balance sheet.

k) Stock

Stocks have been valued at the lower of cost and net realisable value

Net realisable value is based upon estimated selling price less further costs expected to be incurred to disposal. Provision is made for obsolete and slow moving items when appropriate.

l) Debtors

Trade and other debtors are recognised at the settlement amount due after any trade discount offered. Prepayments are valued at the amount prepaid net of any trade discounts due. Accrued income and tax recoverable is included at the best estimate of the amounts receivable at the balance sheet date.

m) Cash at bank and in hand

Cash at bank and cash in hand includes cash and short term highly liquid investments with a short maturity of three months or less from the date of acquisition or opening of the deposit or similar account.

n) Creditors

Creditors are recognised where the charity has a present obligation resulting from a past event that will probably result in the transfer of funds to a third party and the amount due to settle the obligation can be measured or estimated reliably. Creditors are normally recognised at their settlement amount after allowing for any trade discounts due.

o) Financial instruments

The Trust has elected to apply the provisions of Section 11 'Basic Financial Instruments' and Section 12 'Other Financial Instruments Issues' of FRS 102 to all of its financial instruments.

Financial assets are recognised in the Trust's Statement of Financial Position when the Trust becomes party to the contractual provisions of the instrument.

Financial assets are classified into specified categories. The classification depends on the nature and purpose of the financial assets and is determined at the time of recognition.

1 ACCOUNTING POLICIES (CONTINUED)

o) Financial instruments (continued)

Basic financial assets

Basic financial assets, which include trade and other debtors, are initially measured at transaction price including transaction costs and are subsequently carried at amortised cost using the effective interest method unless the arrangement constitutes a financing transaction, where the transaction is measured at the present value of the future receipts discounted at a market rate of interest. Other financial assets classified as fair value through the statement of financial activities are measured at fair value.

Other financial assets

Trade debtors, loans and other receivables that have fixed or determinable payments that are not quoted in an active market are classified as 'loans and receivables'. Loans and receivables are measured at amortised cost using the effective interest method, less any impairment.

Interest is recognised by applying the effective interest rate, except for short-term receivables when the recognition of interest would be immaterial. The effective interest method is a method of calculating the amortised cost of a debt instrument and of allocating the interest income over the relevant period.

The effective interest rate is the rate that exactly discounts estimated future cash receipts through the expected life of the debt instrument to the net carrying amount on initial recognition.

Impairment of financial assets

Financial assets, other than those held at fair value through the statement of financial activities, are assessed for indicators of impairment at each reporting end date.

Financial assets are impaired where there is objective evidence that, as a result of one or more events that occurred after the initial recognition of the financial asset, the estimated future cash flows have been affected. The impairment loss is recognised in the statement of financial activities.

Derecognition of financial assets

Financial assets are derecognised only when the contractual rights to the cash flows from the asset expire, or when it transfers the financial asset and substantially all the risks and rewards of ownership to another entity.

Classification of financial liabilities

Basic financial liabilities

Basic financial liabilities, including trade and other creditors, bank loans, loans from fellow group are initially recognised at transaction price unless the arrangement constitutes a financing transaction, where the debt instrument is measured at the present value of the future receipts discounted at a market rate of interest.

Trade creditors are obligations to pay for goods or services that have been acquired in the ordinary course of business from suppliers. Accounts payable are classified as 'creditors: amounts falling due within one year' if payment is due within one year or less. If not, they are presented as 'creditors: amounts falling due after more than one year'. Trade creditors are recognised initially at transaction price and subsequently measured at amortised cost using the effective interest method.

Other financial liabilities

Other financial liabilities, including debt instruments that do not meet the definition of a basic financial instrument, are measured at fair value, net of transaction costs. They are subsequently measured at amortised cost using the effective interest method.

Other financial liabilities (continued)

The effective interest method is a method of calculating the amortised cost of a financial liability and of allocating interest expense over the relevant period. The effective interest rate is the rate that exactly discounts estimated future cash payments through the expected life of the financial liability to the net carrying amount on initial recognition.

Derecognition of financial liabilities

Financial liabilities are derecognised when, and only when, the Charity's obligations are discharged, cancelled, or they expire.

p) Operating leases

Operating leases are recognised over the period of which the lease falls due.

Benefits received and receivable as an incentive to sign an operating lease are recognised on a straight line basis over the period of the lease.

q) Taxation

The company is considered to pass the test set out in Paragraph 1 Schedule 6 of the Finance Act 2010 and therefore it meets the definition of a charitable company for UK corporation tax purposes.

Accordingly, the company is potentially exempt from taxation in respect of income or capital gains received within categories covered by Chapter 3 Part 11 of the Corporation Tax Act 2010 or Section 256 of the Taxation of Chargeable Gains Act 1992, to the extent that such income or gains are applied exclusively to charitable purposes.

2a DONATIONS AND LEGACIES

	2021 Group £	2021 Charity £	2020 Group £	2020 Charity £
Unrestricted funds:				
Donations	45,485	45,485	25,066	25,066
	<u>45,485</u>	<u>45,485</u>	<u>25,066</u>	<u>25,066</u>
	2021 Group £	2021 Charity £	2020 Group £	2020 Charity £
Restricted funds:				
Donations	7,885	7,885	8,209	8,209
	<u>7,885</u>	<u>7,885</u>	<u>8,209</u>	<u>8,209</u>

2b GRANTS RECEIVED

Group and charity	2021 £	2020 £
Unrestricted funds:		
National Heritage Lottery Fund	-	28,800
The Gibson Charitable Trust	2,000	2,000
Esmee Fairbairn Foundation	114,852	50,000
Other grants under £1,000	1,000	-
Total unrestricted funds	<u>117,852</u>	<u>80,800</u>

Group and charity	£	£
Restricted funds:		
National Heritage Lottery Fund	443,551	389,319
City Bridge Trust	46,725	11,625
BBC Children in Need	17,368	41,495
Fenland District Council	-	1,091
Cambridgeshire Community Fund	5,000	7,000
Scottish Natural Heritage	269	1,091
Falkirk Council	-	1,500
Peterborough City Council	-	10,092
The Robertson Trust	28,000	-
Veolia Environmental Trust	7,607	51,239
Waitrose's Bags for Help	-	2,248
Somerset County Council	9,000	9,990
Biodiversity Challenge Fund via Scottish Natural Heritage	22,155	126,686
Heathrow Community Fund	12,106	19,859
The Hospital Saturday Fund	-	2,000
Western Riverside Environmental Fund	-	7,586
EB Scotland Limited	-	15,000
Clackmannanshire & Stirling Environmental Trust	-	6,689
Greener City Fund Community Grant Scheme	31,387	8,556
The Caignish Trust	-	1,500
W G Edwards	1,719	-
Nature Scot	3,333	-
Mayor of London- Grow Back Greener Fund	20,000	-
Ernest Kleinwort	5,000	-
Other grants under £1,000/Grant returned - Miller Hendry Foundation	489	(1,000)
	<u>653,709</u>	<u>713,566</u>

3 INCOME FROM CHARITABLE ACTIVITIES

Group and Charity	2021	2020
	£	£
Conservation of amphibians and reptiles	14,794	28,157
Education and training	10,900	9,254
Information and awareness	3,444	867
Unrestricted funds:	<u>29,138</u>	<u>38,278</u>
Conservation of amphibians and reptiles	1,188	17,387
Education and training	22,243	1,444
Restricted funds:	<u>23,431</u>	<u>18,831</u>

4 OTHER INCOME

Group and charity	2021	2020
	£	£
Corporate sponsorship	1,958	1,916
Other income	15,179	12,333
	<u>17,137</u>	<u>14,249</u>

All fundraising event income in both the current and previous year relate to unrestricted funds.

5 INVESTMENT INCOME

	2021	2021	2020	2020
	Group	Charity	Group	Charity
	£	£	£	£
Bank interest	442	242	454	179
Profits from trading company	-	15,095	-	15,732
	<u>442</u>	<u>15,337</u>	<u>454</u>	<u>15,911</u>

All investment income in both the current year and prior year relate to unrestricted funds.

6 EXPENDITURE

Expenditure on Charitable Activities - Current Year

	Direct Costs	Support Costs	2021 Total
	£	£	£
Group and Charity			
Conservation of amphibians and reptiles	382,166	173,758	555,924
Education and training	243,012	88,216	331,228
Information and awareness	9,793	5,346	15,139
	<u>634,971</u>	<u>267,320</u>	<u>902,291</u>

Included within expenditure on charitable activities are restricted funds of £886,338 and unrestricted funds of £15,953

Expenditure on Charitable Activities - Prior Year

	Direct Costs	Support Costs	2020 Total
	£	£	£
Group and Charity			
Conservation of amphibians and reptiles	450,935	162,772	613,707
Education and training	153,401	82,638	236,039
Information and awareness	4,590	5,008	9,598
	<u>608,926</u>	<u>250,419</u>	<u>859,345</u>

Included within expenditure on charitable activities are restricted funds of £800,919 and unrestricted funds of £58,426

7 RAISING FUNDS

Expenditure on raising funds as shown in the group statement of financial activities relates to costs incurred by the trading subsidiary which relate to unrestricted funds in both the current and prior year.

8 ANALYSIS OF SUPPORT COSTS

	Conservation	Education & Training	Information & awareness	2021 Total
	£	£	£	£
Rent and rates	10,771	5,468	331	16,570
Insurance	1,865	947	57	2,869
Cleaning and waste	1,071	544	33	1,648
Travel and Subsistence	1,085	551	33	1,669
Printing, postage and stationery	1,415	719	44	2,178
Computer and telephone	5,181	2,630	159	7,970
Repairs and renewals	1,221	620	38	1,879
Staff costs	135,644	68,866	4,173	208,683
Recruitment and training	6	3	0	9
Legal and professional fees	5,125	2,602	158	7,885
Depreciation	223	113	7	343
Bank charges	411	209	13	633
Irrecoverable VAT on support costs	3,180	1,614	98	4,892
Miscellaneous	2,784	1,413	86	4,283
Governance - trustee expenses	-	-	-	-
Governance - audit costs	3,776	1,917	116	5,809
	<u>173,758</u>	<u>88,216</u>	<u>5,346</u>	<u>267,320</u>

	Conservation	Education & Training	Information & awareness	2020 Total
	£	£	£	£
Rent and rates	10,461	5,311	322	16,094
Insurance	1,895	962	58	2,915
Cleaning and waste	1,211	615	37	1,863
Travel and Subsistence	2,963	1,504	91	4,558
Printing, postage and stationery	1,131	574	35	1,740
Computer and telephone	5,089	2,584	157	7,830
Repairs and renewals	2,588	1,314	80	3,982
Staff costs	115,414	58,594	3,550	177,558
Recruitment and training	861	437	27	1,325
Legal and professional fees	9,961	5,057	307	15,325
Depreciation	298	151	9	458
Bank charges	227	115	7	349
Irrecoverable VAT on support costs	3,446	1,750	106	5,302
Miscellaneous	1,766	897	54	2,717
Governance - trustee expenses	199	101	6	306
Governance - audit costs	5,263	2,672	162	8,097
	<u>162,772</u>	<u>82,638</u>	<u>5,008</u>	<u>250,419</u>

In 2021 and 2020 support costs have been allocated in line with the aims of the project and its activity undertaken.

9 STAFF EMOLUMENTS AND TRUSTEE EXPENSES

	2021	2020
	£	£
Wages and salaries	486,873	402,154
Social security costs	40,978	32,436
Pension costs	10,207	7,769
	<u>538,058</u>	<u>442,359</u>

Pension costs were paid under the new auto-enrolment requirements to the National Employers Savings Trust.

	2021	2020
	No	No
The average number of employees during the year was:		
Commercial trading operations	1	1
Direct Charitable activities	16	10
Support services	6	6
	<u>23</u>	<u>17</u>

No employee received emoluments in excess of £60,000 (2020: none)

The charity considers its key management personnel to comprise of the Trustees and the senior management team as disclosed in the Trustees' Report. None of the trustees received any remuneration or benefits in kind from the charity during the year (2020: £nil). The total employee benefits of 3 key management personnel (2020: 5 key management personnel) were £117,492 (2020: £189,273).

Expenses relating to travel and subsistence for attendance at Trustee meetings was reimbursed to 0 Trustee (2020: 1) during the year amounted to £nil (2020: £307).

10 NET INCOMING / (EXPENDITURE)

	2021	2020
Net incoming /(expenditure) is stated after charging:	£	£
Depreciation including loss on disposal	343	458
Auditors' remuneration:		
for audit services	8,908	9,514
for accountancy services		750
Operating lease rentals	23,919	25,986

11 TANGIBLE FIXED ASSETS

Group and charity	Office Equipment £	Computer Equipment £	Total £
Cost or Valuation			
As at 1 October 2020	2,172	23,932	26,104
As at 30 September 2021	2,172	23,932	26,104
Depreciation			
As at 1 October 2020	2,069	22,662	24,731
Charge for the year	26	317	343
As at 30 September 2021	2,095	22,979	25,074
Net Book Value			
As at 30 September 2021	77	953	1,030
As at 30 September 2020	103	1,270	1,373

12 INVESTMENTS

	2021	2020
Charity	£	£
Equity investment in trading subsidiary	100	100
Total charity investment	100	100

13 TRADING SUBSIDIARY

The Charity owns 100 shares of £1 each in its trading subsidiary, Froglife Ltd (Company No: 02348393) incorporated in the United Kingdom, whose principle place of business is 1 Loxley Werrington Peterborough PE4 5BW and whose main purpose is to carry out the commercial conservation contracts and surveys. These are the only shares allotted, called up and fully paid. The activities and results of this company are summarised as follows:

	2021	2020
	£	£
Turnover	77,703	81,041
Costs of sales	(50,620)	(54,694)
Gross Profit	27,083	26,347
Operating expenses	(12,106)	(10,796)
Profit on ordinary activities before interest	14,977	15,551
Interest receivable	199	275
Interest payable	(81)	(94)
Net trading profit	15,095	15,732

13 TRADING SUBSIDIARY (continued)Balance Sheet:

Current assets	130,188	113,430
Liabilities	(113,581)	(96,823)
Net assets	<u>16,607</u>	<u>16,607</u>
Represented by:		
Capital	100	100
Reserves	<u>16,507</u>	<u>16,507</u>
	<u>16,607</u>	<u>16,607</u>

14 DEBTORS

	2021 Group	2021 Charity	2020 Group	2020 Charity
	£	£	£	£
Trade debtors	13,118	10,115	19,056	19,056
Amounts owed by group undertakings	-	111,263	-	86,076
Taxation recoverable	-	-	-	-
Other debtors	3,058	3,000	3,000	3,000
Prepayments and accrued income	117,840	117,840	100,905	100,905
	<u>134,016</u>	<u>242,218</u>	<u>122,961</u>	<u>209,037</u>

15 CREDITORS: Amounts falling due within one year

	2021 Group	2021 Charity	2020 Group	2020 Charity
	£	£	£	£
Trade creditors	11,340	11,339	62,131	57,971
Taxation and social security	14,200	14,200	14,630	12,025
Other creditors	-	-	-	-
Accruals and deferred income	16,593	14,276	38,596	34,614
	<u>42,133</u>	<u>39,815</u>	<u>115,357</u>	<u>104,610</u>

17 COMMITMENTS UNDER OPERATING LEASES

At 30 September the group and charity had total commitments under non-cancellable operating leases as follows:

	2021 Land and buildings	2021 Other	2020 Land and buildings	2020 Other
Due within one year	13,660	860	17,410	860
Due in 2-5 years	-	3,285	11,250	4,145
	<u>13,660</u>	<u>4,145</u>	<u>28,660</u>	<u>5,005</u>

18a FUNDS -current year	Brought forward 1/10/20	Income	Expenditure	Transfers	Carried forward 30/9/21
Group	£	£	£	£	£
<u>Unrestricted Funds</u>					
General funds	328,647	325,066	(78,760)	(180,882)	394,071
<u>Restricted Funds</u>					
Green Pathways Peterborough & Fenland & Nature and Nourishment	31,440	36,435	(56,170)	-	11,705
Green Pathways Glasgow	30,064	33,251	(41,130)	-	22,185
Wildlife surveys & research tunnels	11,700	5,333	(9,611)	-	7,422
Tails of Amphibian Discovery - Main	-	165,254	(252,193)	86,939	0
Somerset Green Pathways for Life	12,356	10,719	(20,692)	-	2,383
Come Forth for Wildlife - Main & incorporating Veterans March Forth for Wildlife	18,687	206,706	(318,086)	92,693	0
Discovering Reptiles - development	19,007	24,120	(34,079)	-	9,048
Green Pathways Sussex	43,280	5,000	(32,761)	-	15,519
Leaping forward for Dementia - London	7,804	47,625	(46,845)	-	8,584
Leap Frog Schools - habitat projects	6,000	3,000	(6,817)	-	2,183
Yorkshire Tails of Amphibian Discovery	-	123,950	(43,072)	-	80,878
London Grow Back Greener - Streatham Common	-	21,188	(21,932)	744	0
Discovering Dew Ponds-Sussex	-	797	(1,303)	506	0
Toads On Roads - group funds	-	1,647	(1,647)	-	-
Total Restricted Funds	180,338	685,025	(886,338)	180,882	159,907
Total Funds	508,985	1,010,091	(965,100)	-	553,978

The Coronavirus Job Retention Scheme grant claimed during the year was to support the costs of core staff. The cost of core staff included in the support costs are charged to restricted projects. Within restricted expenditure are support costs covered by the CJRS grant of £36,648

18b FUNDS -prior year	Brought forward 1/10/19	Income	Expenditure	Transfers	Carried forward 30/9/20
Group	£	£	£	£	£
<u>Unrestricted Funds</u>					
General funds	271,925	287,477	(124,010)	(106,745)	328,647
<u>Restricted Funds</u>					
Green Pathways Peterborough & Fenland	17,481	50,542	(36,583)	-	31,440
Green Pathways Glasgow	49,500	4,423	(23,859)	-	30,064
Sheffield Wetland Corridor	5,446	38,197	(47,713)	4,070	-
Wildlife surveys & research tunnels	5,837	10,092	(4,229)	-	11,700
Conservation & Learning Co-ordinators	-	-	(45,552)	45,552	-
Tails of Amphibian Discovery - Main	30,727	196,663	(281,336)	53,946	-
Working in Prisons	9,981	-	(13,158)	3,177	-
Somerset Green Pathways for Life	14,934	12,345	(14,923)	-	12,356
Come Forth for Wildlife - Main & incorporating Veterans March Forth for Wildlife	-	336,088	(317,401)	-	18,687
Discovering Reptiles - development	-	30,150	(11,143)	-	19,007
Green Pathways Sussex	-	44,481	(1,201)	-	43,280
Leaping forward for Dementia - London	-	11,625	(3,821)	-	7,804
Leap Frog Schools - habitat projects	-	6,000	-	-	6,000
Total Restricted Funds	133,906	740,606	(800,919)	106,745	180,338
Total Funds	405,831	1,028,083	(924,929)	-	508,985

Allocation of the charity's support costs across the restricted projects on an activity and aims basis results in some projects requiring transfers from unrestricted funds.

Included within Unrestricted General Funds carried forward is £16,507 (2020: £16,507) which relates to Froglife Limited, the Charity's trading subsidiary.

London Tails of Amphibian Discovery (T.O.A.D): This project would have entered its final year this year but due to the pandemic and the disruption to session delivery it has been extended to end 31st March 2022. We are on target for all of the activities to be delivered in accordance with the main donor National Lottery Heritage Fund Approved Purposes, with some activities over-reaching the target. We have also over-reached the target for habitat works.

London Streatham Common: Through a Grow Back Greener grant from the City of London Mayors office we have undertaken habitat works and volunteer training at Streatham Common.

Come Forth for Wildlife: This project has completed its second year in September 2021. The project is on target to deliver all of the National Lottery Heritage Fund Approved Purposes within the original timescale despite not delivering sessions during the pandemic.

Yorkshire Tails of Amphibian Discovery (T.O.A.D): This one year project funded by Defra's Green Recovery Fund managed by National Lottery Heritage Fund is delivering an extensive programme of habitat works and public engagement. It will complete in March 2023.

18 FUNDS NOTES -continued

Peterborough /Glasgow/Sussex Green Pathways Schemes: These three projects are working with disadvantaged and/or vulnerable children/young people in delivering nature focused outdoor activities. Unfortunately due to a lack of funding we will after 12 years of delivery, be ending the Peterborough project on 31st March 2021. Thanks to a grant from The Robertson Trust we will be expanding the Glasgow project to other regions in Scotland, starting with Renfrewshire. The grant is for five years which provides us with a good timeframe to expand the project and raise funds to deliver new projects.

Glasgow Green Pathways for Life; London Leaping Forward for Dementia & Somerset Green Pathways for Life : These three projects are all working with people living with dementia and their support workers/carers on delivering outdoor nature focused activities.

Nature & Nourishment: This new project is a new area of work for Froglife. We are trialling the project in the Fenlands. The project, through using props, is highlighting to school children the inter-dependence of nature and people and raising awareness of the vital role that nature plays in providing people with healthy food.

Discovering Reptiles: This project is working nationally on delivering workshops to land manager and owners on reptile ecology, surveying and managing their habitats. The project is also providing land managers/owners with reptile tins in order to undertake surveys and submit their data to Froglife via the Froglife App. This will help to address the current very low status of reptile data.

Leapfrog Schools : We have improved several school grounds for wildlife providing natural elements for wildlife and children to enjoy and learn.

Toads on Roads: Co-ordinating toad patrols across the UK to help amphibians across busy roads to reach their hereditary breeding ponds. We hosted an on-line webinar to raise awareness of the impact of road mortality on wildlife internationally.

Amphibian Mortality: Our partnership with the Zoological Society of London, British Trust for Ornithology and RSPB has continued with Froglife acting as the portal for reports of amphibian or reptile diseases and mortality.

Reserve Management: We have continued to manage Hampton Nature Reserve on behalf of Value Nature. We have undertaken habitat works as part of the CES grant and have delivered regular weekly volunteer sessions. We have taken on the management of Eye Green Nature Reserve with a fifteen year License to Occupy in place and Boardwalks also with a fifteen year License to Occupy however due to a lack of financial resources the latter will not be managed until such time as resources have been secured.

Research : We have continued to monitor several wildlife tunnels in the UK and in Europe. We are currently involved in several applied research projects working with Universities and their students and others. We are working with the Open University in evaluating the social impact of our Peterborough Green Pathways Scheme.

Social Media / Enquiry Service: Our social media presence continues to go from strength to strength, with Froglife now having a presence on several platforms. This increase in social media has taken some pressure off the email Enquiry Service which is not as busy as it used to be, but does still receive regular email enquiries.

Froglife Limited t/a Froglife Ecological Services (FES): FES has worked with several private clients and with the charity in delivering a range of ecological services. FES also delivered numerous paid-for training courses.

19a ANALYSIS OF NET ASSETS BETWEEN FUNDS-current year

Group	Unrestricted £	Restricted £	Total 2021 £
Tangible fixed assets	1,030	-	1,030
Current assets	416,189	178,892	595,081
Creditors: amount falling due within one year	(23,148)	(18,985)	(42,133)
Creditors: amount falling due in more than one year	-	-	-
	<u>394,071</u>	<u>159,907</u>	<u>553,978</u>

19b ANALYSIS OF NET ASSETS BETWEEN FUNDS-prior year

Group	Unrestricted £	Restricted £	Total 2020 £
Tangible fixed assets	1,373	-	1,373
Current assets	357,644	265,325	622,969
Creditors: amount falling due within one year	(30,370)	(84,987)	(115,357)
Creditors: amount falling due in more than one year	-	-	-
	<u>328,647</u>	<u>180,338</u>	<u>508,985</u>

20**RECONCILIATION OF NET MOVEMENT IN FUNDS TO NET CASH FLOW FROM OPERATING ACTIVITIES**

	2021 Group £	2021 Charity £	2020 Group £	2020 Charity £
Net income / (expenditure) for the year	44,993	44,993	103,154	103,154
Adjustment for:				
Depreciation charges including loss on disposal	343	343	458	458
Interest from investments	(442)	(15,337)	(454)	(15,911)
(Increase) / Decrease in stocks	(56)	(56)	130	130
(Increase) / Decrease in debtors	(11,055)	(33,181)	114,314	127,325
(Decrease) / Increase in creditors	(73,225)	(64,796)	44,618	38,066
Net cash provided by/(used in) operating activities	(39,441)	(68,033)	262,220	253,222

21 ANALYSIS OF NET DEBT

Group	At 30 September 2020	Cash Flow	Non Cash Flow	At 30 September 2021
Cash in hand	499,863	(38,999)	-	460,864

22 ANALYSIS OF CASH AND CASH EQUIVALENTS

	2021 Group £	2021 Charity £	2020 Group £	2020 Charity £
Cash at bank and in hand	460,864	333,736	499,863	386,432
Total cash and cash equivalents	<u>460,864</u>	<u>333,736</u>	<u>499,863</u>	<u>386,432</u>

23 RELATED PARTIES

There have been no related party transactions in the reporting period that require disclosure.

The Froglife Trust

*Leaping forward for amphibian
and reptile conservation*

Working together to save the species

