



CHFP041

COMPANIES FORM No. 395

Particulars of a mortgage or charge

Pursuant to section 395 of the Companies Act 1985

A fee of £10 is payable to Companies House in respect of each register entry for a mortgage or charge.**395**NAT ZC0X2
098042Please do not
write in
this marginPlease complete
legibly, preferably
in black type or
bold block letteringTo the Registrar of Companies
(Address overleaf - Note 6)

For official use

Company number

(2)

4106869

Name of company

* SUPERBOND LIMITED ("the Company")

*Insert full name
of company

Date of creation of the charge

5 JANUARY 2001

Description of the instrument (if any) creating or evidencing the charge (note 2)

Fixed Charge over Chattels created by a Deed dated 05-01-01 and made between (1) the Company and (2) NMB-Heller Limited of Enterprise House, Bancroft Road, Reigate, RH2 7RT ("NMBH"), such instrument being referred to herein as the "Deed".

Amount secured by the mortgage or charge

All monies whatsoever, present or future, actual or contingent, due owing or incurred by the Company to NMBH and whether incurred as principal or surety or alone or jointly with any other person (the "Secured Obligations", which expression shall also include (i) all costs, charges, liabilities and expenses incurred by NMBH and/or any Receiver appointed by it in seeking to recover the Secured Obligations and/or in the preservation or the enforcement of the Deed and the assets charged by the Deed and (ii) interest on all of such monies at the rates agreed or, in the absence of agreement at the highest rate applicable to any of the Secured Obligations). The Company covenants with NMBH on demand to pay and discharge the Secured Obligations.

Names and addresses of the mortgagees or persons entitled to the charge

NMB-Heller Limited

Enterprise House, Bancroft Road

Reigate, RH2 7RT

Postcode

Presentor's name, address and
reference (if any):

NMB-Heller Limited
Enterprise House,
Bancroft Road
Reigate, RH2 7RT

Tel: 01737 841200

Attn: Legal Department

Time critical reference

For official use
Mortgage section

Post room

A29
COMPANIES HOUSE0272
12/01/01

Short particulars of all the property mortgaged or charged

"Pursuant to the Deed the Company with full title guarantee charged and released to NMBH all its present and future right, title and interest in and to the following assets (the "**Charged Assets**") as a continuing security for the payment and discharge of all the Secured Obligations:

See attached Schedule

/continued.....

Please do not
write in
this margin

Please complete
legibly, preferably
in black type or
bold block
lettering

Particulars as to commission allowance or discount (note 3)

Nil

Signed *J M Mather*

Date 10 Jan 2001

On behalf of [company] [mortgagee/chargee]*

A fee of £10 is
payable to
Companies House
in respect of each
register entry for a
mortgage or
charge.
(See Note 5)

*Delete as
appropriate

Notes

1. The original instrument (if any) creating or evidencing the charge, together with these prescribed particulars correctly completed must be delivered to the Registrar of Companies within 21 days after the date of creation of the charge (section 395). If the property is situated and the charge was created outside the United Kingdom delivery to the Registrar must be effected within 21 days after the date on which the instrument could in due course of post, and if dispatched with due diligence, have been received in the United Kingdom (section 398). A copy of the instrument creating the charge will be accepted where the property charged is situated and the charge was created outside the United Kingdom (section 398) and in such cases the copy must be verified to be a correct copy either by the company or by the person who has delivered or sent the copy to the registrar. The verification must be signed by or on behalf of the person giving the verification and where this is given by a body corporate it must be signed by an officer of that body. A verified copy will also be accepted where section 398(4) applies (property situate in Scotland or Northern Ireland) and Form No. 398 is submitted.
2. A description of the instrument, eg "Trust Deed", "Debenture", "Mortgage" or "Legal charge", etc, as the case may be, should be given.
3. In this section there should be inserted the amount or rate per cent. of the commission, allowance or discount (if any) paid or made either directly or indirectly by the company to any person in consideration of his;
 - (a) subscribing or agreeing to subscribe, whether absolutely or conditionally, or
 - (b) procuring or agreeing to procure subscriptions, whether absolute or conditional, for any of the debentures included in this return. The rate of interest payable under the terms of the debentures should not be entered.
4. If any of the spaces in this form provide insufficient space the particulars must be entered on the prescribed continuation sheet.
5. Cheques and Postal Orders are to be made payable to **Companies House**.
6. The address of the Registrar of Companies is:-

Companies House, Crown Way, Cardiff CF4 3UZ

Short particulars of all the property mortgaged or charged (Continued)

Please do not
write in this
binding margin

Please complete
legibly, preferably
in black type, or bold
block lettering

The Deed additionally provides that:

The charge created shall be a fixed charge.

If NMBH receives notice of any subsequent mortgage, charge, assignment or other disposition affecting the Charged Assets or any part thereof or interest therein NMBH may open a new account for the Company; if NMBH does not open a new account then unless NMBH gives express written notice to the contrary to the Company it shall nevertheless be treated as if it had done so at the time when it received such notice and as from that time all payments made by or on behalf of the Company to NMBH shall be credited to the new account and shall not operate to reduce the amount due from the Company to NMBH at the time when it received such notice.

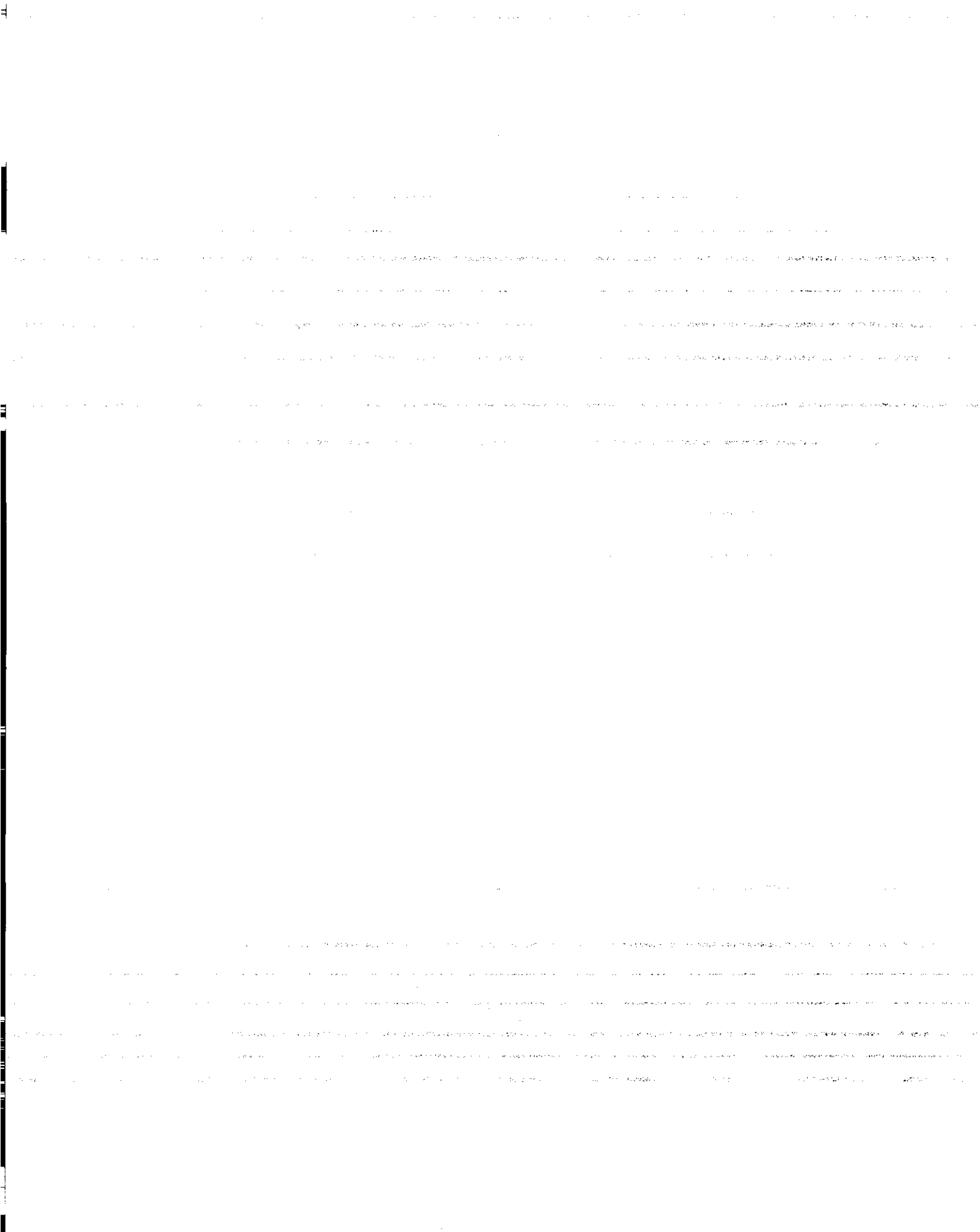
The Company shall at any time if and when required by NMBH (and at the Company's cost) execute such further legal or other mortgages, charges or assignments in favour of NMBH as NMBH shall require over all or any of the Company's assets both present and future to secure the Secured Obligations, such further mortgages, charges or assignments to be in such form as NMBH may require.

The Company by way of security irrevocably appoints NMBH and the persons deriving title under it and any Receiver jointly and also severally to be its Attorney for it and in its name and on its behalf and as its act and deed or otherwise to execute and complete in favour of NMBH or its nominees or of any purchaser any documents which NMBH may require for perfecting its title to the Charged Assets or for vesting the Charged Assets in NMBH or its nominees or in any purchaser and otherwise generally to sign seal and deliver and otherwise perfect any legal or other mortgage, charge security or assignment as referred to above and all such deeds, assurances, agreements and documents and do all such acts and things as may be required for the full exercise of all or any of the powers conferred by this Deed or which may be deemed expedient by the Receiver for any of these purposes and the appointment shall operate as a general power of attorney made under Section 10 of the Power of Attorney Act 1971. The Company covenants with NMBH and separately with any such Receiver that on request it will ratify and confirm all security agreements, documents, acts and things and all transactions entered into by NMBH or such Receiver or by the Company at the instance of NMBH or such Receiver in the exercise or purported exercise of its or his powers.

Pursuant to the Deed the Company undertakes to NMBH that at all times whilst the security constituted by the Deed remains in force the Company shall:

- (a) not, otherwise than by the Deed, or unless NMBH shall have given its prior written consent, create or permit to exist any fixed or floating charge, mortgage, assignment, lien, declaration of trust, reservation or retention of title arrangement or other security (together "**Encumbrance**") on, or allow any competing rights whatsoever to affect, any part of the Company's property, assets or undertaking, nor enter into any agreement or arrangement to do so;
- (b) not, unless NMBH shall have given its prior written consent, assign, sell or otherwise dispose of, or permit or suffer any person to obtain any interest in, or to obtain or share the possession or use of, any of the Charged Assets, nor enter into any agreement or arrangement to do so;
- (c) deposit with NMBH for it to retain any deeds or documents relating to the Charged Assets which NMBH may from time to time require.

The Company further agrees that NMBH may (but shall be under no obligation to) at any time, without notice or demand and notwithstanding any settlement of account or other matter whatsoever, combine or consolidate all or any of its accounts with NMBH and/or set-off or transfer all and any moneys standing to the credit of any one or more accounts of the Company with NMBH or otherwise owing by NMBH to the Company in or towards satisfaction of any of its obligations or liabilities to NMBH whether present or future, actual or contingent, primary or collateral, several or joint and whether owing under the Deed or otherwise and authorises NMBH to purchase with such moneys such other currencies as may be necessary to effect such set-off or transfer at the then prevailing spot rate of exchange as conclusively determined by NMBH. All references to "NMBH" above shall include any Affiliate of NMBH."



The Schedule

Charged Assets

MAYLANDS AVENUE
HEMEL HEMPSTEAD
HERTS
HP2 7EN

PLANT AND MACHINERY

PRESS SHOP AREAS

R.A.S. type R.A.S. 74.30 CNC box and pan folding
machine 3200mm x 4mm capacity
Machine No. 71/30
with R.A.S. System 9000 controls, backgauge,
large quantity tooling and associated equipment
(subject to distraint)

Promecam type RG-25-12 upstroking hydraulic
Pressbrake
Serial No. 02025122076
with Hibass Photomec lightguards, backgauging
and associated equipment

Promecam type RG103 upstroking hydraulic
Pressbrake
Registration No. R0001009
Serial No. 0210030664
with Hurco Autobend, AB5C, CNC backgauge,
Sick type LVS 800-2200 light guards and associated
Equipment

Edwards Pearson model 100X3100 RT CNC hydraulic
downstroking pressbrake
Serial No. 92P093
with Cybelelec DNC 96PS backgauging, large
quantity tooling and associated equipment
(subject to distraint)

Amada type SP30 single station fabrication punch,
29 tons capacity

Serial No. 305274 (1985)
with Amadan SS system 2 control, tooling
and associated equipment

Cutlass Clipper portable stud welder
Serial No. 870211

Amada type CSW220 corner notcher with edge
notching attachment
Serial No. 5G2240 (1980)

Mobile edge deburring machine

Vanco vertical belt finisher 2in x 12in between
centres capacity
Serial No. 8509
with Mardon dust collection unit

Vanco vertical belt finisher 1in x 10in capacity
Serial No. 4929
on steel trolley

Norton No. 5S flypress on stand

Promecam type RG80-25 upstroking hydraulic
Pressbrake
Registration No. R0001013
Serial No. Unavailable
with Hibass light guards, large quantity tooling
and equipment

Rhodes flypress on stand

4: Robur type ERGO/8008 hydraulic electric
pallet trucks, 800kg capacity
Serial No. 24800397 (1996), 27550398 (1996),
963071 (1996), 963075 (1996)

2: Robur hand operated hydraulic pallet trucks

6in capacity hand lever guillotine

Pedrazolli model TL260 260mm manual cold cut

saw with coolant and steel stand
Serial No. 371

Fobco Star 1/2in capacity bench drill
Serial No. 43543
with rise and fall table

Meddings Pacera single spindle bench model
tapping machine
Serial No. TB4 37901

Edwards 6 ton open back inclining ungeared,
adjustable Stroke mechanical power press
with guards and equipment

No. 2 fly press on steel stand

Norton No. 8 heavy duty fly press on steel stand
Serial No. MHM9

Sweeney & Blocksidge deep throat heavy duty
fly press
ID No. MNM6
mounted on steel stand

1990
P J Hare Limited model SB5 5 tonne C frame bench
model pneumatic press with pressure gauge, guards
and accessories
Serial No. 90201750
mounted on steel stand

Manual bench top tube bending machine with
selection of dies

Progress No. 3 16mm floor model pillar drill, 1 HP
Serial No. 162543 916
5 speeds, 70-1180 RPMS, rise and fall table
with machine vice and equipment

Butterly No. 4 20 ton open back ungeared inclining
adjustable stroke mechanical power press
1in to 31/2in stroke, Udal interlock guards and
equipment

F J Edwards 30 ton mechanical eccentric press
with interlock guards and equipment

Hand hydraulic pedestrian operated fork lift truck

F J Edwards initial pinch powered pyramid bending
rolls 49in x 4mm - ESMB capacity
Serial No. 532 1S51 69-C/26528

Stanley hand hydraulic pallet truck

3in capacity bar bender on steel stand

Pedrazzoli Super Brown 300DV indexed pneumatic
feed cold cut saw infeed and exit conveyors,
coolant, pneumatic clamping

Vanco 1in x 10in vertical belt finisher on mobile
steel stand
Serial No. 2768

TD 33S automatic tube end deburring machine
Serial No. 8811127

British Federal 50KVA pneumatic resistance seam
welding machine
Serial No. 12708
with British Federal type D5SS1 control and foot
switch

British Federal 25 KVA rocker arm resistance spot
welder
Serial No. 18054

Meritius model 500 2540 30KVA pneumatic resistance
spot welder
Serial No. 27517

4ft x 4ft x 3ft stainless steel degreasing dip tank
with pipes and valves etc.

Tecna jib mounted 16 KVA manual spot welding

machine

Serial No. 07120

with Tecna Telex 520154 control, electric hoist,
leads and accessories

Kauser Kraft model 167193 500kg hydraulic
engine hoist

Serial No. 1522

4: mobile pneumatic riveting/fastening guns

WELDING AREA

Murex Transtig AC/DC 275 S tig welder

Serial No. M1-50 2044

with Tradesmig 235 system mig welder with leads,
regulators and equipment

Racal fume hood pneumatic angle grinder, welding
table, engineers vice mounted on steel stand,
welding screen and associated equipment

Wall mounted fume extractor with ducting to
atmosphere

Kemppi Master tig AC/DC 2500W mobile tig welder
with leads and equipment

Serial No. 6162505-840532G

Murex Transtig AC/DC 260 Squareware 260 Amp
tig welder with leads and equipment

2: Racal Optrel fume hoods

Murex Transtig AC/DC 360 Squareware 360 amp
tig welder with Murex Tradesmig 235 system/tig
welder with leads and equipment

3: Brit 500 kgs hydraulic platform cart/lift

2: wall mounted fume extractors with ducting to
atmosphere

Test-Rite 6in bench grinder

Various welding jigs and fixtures)
)
Welding screens)
)
3: sections of pallet rack shelving)
)
Welding tables)
)
Operators stools)
)
Bottle trolley)
)
Warehouse safety ladders)
)
Sundry loose items)

MAIN FACTORY FLOOR

Haven Equipment Co. 14 metre manual roll conveyor
line with 1: turntable and 1: Edmo lift hydraulic
200 kgs scissor lift

Haven Equipment Co. 8 metre manual roll conveyor
with 1: Jihab 1000 kgs hydraulic scissor lift

Model Mark rotary marking machine
Serial No. 769034

8in manual bar cropper mounted on steel stand

Cutlass Clipper mobile stud welding machine
Serial No. 890305
with gun, leads and equipment

Bridges No. 7 double ended pedestal grinder
Serial No. 801050

Stanley model B69/2350, 1000 kgs pedestrian electric
fork lift/stacker
Serial No. 2068501

6ft x 4ft steel surface and marking out table with

steel base

BVC TH4 mobile industrial vacuum cleaner
Serial No. 5833

Bartlett 5 metre stainless steel extraction hood with
equipment

FINISHING DEPARTMENT

Automatic rumbling machine with cage and equipment

Marryats model 1612 combination belt finishing and
polishing spindle
Serial No. 47851
with freestanding dust collector

Demag freestanding 250 kg swing jib crane with
Demag Junior electric hoist

Crown hydraulic pallet truck

Heated cabinet for storage of paints and lacquers

Hunter 7m x 1m electric hydraulic scissor lift
platform with 2: hydraulic scissor mechanisms

Bartlett 8m x 2m modular stainless steel extraction
hood with in built filters and lights

Bartlett 8m x 2m riveted galvanised steel extraction
hood with in built filters and lights

Mobile electric pump unit with stainless steel
2ft x 2ft x 21/2ft storage vessel

7 station flexible hose fume extraction system
with Nederman and Cyclone blowers to the
atmosphere

Edmo lift 1000 kgs hydraulic scissor lift

Serial No. 0825578

ELECTRICAL AREA

2: Clare model A433R earth continuity resistance testers
Serial No. 15847A1

JST model AP-K2 bench model pneumatic crimping
machine
Serial No. 63-8293 (1988)
with parts counter and foot control

JST Takbro model AP-F3 bench model pneumatic
crimping machine
Serial No. 8811-574
with foot control

Pluda model A9040 bench model wire stripper
Serial No. 4518

CCM-1200 automatic cable cutting to length
machine with digital controls
Serial No. ED703

2: Megger model FT4 flash tester

Fork lift personnel safety lifting cage

8in manual bar cropper mounted on steel base

2: mobile vacuum pump with gauges

Oxy-acetylene cutting torch with regulators and
equipment

COUNTER SHOP WELD AND POLISH AREA

Kemppi Master 2200 415 volt AC tig welder
with equipment

Kemppi Master 2200 240 volt AC tig welder

with equipment
(on site during inspection)

Rotafera flexible shaft grinding and polishing machine

Mobile dust extractor

Nederman wall mounted fume extractor

2: mobile gas fired space heaters

Robur hydraulic pallet truck

8in manual bar cropper on steel base

Norton No. 6 heavy duty fly press mounted
on steel base

Neumatics Industrial vacuum cleaner

Cutlass Clipper mobile stud welding machine
Serial No. 860617
with equipment

2ft x 2ft x 21/2ft steel double key safe

Rosengrens 4 draw vertical fire proof filing cabinet

Stratford 4ft x 2ft x 2ft vertical key firesafe

R & D AREA

Alexander Wright pressure testing vessel

Claude Lyon Limited Regulac variable transformer
mounted on castors

MACHINE SHOP

Jones & Shipman model 540 surface grinder
Serial No. Unavailable
with magnetic chuck, coolant, recirculation and
equipment

Jones & Shipman 1011P surface grinder
Serial No. Unavailable
with magnetic chuck, coolant, recirculation and
equipment

Rex Hacksaw 12in x 6in Toolmaker mechanical
hacksaw
Serial No. TT5S
with coolant and equipment

Brierley model ZB25 drill point grinder
Serial No. 23C8636067

Clarkson 12in x 6in diameter tool and cutter
grinder
Serial No. 11448

Alba type 4S shaper
Serial No. 170318/29
with T slotted box table, machine vice and
equipment

Colchester Mascot SS&SC gap bed centre lathe
20in swing over bed x 80in between centres
Serial No. 7/000405991
with 3 and 4 jaw chucks, Duplex die grinder,
tooling and equipment

Brazing hearth with brazing gun, guards, engineers
vice, motorised fume extraction and associated
equipment

Elliott model U2 universal milling machine
Serial No. Unavailable
with equipment

Colchester Student 6in gap bed centre lathe
Serial No. F2/71196
with equipment

Ajax heavy duty single spindle pillar drill 5/8in capacity
Serial No. 20381B17327
9 speeds, 62-964 rpm, power feed, rise and fall
table, coolant and equipment

PFT vertical turret milling machine
Serial No. F0-159
infinitely variable speeds, 60-4200 rpm, powered
table 50in x 10in, Mitutoyo 2 axis digital read out,
machine vice, coolant and equipment

Fabricated die grinding machine with 1200mm
diameter magnetic chuck

Milford 10in diameter capacity double ended
pedestal grinder

C E Johansson 36in x 24in granite surface table)
Serial No. 263-1985)
)
Manual punch)
)
Sundry loose items throughout including:)
)
Factory furniture)
)
Inspection equipment)
)
Various twist drills, dies and reamers)
)
Hand tools)

WORKS OFFICE

Sundry loose items

STORES AREAS

GOODS INWARDS

Aluminium docking plate

Logitrans hydraulic pallet truck

Zarges 5ft aluminium step ladder

**Pelloby 2 ton 3 axis electric crane mounted
on I beam trolley**

Mobile pipe trolley

Robur hydraulic pallet truck

Steel sack truck

5ft warehouse safety ladder

27 sections of Dexion style bolted parts shelving

13 sections of Dexion style boltless parts shelving

**16 sections of Dexion Speedlock boltless pallet
rack shelving**

7ft mobile steel warehouse safety steps

10ft mobile steel warehouse safety steps

2: stainless steel trolleys

GOODS INWARDS OFFICE

2: double pedestal teak effect office desks)
)
Single pedestal teak effect office desk)
)
4: stainless steel kitchen tables)
)
Boltless steel rack)
)
6ft steel stationery cupboard)
)
Floor fan)
)
Towel dispenser)

Electric heater

5: swivel office chairs

4 drawer filing cabinet

Sundry loose items

3: computer workstations/terminals
(valued elsewhere)

Good Scale GSC-9712 12kg x 2g bench top
digital scale
Serial No. 513

STORES AREA NO. 2

10 sections of Dexion style boltless steel parts
shelving

22 sections of Dexion Speedlock and other boltless
steel pallet rack shelving

4 sections of Dexion bolted parts shelving

9ft aluminium warehouse safety ladders

8ft aluminium step ladders

Aluminium 13 rung ladder

Stainless steel trolley

10ft wooden step ladders

Sundry loose items

Transformer and electrical switch gear
(buildings)

4ft steel warehouse safety ladders

Spares and maintenance equipment in locked area including:)
)
2: toe jacks)
)
4: engineers vices)
)
Pipe threader)
)
Electrical lift control)
)
Set of light guards)
)
Various fire extinguishers)
)
Barrel pump)
)
Light and air fittings and supplies)

GOS electric switch gear
(buildings)

STORES AREA NO. 3

Aluminium docking plate

Steel fork lift extension

7: hydraulic pallet trucks

7ft wooden step ladder)
)
Step stool)
)
Tambour fronted storage cabinet)

27: Dexion style bolted parts shelving

4: sections of boltless steel pallet rack shelving

Various lifting slings chain and lifting gear
located throughout stores area

Tann 11/2ft x 11/2ft x 4ft steel key safe

**SMALL PARTS AND COMPONENT STORAGE
AREA/DESPATCH**

12: boltless steel parts shelves

5: Lin Bin wall racks)
)
10: Bartlett stainless steel trolleys)
)
4: steel trolleys)
)
Dexion bolted rack)
)
Dexion parts organiser/bin)
)
Fitters bench)
)
Wooden trolley)
)
Fitters bench)
)
Step stool)
)
Fire extinguisher)
)
Banding cart with tools)
)
Single pedestal desk)
)
Various swivel chairs and stools)
)
Sundry loose items)

Salter electRomail digital 30kg postage scale

Datatech model 407M 1.5hp industrial shredder
Serial No. 1320942

Computer workstation/terminal
(valued elsewhere)

**FABRICATED STAINLESS STEEL AND PROFILED
STAINLESS STEEL STORES**

26: sections of boltless steel pallet rack shelving

43: sections of 4m boltless steel parts shelving

2: 8ft steel warehouse safety ladders

Double pedestal teak office desk)
)
Steel trolley)
)
7: wooden mobile storage bins)
)
5ft warehouse ladder)
)
Metro 3 tier mobile wire rack)
)
Aluminium 8ft step ladders)
)
Stainless steel trolley)
)
Sundry loose items)

CCE tower personal computer 24X CD Rom
with mouse and keyboard
(fitted with stock software)

STORE

BOC Sabre-Arc PW200 plasma welder
Serial No. 010338
with equipment

Oxford model RT180 mobile arc welder
Serial No. 59330
with equipment

Steel bench with stainless steel top, fitted)
Record No. 5 engineers vice)
)
Ardel 724 pneumatic operated riveting machine)
)
2: stainless steel stepladders)
)
Wooden stepladders)
)
Alloy ladders)
)
Miscellaneous workshop furniture)
)
Sundry loose items)

WORKS OFFICE

Steel framed single pedestal desk)
)
3: steel 4 drawer filing cabinets)
)
Steel 2 door cupboard 72in)
)
2: steel 2 door cupboards 36in)
)
Steel stationery cabinet)
)
Swivel chair)
)
Sundry loose items)

WORKS OFFICE

2: Decision Systems International terminals
(valued elsewhere)

3: double pedestal wooden desks)
)
2: steel 4 drawer filing cabinets)
)
3: steel cupboards)
)
3: chairs)
)
Bookshelf)
)
Sundry loose items)

Sharp model SF-2035 photocopier with automatic
document feed, collator and cabinet trolley
(not currently in use)
(assumed leased)

WORKS OFFICE

3: Decision Systems International terminals
(valued elsewhere)

3: various desks)
)

4: stainless steel tables)
)
4: various chairs)
)
Steel 4 drawer filing cabinet)
)
Electric fan on stand)
)
Good Scale GSC-9712 counting scale 12kg x 2g)
)
Steel rack)
)
Steel 2 door cupboard)
)
Sundry loose items)

FIRST FLOOR

STATIONERY STORE

Contents
(room locked - no access)

GROUND FLOOR

STORES

Bolted angle steel racking)
)
Sundry loose items)

WORKS ENTRANCE

Dataprint time recording clock and 6 card index racks
(assumed rental)

Intruder alarm system
(buildings)

Factory furniture, racking, power tools, hand tools,
air lines, retractable electrical cables, bus bar,
inspection and test equipment, screens, partitions,
portable equipment and sundry loose items located
throughout the Bartlett Limited manufacturing and
stores areas

OFFICE EQUIPMENT AND FURNITURE

GROUND FLOOR SHOWROOM

6: office planters)
)
L shaped ash effect display counter)
)
Mobile magazine rack)
)
3M overhead projector)
)
Nobo overhead projector)
)
Dixons audio-visual overhead projector)
)
5 metre presentation track fitted with 2: whiteboards and flip chart)
)
2: teak effect meeting tables)
)
10: brown upholstered office chairs)
)
Portable colour television)
)
Freestanding flip chart)
)
Sundry loose items)

KITCHEN DISPLAY EQUIPMENT

Williams upright stainless steel industrial refrigerator
Serial No. J29

Williams upright stainless steel industrial freezer
Serial No. J30

1995
Bartlett Harmony 10 single door stainless steel
convection oven mounted on stainless steel base
Serial No. WA 2818/4

1995
Bartlett Harmony 6 single door stainless steel
convection oven
Serial No. WA 2824/5

1995

Bartlett Harmony 6 single door stainless steel
convection oven
Serial No. WA 2824/4
with stainless steel base

Bartlett Yeoman electric eye level grill mounted
on B-Line stainless steel table and riser

Bartlett B-Line stainless steel deep wall sink
and drainer

3 section Bartlett B-Line eye level wall mounted
stainless steel kitchen storage units

6M x 11/2m stainless steel extraction hood with
lights and filters

Stainless steel knee sink
(buildings)

EXECUTIVE DINING ROOM

Reproduction antique oak winder dining table with
claw and ball feet, extension leaf and 13: dining
chairs

L shaped Formica topped fitted storage cupboard
(buildings)

Mobile refrigerated display cabinet mounted
on ash effect storage unit

Cona percolated coffee machine)
)
Cup dispenser)
)
Electric heater)
)
Various crockery, cutlery, glassware)
)
Sundry loose items)
)

(third party property)

KITCHEN

L shaped serving counter with Bain Marie heated
cupboards etc.
(buildings)

Bartlett water boiler

Foster Slimline 90 stainless steel freestanding
freezer

Bartlett Yeoman 2 station electric deep fat fryer

Bartlett electric eye level grill on stainless steel riser
and B-Line stainless steel table

Bartlett Baron 6 ring gas range

Single deep well stainless steel sink unit with
spray nozzle and drainer

Comenda stainless steel dishwasher

3: stainless steel kitchen trolleys with loose
kitchen sundries

Stainless steel knee sink
(buildings)

Bartlett Harmony 6 electric convection oven
mounted on stainless steel base unit

Hobart bench model dough mixer
Serial No. E539

Hobart automatic meat slicer

Bench top scales

Grundybin 20 gallon aluminium floor bin

Foster Slimline 90 upright stainless steel refrigerator

GFE Bartlett model M5G2 water boiler mounted
on steel base unit

2: Bejam upright domestic freezers

3: Bartlett stainless steel prep benches

4: Bartlett stainless steel eye level storage cupboards)
)
Bartlett stainless steel shelf unit)
)
Bartlett B-Line stainless steel double deep wall sink and drawer)
)
Sundry loose items)

3: stainless steel extraction hoods

Cona Conamatic coffee percolator

Various crockery, cutlery, knives, forks, pots, pans
and sundry kitchen utensils
(third party property)

Various food stuffs and cooking oils etc.
(third party property)

STORAGE CUPBOARDS

2: stainless steel trolleys

Various food stuffs and cooking sundries
(third party property)

DINING AREA

Bartlett Options mobile stainless steel heated
counter display

Bartlett mobile cutlery trolley

9: canteen tables)
)
46: blue plastic stacking chairs)
Electric wall clock)
)
5: floral prints)
Mobile tray rack)
)
2: fire extinguishers)
)
Flip top bin)

RECEPTION AREA

Built in custom made curved reception desk with
laminated top and awards display on front panel
(buildings)

9: Spy Vanity Fair portrait prints

6: upholstered reception chairs

Wooden coffee table

Wall clock)
)
Fire extinguisher)
)
Stationery drawer)
)
Blue swivel armchair)
)
Tape dispenser)
)
Electric heater)
)
Sundry loose items)

Pitney Bowes 6200 postage franking machine
(subject to rental agreement)

Wedo digital postage scale

Neopost model 8560 postage franking machine
(subject to rental agreement)

Telephone system cupboard

Toshiba model DKSUE280F Strata DK 280 multi
line digital telephone system with tower personal
computer and desk top personal computer, 2: monitors
switchboard station and telephones located throughout
building and BT NTE 1A wideband control box with
equipment with voice mail and automatic call routing
(subject to lease agreement)

MAIN OPEN PLAN OFFICE

Afco Rex Rotary model 2345 photocopier with
automatic document feed and collator
Serial No. Not available

Decision Data 6760 systems dot matrix printer
with acoustic enclosure
Serial No. 899

Canon Fax B320 plain paper fax machine

Samsung model SF 5500 plain paper fax machine

Dannat Intel Pentium tower personal computer
with 48X CD Rom drive, monitor, keyboard and mouse
(subject to lease)

Hewlett Packard DeskJet 710C bubble jet printer

Philips 505 transcription machine

Intel Pentium tower personal computer with 24X

CD Rom, monitor, keyboard and mouse

Hewlett Packard DeskJet 690C bubble jet printer

Brother model Fax 525DT thermal fax machine

Epson FX 2170 dot matrix invoice printer
Serial No. 002251

Epson FX 2170 dot matrix invoice printer
Serial No. 002255

20: Decision System workstation/terminal)
)
3: televideo workstations/terminals)

Oki Microline 6213 dot matrix invoice printer
Serial No. 7668
(subject to lease)

GBC electric image maker binding machine

Brother CE-600 electronic typewriter
Serial No. 80

Dannat Pentium tower personal computer with 48X CD
Rom, monitor, keyboard and mouse
(subject to lease)

Redundant tower personal computer with equipment

ETS Pentium tower personal computer with Quad
Speed CD Rom drive, monitor, keyboard and mouse
Serial No. 08760045
(subject to hire purchase)

Hewlett Packard DeskJet 600 bubble jet printer
Serial No. CN6271RORX

Oki Microline 591 Elite dot matrix invoice printer
Serial No. 83DA3035183K
(subject to lease)

Dannat tower personal computer with CD Rom,
monitor, keyboard and mouse

Hewlett Packard DeskJet 710C bubble jet printer

Oki Microline dot matrix printer
Serial No. 7673
(subject to lease)

Verifone credit verification machine
(third party property)

Bull Compuprint 7024-TE3 dot matrix systems printer

Sharp model SF-7350 desk top flat bed photocopying
machine
Serial No. 05706653

Samuel Withers & Co. 2ft x 2ft x 21/2ft steel
key safe

Dannat tower personal computer with CD Rom,
monitor, keyboard and mouse
(subject to lease)

Hewlett Packard DeskJet 690C bubble jet printer

Hewlett Packard Scanjet 5P desk top scanner

ETS tower Pentium personal computer with
monitor, keyboard and mouse
(subject to hire purchase)

CCE tower Pentium personal computer with monitor,
keyboard and mouse

Klix Nescafe hot drinks vending machine
Serial No. AX203600
(subject to rental agreement)

Compaq Presario CDS 524 desk top personal computer
with monitor, keyboard and mouse

Canon model LBP-460 laser printer

Dannat tower personal computer with CD Rom
monitor, keyboard and mouse
(subject to lease)

Hewlett Packard DeskJet 710C bubble jet printer

Oki Microline dot matrix printer
Serial No. 7669
(subject to lease)

Equinox model Pentium II tower personal computer)
CAD station with 24X CD Rom drive, Nec Multisync)
XE21 graphics monitor, keyboard and mouse, 320 Ram)
)
Equinox model Pentium II tower personal computer)
CAD station with 24X CD Rom drive, Iiyama 21)
graphics monitor, keyboard and mouse, 320 Ram)
)
Equinox model Pentium II tower personal computer)
CAD station 24X CD Rom drive, Mitsubishi G11TMX)
graphics monitor, keyboard and mouse, 320 meg RAM)
)
Equinox model Pentium II tower personal computer)
CAD station 24X CD Rom drive, Iiyama 21in)
graphics monitor, keyboard and mouse, 320 meg RAM)
)
Equinox model Pentium II tower personal computer)
CAD station 24X CD Rom drive, Philips 21in)
graphics monitor, keyboard and mouse, 320 meg RAM)
)
Equinox model Pentium II tower personal computer)
CAD station 24X CD Rom drive, Brilliance 2110)
graphics monitor, keyboard and mouse, 120 meg RAM)
)
Equinox model Pentium II tower personal computer)
CAD station 24X CD Rom drive, Mitsubishi Diamond)
Plus 200 graphics monitor, keyboard and mouse,)
120 meg RAM)
)
Equinox model Pentium II tower personal computer)
CAD station 24X CD Rom drive, Aydin)
graphics monitor, keyboard and mouse,)
120 meg RAM)
)
Equinox model Pentium II tower personal computer)

CAD station 24X CD Rom drive, Mitsubishi Diamond)
 21in monitor, keyboard and mouse,)
 120 meg RAM)
)
 Server with ETS Pentium tower computer)
)
 Equinox Pentium II tower personal computer)
)
 APC uninterruptible power source router)
)
 2: 14in monitors and keyboards)
 fitted with CAD CAM software)
)
 (subject to finance))

Hewlett Packard DeskJet 6500C colour plotter
 Serial No. ES85105407

Hewlett Packard DeskJet 600 plotter
 Serial No. USB3101941

Hyama high resolution graphics monitor
 (broken)

Various freestanding office fans)
)
 Desk calculators)
)
 Heaters)
)
 Staplers)
)
 Hole punches)
)
 Sundry loose items)

13: L shaped grey laminated computer workstations)
)
 11: grey laminated pedestal units)
)
 7: grey laminated bookcases)
)
 15: teak effect single pedestal desks)
)
 8: teak effect double pedestal desks)
)
 41: swivel typists chairs)
)
 19: teak effect office tables)
)

3: grey laminated office tables)
)
4: steel stationery drawers)
)
9: L shaped teak effect secretarial desk)
)
7: teak effect bookcases)
)
16: teak effect filing cabinets)
)
8: 4 drawer steel filing cabinets)

9 bay file storage system mounted on track

4: tambour fronted steel file storage cupboards

2: 6ft steel stationery cupboards

2: coat hangers

Step stool

Wooden storage cupboard)
)
Desk organisers)
)
Olympus typewriter)
)
Punches, staplers and letter trays)
)
Bartlett stainless steel trolley)
)
Sundry loose items)

MANAGEMENT ACCOUNTING OFFICE

Dannat tower Pentium personal computer with
monitor, keyboard, mouse and modem
(subject to lease)

Hewlett Packard DeskJet 890C bubble jet printer

Single pedestal teak office desk)
)
2: swivel office armchairs)

2: teak effect 2 drawer pedestals

2: teak effect bookcases

2 drawer steel filing cabinet

Freestanding office fan

Sundry loose items

)
)
)
)
)
)
)
)

MEETING ROOM

7ft x 3ft light wooden meeting table with 8 upholstered meeting armchairs

Light wooden matching sideboard unit with glass fronted display

4: 4 drawer filing cabinets

2: computer terminals

2: file hanging trolleys

Single pedestal teak effect office table

Office planter

Typists chair

Sundry loose items

)
)
)
)
)
)
)
)
)
)
)
)

Decision Systems dot matrix printer

DAVID RANE'S OFFICE

Intel Pentium desk top personal computer with monitor, keyboard and mouse

Light wooden round meeting table with 4: chRome upholstered meeting chairs and matching cupboard

Black high back swivel office armchair

)
)

Teak single pedestal office desk)
)
Teak double pedestal office desk)
)
Televideo computer terminal)

Teak effect 2 drawer filing cabinet

COMPUTER ROOM

IBM AS/400e Series file server)
)
Shiva Landrover 8E)
)
2: Accura 56K speak modems)
)
IMPS control box for auto fax facility)
)
(subject to IBM lease))

Comms cabinets including:)
)
3 Com Super Stack II 3300 switch)
)
24 station patch panel power source)
)
Planet Ethernet 10 Base T hub)
)
4: 3 cam Active Star hub)
)
5: 24 port hubs)
)
Cabling)
)
2: cabinets etc.)
)
Cray communications Series KMX 9220 link kito streamer)
)
2: IBM S3-C0584 links)
)
ACC model links)
)
5: BT links)

Various redundant computer equipment including personal computers, monitors, laptops and printers

Minolta Page Pro 18L plain paper printer

Sundry office furniture and equipment

FIRST FLOOR

SIDE OFFICE

2: steel 2 door cupboards)
)
2: steel cabinets)
)
2: steel files)
)
4: steel filing cabinets)
)
Racking)
)
20: chairs)
)
Drawing board)
)
Plans table)
)
Pull down front cupboard)
)
3: disused monitors/personal computers)
)
Wooden veneer desk)
)
Wooden veneer table)

CORRIDOR OFFICE 1

Wooden veneer curved executive office desk with)
2: underfilers and meeting end)
)
Wooden veneer circular table)
)
Wooden veneer cabinet with bookcase)
)
6: upholstered chairs)
)
Hewlett Packard DeskJet 690 printer)
)
Steel 3 drawer filing cabinets)
)
Wooden veneer cabinet)
)
Sundry loose items)

OFFICE 2

Wooden veneer workstation with corner table)
)
Wooden veneer 2 drawer filing cabinet)
)
Wooden veneer credenza)
)
Wooden veneer bookcase)
)
Upholstered chair)
)
2: visitors chairs)
)
Dannat personal computer, monitor and keyboard)
)
Hewlett Packard DeskJet 690C printer)
)
Sundry loose items)

OFFICE 3

Wooden veneer workstation with corner table)
)
Wooden veneer 2 drawer filing cabinet)
)
Wooden veneer bookcase)
)
Upholstered chair)
)
2: visitors chairs)
)
Dannat personal computer with monitor and keyboard)
)
2: Hewlett Packard DeskJet 850C printers)
)
Disused personal computer equipment)

OFFICE 4

Wooden veneer workstation with corner table)
)
Wooden veneer 2 drawer filing cabinet)
)
Wooden veneer table)
)
Wooden veneer bookcase)
)

Upholstered chair)
)
2: visitors chairs)
)
ETS personal computer, monitor and keyboard)
)
Hewlett Packard DeskJet 690C printer)
)
Portable personal computer)

OFFICE 5

Wooden veneer double pedestal desk)
)
Wooden veneer table)
)
Wooden veneer 2 door cabinet)
)
Wooden veneer bookcase unit)
)
Wooden veneer credenza)
)
MTC laptop personal computer)
)
Hewlett Packard DeskJet 690C printer)
)
Vinyl upholstered chair)
)
3: meeting chairs)
)
Sundry loose items)

MEETING ROOM

Wooden veneer meeting table)
)
Wooden veneer credenza)
)
Wooden veneer bookcase)
)
8: upholstered chairs)
)
Sundry loose items)

CORRIDOR

6: wooden veneer 3 drawer filing cabinets)
)
Cona coffee machine)

Refrigerator)
)
Bisley A4 file)
)
Wooden veneer double pedestal desk)
)
Wooden veneer table)
)
Wooden veneer cabinet)
)
Intimus paper shredder)
)
BT fax machine)
)
Dannat personal computer, monitor and keyboard)
)
Fujitsu Print Partner printer)
)
Sharp SF2035 photocopier)

Chiltern Hills water dispenser
(on lease)

OFFICE 6

Steel 2 door cupboard)
)
Wooden veneer filing cabinet)
)
Wooden veneer desk)
)
2: steel 4 drawer filing cabinets)
)
Upholstered chair)
)
2: visitors chairs)
)
Personal computer table)
)
Dannat personal computer, monitor and keyboard)
)
Epson LQ 2170 printer)
)
Wooden veneer bookcase)
)
Sundry loose items)

OFFICE 7

Dark wooden veneer meeting table)
)
10: dark wooden veneer blue upholstered chairs)
)
Wooden veneer credenza)
)
Wooden veneer 2 tier table)
)
Key operated safe)
)
Sundry loose items)

COMPRESSOR HOUSE

Atlas Copco type GA30 packaged screw type air compressor)
Serial No. Unavailable)
)
Atlas Copco type FD100 air dryer)
)
Air Industrial Developments welded mild steel vertical air receiver)
)
Compressed air pipework, filters, fittings and pipework throughout)

STORE

Fluidair Rotapak model RPK135 air compressor
 Serial No. 30306
 (not in use)

YARD

BOC Argon distribution system
 (third party property)

Black Technigas multi stage regulator and equipment

4: waste skips
 (third party property)

Welded mild steel 2 door flammables storage cabinet

Quantity steel stillages)
--------------------------	---

Sundry loose items)

STORE

Fluidair Rotapak type RP4235 packaged air compressor)
Serial No. 40092)

Atlas Copco FD237 air dryer)

(not in use))

Sectional alloy scaffold tower)

Sundry loose items)

STORE

Portable space heater)

Sundry loose items)

BARTLETT CATERING EQUIPMENT LIMITED
BAIRD COURT
PARK FARM INDUSTRIAL ESTATE
WELLINGBOROUGH
NORTHANTS

PLANT AND MACHINERY

BT Rolatruc RT 1600E ride on electric reach truck
Serial No. 217466
(on finance)

Atlas Copco GA18 packaged air compressor)
Serial No. 766175)

Atlas Copco FD40 air cooler)
Serial No. 50888)

Ultrasep Ultrafilter)

Welded mild steel air receiver, pipework throughout

Salvagnini Pluri punch press with loading table
Serial No. FS019100

Suction feeder system, model DVP 2515

Sick light guards

Waste conveyor

Control system

Brush table throughfeed

Roller table outfeed

Salvagnini heat exchanger
Serial No. 92020821

Tooling

Press and Shear Strippit Fabri Centre 1000 punch
press, 20 position turret, Houdaille NC control and
tooling
Serial No. 217.18.79

Trumpf Quicksharp punch press tool lapper
Serial No. Not available

Trumpf Multiset tool setter

Trumpf Quickload tool loader

Trumpf Trumatic 500 CNC punch press type 9089
220 KN punch capacity
Serial No. 041340 (1999)
with Trumpf Sheetmaster Trumalift 8 metre track
suction feeder, 2m x 1.5m
Serial No. 041340

Tooling and cartridges

Stopa 5000kg HSSM-00009 product/waste scissor
lift stacking table
Serial No. 991344
Light guards

Trumagraph CNC system

Computer link system)
)
(subject to hire purchase))

Pedrazzoli 350 pull down saw, infeed/outfeed
conveyors
Serial No. Not available

Norton No. 3 flypress

Edwards Pearson model GS hydraulic guillotine,
PBG 100in x 1/4in capacity
Serial No. 940890338

R.A.S. type 67.25 box pan folder, 2540mm x 3mm
capacity, multibend 2000CNC, take off table
Serial No. 110/40

Press and Shear Strippit Fabri Centre FC 1000 II,
20 position turret Houdaille NC control and tooling
Serial No. 1000.84.43.405

Robur Ergo 800B electric pedestrian stacking truck
Serial No. 9826540398

Grafton bench drill

Test Rite 6in bench grinder

R.S.A. Rasamac Duo twin brush sheet edge deburrer

R.S.A. Rasamac Duo twin brush sheet edge deburrer

Edwards Pearson model SE 100/3100 downstroking
pressbrake, PBG, Euro CNC, Sick light guards
Serial No. 2472

CEA 15 KVA spot welder
Serial No. 46021
with IR15 water chiller

Canning double ended polishing spindle with

•

Mobile welding fume extractor

.

Sureweld Mono Mig 151 welder

Studfast 801 CD stud welder

Studfast 801 CD stud welder

Kempgi Minisystem tig welder model MTLG

Meddings tube drilling machine, 2.5m approx
between centres, indexing collet chuck 6 position
turret head
Heidenhain TNC 131 control

Pollard bench drill

Bridon Fibres Limited Band A Matic auto strapping machine

Avery 210kg platform scale

)

;

;

;

;

1

)

1

;

;

1

13

;

1

1

;

1

:

Mezzanine store area)
)
Nordson hot melt glue machine)
)
Hand electric and pneumatic tools)
)
Sundries)

OFFICE FURNITURE AND EQUIPMENT

RECEPTION

4: upholstered visitors chairs)
)
Marble effect coffee table)
)
Leaflet stand)
)
Sharp SF7750 photocopier)
)
2: steel 4 drawer filing cabinets)
)
Personal computer table)
)
Wooden veneer workstation)
)
Upholstered chair)
)
Sharp UX75 fax machine)
)
Computer terminal)

MANAGERS OFFICE

Wooden veneer 2 door cabinet)
)
Wooden veneer bookcase)
)
Steel 4 drawer filing cabinet)
)
2: steel A4 filers)
)
Personal computer desk)
)
2: wooden veneer tables)
)
Wooden veneer double pedestal desk)
)

2: upholstered chairs)
)
Computer terminal)
)
Tower type personal computer)

GOODS OUT - WAREHOUSE

Computer terminal)
)
Decision System Int invoice printer)
)
Invoice printer)
)
(on lease))

MEETING ROOM

Black ash meeting table)
)
8: upholstered chairs)
)
Black ash 2 door credenza)
)
Black ash bookcase)
)
2: chairs)
)
Intel Pentium personal computer)
(not in use))

FOREMANS OFFICE

Wooden veneer table)
)
Steel tables and cabinet)
)
Wooden veneer desk)
)
2: chairs)
)
Computer terminals)
)
A4 file drawers)
)
Pentium personal computer, monitor and keyboard)
)
Danna personal computer)
)

Fortress UPS)
)
Samsung 700 monitor)
)
Hewlett Packard Deskjet 710C printer)
)
Micravax 3100-30 personal computer with monitor and keyboard)
)
LA75 printer)
)
Wooden veneer plans table)
)
Wooden veneer single pedestal desk)
)
Wooden veneer table)
)
Steel 6ft cupboard)
)
Steel A4 file drawers)
)
2: steel tables/stores)
)
Toshiba Strata telephone system)
)
)
Cray KMX 9220 kilostreamer)
)
Nile ACC modem link)
)
IBM personal computer)
)
Toshiba Strata telephone system)
)
(on lease))

CANTEEN

Philips microwave)
)
Refrigerator)
)
2: wooden veneer tables)
)
7: chairs)
)
Steel table)
)
2: A4 file stores)
)
Sentry portable media fire safe model 6720)

Klix drinks machine
(on lease)

**ALLCARE OFFICES
MAYLANDS AVENUE
HEMEL HEMPSTEAD
HERTS
HP2 7EN**

Admel plans chest)
)
Admel plans chest)
)
Steel plans chest)
)
Wooden veneer plans chest)
)
AM Bruning PD178 plans copier)
)
6: steel 4 drawer filing cabinets)
)
Wooden veneer tables)
)
Wooden veneer desk)
)
7: light wooden veneer workstations with sidefilers)
)
9: wooden veneer bookcases)
)
Steel 2 door 6ft cupboard)
)
Printer table)
)
Panasonic fax machine)
)
Olivetti TLM 810 fax machine)
)
Sharp SF7300 photocopier)
)
Dannat personal computer with monitor and keyboard)
)
Hewlett Packard DeskJet 710C printer)
)
4: computer terminals)
)
Steel 2 drawer filing cabinet)
)
Epson EPL 7500 printer)
)
Sundries throughout offices)

FILE COPY



CERTIFICATE OF THE REGISTRATION OF A MORTGAGE OR CHARGE

Pursuant to section 401(2) of the Companies Act 1985

COMPANY No. 04106869

THE REGISTRAR OF COMPANIES FOR ENGLAND AND WALES HEREBY CERTIFIES THAT A FIXED CHARGE OVER CHATTELS DATED THE 5th JANUARY 2001 AND CREATED BY BARTLETT CATERING EQUIPMENT LIMITED FOR SECURING ALL MONIES DUE OR TO BECOME DUE FROM THE COMPANY (FORMERLY KNOWN AS SUPERBOND LIMITED) TO NMB-HELLER LIMITED AND/OR ANY RECEIVER ON ANY ACCOUNT WHATSOEVER WAS REGISTERED PURSUANT TO CHAPTER 1 PART XII OF THE COMPANIES ACT 1985 ON THE 12th JANUARY 2001.

GIVEN AT COMPANIES HOUSE, CARDIFF THE 15th JANUARY 2001.

LR
P.



THE OFFICIAL SEAL OF THE
REGISTRAR OF COMPANIES



Companies House

— for the record —