

WILTSHIRE ARCHAEOLOGICAL AND NATURAL HISTORY SOCIETY

(Company Limited by Guarantee)

ANNUAL REPORT and FINANCIAL STATEMENTS for the year ended 31 March 2015



FRIDAY

MC

A14 04/12/2015 #105
COMPANIES HOUSE

A13 23/11/2015 #94
COMPANIES HOUSE



WILTSHIRE Archaeological and Natural History Society

(A company limited by guarantee)

Charity Number 1080096 Company Registration Number 3885649

The Wiltshire Archaeological and Natural History Society (the Society, aka WANHS – pronounced 'wans') was founded in 1853. The Society's first permanent Museum opened in Long Street in 1874.

The collections have been acquired over the past century and a half and their strength lies in the prehistoric material. The Early Bronze Age collection is of exceptional importance because of its size and range, the uniqueness of many of the objects, the fact that it includes many prestige items, its association with the World Heritage Site of Avebury and Stonehenge, and its relevance to the history of archaeology. It has now been redisplayed enabling the 'Gold from the Time of Stonehenge' to be put on permanent display.

Each year academic researchers carry out important research on items in the collection. The collections were 'Designated' of national importance in 1999 and the Museum was awarded 'Accreditation' status in 2005.

The Library is open for research and contains a local studies collection of books, journals, newspapers and other printed items including photographs and maps

concerned with Wiltshire. It has a separate archaeology section which includes a general collection of archaeology books, the principle archaeology journals, the papers of Wiltshire antiquaries and the written records of more recent excavations in the county. The Natural History section similarly includes general natural history books, specialist journals and the papers of early natural historians.

The Society and Museum are funded by its members, past and present; admission charges, Wiltshire, Devizes Town and Parish Councils; grants from charitable trusts and fundraising activities.

The Society is governed by Memorandum and Articles of Association (available on request). The objects for which the Society is registered are listed below.

The Society holds an Annual General Meeting in October each year to which all Society members are invited. At this meeting the Annual Report and Accounts for the year ended 31st March are presented for approval and Trustees elected. Past copies are available from our website.

OBJECTS OF THE SOCIETY

The objects for which the Society is registered are to educate the public by promoting, fostering interest in, exploration, research and publication on the archaeology, art, history and natural history of Wiltshire for the public benefit.

To achieve this the Society:

- Maintains a museum, library and art gallery and mounts exhibitions to stimulate and enhance appreciation of the county of Wiltshire.
- Promotes, encourages and undertakes research and publishes newsletters, an annual magazine, reports, periodicals, books and other literature which are relevant to its activities.
- Provides lectures and visits on topics and places of interest, both inside and outside the county, to disseminate greater knowledge and appreciation of our heritage.
- Operates an archaeological field group which encourages members to become involved actively in the current archaeological scene in the county.
- Provides activities for young people to enable them to appreciate and develop their understanding of the local environment and its history (including school visits to the Museum and workshops at schools).

MEMBERSHIP SUBSCRIPTION RATES

at 1 January 2015

Member - £40.50

Joint/Family - £53.00

Student - £22.50

Member Organisation - £47.50

Gold Donor and Amber Membership - £65 and £125

Life (over 50) - £750

Life (under 50) - £1,000

A Corporate membership is available to businesses.

Subscriptions run for 12 months from the first day of the month following that in which you joined.

Student membership is open to individuals enrolled on a full-time accredited course of study, or on a part-time course of higher education leading to a recognised qualification in the areas of the Society's interests.

WILTSHIRE ARCHAEOLOGICAL AND NATURAL HISTORY SOCIETY

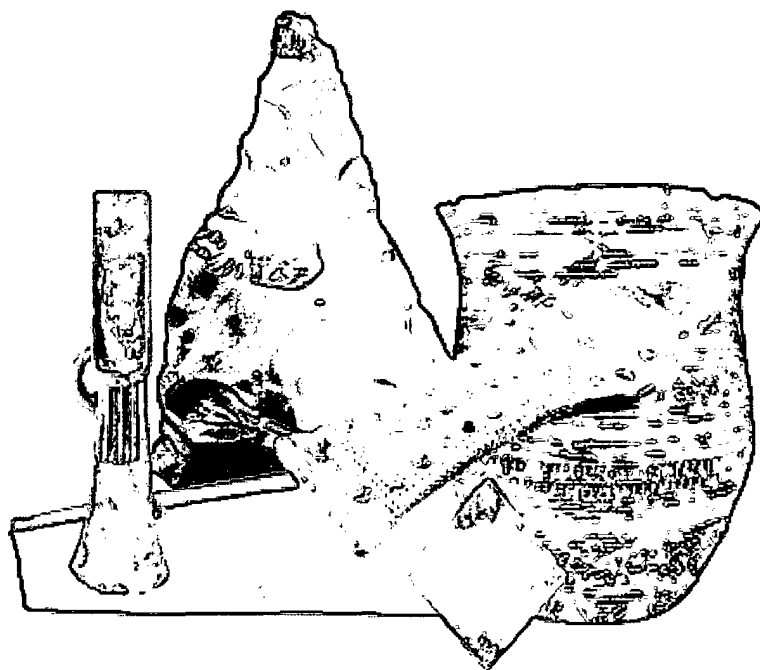
(A company limited by guarantee)

Charity Number 1080096 Company Registration Number 3885649

REPORT AND FINANCIAL STATEMENTS FOR THE YEAR ENDED 31 MARCH 2015

CONTENTS

Legal Information, Board of Trustees, Administrative Information (Staff, Formal and Honorary Appointments, Patrons)	3
Chairman's letter	4
Board of Trustees' Report	4
Year End Review	5
Collection Acquisitions - highlights	9
Loans	11
Researchers	12
Society Committees	13
Volunteers	14
New Members	15
Trustees' Financial Report	17
Report of the Auditors	19
Statement of Financial Activities	20
Balance Sheet	21
Notes to the financial statements	22
Collections Trust – Statement of Financial Activities and Balance Sheet	27
Collections Trust – Notes to the financial activities	27
Minutes of the Annual General Meeting held on 25 October 2014	28



WILTSHIRE ARCHAEOLOGICAL AND NATURAL HISTORY SOCIETY

LEGAL INFORMATION, BOARD OF TRUSTEES, SOCIETY STAFFING AND FORMAL APPOINTMENTS FOR THE YEAR ENDED 31 MARCH 2015

LEGAL INFORMATION

Constitution

Wiltshire Archaeological and Natural History Society (the Society) is a company limited by guarantee, registration number 3885649, governed by its Memorandum and Articles of Association and a charity, registration number 1080096. The members of the Society are subscribing members; in the event of the Society being wound up, the liability in respect of the guarantee is limited to £10 per member.

Directors and Trustees

The directors of the charitable company (the Society) are its Trustees for the purpose of charitable law and throughout the report are referred to collectively as "the Trustees". As set out in the Articles of Association twelve Trustees are elected by the membership, one third of whom retire each year and are eligible for re-election at the Annual General Meeting. In addition up to four Trustees may be nominated, two by Wiltshire Council, and one each by Devizes Town Council, and the Salisbury and South Wiltshire Museum. The Trustees have the power to co-opt three additional Trustees who serve until the end of the next Annual General Meeting at which they may be nominated and elected. The maximum number of Trustees at any time is twenty.

An induction session and other training are provided for all Trustees to familiarise them with the organisation of the Society, its Memorandum and Articles of Association, their legal obligations under company and charitable law, the current forward plan and the financial position and budget. Board meetings are held regularly and additional meetings are held during the year to discuss matters of importance to the Society and to brief Trustees on current strategy.

PATRONS

J B Bush, OBE, JP
P Harding, DUniv, FSA, MIFA
D Inshaw
Mrs S R Troughton

BOARD OF TRUSTEES

Chairman:

D L Roseaman, BSc (Eng), CEng, MIMechE

Deputy Chairman:

P R Saunders, BA (Hons), FSA, FMA, FRSA

Hon. Treasurer:

A Aldridge, BA (Hons), ACMA

Elected Trustees:

C J Bamber, CEng, FIMechE, BSc, CDipAF
R Broadhead
C Callow, BSc, ARCS, MBCS (from 25.10.14)
D J Field, PhD, FSA, FSA Scot
Ms E Gaunt
N B Harte, DSc(Econ), FRHistS, FSA (to 25.10.14)
Ms A M Hemmins, BEd, ACE, Cert.Ed.
WA Perry, MSc
Ms L Pictor, BA (Hons), FRSA. (from 25.10.14)
M G Pope

Nominated Trustees:

P Evans, Member, Wiltshire Council
A X T Green, BA, MA, AMA, Director, Salisbury and South Wiltshire Museum
J Ody, Member Devizes Town Council
C Williams, Member, Wiltshire Council

ADMINISTRATIVE INFORMATION

STAFF AS AT 31.3.2015

Director: David Dawson, BA, FSA, AMA

Museum:

Curator: Lisa Brown*, BA, MA

Assistant Curator & Volunteer Co-ordinator:

Heather Ault*, BA

Learning & Outreach Officer: Ali Rushent*, BA, MA

Learning & Outreach Assistant: Mark Routledge*

Project Officer: Amanda Loaring* (November 2014 to March 2015)

Administration:

Marketing & Administration Manager:

Karen Jones, BA

Finance Officer: Malcolm Church*

Museum Assistant: Jackie Davies*

Publicity Officer: Jo Hutchings*

Retail & Membership Services Officer: Katrin Bailey*

Visitor Services Officer: Claire Homer*

[*part-time]

FORMAL APPOINTMENTS

Auditors:

David Owen & Co., 17 The Market Place, Devizes,
SN10 1BA

Bankers:

Lloyds TSB plc, 38 Market Place, Devizes, SN10 1JD

Company Secretary:

Mrs K P Jones, BA

Solicitors:

Wansbroughs, Northgate House, Devizes, SN10 1JX

Wiltshire Archaeological and Natural History Magazine:

Editor: Prof Andrew Reynolds, BA, PhD, FSA,
FSA Scot., FRHistS (to 31 March 2014)

Editor: Stuart Brookes, BA (Hons), MA, PhD,
PGCTiLL (from 1 April 2014)

REGISTERED OFFICE

41 Long Street
Devizes
Wiltshire.
SN10 1NS

COLLECTIONS TRUST

The Society is the Corporate Trustee of the Collections Trust in which ownership of the Museum and Library collections is vested.

CHAIRMAN'S LETTER

Another successful year for the Society and its Museum began with the visit of HRH The Princess Royal to celebrate the opening of our Prehistory Galleries. During her visit she met funders, supporters, volunteers, trustees and staff.

Two new galleries devoted to Devizes were opened; displays showing the history of the town have long been missing from the Museum. The cases are filled with items that our visitors may remember and can easily associate with. The galleries are proving very popular, not only with local residents, but also with visitors who want to know more about the town. Work also began on a new Saxon Gallery. Behind the scenes staff devoted much time to our application for renewal of Accreditation, awarded by the Arts Council. This is an MOT that looks at our education service, how we manage our collections and how we welcome visitors.

The Society offers considerable public benefit through our Museum, Library and Archive, education service, publications, exhibitions and series of lectures, classes, conferences and visits. Further details will be found in the reports that follow. To give some idea of the reach of our publications the Wiltshire Archaeological and Natural History Magazine - hardly a magazine at 300 pages - is taken by over 100 libraries and organisations worldwide. These range from the Library of Congress, through Universities in the USA and Germany to small local history societies. Provision of free entry to the Museum for children and concessionary rates together with the subsidised education service offered to schools within the county and beyond cost the Society £24,000 pa.

At the beginning of the year the Board agreed to draw down £43,000 from reserves if necessary to meet our charitable objectives. In the event half that was covered by extra fundraising and income. The rise in the value of shares meant that at the year end we had £27,000 available to transfer to reserves. The first time for very many years.

The Board operates at a strategic level but also provides specialist skills in the areas of law, finance and personnel which complement those of the staff. Trustees also help as volunteers on committees and in areas such as fundraising, the agricultural collections and running the Library. In the case of the Library we must particularly thank

Bill Perry and the team of Archive and Library volunteers who have been running it since we have not been able to afford a paid member of staff.

During the year much has been done to improve the governance of the Society.

- Six trustees and the Company Secretary attended a 'How to be an effective Trustee' course.
- Trustees and staff met for an 'away day' to consider our future direction. The outcomes were used by the Director to frame the 2014-19 Strategic Plan.
- The Society's Memorandum and Articles of Association were reviewed; the first time for some years. A number of changes to improve governance and to bring them in line with recent Acts of Parliament were recommended. The new Articles were approved by members at the 2014 AGM. The Charity Commission subsequently approved the changes but asked for one sub clause to be deleted.
- Most Board meetings now include training sessions to improve trustees' knowledge of the Society and Museum. Subjects included 'trustees acting as ambassadors for the organisation' and 'funding methods, requirements, sources and successes'.
- At the request of the Board, the Deputy Chairman, Peter Saunders reviewed the five Society committees that deal with archaeological matters. He concluded, and the Board concurred, that the Stonehenge Committee be wound up and ad hoc working groups formed as necessary. This change was prompted by the retirement of its chairman, Dr Colin Shell, to take up a position representing a wider organisation. Dr Shell had chaired the committee for many years and represented the Society through consultations and public enquiries and the Board expressed its thanks for his hard work. More generally the management of the World Heritage Site is now in the hands of an independent committee on which the Society is represented. The Archaeology Committee is to be replaced with a forum. Gillian Swanton, the former committee's chairman, is thanked for her work over many years. The other committees are to be retained or strengthened.

Doug Roseaman

BOARD OF TRUSTEES' REPORT

The Trustees present their Annual Report, together with the financial statements of the charity, for the year ended 31 March 2015.

The legal and administrative information set out on page 3 forms part of this report. The financial statements comply with current statutory requirements, the Memorandum and Articles of Association and the Statement of Recommended Practice - Accounting and Reporting by Charities.

The Director is the senior member of staff responsible for the ongoing operations in consultation with the Chairman.

The Society committees, all run by volunteers, provide a number of services to members and the wider public. They cover a wide range of activities from Fundraising, Industrial Archaeology through to expert advice on planning matters. Their work helps promote the Society and its Museum to a much wider audience than would otherwise be possible. Reports from committees and staff are included in this report.

YEAR END REVIEW

"Outstanding museum"

★★★★★ Reviewed 31 July 2014

This is how museums should be, interesting, informative and packed with really good exhibits. I know that Wiltshire is overflowing with exciting finds but it is the way that they are shown that makes this place stand out. I just cannot say enough good things about the place so will be quiet and just say "go and see for yourselves"

"One of the best small Museums in Britain."

★★★★★ Reviewed 9 October 2014

Staff here are engaging and extremely helpful. The collection within the museum is well displayed and information regarding the collection is interesting and precise. The staff within the library are amazing! The small admission charge is worth every penny. I would highly recommend this Museum.

Our year got off to a Royal start, with Princess Anne visiting our new Prehistoric Wiltshire Galleries. During her visit she met Trustees, staff and volunteers who have helped make the galleries such a success. She also met Chris Hudson, our designer and John Cooper from Beaufort Bespoke who led the construction. Reaction from our visitors has continued to be very positive, with many comments posted on the TripAdvisor website. The number of visitors has more than doubled and we are now one of the top-rated visitor attractions in Wiltshire on TripAdvisor, with a higher rating than Avebury or Stonehenge. Kerry Nickels, who had worked so hard with us to develop the new galleries, left us in July to move to Florence. Mark Routledge and Jo Hutchings joined us later in the year to develop our educational work and to promote the galleries.

The link with Stonehenge has also led to the Museum featuring in a number of TV programmes, including *Operation Stonehenge* (BBC2 in UK, Smithsonian Channel in US, Canadian Broadcasting Corporation); *Secrets from the Skies* with Bettany Hughes (ITV1) and *Ancient Voices* with Raksha Dave (BBC Learning - now being used by teachers across the country). We have worked hard to encourage primary schools to use the Museum to support their teaching, including launching a Teachers Pack and organising twilight sessions for teachers. This has resulted in a doubling of the number of children using the Museum. Our Saturday Children's Club has continued with visits to the Wansdyke, West Kennet Long Barrow and to see the Archaeology Field Group excavations at a site near Bromham.

We have also welcomed an increasing number of groups to the Museum – including running a 'Walking the Dead' gallery tour with a guided walk in the Stonehenge landscape and giving a Bronze Age themed lunch for a group of VIP supporters of the Museum of London. We have also increased the number of university students, with visits from Southampton, Bristol, Oxford, Cambridge, Manchester and the Institute of Archaeology. We continue to support researchers at all levels who have studied topics as varied as radio-carbon dating Bronze Age log coffin burials, to the reinvestigation of the Romano-British settlement of Verlucio.

Accreditation

A major piece of work undertaken during the year was to submit our application to the Arts Council for Accreditation. This is an 'MOT' for museums that shows we are meeting quality standards in all areas of our work, including collections management, learning and outreach and emergency planning. We have also developed a new strategic plan to guide our development over the next five years.

We submitted our Accreditation application in August 2014 and this was followed up with a verification visit in April 2015. The visit included reviewing policies and procedures, assessing the quality of our work and, most significantly, a collections documentation audit – a spot check to make sure that we properly record the location of the thousands of objects in our collection. The Documentation Project of a few years ago, developed by Bill Perry and implemented by Lisa Brown, ensured that this was successfully completed. Most museums require several days to finish the task. Special mention was made in our Verification Report that we have no documentation backlog; we are one of only a handful of museums across the country to be in this position. Accreditation is important and we must meet the Standard if we are to apply for grant aid from the Arts Council or the Heritage Lottery Fund.



From left: The Director, David Dawson discussing the collections with HRH The Princess Royal; Raksha Dave and Bettany Hughes.



Saxon Gallery

We have also been completing our new gallery – 'Saxons – the Making of the Kingdom of Wessex'. On display for the first time are some of the finds from the Saxon cemeteries at Barrow Clump and Market Lavington. The gallery was designed by Chris Hudson, who also designed the Prehistoric Wiltshire Galleries. Beaufort Bespoke made the display case fittings and mounts and Colour Studios printed the graphic panels. Saxon re-enactor Mark Routledge of Wessex Wildcraft and his friends from Wolfheodenas kindly dressed up to be photographed for the displays. The team of Museum staff responsible for bringing the gallery to completion were Lisa Brown, Karen Jones, David Dawson, Ali Rushent and Heather Ault.

The gallery includes the loan of a King Alfred penny by Nicholas Booth from Salisbury and a Saxon grave marker from Potterne Parochial Parish Council. During the year we have also raised funds to purchase a gold Viking finger ring, found by detectorists in the Stockley area near Calne, which completes the displays. We are now planning a Teacher's Pack to support schools in using the new gallery.

The Wiltshire Council Museums Conservation Service worked with the Curator to conserve and display some of the objects in the Saxon Gallery. We are grateful for their help with this project, but unfortunately from April 2015 this type of support will no longer be available to us. The financial situation now means that most conservation services for museums in Wiltshire can only be provided on a chargeable basis.

Story of Devizes Gallery

Opened in June 2014 this Gallery is an enhanced version of the exhibition held in 2012 and tells the story of the town's history and development. Objects on display relate to the castle and Medieval town, the Battle of Roundway Down and important trades, businesses and families in the town. It also explores themes such as the 18th century prosperity of Devizes and its role at the centre of the county (*image on page 16*).

Archive and Library

The Archivist and Librarian post remains 'frozen' because of the continuing financial situation and the Library continues to be run by our team of dedicated volunteers. Usage of the Library (i.e. visitors plus email, letter and telephone enquiries) during the year averaged around 75 people a month.

Our priority task remains to enter all the holdings on to the computerised database and upload a simplified version of this to the on-line catalogue on the Museum website. Considerable progress has been made on this project during the year, and there are now over 21,000 books and tracts, photographs and documents (including maps and sales catalogues) on the database, many of the photographs accompanied by digital images. We still have many maps, books, tracts and sales catalogues to enter on the database and this work will be ongoing for several years yet.

As we progress through the collections we come across interesting items that we were unaware we held, an example being James Sowerby's *English Botany; or coloured Figures of British Plants*, published in 36 volumes between 1790 and 1813 (for some volumes in co-operation with James Edward Smith). One of the notable books of wild plants it contains over 2500 exquisite hand-coloured drawings by Sowerby - *Conyza Squarrosa* (Plowman's Spikenard) and *Anethum Foeniculum* (Common Fennel) are pictured on page 14. A note inside indicates that the books came to us in 1995 by way of a bequest from Heather Tanner, wife of the engraver Robin, and it is more than likely that he used them as the source for the depictions of wild plants that appear in the foreground of many of his etchings of Wiltshire scenes. The books are therefore an interesting companion to the 100 or so of Tanner's pictures in the art collection.

We continue to add to the collection. Notable new books during the year include *Silbury Hill, the largest prehistoric mound in Europe*, Leary, Field and Campbell; *Celtic Art in Europe: making connections, essays in honour of Vincent Megaw*, Gosden, Crawford, Ulmschneider; *Studies in early Anglo-Saxon art and architecture, papers in honour of Martin G Welch*, Brookes, Harrington, Reynolds; and *Landscapes of Defence in early medieval Europe*, Baker, Brookes, Reynolds. A

From left: Lunch at the Museum for supporters of the Museum of London; cleaning items found at a local excavation; the Maud Cunningham papers; family group image used in the new Saxon gallery.



chance find in a second hand bookshop was Maud Cunnington's personal copy of the report of her excavations at *Woodhenge* in 1926-8. Tucked inside were letters, press cuttings, photos, plans and sections, long thought to be lost. The book was presented to the Museum by Jill Cook, Deputy Keeper at the British Museum. During the year we also published a reproduction of Edward Dore's illustrated 1759 map of Devizes, which is now on sale in the shop (pictured rear cover). Members who responded to our appeal at last year's AGM and in the newsletter for help with conserving John Smith's *Set of Services, Anthems and Psalm Tunes for Country Choirs* from 1748 will be interested to know that thanks to generous financial assistance from the West Gallery Music Association, we have now been able to place a contract for cleaning, repairing and rebinding this rare (only six copies known worldwide) book of 18th century West Gallery music. While the pages are unstitched we shall make a high resolution photographic copy which will enable us to make facsimile reproductions available to anyone interested. The work is likely to take much of this year to complete.

Bill Perry

Archaeological Archives

The lack of storage space for the finds and paper records from developer-funded archaeological excavations continues to be a serious problem. During the year the Wiltshire Core Strategy and the Infrastructure Delivery Plan were approved, which will prioritise the allocation of funding from developers. We are grateful to Wiltshire Council for recognising the need to provide for archaeological storage within the planning system and look forward to concrete progress being made.

Exhibitions

Our exhibition galleries hosted over 600 days of special exhibitions. These included the Oexmann Art Exhibition, Crop Circles and a display to commemorate the centenary of the outbreak of World War 1 - more details below. As part of the commemorations we held a WW1 identification day and the Director laid a wreath at the Menin Gate, in memory of Society members who gave their lives in the Great War and he visited the grave of Edward Cunnington.

Edward was the son of the Society's first museum curator, Ben Cunnington, and the archaeologist, Maud Cunnington. We also lent some objects from our collections to the Soldiers at Stonehenge exhibition displayed at the Stonehenge Visitor Centre.

Exploring the Mystery and Beauty of Crop Circles – June to September 2014. An exhibition of photographs and video explored the mystery and beauty of Crop Circles. The multi-media exhibition was compiled and curated by Monique Klinkenbergh from the Crop Circle Access Centre, together with long term crop circle researcher Andreas Müller.

Devizes and the Great War – September 2014 to February 2015. The exhibition opened on 13 September, marking the centenary of the death of William Lee, the first soldier from Devizes to be killed. On display were graphic panels produced by Richard Broadhead, a mixture of objects from the Museum, Archive and Library collections, and a number of items on loan from members of the public.

The loans included a rare 'Soldier Bear'. A mascot bear, about 3.5 inches tall, it would have been hidden in the pocket or kit bag of a soldier on his way to the trenches. They were keepsakes and a reminder of home to the men experiencing the horrors of war. A loan from Mrs Oke of Devizes.

The Museum received an enthusiastic response to the appeal to give the Soldier Bear a name. The competition was launched in the *Gazette & Herald* on Christmas Eve and then picked up in the New Year by *BBC Radio Wiltshire*, whose listeners sent in many suggestions after hearing the Curator interviewed by Sue Davies. The bear's owner, Mrs Oke, chose the name Albert, suggested by Stephen Hackett from Salisbury. The 2nd Wiltshire Regiment saw action during the Battle of Albert, as part of the Somme offensive in the summer of 1916. In French, Albert is, of course, pronounced 'Al-bear'.

From left: YPRES 1914-16 souvenir brooch; Albert, a World War 1 Soldier Bear; the Director, David Dawson remembering Edward Cunnington.



Oexmann Art Competition – March to May 2015.
March 2015 saw the launch of the fourteenth Oexmann Biennial Art Competition.

Created to commemorate the late Theophila Joan Oexmann, the competition is open to entrants born or living in Wiltshire and aims to encourage and promote artists from the county.

All entries were judged by a panel of experienced locally-based artists: Mitch Griffiths, David Inshaw and James Saxton and this year saw a good number of entrants both in the adult and young persons' categories.

The Prize winners were as follows:

Adults:

1st Prize - £500: Sandra Wrobel 'The Fallen Tree'

2nd Prize - £300: Marie Hillcoat 'Light Study'

Purchase Prize - £200: Martin Covington 'On Salisbury Plain' and 'Little Thatch'

Drawing Prize £50: Jane Le Coyte 'Rob'

Young Persons, 6 – 11

1st Prize - £50: Emma Blunden 'Wiltshire Sunset'

2nd Prize - £30: Toby Hope 'Westbury White Horse'

Young Persons, 12 – 18

1st Prize - £75: Isabella Bradley-Leech 'Leopard'

2nd Prize - £40: Georgina Jones '48626189 (Humanity)'

A busy and successful Prize Giving was held on Saturday 28 March and prizes were awarded by Artist and long-term friend of the Oexmann family Genevora Searight. The competition will be held again in March 2017.

Lectures and Events

We have maintained a busy events and exhibition programme, running 130 workshops and 105 seminars, visits or lectures during the year – an average of 4 events per week. These included a visit to Boles Barrow led by Roy Canham, a visit to the Barrow Clump Saxon cemetery, led by Phil Andrews of Wessex Archaeology and a visit to the Ancient Technology Centre in Dorset. Our busy lecture programme included talks on Saxons and Britons in Wessex, the Roman Army and the Ancient Technology Centre. Bob Clarke taught a popular evening class about the impact of the Cold War. We are grateful to

all our speakers and guides for their support in helping deliver such a popular and wide-ranging programme (see page 16 for details).

Projects

We had two grant awards from the Arts Council, one supporting the Wessex Museums Partnership, where we have worked in partnership with Dorset County Museum and Salisbury Museum. This included building a partnership with the Wiltshire Wildlife Trust to plan the development of a new environment gallery and the *Wiltshire's Story in 100 Objects* touring exhibition, curated by our Project Officer Amanda Loaring. The Wessex Partnership now includes the Russell-Cotes Art Gallery and Museum and Poole Museum. Together, we have been awarded £450,000 by the Arts Council to develop our fundraising and exhibition programming over the next two years.

Tourism

During the year we have been working as part of the Devizes Area Tourism Partnership to increase the number of visitors to Devizes and to the Museum. In May Devizes was presented with Coach Friendly status and a range of events were organised for English Tourism Week, to highlight the tourism potential within Devizes. The Museum plays a significant part in tourism - a methodology developed by the Association of Independent Museum shows that the Museum generates over £500,000 for the local economy each year.

Volunteers

The Museum and Society could not operate without the fantastic support of our team of volunteers. Their wide ranging roles include welcoming our visitors, helping with holiday activities, running storytelling sessions, giving talks, helping with building and garden maintenance, acting as trustees, recording our collections and helping researchers. We are very grateful to all of those who give their time so generously.

It is also encouraging to hear how some of our volunteers benefit too. Whether it is making new friends or developing an interest, or sometimes in developing their careers. Some of the younger people who have worked with us have used the experience to help them in progressing their university career or to gain that all-important first job in the sector.

From left: Oexmann Prize-winners: First Prize - 'The Fallen Tree', Sandra Wrobel; Drawing Prize - 'Rob', Jane le Coyte; First Prize Young Persons 6-11 - 'Wiltshire Sunset', Emma Blunden



ACQUISITIONS HIGHLIGHTS

There were many additions to the collections this year. A detailed list can be found in the *Wiltshire Archaeological and Natural History Society Magazine* (volume 108, 2015), but below are some of the highlights.

ARCHAEOLOGY

Acquisition Of The Year! Early Bronze Age gold sun-disc. A rare and exciting object from Jug's Grave, Farleigh Wick, Monkton Farleigh, found during excavations by Guy Underwood in 1947. A bequest from the Trustees of the Estate of Denis Whitehead. The sun disc is now on display in the Prehistoric Wiltshire Galleries, along with a similar disc found in the parish of Mere in the 19th century. Only six sun discs have been found in the UK (2015.6), pictured front cover.

Roman silver finger-ring. The engraved image on the rectangular bezel shows two birds with fruit and foliage. Dating to the 4th century AD and found in the Kennet area (2014.7).

Late Bronze Age gold plated penannular ring. Possibly an early form of currency, or worn as a hair ornament. Dating to 1150 - 750 BC and found in the Marlborough area (2014.8).

Iron Age gold strip fragment. Decorated with a flower, next to one of the petals is a central perforation, suggesting that the strip was once secured to something made of wood or leather. Dating to 250 - 50 BC and found in the Marlborough area (2014.9).

Roman gold finger-ring with a red oval garnet setting. The garnet is decorated with a thyrus (staff of giant fennel) and ribbons, behind a man's head. Dating to the late 3rd century AD and found in Fyfield (2014.10).

Roman copper-alloy coin hoard. 465 coins, with 16 additional stray coins, scattered over a large area. The coins from Valerian (AD 253-60) to the Tetric (AD 293-310) seem to form a discrete group, with the coins of Carausius (AD 286-93) regarded as part of the same hoard. Found in the Marlborough area (2015.4) - not pictured.

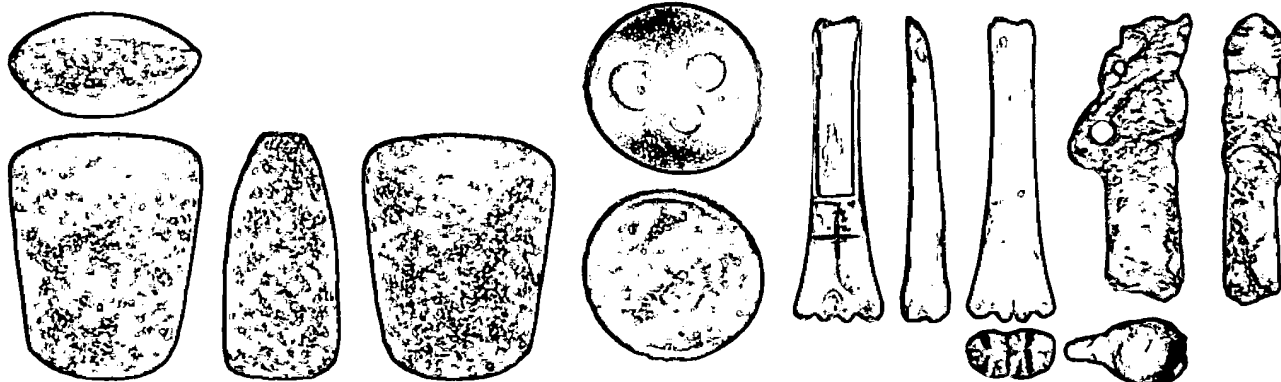
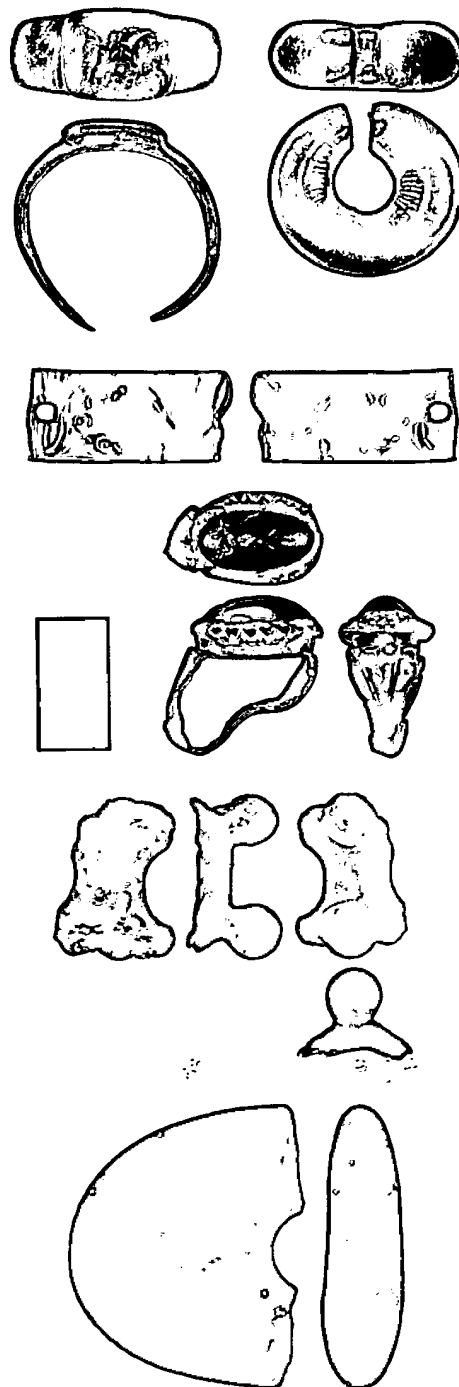
These objects were acquired through the Portable Antiquities Scheme (Treasure Act 1996) and purchased using a legacy left to the Collections Trust by Den Shelton (2014.7-10 and 2015.4).

Roman dodecahedron fragment. Not many of these have been found in Britain and their function remains uncertain, perhaps a surveying instrument, candle holder, sceptre head or polygonal dice. Dating to 100 - 300 AD and found near Devizes. Kindly donated by Norman Merritt (2014.11).

Mesolithic stone macehead fragment. Made from a smooth quartzite pebble and probably used as a pebble hammer. Dating to c. 8500 BC and found in Grittleton (2015.2.1).

Pictured below from left: Neolithic greenstone axehead fragment (2015.2.2); Roman glass gaming counter (2015.2.3); Post medieval apple corer (2015.2.4); Anglo-Scandinavian copper alloy prick spur fragment (2015.5)

Pictured from top: left - Roman silver finger-ring (2014.7); right - Late Bronze Age gold plated penannular ring (2014.8); Iron Age gold strip fragment (2014.9); Roman gold finger-ring with a red oval garnet setting (2014.10); Roman dodecahedron fragment (2014.11); Mesolithic stone macehead fragment (2015.2.1)



Neolithic greenstone axehead fragment

The butt-end of the axehead was broken off in antiquity and the remaining piece was reused as a hammerstone. Dating to 4000 - 2500 BC and found in Luckington (2015.2.2).

Roman glass gaming counter. Dating to 43-410 AD and found in North Wraxall (2015.2.3).

Post medieval apple corer. Made from the long bone of a sheep. Dating to 1600 -1900 AD and found in Hullavington (2015.2.4).

The four items above (2015.2.1 to 2015.2.4) were all kindly donated by Mr Fry of Chippenham.

Anglo-Scandinavian copper alloy prick spur fragment. A rare find for Wiltshire, the spur is decorated with a beast's head with elongated eyes, long ears and an open mouth. Dating to 1050 – 1125 AD and found in Everleigh. Kindly donated by Mr Barrett of Pewsey (2015.5).

ART

The art collection was fortunate this year to receive some excellent donations including:

Devizes Castle, framed print of site, after Stukeley, 212mm (h) x 353 mm (w). Donated by Michael Midgley (2014.1117).

View in Silver Street, Salisbury, framed engraving, after John Britton, 268 mm (h) x 205 mm (w). Donated by Michael Midgley (2014.1118).

Prospect of Marlborough from the South, framed print, after Stukeley, 212 mm (h) x 357 mm (w). Donated by Michael Midgley (2014.1119).

Silbury Hill, pencil sketch by Frank Griffith, 284 mm (h) x 2332 mm (w). Donated by Brian Edwards (2014.1120).

After 11.00 pm, Please Ring the Bell, framed print, depicting hospital buildings from the former Roundway Hospital Site, Devizes. The name of the artist is not known, but the picture is signed 'Bowyer'. Dated 7 March 1996. 253 mm (h) x 350 mm (w). Donated by Mrs Johnson (2014.1121).

Internal view of window detail at the former Roundway Hospital site, Devizes framed print. The name of the artist is not known, but the picture is signed 'Bowyer'. Dated 11 March 1996. 343 mm (h) x 243 mm (w). Donated by Mrs Johnson (2014.1122).

Stonehenge, watercolour by G. T. Miller, signed and dated 11 June 1915. 224 mm (h) x 284 mm (w). Donated by Brian Edwards (2014.1124).

Henge Christmas, pencil, ink and watercolour drawing by John Girvan. Used as a design for one of the Wiltshire Archaeology and Natural History Society Christmas cards 2014. 210 mm (h) x 296 mm (w). Donated by John Girvan (2014.1125).

RECENT HISTORY

Ypres 1914-16 souvenir brooch. Given to the wives and girlfriends of soldiers fighting in the First World War. Found during a house clearance in Devizes. Kindly donated by Mrs Mahoney of Devizes (2014.19).

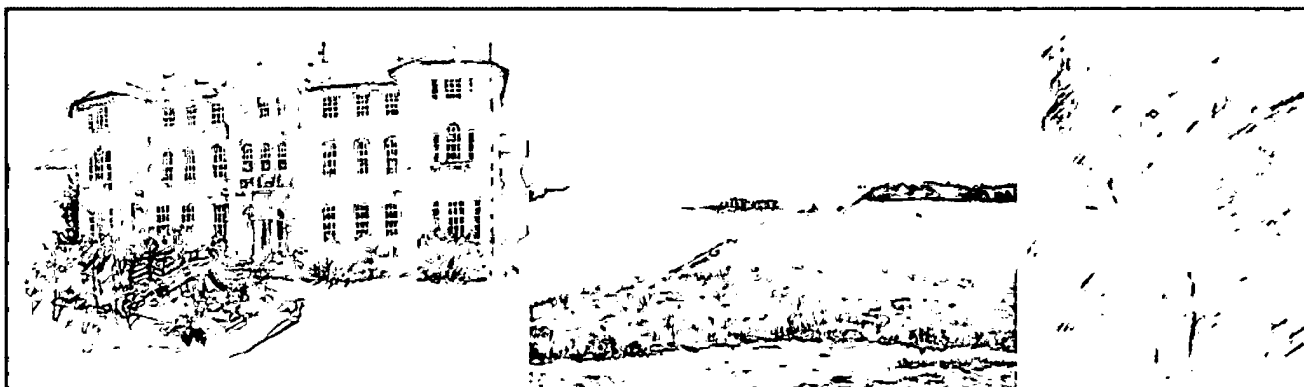
Friendly Society banner in red, green and silver silk COURT CROWOOD No. 4644 A.O.F (Ancient Order of the Foresters) RAMSBURY: OUR AIM IS TO RELIEVE DISTRESS. Hand painted with a picture of a man in military uniform, a woman and a child, all in Victorian dress. An angel stands next to a grave stone. The banner is 4 metres wide and is secured on a wooden pole. A tassel fringe runs along the bottom, above which is written UNITAS BENEVOLENTIA ET CONCORDIA (Unity, Benevolence & Concord). The manufacturer's tags are sewn on to the silk: G TUTIL 1883. LONDON. Kindly donated by Mrs Sprules of Marlborough (2014.22).

Death plaques for John William Clarke and John Edwin Derbridge. Sometimes called the 'soldiers penny', a plaque was sent to the family of every Commonwealth man or woman who died during the First World War (2015.3.1-2).

Dagger or short sword with scabbard, brought back from the First World War by the donors uncle (2015.3.3). Kindly donated by Mr Fleming of Devizes.

Go to www.wiltshiremuseum.org.uk/collections/ for more information about items in the collection.

From left: 'After 11.00pm, Please ring the Bell' (2014.1121); 'Stonehenge' (2014.1124); 'Silbury Hill' (2014.1120)



LOANS

- **Early Medieval silver penny of Alfred.** Dating to c.890 AD and probably minted in Winchester, the penny was found in Salisbury. On loan from Nicholas Booth of Salisbury (2015.1). On display in the new Saxon Gallery.
- **Late Anglo-Saxon grave-marker.** A small rectangular slab of Bath stone with a cross carved in deep relief. Dating to the 11th century AD and from Mary's Church in Potterne. The marker was possibly found during the 19th century restoration of the church, or at any time when a grave was dug either in the church or in the churchyard. On loan from Parochial Council of St Mary's Church, Potterne (2015.7). On display in the new Saxon Gallery.
- **Mistle Thrush, oil on canvas, by David Inshaw.** On loan from Darren Adkinson, U.S.A (2014.1123). On display with other David Inshaw pictures in the Museum.
- Also on loan to the Museum (but not on display), is a **barrel organ from All Saint's Church in Norton**, near Malmesbury. The organ was made by Theodore Charles Bates of London, c.1850 and purchased second-hand by Canon John Edward Jackson in 1863, from John Hanks, the organist at Malmesbury Abbey. It remained in use at Norton Church until 1910, when it was fixed to the south wall as an exhibit. The decision to accept the loan was taken because the organ is made by an important organ builder and it has a direct connection to Canon

J E Jackson, one of the founding fathers of WANHS and Norton resident. On loan from the Norton Church Parochial Church Council (2014.12) - pictured left.

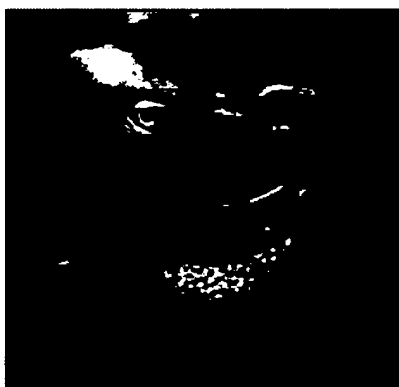


Loans to other institutions:

- A number of items, including the 1915 sale catalogue for Stonehenge and objects from an excavation and fieldwalking at Chisledon and the prisoner of war camp and airfield at Yatesbury, for a display about Stonehenge and the First World War at the Stonehenge Visitor Centre. *English Heritage (now Historic England)*.
- Bronze Age collared urn from Wimbourne St Giles Barrow 3, for display in the new Wessex Gallery, *Salisbury Museum*.
- 19th century friendly society silk banner for the Wiltshire Working Men's Conservative Benefit Society and some medieval floor tiles, for an exhibition entitled 'Dusty Feet'. *The Young Gallery, Salisbury Library*.
- Stuffed bustard specimen for display at County Hall in Trowbridge. *Wiltshire Council*.
- A number of objects, including a thatcher's wooden legget, scythe, pitchfork and milking stool from the Wiltshire Life Society Collection, for display in an agricultural exhibition at West Barn, Barton Farm, Bradford-on-Avon. *Bradford-on-Avon Preservation Trust*.
- Objects including pottery, stone and tile from the Ludgershall Castle excavation, for an exhibition entitled, 'Magna Carta - Game of Barons', celebrating medieval life, warfare, weapons and Sir Henry de Bohun. *Trowbridge Museum*.

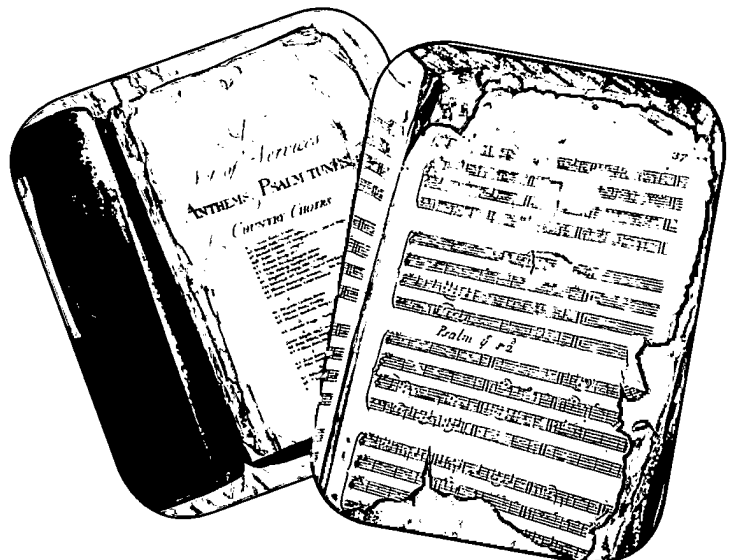
Contributions from David Dawson, Heather Ault, Karen Jones and Lisa Brown.

Below from left: 'Mistle Thrush' by David Inshaw (2014.1123); Early Medieval silver penny of Alfred (2015.1); Henge Christmas by John Girvan (2014.1125)



RESEARCHERS

- Gemma Allerton, Buckingham University. Archaeology of the Stonehenge landscape, researching the Romans at Stonehenge.
- Emily Banfield, Leicester University. Analysis of animal bones found inside Bishops Cannings long barrow G76, on the Beckhampton road.
- Martyn Barber, English Heritage. Researching A D Passmore, Neolithic long barrows, the stone circle at Coate and Devil's Den.
- Richard Bennett, Exeter University. Researching the Anglo-Saxon shield bosses and fittings from the Blacknall Field and Market Lavington cemeteries.
- Dr Richard Brunning and Dr Andrew Jones, Southampton University. Milton Lilbourne G4 burial, radiocarbon dating Bronze Age log coffin burials across England.
- Dawn Cansfield, Winchester University. Analysis of Neolithic human remains, researching early Neolithic mortuary practices.
- Michael Charlton, University College London. Iron smelting slag, building a database of slag chemistry for the British Iron Age.
- Claire Copper, Bradford University. Studying Bronze Age accessory vessels and miniature cups.
- Naomi Field, Prospect Archaeology. Roman sites found at Chippenham, comparing the pottery and ceramic building material.
- Dr Elizabeth M Foulds, Durham University. Pen drawings of Swallowcliffe Down by R C C Clay for publication.
- Abby George, Avon Archaeology Limited. Examination of the lithics excavated by Isobel Smith and John Evans in 1967 at Oliver's Field, Cherhill.
- Dr Robert Hosfield, Reading University. Examination of the stone tools from the lower Palaeolithic site at Knowle Farm, Little Bedwyn, to interpret the gloss found on some of the artefacts.
- Holly Hunt-Watts, Exeter University. Analysis of the human remains from a Bronze Age burial at Ogbourne St Andrew.
- Sophie Keepence, Winchester University. A study of museums and their presentation of archaeology to the public.
- Peter Leeming, Exeter University. Researching fossils found on archaeological sites in the Neolithic and Bronze of Britain and Ireland.
- Stella Maddock, WANHS Archaeology Field Group. Excavation of Mother Anthony's Well.
- Annalise Matthews, Nottingham University. Examination of cat remains found at Budbury Iron Age Hillfort, researching the domestication of cats in Britain.
- Isobel McDermott, Winchester University. Comparison of Neolithic deposit finds from the area around Stonehenge and Avebury.
- Jane Randall, Bristol University. Analysis of Iron Age haematite coated pottery, investigating the distribution and composition of the pottery found in the Vale of Pewsey and Isle of Purbeck.
- Guy Richards. Studying military history, 1780-1815.
- David Roberts, English Heritage. Reassessing the Romano-British settlement of Verlucio and its environs.
- Dr Paul Robinson. The Urchfont hoard of Iron Age coins, for publication in the *Wiltshire Archaeological & Natural History Magazine*.
- Peter Saunders, Salisbury Museum. Examination of the Anglo-Saxon girdle-hanger and bracelet found at Shrewton Windmill. For publication in the *Wiltshire Archaeological & Natural History Magazine*.
- Derek Scorgie, Bristol University. Assessing the defensive nature of Iron Age Hillforts in the Wylve Valley.
- Dr Abbie Sprague, researching a possible 'lost' Stonehenge watercolour by the artist John William Inchbold.
- Andrew Welton, University of Florida. Researching the types of spearheads found at the Anglo-Saxon cemeteries of Blacknall Field and Market Lavington.
- Neil Wilkin, British Museum. Researching Bronze Age food vessels.
- Sara Wilson, Reading University. The Roman tile kiln at Minety, researching the production and distribution of Roman ceramic building material.
- Andrew Wishart, Birmingham University. Studying Bronze Age weaponry.
- Elizabeth Wright, Sheffield University. Animal bone from the midden site at Potterne, studying animal movement in British prehistory.



As a result of donations and a grant our copy of the 'Services, Anthems and Psalm Tunes for Country Choirs' (1748) by John Smith of Market Lavington will be cleaned, repaired and rebound. During this process a high resolution copy will be made.

SOCIETY COMMITTEES

Buildings and Monuments

The Committee has been strengthened with additional members with additional skills enabling individuals to pre-review a sector of the County's applications before the meetings, improving the efficiency of the review process.

The Committee reviewed 106 listed building consents, making responses on 22 (as the statutory consultee for the CBA and WANHS) to Wiltshire Council. With few exceptions the responses were in line with the final decision or applied conditions of approval.

The Committee made further responses regarding an appeal for a particular application (started in 2012) following the National Planning Inspectorate agreeing with the Committee's stance to save an important listed building. This resulted in the owners being instructed to carry out protective works to the listed structure. This result justified the many hours liaising with the various bodies and cleared the complaint logged with the CBA by the appellant.

The quality of applications has improved significantly where applicants use the pre-application consultation service facility with Wiltshire Council.

John Baumber, Chairman

Fundraising, Marketing and Membership

The committee and helpers attended the five main events in and around Devizes with a stall and tombola. A sale and coffee morning were also held at the Museum. Apart from raising very useful amounts of money these events allow us to meet a large number of local people, many of whom may not have visited the Museum since their childhood.

The biennial raffle and associated appeal raised nearly £2,300. This was an excellent result and is three times as good as other local charities. We are very grateful to our members for their continuing support.

The Committee is also responsible each year for checking subscription rates and making recommendations for any changes to the Board. For the third year in a row the Committee concluded that the rates should not be changed.

Doug Roseaman, Chairman

Industrial Archaeology

At the request of attendees at our biennial Symposia the committee organised an additional conference this year. The theme chosen was 'Railways' and we were able to assemble a day of talks with well known and knowledgeable speakers. Around 100 people came and the feedback has been excellent. Work began on the 2015 Symposium which, as usual, will feature a range of topics. The committee continues to work with many other organisations and private individuals throughout the county and beyond who have an interest in Wiltshire's Industrial Archaeology.

Doug Roseaman, Committee Secretary

Wiltshire Archaeology Field Group (WAFG)

The Archaeology Field Group ran a wide variety of projects during the year. This has included a project run with Broad Town Archaeology that has been excavating medieval foundations at Bincknoll which may be the site of a medieval chapel.

The largest project were excavations at a site near Bromham which provided dating evidence for a range of features including prehistoric and Roman enclosures and a possible Roman trackway.

In October members attended the BBC Wiltshire History Day, which provided an opportunity to promote the group and to show some of the work being undertaken in surveying evidence for the Civil War across Wiltshire. Surveys were undertaken in Malmesbury, Marlborough, Rowde and Devizes and discovered significant new information and provided the opportunity to use a range of new photographic techniques.

David Dawson

Below from left: Archaeology Field Group activities



VOLUNTEERS

Mrs L Baker
 Mr Nicholas Baring
 Miss Heather Bechler
 Dr J D & Mrs J Belt
 Mrs Astrid Bleich
 Mr David Borrie
 Mrs P Brazier
 Mr R Brindle
 Miss Angi Britten
 Ms Jan Bryant
 Mr Roy Canham
 Lt Col Colvin Chamberlain
 Dr John Chandler
 Mrs Janice Chapman
 Mr Micky Chick
 Mr Robert Clarke
 Mrs Margaret R Clarke
 Mrs Nicky Clarke
 Mrs Jenny Collis
 Ms Clare Conybeare
 Mr Michael Cornwell
 Mrs Jean Covington
 Mr Alan Cowley
 Mrs Sarah Cowley
 Mrs Kathryn Cox
 Mr Brian K Davison
 Mrs Catherine Dawson
 Mr R A Dewhurst
 Miss J A Drew
 Mrs Susan Eborn
 Miss Emma Elton
 Ms Lynne Farrow
 Mrs Pauline Ferguson
 Mrs Rachel Fitter
 Mr Michael Fletcher
 Mrs Joy Francis
 Mrs Joan Friend
 Mr John Ford
 Mr Steven Froud
 Miss Jennifer Galloway
 Mrs Wendy Gallop
 Mrs Isobel Geddes
 Mr John Girvan
 Mr Peter Goodhugh
 Rev Dr J W F Gosling
 Mr John Greenwood
 Mr Jim Gunter
 Mrs Sarah Harris
 Mrs Sandy Haynes

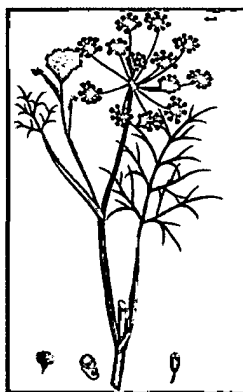
Mr K Hatchman
 Mr Alfred Hawkins
 Mr C & Mrs D Henderson
 Mr William Henderson
 Mrs Sonja Heywood
 Mr Steven Hobbs
 Mr John Howard
 Mr Frank Howells
 Mr & Mrs M J Hudson
 Mr M Huntley
 Mr Jonathan Hurwitt
 Mrs Shelagh Hurwitt
 Mr Tony & Mrs Carole Jones
 Mrs Marilyn Jude
 Mr Dallas Kendall
 Dr Gillian Kenny
 Mr Brian & Mrs Ann King
 Mrs Val Knowles
 Mr J W Lambert
 Mr Arthur & Mrs Wendy Lansdown
 Mr Graham Lever
 Mrs Marlene Lewis
 Mr Mike McQueen
 Ms Stella Maddock
 Mrs Adrienne Massey
 Mrs Heather McDonald
 Prof & Mrs S McGrail
 Mr & Mrs McGrath
 Mrs Joyce McMurray
 Mrs Margaret Melsom
 Mr Peter Melsom
 Mr Dan Miles
 Mr Tim & Mrs Ruth Miles
 Ms Philippa Morgan
 Mr Tony Morton
 Mrs Christine Mudge
 Mr Philip Nokes
 Mr Martin Nye
 Mr & Mrs B D Oram
 Miss E A Paddon
 Mr R W Parrack
 Mrs Dilys Peacock
 Miss Annabel Penny
 Mr David Pollard
 Mr Dennis Powney
 Mrs Angela Prophet
 Mr M Ramsay
 Mr Stuart Raymond

Miss Katherine Reed
 Mrs Mary Rennie
 Mrs Dorothy Robertson
 Dr Paul & Mrs Diane Robinson
 Mrs Doris Roddham
 Mrs Sue Roderick
 Mrs Judith Roseaman
 Mr Rick & Mrs Marion Rowland
 Mr Jonathan Sanigar
 Ms Sandie Scott
 Dr Colin Shell
 Mrs Brenda Short
 Mrs Pamela Slocombe
 Mr Mike & Mrs Anne Smith
 Mr Peter Smith
 Mrs Wendy Smith
 Mrs Penny Spink, MBE
 Ms Christina Staff
 Mr Mike Stone
 Mrs Gill Swanton
 Mr Philip Taverner
 Mrs Alison Taylor
 Mr Michael & Mrs Sue Teale
 Mr Colin Thomas
 Mr Peter Tolhurst
 Mrs Judith Triggs
 Mrs Marianne Walker
 Mrs Maggie Watts
 Mrs Barbara Welfare
 Mrs Wendy Weller
 Mr D West
 Miss Harriet Wheeler
 Ms Katy Whitaker
 Mrs Lucy Whitcher
 Mr M R Williams
 Mrs Edwina Woodcroft

Youth Panel

Jasmine Attwood
 Thomas Coleman
 Abbie Cowley
 Joseph Fishlock
 Matthew Larkey
 Jack McKay
 Alice Ponder
 Kiera Riordan
 Piers Riordan
 Chloe Scott
 Harry Thomas

From left: 'The Wicket Gate', Robin Tanner (1978); 'Anethum Foeniculum (Common Fennel); Conyza Squarrosa (Plowman's Spikenard) both from James Sowerby's *English Botany*; or coloured *Figures of British Plants*; Weeds, Robin Tanner (1978)



NEW MEMBERS 2014/15

Miss G Allerton, Salisbury
Mr D Baker, Chippenham
Miss J Balaam, Marlborough
Mr K Bark-Williams, Devizes
Mr P Bond, Bath
Mr P D Briggs and Family, Bristol
Mr P Burnely, Southrange, USA
Dr C J Carey and Family, Melksham
Mr J and Mrs J Carter, Devizes
Mr M Colyer and Mrs J Brinkworth, Devizes
Mrs C Crilly, Swindon
Mr K Curtis & Mrs A Prophet, Devizes
Mrs S Darby, Melksham
Mrs A Davey and Mr S Healey, Devizes
Mr P Derwent, Salisbury
Discovery Records Ltd, Devizes
Mr T Edwards & Partner, Pewsey
Miss J Evans & Mr M Brown, Westbury
The Barclay Family, Marlborough
Mr R and Mrs S Firm, Devizes
Ms V Forward, Swindon
Mr J and Mrs J Goatman, Devizes
Mrs C P Godwin, Isle of Lewis
Mr D J Godwin, Isle of Lewis
Mrs S Grier, Bradford on Avon
Ms N Heenan, Malmesbury
Ms J Hillier, Devizes
Dr T E and Dr J C Hollway, Devizes
Mr T L Knight, Melksham
Mr K Lacey and Mrs J Warr, Trowbridge
Mr G and Mrs J Lever, Westbury
Mrs and Mr R S Maltby, Malmesbury
Mrs C A Martin, Devizes
Ms B Mason and Mr J Hazell, Chippenham
Mr S and Mrs N McNulty, Southampton
Ms R McVitie, Marlborough
Mr M Norton, Codford
Mr D and Mrs L Parr, Malmesbury
Mr N A Phillips, Marlborough
Miss H Randall-Morris, Trowbridge
Mrs C H Robertson, Market Lavington
Mr D Saunders, Rutland
Mr R Simmons, Pewsey
Mr J Steward, Swindon
Mr C R Style and Partner, Shrewton
Mr I Styler, Westbury On Severn
Mr D Symes, Brinkworth
Mr S L Waite, Calne
Miss S Walsh, Swindon
Mr D Way, Devizes
Mr D & Mrs C Williams, Calne
Mr R Williams, Tidworth
Mr J Wyatt & Mrs L Hobson, Swindon
Mrs R Yeldham, Wanborough
Mrs A Young, Tidworth

BENEFITS

- ◇ Free entry to our award-winning Museum and special exhibitions
- ◇ Free welcome tour of museum and library
- ◇ Discounted lectures, conferences, courses and visits to museums, monuments and historic houses
- ◇ Regular newsletter with the latest news and forthcoming events
- ◇ Opportunities to find out more about Wiltshire's story as you get to know fellow members and meet subject experts
- ◇ Opportunities to make new friends by getting involved in the museum and society as a volunteer
- ◇ Opportunities to get involved in archaeological fieldwork and excavation with our Wiltshire Archaeology Field Group
- ◇ Opportunities to read the latest archaeological and historical research in your free copy of our annual journal
- ◇ Opportunities to find out about where you live with free research access to the 50,000 books, documents, maps and images in our library and archive.
- ◇ Free entry to Salisbury Museum and the Dorset County Museum as part of the Wessex Museums Partnership
- ◇ Knowing that you are helping to support our vital educational work and the long-term care of our nationally important collections.

See inside front cover for current membership subscription rates.



ACTIVITIES, EVENTS, LECTURES AND OUTINGS 2014-15

April 2014

FAMILY EVENT: Weapons and Warfare, led by Mark Routledge

WALK: Boles Barrow and Norton Down Long Barrow, led by Roy Canham

May

YOUNG WANHS: The Siege of Devizes - a walk led by historian Robin Hodges

FAMILY EVENT: A Fright at the Museum!

June

EVENING WALK: Upper By Brook Valley, led by Isobel Geddes.

July

MEMBERS EVENT: Behind The Scenes at the Museum

OUTING: Barrow Clumps - visit to the excavations

WORKSHOP: Prehistoric Jewellery Making Workshop for the Festival of British Archaeology, led by Cathy Fairgrieve of Vines Designs

EVENING WALK: Devizes At War - 1939-1945, led by John Girvan

SUMMER STORIES: Sensory Storytelling including handling real prehistoric objects

August

WALK: Walking the Dead: Exploring the Stonehenge ceremonial landscape and guided tour of the museum collections, led by David Dawson

WALK: Vale of Wardour and Nadder Valley, led by Isobel Geddes

SUMMER STORIES: Prehistoric Stories and Cave Art

SUMMER STORIES: Time Travel Tour

September

YOUNG WANHS: Excavation near Bromham - visit to excavation by the Archaeology Field group

WALK: Heritage Open Day, led by John Girvan

DEVIZES AT WAR: tour of the town, led by John Girvan

WALK: Walking the Dead: Exploring the Stonehenge ceremonial landscape and guided tour of the museum collections, led by Dawson Dawson

October

OUTING: Littlecote House

EVENING COURSE: *The Archaeology of Mass Destruction - the Cold War and its legacy* by Bob Clarke

YOUNG WANHS: Walk to West Kennet Long Barrow

LECTURE: *The Lacock Cup* by Naomi Speakman of the British Museum

November

FAMILY EVENT: World War 1, with Richard Broadhead

FILM SHOW: *Letters From a Small Town* - part of our *Why we Went to War: Devizes in the Great War* exhibition

LECTURE: *Star Carr in context: Life in Britain after the Ice Age* by Tim Schadla-Hall of the Institute of Archaeology

RAILWAY CONFERENCE

LECTURE: *Neolithic Houses and Settlement at Kingsmead Quarry* by Alistair Barclay of Wessex Archaeology

LECTURE: *Building Neolithic Houses at the Stonehenge Visitor Centre* by Luke Winter of the Ancient Technology Centre

December

LECTURE: *The Romano-British Cemeteries at Amesbury Down* by Jackie McKinley of Wessex Archaeology

FAMILY EVENT: Christmas Decorations and Card Making

January 2015

YOUNG WANHS: Paper and Paper-making

SPECIAL EVENT: Sunday Lunch in Lambtons (Bear Hotel)) followed by a guided tour at the Wiltshire Museum with David Dawson

LECTURE: *The Stonehenge Landscape* by Sharon Souter of English Heritage

February

TEACHERS BRIEFING: Stonehenge, Prehistory and the Curriculum

LECTURE: *The Roman Army in Wiltshire* by John Smith

YOUNG WANHS: Romans

LAUNCH: *Walking the Wessex White Horses* - launch of mobile app and leaflet

LECTURE: *Placing the 'burh' in Searobyrg: Salisbury and Old Sarum in the Anglo-Saxon Period* by Alex Langlands of the University of Winchester

March

OUTING: Ancient Technology Centre and Dorset Cursus, led by Luke Winter

YOUNG WANHS: Field Trip to Wansdyke, Woden's Barrow and a White Horse

LECTURE: *Romans, Britons and Saxons: Wessex in the fifth Century* by Bruce Eagles

See page 7 for details of exhibitions held at the Museum during the year.

Reviews from Trip Advisor, the new Story of Devizes Gallery

"Lots to see"

***** Reviewed 25 April 2014

Wiltshire Museum in Devizes punches well above its weight for user-friendliness and excellent displays. The recently refurbished neolithic galleries containing gold artefacts from Stonehenge are stunning, and director David Dawson and his team are to be congratulated on all the hard work they have done to achieve this. Well worth a visit in conjunction with one to Stonehenge itself. Not

"A gem of a museum"

***** Reviewed 17 May 2014

This little museum packs a big punch in a small space. It illustrates 500,000 years of prehistory and history of Wiltshire, and includes displays as diverse as woolly rhinoceros fossils, Roman jewelry and tools and Neolithic construction and burials. In addition, it houses an important archive, whose staff are friendly and eager to help researchers. This museum enhanced my appreciation



WILTSHIRE ARCHAEOLOGICAL AND NATURAL HISTORY SOCIETY

TRUSTEES' FINANCIAL REPORT FOR THE YEAR ENDED 31 MARCH 2015

TRUSTEES' FINANCIAL RESPONSIBILITIES

The Trustees (who are directors for the company for the purposes of company law) are responsible for preparing the Trustees' Report and the financial statements in accordance with applicable law and regulations.

Company law requires the Trustees to prepare financial statements for each financial year. Under that Law the Directors have elected to prepare the financial statements in accordance with United Kingdom Generally Accepted Accounting Practice (United Kingdom Accounting Standards and applicable law). Under company law the Directors must not approve the financial statements unless they are satisfied that they give a true and fair view of the state of affairs of the Society and the income and expenditure for that period. In preparing these financial statements, the Trustees are required to:

- * Select suitable accounting policies and apply them consistently;
- * Make judgements and estimates that are reasonable and prudent;
- * Prepare the financial statements on the going concern basis unless it is inappropriate to presume that the Company will continue to operate.

The Trustees are responsible for keeping proper accounting records which disclose with reasonable accuracy at any time the financial position of the Company and to enable them to ensure that the financial statements comply with the Companies Act 2006. They are also responsible for safeguarding the assets of the Company and hence for taking reasonable steps for the prevention and detection of fraud and other irregularities.

Internal risks are minimised by the implementation of procedures for the authorisation of all transactions and projects are costed initially and monitored on a regular basis. The Board employ Investec to manage both the investment portfolio and the endowment fund portfolio with the primary investment objective to achieve a balanced return from income and capital with a medium level of risk.

The Society does not hold any indemnity insurance against any liability for negligence, default, breach of duty or breach of trust by a Trustee.

The Board employed Investec for most of the year to manage the investments. In March 2015 the Board moved the Funds to the management of Rathbones.

RISK ASSESSMENT

The risk assessments for all galleries are reviewed regularly and a risk assessment is made of all activities undertaken. On the financial side a budget is prepared each year assessing the likely income receivable and costs of activities, which is monitored carefully and reported to the Trustees at each Board meeting.

RESERVES AND FUNDRAISING

The Trustees consider, in line with the Charity Commission advice, that the Society should have general reserves equivalent to at least one year's costs, that is some £300,000, to provide a measure of security; however, as the Society is dependent on its investments to provide ongoing income for its operations the reserves have to be substantially greater.

FINANCIAL REVIEW

The contribution to reserves was £27,800, £71,400 better than budgeted. This includes a gain in the market value of our main investments of £55,400. The rest of the improvement was due to increased donations and event income.

We received support from Wiltshire Council who continued their grant of £35,500. We also received £3,000 from Devizes Town Council and £500 from Roundway Parish Council. These grants are very valuable as they are available for core expenses.

Specific project grants enable the Society to extend its work in ways it would be unable to undertake without such support and we are extremely grateful for all the grants we receive.

Our capital reserves and general reserves are now £543,000 and as stated the Trustees consider that these should not fall below £300,000. The reduction in operating costs has extended the viability of the Society. It is difficult to forecast a specific time when our reserves might fall below the above level as the value of our investments will be a key factor. The ongoing pension liability of £21,000 per year as described in Note 1 to the accounts is a serious burden.

Our staff are fully aware of the situation and working as a team continue to maintain our normal high standards. Expenditure is closely monitored and monthly accounts are produced to ensure we are operating within budget.

Investment income from the Society's portfolio and from the Sandell Trust was £66,000, an increase of £18,000 on the previous year. £25,000 was reinvested into the Society's portfolio. After taking into account profits on realised and unrealised gains of £55,400 the net increase to general reserves was £27,800.

ENDOWMENT FUND

The Fund is managed on a low to medium risk mandate. During the year £108,000 was received due to a very generous legacy from Mrs Eileen Rollo, a much missed member, volunteer and supporter. Income received and profit on investments has increased the value of the Endowment Fund in the year by £14,000.

Under the terms of the Endowment Trust the capital is not available for distribution but must be invested to provide income for the Society at some future date to be decided by the Trustees.

The Trustees have reserved the right to transfer income received by the Fund to general reserve from the year ended 31 March 2010 and have been made during the year ended 31 March 2015.

INCOMING RESOURCES

Incoming resources are allocated on the basis of the purposes for which they are raised, the income for designated and restricted funds being credited to those funds. The accounts include £317,000 for restricted funds, primarily the Endowment Fund. These funds are not available to the Society for general use and must therefore be disregarded when assessing the Society's financial position.

FORWARD PLAN

Each year the Board approves a Forward Plan that contains objectives and targets for the year. The Forward Plan concentrated on achieving Accreditation, formal completion of the HLF Prehistoric Wiltshire project, Saxon Gallery and the Wessex Museums Partnership project. Most targets were achieved while a few ran late or were held over into 2015-16 for technical reasons.

RELATED PARTIES

For many years the Society has enjoyed a close relationship with the Salisbury and South Wiltshire Museum as demonstrated by the reciprocal arrangement for free entry to the museums for members of each organisation and co-operation on exhibitions, their Director, Adrian Green, is a nominee on our Board and our Director is a nominee on their Board. We built on the relationship by developing the Wessex Museums Partnership with the support of the Arts Council.

The support of Wiltshire Council and Devizes Town Council in providing funding to the Museum is gratefully acknowledged together with the contributions to the Board of their nominated Trustees. The Wiltshire Council conservation staff continued to give great support and help to the Society, although this will not now continue on the same basis. We are pleased to continue working in partnership with English Heritage and Salisbury Museum through the Stonehenge

Museums Partnership. We are also to begin working with the wider Wessex5 Museums Partnership, supported by Arts Council England. Led by Poole Museum Service, this also includes Salisbury Museum, Dorset County Museum and the Russell-Cotes Art Gallery and Museum. The Board is aware that progress through partnership is the most effective pathway to success and will be pursuing every available opportunity to build strong partnerships.

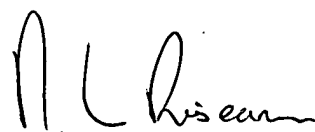
AUDITORS

David Owen & Co. were re-appointed as auditors of the Company at the Annual General Meeting and have expressed their willingness to continue to act.

This report has been prepared in accordance with the Statement of Recommended Practice Accounting and Reporting by Charities (issued in March 2005) and in accordance with the special provisions of Part 16 of the Companies Act 2006 relating to small entities.

The Trustees have taken all steps which they ought to have taken to be aware of any relevant audit information and to establish that the Society's auditors are aware of that information. So far as the Trustees are aware there is no relevant audit information of which the Society's auditors are unaware.

Approved by the Trustees on 2 September 2015 and signed on their behalf by:



Mr D L Roseaman
2 September 2015
Chairman,
on behalf of the Board of Trustees

REPORT OF THE AUDITORS FOR THE YEAR ENDED 31 MARCH 2015

Independent Auditors' Report
to the Members of the Wiltshire Archaeological and Natural History Society

We have audited the financial statements of the Wiltshire Archaeological and Natural History Society for the year ended 31 March 2015 which comprise of the Statement of Financial Activities, the Balance Sheet and the related notes. The financial reporting framework that has been applied in their preparation is applicable law and United Kingdom Accounting Standards (United Kingdom Generally Accepted Accounting Practice).

This report is made solely to the charity's trustees, as a body, in accordance with Section 144 of the Charities Act 2011 and with regulations made under Section 154 of that Act. Our audit work has been undertaken so that we might state to the charity's trustees those matters we are required to state to them in an auditor's report and for no other purpose. To the fullest extent permitted by law, we do not accept or assume responsibility to anyone other than the charity and the charity's trustees as a body, for our audit work, for this report, or for the opinions we have formed.

Respective responsibilities of trustees and auditors

As explained more fully in the Trustees' Responsibilities Statement (set out on page 17) the trustees (who are also the directors of the charitable company for the purposes of company law) are responsible for the preparation of the financial statements and for being satisfied that they give a true and fair view.

The trustees have elected for the financial statements to be audited in accordance with the Charities Act 2011 rather than the Companies Act 2006. Accordingly we have been appointed as auditor under section 144 of the Charities Act 2011 and report in accordance with regulations made under section 154 of that Act.

Our responsibility is to audit and express an opinion on the financial statements in accordance with applicable law and International Standards on Auditing (UK and Ireland). Those standards require us to comply with the Auditing Practices Board's Ethical Standards for Auditors.

Scope of the audit of the financial statements

An audit involves obtaining evidence about the amounts and disclosures in the financial statements sufficient to give reasonable assurance that the financial statements are free from material misstatement, whether caused by fraud or error. This includes an assessment of: whether the accounting policies are appropriate to the charitable company's circumstances and have been consistently applied and adequately disclosed; the reasonableness of significant accounting estimates made by the trustees;

and the overall presentation of the financial statements. In addition, we read all the financial and non-financial information in the Year End Review to identify material inconsistencies with the audited financial statements. If we become aware of any apparent material misstatements or inconsistencies we consider the implications for our report.

Opinion on financial statements

In our opinion the financial statements:

- give a true and fair view of the state of the charitable company's affairs as at 31 March 2015 and of its incoming resources and application of resources, including its income and expenditure, for the year then ended;
- have been properly prepared in accordance with United Kingdom Generally Accepted Accounting Practice; and
- have been prepared in accordance with the requirements of the Charities Act 2011.

Emphasis of matter

We draw attention to the financial review section of the Trustees' Financial Report and in particular reference to the viability of the Society.

Matters on which we are required to report by exception

We have nothing to report in respect of the following matters where the Charities Act 2011 requires us to report to you if, in our opinion:

- the information given in the Trustees' Annual Report is inconsistent in any material respect with the financial statements; or
- the charitable company has not kept adequate accounting records; or
- the financial statements are not in agreement with the accounting records and returns; or
- we have not received all the information and explanations we require for our audit.



David Owen & Co,
Chartered Accountants and Statutory Auditors
17 The Market Place, Devizes, Wiltshire

Date: 2 September 2015

David Owen & Co is eligible to act as an
auditor in terms of section 1212
of the Companies Act 2006

WILTSHIRE ARCHAEOLOGICAL AND NATURAL HISTORY SOCIETY

**STATEMENT OF FINANCIAL ACTIVITIES
FOR THE YEAR ENDED 31 MARCH 2015**

		Unrestricted Funds				
		General Fund	Designated Funds	Restricted Funds	Total Funds 2015	Total Funds 2014
	Note	£	£	£	£	£
INCOME AND EXPENDITURE						
Incoming Resources						
From Generated Funds						
Voluntary Income	2	83,565	3,900	124,578	212,043	149,538
Activity Generated Funds	3	50,301			50,301	32,827
Investment Income	4	37,774			37,774	23,770
From Charitable Activities						
Grants and Contributions	5	137,556			137,556	298,714
Admissions		28,340			28,340	18,409
Education Receipts		6,328			6,328	6,980
Programme Committee			3,302		3,302	21,270
Total Incoming Resources		343,864	7,202	124,578	475,644	551,508
Resources Expended						
Cost of Generating Funds	7	35,558			35,558	32,600
Cost of Charitable Activities	8	277,388	9,343	18,629	305,360	478,504
Governance Costs	9	58,500			58,500	58,722
		371,446	9,343	18,629	399,418	569,826
Net Incoming/(Outgoing)		(27,582)	(2,141)	105,949	76,226	(18,318)
Resources for the Year						
Profits(Losses) on investments						
Realised investments	13	116		2,531	2,647	2,991
Unrealised investments		55,303		11,525	66,828	15,824
Net Resources Incoming/ (Expended) before transfers		27,837	(2,141)	120,005	145,701	497
Transfers between Funds	16					
Net Movement in Funds		27,837	(2,141)	120,005	145,701	497
Fund Balances brought forward at 1 st April 2014		(257,763)	280,168	196,816	219,221	218,724
Total Funds carried forward at 31 st March 2015		(229,926)	278,027	316,821	364,922	219,221

WILTSHIRE ARCHAEOLOGICAL AND NATURAL HISTORY SOCIETY

BALANCE SHEET AS AT 31 MARCH 2015

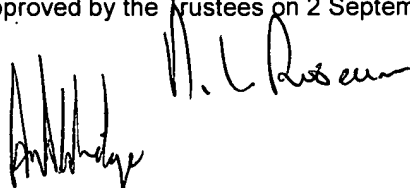
	Notes	2015 £	£	2014 £	£
Fixed Assets					
Tangible Fixed Assets	12		94,880		96,380
Managed Investments					
Securities	13	826,681		712,057	
Cash		<u>1,581</u>	828,262	<u>39,668</u>	751,725
Restricted Fund Assets					
Managed Endowment Investments					
Securities	13	245,743		131,732	
Cash		<u>423</u>		<u>5,569</u>	
	17		246,166		137,301
Current Assets					
Stock		13,215		11,904	
Debtors	14	89,196		83,941	
Cash at Bank		<u>29,138</u>		<u>28,317</u>	
		131,549		124,162	
Liabilities					
Creditors due within one year	15	<u>162,872</u>		<u>117,284</u>	
Net Current Assets			(31,323)		6,878
Net Assets			<u>1,137,985</u>		<u>992,284</u>
Reserves and Funds					
Capital Reserve			773,063		773,063
Revenue Funds					
General		(229,926)		(257,763)	
Designated	16	<u>278,027</u>		<u>280,168</u>	
			48,101		22,405
			821,164		795,468
Restricted Funds	17		316,821		196,816
			<u>1,137,985</u>		<u>992,284</u>

The notes on pages 22 to 27 of these financial statements form part of these accounts.

The financial statements were approved by the Trustees on 2 September 2015, and signed on their behalf:

D L Roseaman, Chairman

A Aldridge, Honorary Treasurer



WILTSHIRE ARCHAEOLOGICAL AND NATURAL HISTORY SOCIETY

NOTES TO THE FINANCIAL STATEMENTS FOR THE YEAR ENDED 31 MARCH 2015

1. Statement of Accounting Policies

Basis of Preparation

The financial statements have been prepared under the historical cost convention; in accordance with the Companies Act 2006, the Statement of Recommended Practice (SORP) Accounting and Reporting by Charities (revised 2005), and applicable accounting standards. Where necessary the headings laid down in the Act have been adapted to meet the special activities of the Company. The Company qualifies as a small company under the Act and the Trustees have elected to take advantage of the exemption under FRS 1 not to prepare a cash flow statement.

Company Status

The Company is a company limited by guarantee. The members of the company are subscribing members. In the event of the Company being wound up, the liability in respect of the guarantee is limited to £10 a member.

Tangible Fixed Assets and Depreciation

Tangible fixed assets costing more than £4,000 are capitalised and included at cost. Grant funded purchases are written off in the year of acquisition. Depreciation is provided on all fixed assets at rates calculated to write off the cost on a straight line basis over the expected useful economic life as follows:

Freehold Land	Nil.
Freehold Buildings	over 50 years.
Fixtures, Fittings and Equipment	over 5 years.

Investments

Realised gains and losses are taken to the Statement of Financial Activities and unrealised gains and losses are shown separately in that statement. Investment Income has been taken into account on the basis of the due date of payment.

Stock

Stock consists of purchased goods for resale and unsold publications. Stocks are valued at the lower of cost or net realisable value after making allowance for obsolete and slow moving stock.

Incoming Resources

Legacies are normally taken into account when received and if not given for specific purposes are utilised either for general expenditure or for the specific purposes which the Trustees believe the Testator would have approved.

Donations of items for resale are included in receipts when received.

Subscriptions are spread over the year in which they are received. No life membership subscriptions were received in the year.

All receipts and expenditure are shown in full in the accounts.

Grants - where a grant is, wholly or partly, in respect of expenditure to be incurred in the following financial year the appropriate sum is deducted from income and included in liabilities as grants received in advance. Conversely in the following year this procedure is reversed with grants being withdrawn from grants received in advance and treated as income of the current year.

Allocation of Expenditure

Throughout the financial statements, where it is necessary to allocate staff or other costs over objective heads (i.e. museum, archive and Library etc.), this has been done on the assessment of the Director and the Treasurer.

Pensions

At 31 March 2015 pension provision was made for four employees by membership of a Pensions Trust Scheme, a defined contribution pension scheme. All other employees have been offered membership of this scheme but did not wish to join or were past the age for admittance. Employer's contributions of £5,313 (2014 - £5,124) are charged to employee costs as incurred. The Society ceased to be a scheme employer in the Wiltshire Pension Fund and as stated in the 2012 Report we have entered into an agreement with Wiltshire Council to reimburse the deficit by payment of £21,000 for each year up to and including December 2031. The additional payment of £21,000 was therefore made in the year to 31 March 2015 and charged to employee costs.

Capital Reserve

The Capital Reserve shown in these accounts arises from the transfer of assets, reserves, funds and liabilities from the original Society and represents the balance on the General Fund at the 22 November 2003.

Going Concern

These financial statements have been prepared on a going concern basis. The Trustees consider the use of the going concern basis of accounting appropriate as there are no material uncertainties related to events or conditions that may cast significant doubt about the ability of the Company to continue as a going concern.

The Wiltshire Archaeological and Natural History Society Endowment Fund

The Endowment Fund is a charity established to raise and hold capital, the income from which will be used to support the activities of the Wiltshire Archaeological and Natural History Society. The Company is the corporate trustee of the Fund which shares the Company's charity registration number. Under the terms of the Charity Registration the accounts of the Fund are included in the Company's accounts but as a separate charity these funds do not form part of the Company's assets.

The Wiltshire Archaeological and Natural History Society Collections Trust

The Company is the Corporate Trustee of the Collections Trust which owns the Collections. On 3 March 2004, the Charity Commission issued a Uniting Direction under Section 96 (5) of the Charities Act 1993 stating that the Collections Trust shall be treated as forming part of the Company for the purposes of registration and accounting. The Direction points out that the Company will be the reporting charity and the Collections Trust will be the linked charity. However "the Company does not hold the endowment of the Collections Trust as corporate property. The Company is the Trustee of the endowment and holds the property in trust. At no time can the endowment of the Collections Trust be considered an asset of the Company." Accounts for the Collections Trust have been set up within the Company's books and separate bank accounts have been established. Acquisitions for the collections are made by the Collections Trust. The Collection Trust Accounts are included as a separate schedule with these accounts.

WILTSHIRE ARCHAEOLOGICAL AND NATURAL HISTORY SOCIETY

NOTES TO THE FINANCIAL STATEMENTS
FOR THE YEAR ENDED 31 MARCH 2015

	Notes	General Fund	Designated Funds	Restricted Funds	Total 2015	Carried Forward	Total 2014
		£	£	£	£	£	£
Incoming Resources From Generated Funds							
2 Voluntary Income							
Membership Subscriptions		32,788			32,788		29,653
Donations and Tax Refunds		22,192	3,900	108,886	134,978		28,004
Legacies				15,692	15,692		63,571
Income transferred by Old Society Sandell Trust		28,585			28,585		28,310
		<u>83,565</u>	<u>3,900</u>	<u>124,578</u>	<u>212,043</u>		<u>149,538</u>
3 Activity Generated Funds							
Shop Sales	6	26,787			26,787		21,550
Other Sales		278			278		1,326
Museum Income		16,646			16,646		4,009
Fund-raising Events		6,590			6,590		5,942
		<u>50,301</u>			<u>50,301</u>		<u>32,827</u>
4 Investment Income							
Income from Investments		37,704			37,704		23,769
Bank Interest		70			70		1
		<u>37,774</u>			<u>37,774</u>		<u>23,770</u>
5 Grants and Contributions							
ACE Designation Grant		31,544			31,544	17,963	16,426
Bronze Age galleries contributions		1,500			1,500		
Devizes Area Board		1,121			1,121		825
Devizes Area Tourism		4,529			4,529	1,909	878
Devizes Town Council		3,000			3,000		3,000
Roundway Parish Council		500			500		
Exhibitions Gallery		3,039			3,039	3,039	
HLF Catalyst Grant		9,800			9,800	8,525	
HLF-BA Galleries		86			86		5
Mercers Trust		57			57		57
Nat. Manuscript Cons. Trust		1,700			1,700	(1,700)	3,400
Other Grants							
PWG-HLF		(177)			(177)	(26,589)	212,768
Stonehenge Bus		5,295			5,295	5,295	
Walking White Horses		3,891			3,891		20,372
Wessex Archaeology		64			64		540
Wessex Museum Partnership		30,375			30,375	(20,401)	
William Doc Couch Trust		1,870			1,870		
Wiltshire Council		35,500			35,500		35,500
Wiltshire Council Apprentice		3,862			3,862		4,943
		<u>137,556</u>			<u>137,556</u>	<u>(11,959)</u>	<u>298,714</u>
6 Shop Sales							
Shop sales		26,787			26,787		21,550
Less Purchase cost		<u>16,936</u>			<u>16,936</u>		<u>15,404</u>
Gross Profit		<u>9,851</u>			<u>9,851</u>		<u>6,146</u>
Gross Profit % on sales		<u>36.78%</u>			<u>36.78%</u>		<u>28.52%</u>

WILTSHIRE ARCHAEOLOGICAL AND NATURAL HISTORY SOCIETY

NOTES TO THE FINANCIAL STATEMENTS FOR THE YEAR ENDED 31 MARCH 2015

	Notes	General Fund £	Designated Funds £	Restricted Funds £	Total 2015 £	Total 2014 £
7 Cost of Generating Funds						
Cost of Sales :						
Shop		17,132			17,132	15,404
Salaries		8,113			8,113	8,059
Members' services		3,925			3,925	2,769
Marketing		435			435	2,332
Fundraising costs		3,299			3,299	839
Support costs		2,654			2,654	3,197
		<u>35,558</u>			<u>35,558</u>	<u>32,600</u>
8 Cost of Charitable Activities :						
Museum Services		211,531			211,531	373,598
Library Services		32,006			32,006	34,069
Educational work		23,146			23,146	23,151
WANHM		10,705			10,705	5,000
Designated Funds :	16		9,343		9,343	38,071
Restricted Funds :	17			18,629	18,629	4,615
		<u>277,388</u>	<u>9,343</u>	<u>18,629</u>	<u>305,360</u>	<u>478,504</u>
9 Governance Costs						
Employee costs		46,748			46,748	46,676
Audit Fees		4,800			4,800	4,800
Support costs		6,952			6,952	7,246
		<u>58,500</u>			<u>58,500</u>	<u>58,722</u>

Volunteers' travel expenses £1,940 have been allocated to the separate activities in the current year. (2014 £2,717)

10 Staff costs						
Wages and Salaries				131,617	127,802	
Social Security costs				6,688	8,587	
Pension costs				26,422	26,124	
				<u>164,727</u>	<u>162,513</u>	
Costs attributable to activities :						
Museum				70,955	69,241	
Library				20,870	20,754	
Education				18,041	17,784	
Cost of Generating Funds				8,113	8,058	
Management and Administration				46,748	46,676	
				<u>164,727</u>	<u>162,513</u>	

Pension costs include £21,000 repayment of the deficit in previous years

No employee received emoluments for the period exceeding £60,000.

The average number of employees in 2015 was 2 full time and 9 part time (2014 - 2 full time and 9 part time).

11 Trustees' Expenses

No trustee either received or waived any emoluments for acting as Trustee during the year.

WILTSHIRE ARCHAEOLOGICAL AND NATURAL HISTORY SOCIETY

NOTES TO THE FINANCIAL STATEMENTS FOR THE YEAR ENDED 31 MARCH 2015

12 Tangible Fixed Assets

	Freehold Land	Freehold Buildings	Fixtures, Fittings & Equipment	Total	2014
	£	£	£	£	
Cost at 1 st April 2014	72,750	72,750	7,345	152,845	152,845
Accumulated Depreciation at 1 st April 2014		49,220	7,245	56,465	55,010
Charge in year		1,500		1,500	1,455
Accumulated Depreciation at 31 st March 2015		50,720	7,245	57,965	56,465
Net Book Value at 31 st March 2015	72,750	22,030	100	94,880	96,380

To give a consistent view the assets transferred from the original Society have been included at the values in its books. The property was valued professionally in 1987 at £145,500; now divided between land and buildings. The Trustees are of the opinion that the costs of revaluation would not provide sufficient benefits to justify the expenditure involved.

13 Quoted Fixed Asset Investments

	Total Original Portfolio 2015	Total Endowment Portfolio 2015	Total Original Portfolio 2014	Total Endowment Portfolio 2014
Market Value at 1st April, 2014	712,057	131,732	721,641	118,365
Purchases	81,887	136,371	125,896	5,438
	793,944	268,103	847,537	123,803
Sales	22,682	36,416	146,263	103
	771,262	231,687	701,274	123,700
Net profits/(losses) :				
Realised	116	2,531	2,991	
Unrealised	55,303	11,525	7,792	8,032
Market value at 31 st March 2015	826,681	245,743	712,057	131,732

Historical Cost of investments at 31 March 2015 = £687,212 (31 March 2014 = £625,903) for the General Portfolio and £214,660 (31 March 2014 = £101,116) for the Endowment Portfolio.

14 Debtors

	Total 2015	Total 2014
	£	£
Grants and Donations receivable	48,690	34,287
Trade Debtors	6,376	13,574
Debtors and Prepayments	19,768	13,141
Gift Aid refund receivable	6,030	13,000
VAT recoverable	8,332	3,579
Monies owed by the Old Society		6,360
	89,196	83,941

15 Liabilities : Amounts falling due within one year

	Total 2015	Total 2014
Grants received in advance	45,620	42,013
Trade Creditors	74,045	30,101
Accruals	6,792	10,600
Pension Contributions	1,042	842
Taxes including NIC	3,411	2,600
Prepaid membership subscriptions	19,509	18,763
Other Income in Advance	12,453	12,365
	162,872	117,284

WILTSHIRE ARCHAEOLOGICAL AND NATURAL HISTORY SOCIETY

NOTES TO THE FINANCIAL STATEMENTS FOR THE YEAR ENDED 31 MARCH 2015

16 Designated funds

	Incoming Resources					
	Balance 1 April 2014 £	Income, Donations & Gift Aid £	Other Income £	Inter-Fund Transfers £	Expenditure £	Balance 31 March 2015 £
Archaeology Field Group	2,044	1,851			(906)	2,989
Improvement Fund	11,112					11,112
Library Fund	5,934	853			(821)	5,966
Programme Committee	10,539	3,302				13,841
Publications Fund	17,817	1,196			(427)	18,586
Wiltshire Life	232,722				(7,189)	225,533
	280,168	7,202	0	0	(9,343)	278,027

The purpose of the designated funds (which may be changed by the Company's Board of Trustees) is currently:

Improvement Fund	Established by the original Society to finance improvements to the Galleries.
Library Fund	To finance items of library conservation and management.
Publications Fund	To finance publications.
Archaeology Field Group	To finance archaeological activity.
Programme Committee	To finance members' events and generate funds for the Society.
Wiltshire Life	To finance the care and development of the Wiltshire Life Society Collections. The expenditure consists of direct costs and ignores curatorial charges as the trustees consider that these are offset by investment income.

17 Restricted Funds

	Balance 1 April 2014 £	Incoming Resources Income, Donations & Gift Aid £	Profit on investments £	Inter-Fund Transfers £	Expenditure £	Balance 31 March 2015 £
English Heritage Fund	4,030	302				4,332
Seeking Roman Calne	940				(940)	0
Oexmann Fund	20,974	467			(4,381)	17,060
Legacies carried forward	33,571	15,692				49,263
	59,515	16,461			(5,321)	70,655
Endowment Trust Fund	137,301	108,117	14,056		(13,308)	246,166
	196,816	124,578	14,056		(18,629)	316,821

The restricted funds may only be used for specific purposes:

English Heritage Fund	To finance specific publications and projects.
Oexmann Fund	To finance a biennial art exhibition.
Legacies carried forward	Legacies received from Sylvia Jones and E. G. Look, for use in future Projects

These fund balances at 31st March 2015, are held as part of the Company's overall assets and cash at bank.

Endowment Trust Fund	This is a separate charity, of which the Company is the corporate trustee. It is established to raise capital, the interest from which will be paid to the Company for its general use. The funds are invested separately and do not form part of the Company's fixed assets.
----------------------	-------------------------------------------------------------------------------------------------------------------------------------------------------------------------------------------------------------------------------------------------------------------------------

WILTSHIRE ARCHAEOLOGICAL AND NATURAL HISTORY SOCIETY
COLLECTIONS TRUST - Linked Charity Number 1080096
STATEMENT OF FINANCIAL ACTIVITIES
FOR THE YEAR ENDED 31 MARCH 2015

	General Fund	2015 Restricted Funds	Total	2014 Total
	£	£	£	£
Incoming Resources				
Grants				
Legacy				
Donations	3,933		3,933	6,243
Sale - Miscellaneous			0	598
Bank Interest			0	0
Total Incoming Resources	3,933	0	3,933	6,841
Resources Expended				
Acquisitions costing less than £1,000				
Museum	940		940	4,540
Library	785		785	883
	1,725	0	1,725	5,423
Costs				
Sundry	171		171	0
Total Resources Expended	1,896	0	1,896	5,423
Excess of Income over Expenditure	2,037	0	2,037	1,418
Balance at 1 April 2014 brought forward	12,669	9,050	21,719	20,301
Balance at 31 March 2015 carried forward	14,706	9,050	23,756	21,719

BALANCE SHEET AS AT 31 MARCH 2015

Heritage Assets		
Balance at 1 April 2014	11,134	11,134
Acquisitions over £1,000	-	-
	11,134	11,134
Current Assets		
Cash in Bank	12,622	10,585
Debtor	0	0
	23,756	21,719

Represented by:	Balance at 1 April 2014 £	Legacy £	Income, Grants & Donations £	Inter Fund Transfers £	Expenditure £	Balance at 31 March 2015 £
Museum Art Fund	12,669	0	3,933	0	1,896	14,706
Restricted Funds	9,050	0	0	0	0	9,050
	21,719	0	3,933	0	1,896	23,756

NOTES TO THE FINANCIAL ACTIVITIES

Museum and Art Collections. The collections fall within the definition of heritage assets for the purposes of Financial Reporting Standard 30.

Accounting Policies:

1. No value has been placed on the collections held prior to 1 April 2005. To establish a value would involve significant costs, onerous compared to the additional benefit derived by the users of the financial statements.
2. The Trustees have adopted a policy whereby acquisitions costing less than £1,000 are not capitalised but are written off in the year of purchase.
3. Acquisitions costing in excess of £1,000 are capitalised and stated at cost as heritage assets.
4. No depreciation is provided on heritage assets as all are deemed to have indefinite lives.

Policies for acquisition, disposal and conservation. Policies for acquisition, disposal and conservation meet Accreditation Standard, which has been awarded by the Museums, Libraries and Archives Council, and has been approved by the Board of Trustees.

Summary of Transactions:

	31.03.2015	31.03.2014	31.03.2013	31.03.2012	31.03.2011	31.03.2010
	£	£	£	£	£	£
Cost of assets acquired and capitalised				6,144		
Less grants received						
Net cost capitalised				6,144		
Value of assets acquired by donation and not reported in the Balance Sheet						
Cost of assets written off in year of purchase as per accounting policy	1,725	5423	1,164	9,035	102	2,520

WILTSHIRE ARCHAEOLOGICAL AND NATURAL HISTORY SOCIETY

Charity No: 1080096

Company No. 3885649

MINUTES OF THE 14th ANNUAL GENERAL MEETING OF THE COMPANY

held in the Town Hall, Devizes on Saturday 25 October 2014, commencing at 2.30 pm

01/14 Present

Mr D L Roseaman (Chairman) and members of the Board of Trustees: Mr A Aldridge (Hon Treasurer), Mr C J Baumber, Mr C T Callow, Mrs E Gaunt, Mr J Ody (Devizes Town Council Nominee), Mr W A Perry, Mr M Pope (WANHS Trustee), Mr P R Saunders (Deputy Chairman), and 59 members of the Society.

In Attendance

Mr D Dawson (Director), Mrs K P Jones (Minute Taker and Company Secretary), Ms L Pictor (Trustee elect),

02/14 Apologies for Absence

Were received from: Mr R Broadhead (WANHS Trustee), Mr M Chislett, Mrs M R Clarke, Mr & Mrs O D H Clauson, Mr & Mrs A J Duck, Cllr P Evans (Wiltshire Councillor and WANHS Trustee), Dr D Field, Mr A Green (Director, Salisbury Museum and WANHS Trustee), Dr N Harte (WANHS Trustee), Ms A Hemmins (WANHS Trustee), Dr P H Robinson, Mr P & Mrs R Smith, Mrs G Swanton, Cllr C Williams (Wiltshire Councillor and WANHS Trustee)

03/14 Chairman's Opening Address

The Chairman welcomed members to the 15th Annual General Meeting of the Wiltshire Archaeological and Natural History Society (Company limited by Guarantee). Mr Roseaman had been elected Chairman of the Board of Trustees at their October 2013 meeting. He advised that he had been a member for over 20 years and had been involved in fundraising for the Society for many years. He introduced those Trustees present at the meeting (see minute 01/14)

The meeting stood for a few minutes to remember those members of the Society who had died since the last AGM, many of whom had been known to the chairman: Major P A J Brown, Lt Col Anthony Claydon, Dr Alan Dodge, Mr James Dyer, Mr Andrew Marx, Miss U Milner-White, Mrs Eileen Rollo, Mr Tony Sampson, Mr Gordon Sharp, Mr Geoff Watkins.

The Chairman reported that Mrs Rollo had left £108,000 to the WANHS Endowment Fund – which meant the legacy could only be invested, but the interest earned could be used.

Note: these names are those notified to the Membership Secretary; the Society apologises for any omissions.

04/14 Minutes of meeting held 12 October 2013

The Chairman reported that discussions were still ongoing to find a methodology to ensure scheduled ancient monuments were monitored, as suggested by Mr Lovibond's at the 2013 AGM (minute 08/13).

Proposed by Mr P Taverner and seconded by Mr C J Baumber, the minutes of the AGM held on 12 October 2014 were adopted as a true record of the meeting. The resolution was passed nem con.

05/14 Board of Trustees' Report and Accounts for the year ended 31st March 2014

a) Report by the Chairman

The Chairman reported on a successful 2013/14 and the immense amount of work carried out by the Director and staff on grant funded projects, including the HLF project on the new Prehistoric Wiltshire Galleries (PWG). Some costs had to be raised to cover the total costs. The PWG project had received a lot of local and national coverage and had brought in a lot of visitors – helping to increase income from admissions and spend in the shop. A visit by HRH The Princess Royal in April 2014 was the culmination of a very important project.

There were now only two full time employees and they were supported by a team of excellent part-time staff. Unfortunately this was still not enough to do what the Society wanted to do and an additional £35,000 was required, but such income was difficult to raise.

The Chairman next thanked a number of individuals. Firstly Dr Colin Shell who had been Chairman of the WANHS Stonehenge Committee for many years but had now moved onto other areas. Mrs Gill Swanton was thanked for her many years as Chair of the Archaeology Committee and was sent best wishes. Other volunteers were also sent best wishes for speedy recoveries, including Trustee Ms A Hemmins and long-time volunteer Mrs Joan Friend. Dr N Harte, the former Chairman, was also thanked for all his help in recent years. Trustee Mr W A Perry was thanked for all his work, along with a large team of volunteers, in keeping the Library & Archive services available to visitors.

b) Report by the Treasurer

Mr A Aldridge presented the Treasurer's report for the year under review. He had taken over from the previous Treasurer, Mr Peter Glasson, last November. He complemented Mr Malcolm Church, the very part time member of staff who not only looks after the accounts day to day, but provides monthly figures and a clean audit.

The Treasurer reported that even with a loss of sales during the PWG building work there had been a net addition to overall funds of £500. He referred to 'deficit' as shorthand, but really its planned investment from reserves supporting the development of the profile and reputation of the Wiltshire Museum. An example was the £6,000 invested in a critically needed update to the core computer infrastructure.

The deficit, or 'excess of expenditure over income', for the year to 31 March 2014 was £38,600 but after improved value of investments of £10,800 the "deficit" was £27,800. Whilst our overall reserves were at £992,000, having been built over decades, it was important to remain focussed on adding to that each year by increasing the publicity and therefore attendance and membership of the Society. Legacies were important and enabled investment income, or funding opportunities.

£21,000 continued to be paid to Wiltshire Council as the WANHS contribution to the under-funding of their defined benefit pension scheme. These fixed annual payments would continue to be paid until 2031. We are very reliant on continued grant funding from Wiltshire Council, which just about offset this cost and rates.

In 2014/15 a budget deficit is forecast – or an investment from reserves - of £43,600, but already a legacy will result in a net increase in reserves. In the six months to 30 September 2014 a "deficit" of £21,700 had been recorded, although income is up almost 40% on the same period last year and feet through the door by 63%. Tight controls on expenditure resulted in expenditure being £800 under Budget for the same period. Higher volumes however add pressures on the small staff resource and there is even more need for help from the dedicated volunteers to maintain the high standards complimented by visitors. They were thanked for all their support.

The financial report and accounts were available from the website or on request from the Museum Office.

c) Report by the Director

Illustrated with lots of images the Director highlighted items from the 2013/14 year and more recent activity. He noted that the past few months had been fantastic with the opening of the new PWG the culmination of five years of work and lots of work by staff and volunteers. The grand opening in November 2013 had been attended by Dr Simon Thurley of English Heritage and Dr Phil Harding, one of the WANHS Patrons. Mr R Bewley, Director of Operations for the HLF had commented that the project was the 'sort of thing the HLF was set up to do' and asked what else we would be doing! Objects not required for the PWG had been loaned for an exhibition at the new Stonehenge Visitor Centre which had opened in December 2013. Work was ongoing to ensure that visitors to Stonehenge also came to Wiltshire Museum. An increasing number of visitors were coming to the Museum and Devizes had also received 'coach friendly' status – one of only 20 nationwide, including major cities.

In addition to the opening of the new galleries many other activities had taken place, were in progress, or being planned. The space created by the move of the Bronze Age collection to the new galleries had enabled a Story of Devizes Gallery to be displayed – a critical part of moving displays to create a chronological order. A redisplayed Saxon Gallery was also a work in progress. The Director had held a number of Stonehenge landscape walks (which included a tour of the PWG), initially offered to Daily Telegraph readers. To date some 100 people had participated. He found them very interesting and it was rewarding to get out in the landscape and share the walk. A tour by major donors to the Museum of London had visited West Kennet Long Barrow and then attended a dinner held at the Museum (with food provided by local chef Peter Vaughan). The Wiltshire Archaeology Field Group continued to be busy including a dig on Devizes Green to try and locate a Roman villa, excavations at Roundway – which had been attended by our Young WANHS group.

Behind the scenes work continued and this year included submitting our Accreditation renewal. This is an MoT for museums to prove that standards were being maintained – but lots of paper had to be provided and had involved some six months of work by the senior management team, but successful renewal is vital to attract funding. The renewal had been submitted in August 2014 and feedback was nervously awaited.

The use of digital promotion, such as Twitter and Facebook progresses and there were some two million opportunities to view information on the opening of the PWG galleries.

The collections continued to grow and discussions were ongoing with Wiltshire Council to secure an archaeology store, which would be funded from a levy on housing development, which was provided in the Wiltshire Council Core Strategy. However, although this would fund storage, there was no cash for the ongoing maintenance and conservation of the finds. WANHS has objected to a new housing development at Coate Road, Devizes, on the grounds that there was nowhere to store archaeological finds and therefore it was not sustainable under national guidelines. The use of artefacts in filming continued, with the most recent being *Secrets of the Sky* for ITV. The loan of a 'Soldier Bear' to the Museum during our WW1 exhibition provided a fascinating story. The bears were either red, white or blue and fitted into the top pocket of a soldier's uniform. Although he was originally blue this bear's individual story is not yet known.

Papers relating to the Cunningtons had recently been donated to the collections. These included the donation of Maud Cunnington's copy of her printed report on Woodhenge, together with letters, notes and plans. They had not yet been reviewed to ascertain what this meant for the story of that site.

The Director finished by thanking all those volunteers who give so much of their time to the Society.

Proposed by Mr D Kendall and seconded by Mr M Pope the Trustees Report and Annual Accounts for the year ended 31st March 2014, together with the Auditors Report were received. The resolution was passed *nem. con.*

07/14 Strategic Plan 2014-19

A new five year plan was required for Accreditation, and of the eight main aims included in the 2009-14 Strategic Plan, 37% had been achieved - including new galleries - and 40% partially. The aim to increase membership was still to be progressed. The 2014-19 Strategic Plan built on the previous plan and the main aims were – to be recognised as one of the most significant prehistory museums in England; complete a significant redisplay of galleries including new Iron Age and Roman galleries, a discovery gallery and a special exhibition gallery able to host objects from national museums; increase the number of our users, members and supports; be financially sustainable and resilient and able to adapt to change; be ready to take on more of a leadership role in the sector within the county, in collaboration with Salisbury Museum; enhance our learning and outreach offer.

The full plan was available from the website or on request from the Museum Office.

Proposed by Mr C J Baumber and seconded by Mr J Ody the meeting APPROVED the 2014-19 Strategic Plan. The resolution was passed *nem. con.*

08/14 Election of Trustees

Under the Society's constitution one-third of elected Trustees, excluding Officers, had to retire by rotation each year. As Mr Peter Glasson had resigned during the year and Dr Negley Harte was not eligible for re-election at this AGM, there were four nominations this year – Mr John Baumber and Dr David Field were seeking re-election and Mr Chris Callow and Ms Laura Pictor were new nominees. All four proposed Trustees had been proposed and seconded.

The meeting duly elected Mr David Carson, Mr Peter Glasson, Ms Annetta Hemmins and Mr Michael Pope, to the Board of Trustees *nem con.*

09/14 Appointment of Auditors

Proposed by Mr M Pope and seconded by Mr P Taverner, the meeting unanimously re-elected Messrs David Owen & Co as Auditors, and authorised the Trustees to determine their remuneration.

10/14 Special Business: Changes to the Memorandum and Articles of Association

The Chairman advised that it had been ten years since the last change to the Memorandum and Articles of Association and due to changes in legislation and other procedures, e.g. electronic communications, changes were now necessary. With the assistance of Ms E Gaunt the documents had been amended and these had been circulated to all members prior to the AGM. Approval was awaited from the Charity Commission, particularly their views on the conflict of interest section – they wouldn't comment on the rest. All the wording was taken from standard text so no problem was anticipated.

A couple of minor drafting errors were highlighted (clauses 41.2, 45.5, 57.1 (should be 56.1), 70.1.5) and would be corrected. Concern was expressed on the following:

Clause 55 - changes to the signatory procedure on bank payments. The Chairman advised that a Payment Policy was now in place as this could be more easily amended than the Articles, but this would be reviewed at the next Board meeting.

Clause 58 (5) – Conflicted Trustee. Concern that Trustees could be allowed to vote on an item that they are involved with. It would be OK to be involved with discussions but should withdraw when the item was voted upon. Ms Gaunt advised that this was the Charity Commission wording, but she would review.

Clause 13 – Trustees. Shouldn't Trustees be WANHS members? The Chairman advised that this had been deliberate as with a small membership the required skills may not be available – although Trustees were encouraged to become members!

Proposed by Mr P Saunders and seconded by Mr C J Baumber, the meeting AGREED (two abstentions) the **Special Resolution: That, conditional on receiving consent from the Charity Commission, the Articles of Association attached to this Agenda be approved and adopted as the new Articles of Association of the Company in substitution for and to the entire exclusion of the existing Articles of Association (including those provisions which are treated as part of those existing articles by virtue of section 28 of the Companies Act 2006). If such consent is not received within six months of the date of these Resolutions being passed, this Resolution will cease to have effect.**

11/14 Any Other Business

The meeting was opened to members but there were no questions.

The Chairman remarked that at the 2013 AGM presentations had been made to staff to mark their achievement with completion of the Prehistoric Wiltshire Galleries, but with one notable exception. Therefore, on behalf of the Trustees he presented the Director, Mr David Dawson, with a framed photograph of Roundway Down, taken by Alan Cowley.

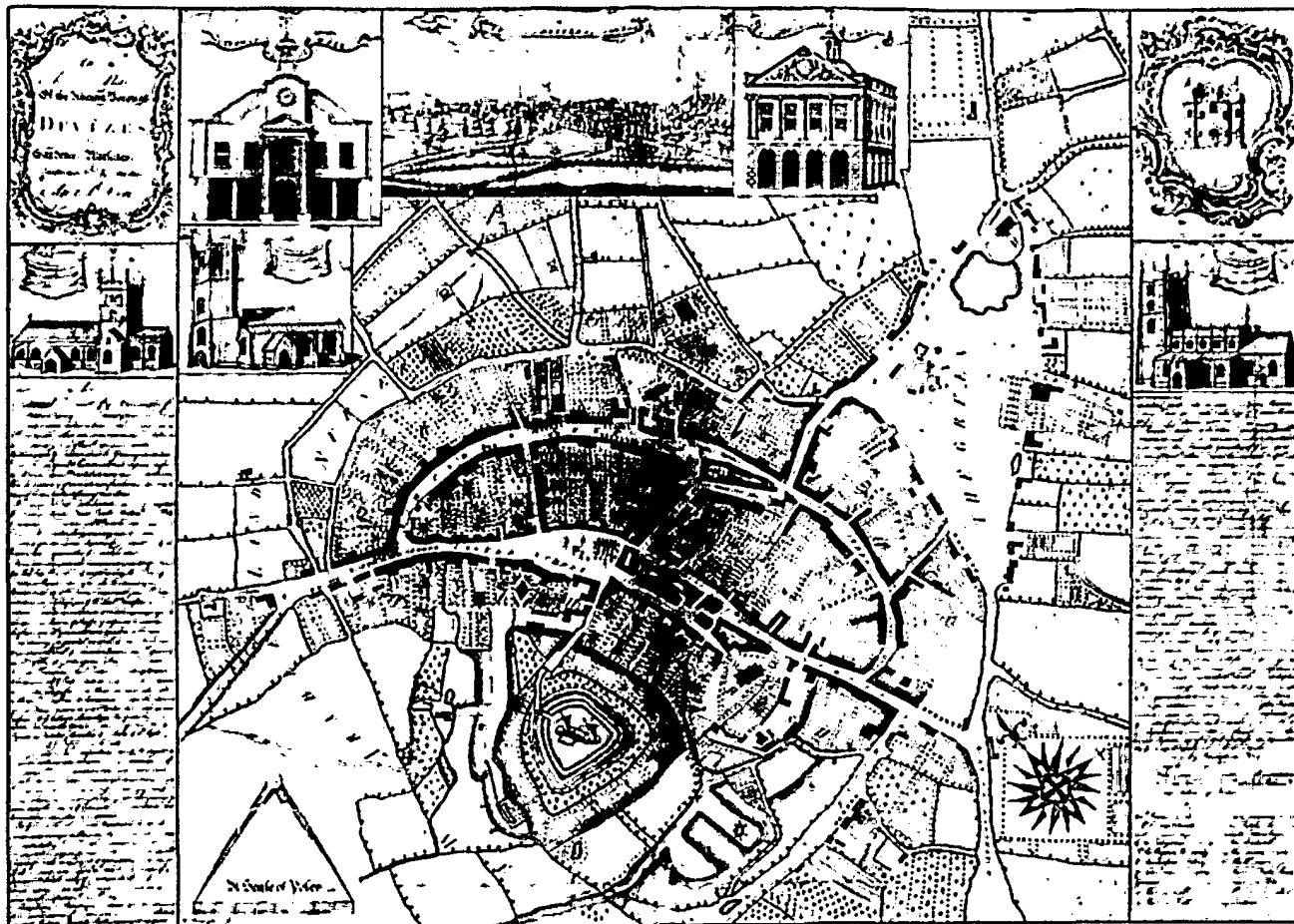
There being no further business the Chairman thanked everyone for attending the meeting. The meeting closed at 3.30pm.

The meeting was followed by a lecture on *the Lacock Cup* by Naomi Speakman, Curator of Late Medieval Europe at the British Museum. The Lacock Cup had been acquired jointly by the British Museum and the Wiltshire Museum. The cup is one of England's most important silver objects. Made in the 1430s, it is one of a handful of Medieval drinking cups for feasting to survive the changing culture of Tudor fashion, the turmoil of the Reformation and the Civil War.

Date of next Meeting:

Saturday 17 October 2015

To be held at the Town Hall, Devizes, Wiltshire



Reproduction of a hand-coloured engraving by Edward Dore, entitled 'A Prospect of Devizes from the East', 1759.

Ink-jet prints, photographed from the original and suitable for framing were made available during the year. Contact the Museum Shop for details.