

REGISTERED COMPANY NUMBER: 3785409 (England and Wales)
REGISTERED CHARITY NUMBER: 1076888

**Report of the Trustees and
Unaudited Financial Statements for the Year Ended 30 September 2016
for
THE SPIRES CENTRE**



Tudor John LLP
Chartered Accountants
Nightingale House
46-48 East Street
Epsom
Surrey
KT17 1HQ

THE SPIRES CENTRE

**Contents of the Financial Statements
for the year ended 30 September 2016**

	Page
Report of the Trustees	1 to 10
Independent Examiner's Report	11
Statement of Financial Activities	12
Balance Sheet	13 to 14
Notes to the Financial Statements	15 to 22
Detailed Statement of Financial Activities	23 to 24

THE SPIRES CENTRE (REGISTERED NUMBER: 3785409)

Report of the Trustees for the year ended 30 September 2016

The trustees who are also directors of the charity for the purposes of the Companies Act 2006, present their report with the financial statements of the charity for the year ended 30 September 2016. The trustees have adopted the provisions of Accounting and Reporting by Charities: Statement of Recommended Practice applicable to charities preparing their accounts in accordance with the Financial Reporting Standard for Smaller Entities (the FRSSE) (effective 1 January 2015).

OBJECTIVES AND ACTIVITIES

Summary of the charity's objects

Spires is an award-winning charity that has been working with homeless and disadvantaged people in Streatham, South London, since 1990. Working with some of the most isolated and vulnerable people in our society, we currently support over 800 men and women every year.

'Inspiring Change Since 1990'

Our vision is to be the best support that we can in helping people move from lives of distress, isolation and insecurity to a future of greater stability and hope. The majority of our clients are homeless or have insecure accommodation, with many also facing complex issues such as long-term unemployment, problems with poor mental and physical health, addiction and substance abuse, or are imprisoned by sex work and suffering from sexual violence and trauma.

With the help of our 100+ strong volunteer team, we provide a range of services including our Rough Sleepers Space every weekday; twice-weekly women-only sessions; and a full adult learning timetable offering free classes and workshops. In addition to our centre services, our Spires Streetlink project provides outreach sessions to support women involved in sex work. Our Streetlink work aims to improve sex workers' personal and sexual safety and empower them to make lasting and positive life choices.

We provide a holistic approach in our support and recognise that effective partnership working with external agencies plays a significant role in being able to offer our clients a flexible and inclusive service that helps to empower each individual to tackle the root causes of their problems and to inspire long-lasting change.

Significant activities

The core of Spires' work is the provision of developmental services for individuals who are homeless and disadvantaged by their life circumstances. Although our centre allows us to deal with people's immediate needs (food, showers and a change of clothes), our aim is to break the cycle of homelessness and disadvantage and to help our clients build resilience and the need for crisis intervention. Therefore, all of our services have been developed to focus on longer-term solutions. These services include one-to-one key worker support, housing and benefits advice, tenancy support, mental health support, primary healthcare clinics, drug and alcohol advice and referrals, and specialist work with women involved in sex work and other vulnerable women as well as a full range of adult learning activities.

Many individuals access Spires because they know they will get professional support and advice and good links with external specialist agencies. Others come because they struggle to fit into broader society, have little support or encouragement to move forward with their lives and have little opportunity elsewhere to build a social network of support. The aim for all of our service users, whatever their starting point, is that they will receive a level of support that will increase their confidence and enable them to make change and manage their own lives in a positive and fulfilling way.

THE SPIRES CENTRE (REGISTERED NUMBER: 3785409)

**Report of the Trustees
for the year ended 30 September 2016**

Significant activities (cont)

Spires has always been committed to finding solutions, particularly for those who are not eligible for support from statutory services and this has been of particular importance over the last year. In a year that has seen the number of those rough sleeping in the UK double, it is of paramount importance that we continue to offer our clients the chance to build the tools and confidence to find their own solutions to overcoming homelessness and social exclusion. Some clients may only need to visit us once. They have their immediate needs provided for and can be referred straight into the appropriate agency. Our more isolated and entrenched clients however will often take a lot longer. They have particularly chaotic lifestyles, and for them, progress can be attending a meeting on time, visiting our outreach nurse or attending one of our drop-in adult learning classes.

Our Spires Streetlink project continues to be the major provider of outreach services to street based sex workers in South London delivering high quality services to women in need. During 2016 we were delighted when through the receipt of extra funding we were able to expand these services to also support women and other individuals sex working indoors. We have also been able to extend our centre services to include the Spires Sanctuary, an evening drop in held once a week for sex workers, transgender and people from the LGBTQ community who are involved in indoor sex work.

Linking our clients to appropriate service providers both within Spires and those from external agencies remains a key objective for this project. Having been working with those involved in sex work or those at risk of becoming involved since 1999, our experience tells us that it is a harsh reality that majority of the women we work with are facing multiple complex issues. Sexual and domestic violence as well as issues of unemployment, addiction and insecure housing are common themes. Many women have also been in care, and are dealing with the trauma of child abuse; others have been in and out of prison. To that end, we have forged many local partnerships over the years with other voluntary and statutory services including the police, refuges and local authorities to ensure that our clients get the best support possible.

Our Adult Learning Centre underpins all of our client work at Spires and we continue to specialise in offering adult learning opportunities for people in the community who are often excluded from conventional learning. We believe that education and employment are the main routes out of poverty and an important way of stopping the vicious circle of homelessness. As part of the Lambeth Adult Learning Service (Ofsted rated 2 - Good), our aim is to ensure there are no barriers to learning. Even our clients with the most vulnerable and chaotic lifestyles are encouraged to participate. We deliver easily accessible courses, while also offering an opportunity to learn in a positive and supportive environment. Our tutors help people to acquire the skills that will enable them to progress further with either more training or employment opportunities.

Through all of our services at Spires, we believe that by offering consistent, practical support and long term guidance, we will enable our clients to have the opportunity to be able to climb out of their cycle of poverty and disadvantage and rebuild their lives.

FINANCIAL REVIEW

Review of the charity's financial performance and position

The Statement of Financial Activities shows that incoming resources were 42.5% higher (2015 - 13.8%) in the year at £574,285. Net incoming resources in the year were £44,428 (2015 outgoing resources of £90,175). Included in the current year's financial figures are depreciation and losses on fixed asset disposals totalling £13,756, both of which are non cash items.

FINANCIAL REVIEW

The table of restricted income included in note 5 to the Financial Statements sets out the levels of grant funding received.

Net assets in the balance sheet of £314,750 at the year end include functional fixed assets of £46,835 which to all intents and purposes are sunk costs. £65,974 of this relates to restricted funds, the balance of unrestricted funds shows a surplus of £83,836.

THE SPIRES CENTRE (REGISTERED NUMBER: 3785409)

Report of the Trustees for the year ended 30 September 2016

Principal funding sources

A combination of funding from grant-making trusts and contracts with statutory funders has enabled the continuation of Spires's essential services to individuals in need. Spires remains equally appreciative of financial and in-kind support from many individuals, church communities, schools and supporters that continue to support our work each year so generously.

Grants from trusts account for approximately 80% of our annual income, with contracts and other assistance completing the picture at Spires. In an uncertain climate, this combination of funding has enabled us to continue to deliver all our services and provide the security needed to make plans for the period ahead. The challenge for all small organisations like Spires is to achieve adequate and longer term funding in to the future.

Principal financial management policies

Spires has a simple financial structure and model revolving around the need to sustain a breakeven position, hopefully supported by a prudent level of free reserves. Surplus funds are maintained on bank deposit so as to maximise the opportunity to earn interest. The Trustees review cash flow projections for a year ahead at each meeting and efforts to maintain grant funding are tailored according to the relative risk of activities running out of financial support. A key challenge is balancing the effort made to raise funds in relation to each activity's relative 'attraction' to potential funding sources.

Reserves policy

Free reserves are unrestricted funds not invested in fixed assets, designated for specific purposes or otherwise committed. In the current year, free reserves are a surplus of £62,975 (2015 deficit of £22,782).

The Trustees have established a policy of aiming to maintain free reserves of between three and six months of total resources expended, which equates to a figure of between £132,500 and £265,000. The Trustees are of the opinion that reserves within this range is necessary to provide effective management and maintenance of services.

Restricted funds represent funds received towards capital items, and represent the net book value of such items along with an emergency fund which is to be held in reserve towards the costs in the event that the centre were forced to close.

FUTURE PLANS

Spires trustees and staff, together with our many volunteers continue to work hard to maintain and improve our essential services. However, an on-going challenge for Spires, along with so many charitable organisations, is the constant need to raise sufficient funding to enable the continued provision of our services. In a year where Government statistics show rough sleeping has doubled since 2010 and the cuts to many local and pan-London services continue, particularly within mental health and women's services, we are seeing higher numbers of clients present at Spires than ever before.

As we continue to develop our strategic direction for the next 3 to 5 years, our main aim for the future is to plan and aim for growth whilst ensuring we maintain and protect the core aspects of our work with rough sleepers and vulnerable women through our Streetlink model. The board also recognises and wishes to maintain the self-referral and free nature of our service as it is seen by all to be fundamental to Spires' values and its mission and ultimately it's success.

During the year we have been largely successful with our fundraising and would like to thank all of those who support our work financially. The challenge however remains on-going and requires constant attention.

Spires' client's needs are often complex and challenging and increasingly seem to fall outside of statutory services remits so we have developed partnerships with other organisations and this work will continue to be a cornerstone in our approach in the future. Spires' collaborative approach has enabled us to achieve positive outcomes for our service users and our intention is to build on these working partnerships allowing us to offer our clients real opportunities to rebuild their lives so they can live positive and independent lives once more.

THE SPIRES CENTRE (REGISTERED NUMBER: 3785409)

**Report of the Trustees
for the year ended 30 September 2016**

STRUCTURE, GOVERNANCE AND MANAGEMENT

Review of the year

The last twelve months has seen some positive changes for Spires and also a year of reaching many of the objectives we had set for the organisation and we are confident that we are well placed to continue building on our gains for the oncoming year.

We welcomed back our Chief Executive, Lucy Barrett from maternity leave in January 2016 (having been off since May 2015) and we would like to take the opportunity to thank both Rob Malkin, our Centre Services Manager who acted as Interim Director and the rest of the staff team who managed so well in the period that our Chief Executive was on leave. However January also sadly saw the retirement of our Chair, Bernard Wynne, in the same month. All of those associated with Spires will join us in thanking Bernard for his dedicated service to Spires over the many years that he was involved as a mentor, trustee and Chair.

Sherine Krause took over as Chair of the Board in January 2016, with main priorities for the year to include a review of the organisation's governance. This included working with the board to ensure our Memorandum and Articles were updated and reflected best practice as suggested by the Charity Commission. Working with solicitors Bircham Dyson and Bell, this has now been completed and submitted to the Charity Commission and Companies House.

Further work has continued between the Treasurer, the Chair, and Chief Executive to review our financial systems and processes to ensure that they continue to provide valuable management information. Since the review was completed, new reporting has been introduced and more in-depth budget analysis has meant that we have been able to undertake much more effective financial planning as we move forward. Our Fundraising Strategy initially put in place during 2015 has also since been updated and we are pleased that objectives set for the first year have been met. These objectives included the diversification of our funding streams, and the securing of multi-year funding, particularly for our Rough Sleeper Space to ensure we are able to safeguard our services for those who often find themselves excluded by many statutory homelessness services.

Furthermore a full Risk Review was completed by the trustee board during the period and new reporting has since been introduced where priority and/or newly identified risks are reviewed at each trustee meeting.

Governing Document

Spires is a private charitable company limited by guarantee, having no share capital, governed by its memorandum and articles of association. The liability of each member in the event of a winding up is £10. The charitable company does not use 'Limited' in its name by virtue of section 30 of The Companies Act 2006. The affairs of the company are managed by the Trustees who are obliged to meet at least four times a year for this purpose. The Trustees may number between three and ten.

The post of Trustee

Trustees are recruited through advertising followed by an application and interview. Subsequent appointment is by an ordinary resolution of the Board.

Trustees are subject to periodic retirement and reappointment.

THE SPIRES CENTRE (REGISTERED NUMBER: 3785409)

Report of the Trustees for the year ended 30 September 2016

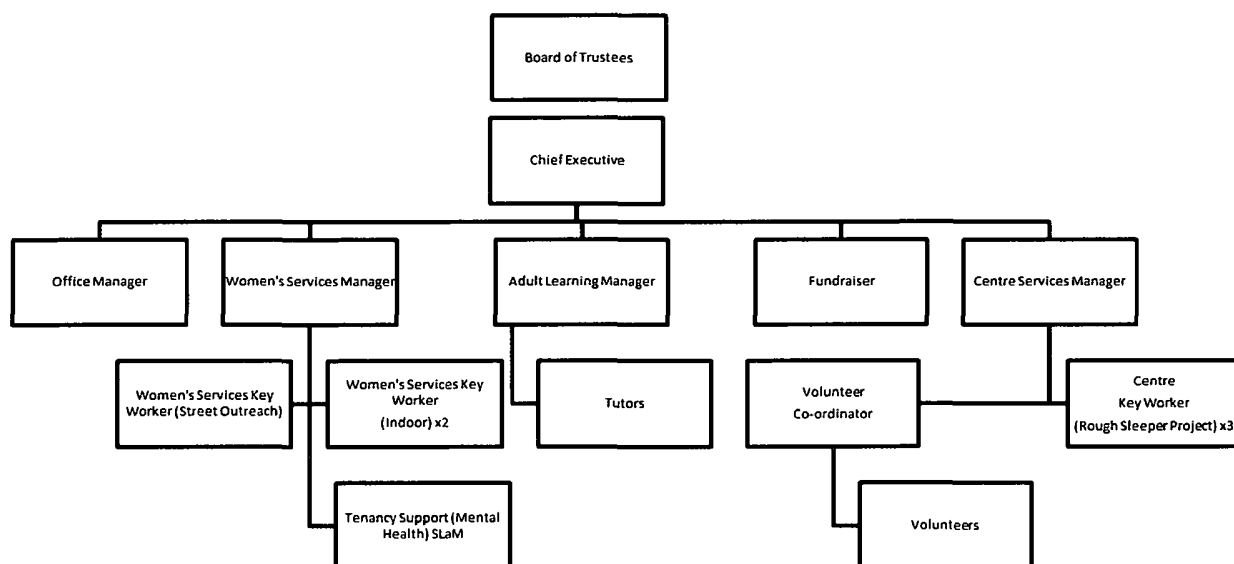
Trustee induction and training

New Trustees visit the Centre to meet staff, volunteers and clients and to understand fully the nature of Spires work. Access to the staff handbook and all policies and procedures relating to governance and delivery of Spires work is essential.

New Trustees are encouraged to shadow Spires's key staff by arrangement. Further specific skills training deemed necessary to undertake the role of Trustee may be arranged in conjunction with Spires Chair of Trustees and Spires Chief Executive.

Management and organisation

The Trustees meet every two months to coordinate the general strategy, direction and management of Spires, receiving detailed reports from Spires Chief Executive and other officers as required. The day-to-day affairs of Spires are delegated to the Chief Executive. The organisation chart is as follows:



Related parties

Spires is committed to working in partnership with other agencies both statutory and voluntary. These relationships enable Spires's staff to access any additional specialist help our clients need, and prevents duplication of work. Key partnerships include the volunteer centres in Lambeth, Merton and Croydon, specialist drug and alcohol treatment and support agencies, primary healthcare services, providers of both emergency and permanent accommodation, local authority social care teams and adult education and training partners and providers. Membership and agency link organisations are listed in section 1 of this report.

THE SPIRES CENTRE (REGISTERED NUMBER: 3785409)

**Report of the Trustees
for the year ended 30 September 2016**

STRUCTURE, GOVERNANCE AND MANAGEMENT

Risk management

Spires has achieved Level 2 in all areas of the PQASSO Quality Assurance system (practical quality assurance system for small organisations). Spires continues to review and document its internal control procedures.

The process of risk assessment and management is a continuous process and applies not only to all clients who are supported at Spires, but to premises, visiting external partner agencies and staff, volunteers, placements, equipment, and Spires Streetlink's outreach vehicle. A full risk review was completed during the year and the Trustees are satisfied that effective systems are in place to mitigate perceived risks. Priority and new risks are identified and reviewed at each trustee meeting. Spires management and staff team are continuously involved in planning, implementing and reviewing clients' support plans to reflect identified risks, and the on-going employment of safe and effective work practices in line with Spires policies and procedures. Spires' management also ensures that all staff that key work clients are trained to carry out full risk assessments, and know when to seek extra support and more specialist internal and external advice.

REFERENCE AND ADMINISTRATIVE DETAILS

Registered Company number

3785409 (England and Wales)

Registered Charity number

1076888

Registered office

8 Tooting Bec Gardens
Streatham
London
SW16 1RB

Trustees

The Revd Mandy Hodgson	- resigned 1.12.15
Mr Bernard Wynne	- resigned 20.1.16
Mr Jim McAuslan	- resigned 18.11.15
Mr Simon Wentworth Pearson	- resigned 20.1.16
Ms Janis Wharton	
Mr John Clark McKelvie	
Mr Andrew Campbell	
Mrs Louise Eyles	
Mr Andrew Johnson	
Ms Sherine Krause	
Mr Patrick McCabe	- resigned 3.5.16
Miss Chloe Warner	
Ms Helen Schofield	- appointed 26.11.15

The respective Incumbents are Trustees/Directors by virtue of their office.

The Directors of the charitable company are Trustees for the purposes of charity law and throughout this report are collectively referred to as Trustees.

Company Secretary

Mrs Lucy Barrett

THE SPIRES CENTRE (REGISTERED NUMBER: 3785409)

**Report of the Trustees
for the year ended 30 September 2016**

Independent examiner

Tudor John LLP
Chartered Accountants
Nightingale House
46-48 East Street
Epsom
Surrey
KT17 1HQ

Bankers

National Westminster Bank plc
Streatham Branch
54 Streatham High Road
London SW16 1XE

and

Bank of Scotland
600 Gorgie Road
Edinburgh
EH11 3XP

The Spires Centre is a member of:

Homeless Link
Institute of Fundraising
Lambeth Community Empowerment Network
Lambeth Case Review Panel
Lambeth VAWG Forum (Violence Against Women and Girls)
Lambeth Voluntary Action Council
National Council for Voluntary Organisations (NCVO)
Prostitution Action Group - Lambeth
UKNSWP - UK Network of Sex Work Projects
Women's Resource Centre

Principal Agency Links:

Ace of Clubs
Alcohol Recovery Project ARP Choices Project
Alone in London
Battersea Drug & Alcohol Services
City Lit
City Road (Intervention Detox)
Clearing House (Pan London)
Community Drugs Project
Community Safety Services
Crime Reduction Initiative (CRI)
Emmaus Lambeth
Equinox
Evolve (Blenheim CDP)
Faith in Action – Merton
Family Learning
First Steps Trust
Foundation 66
Gaia (Refuge)
Glass Door Homeless Charity
His Church Charity
Independent Offender Management

THE SPIRES CENTRE (REGISTERED NUMBER: 3785409)

**Report of the Trustees
for the year ended 30 September 2016**

Principal Agency Links (cont):

Job Centre Plus
Kairos Community
Kingston University
Lambeth Adult Learning
Lambeth Alcohol Services - Lorraine Hewitt House
Lambeth Community Mental Health Services
Lambeth Safer Streets Team
Lambeth Social Services (Adult & CYPS)
Lambeth Tenancy Services
London Housing Trust (LHT)
Maudsley AAU
ODAAT
Open College Network London Region (OCN London)
Prince's Trust
Probation
Rape Crisis
SOFAR (Ex Services)
Shelter From the Storm
SMART (services for drug users)
South London & Maudsley NHS Trust (SLAM)
St. Georges Hospital GUM Clinic
St Mungos (Chrysalis Project)
St Giles Trust
St. Mungo's (Chrysalis Project)
START (Mental Health Services for Rough Sleepers)
STOLL (Ex Services)
Street Link
Terrence Higgins Trust
Thames Reach
The Beth Centre
The Challenge Network
The Nehemiah Project
The Pavement
The Robes Project
Three Boroughs Primary Healthcare Team
Trust (working with women involved in sex work)
Ugly Mugs (UKNSWP)
Violence Against Women & Girls Forum - Lambeth
Volunteer Centre Croydon Volunteer Centre Lambeth
Volunteer Centre Merton
Volunteer Centre Wandsworth
Wandsworth Public Health Team
West London Churches (Winter Shelter)
Women in Prison
Wrap up London (Hands on London)

THE SPIRES CENTRE (REGISTERED NUMBER: 3785409)

**Report of the Trustees
for the year ended 30 September 2016**

REFERENCE AND ADMINISTRATIVE DETAILS

Funders: We are very grateful to the organisations that have been substantial funders of The Spires Centre in the last 12 months:

All Saints Church, Benhilton
Awards for All (Big Lottery)
Big Lottery Fund
Bishop Thomas Grant School
Chaucer Foundation
Clutton Black Charitable Trust
Comic Relief
Croydon Lodge of Unity
English Martyrs - Streatham
Finnis Scott Foundation
Garfield Weston
Goldsmiths' Company Charity
Google UK Ltd
Highfields Trust
Inner London Magistrates Court Trust
Kingston Smith LLP
Lillian Nash Fund
Little Company of Mary Generalate
Little Lights
Lloyds TSB Foundation
London Borough of Lambeth - Lambeth Adult Learning Services
London School of Economics Student Union RAG
Miranda Bennion Charitable Trust
Smart Energy GB
South London and Maudsley NHS Trust (SLaM)
St. Faith - North Dulwich
St. Leonards Church - Streatham
St. Luke's Church - Battersea
St. Mary & St. John the Divine, Balham
St. Mary's Church - Merton
St. Peter's Church - West Norwood
Stavros Niarchos Foundation
Streatham Vale Baptist Church
StreetSmart
Tadworth Church
The 29th May 1961 Charitable Trust
The Alexandra Trust
The Church of English Martyrs - Streatham
The Hilden Charitable Fund
The Mrs Smith & Mount Trust
The Old Vic Theatre
The Peter Minet Trust
The White Benevolent fund
The White Stuff Foundation
The Woodroffe Benton Foundation
The Worshipful Company of Chartered Secretaries & Administrators
The Worshipful Company of Plumbers
The Wyndham Charitable trust
Thrale Almshouses
Zurich Community Trust

THE SPIRES CENTRE (REGISTERED NUMBER: 3785409)

**Report of the Trustees
for the year ended 30 September 2016**

REFERENCE AND ADMINISTRATIVE DETAILS

Approved by order of the board of trustees on 29th March 2017 and signed on its behalf by:



.....
Miss Chloe Warner - Trustee

**Independent Examiner's Report to the Trustees of
The Spires Centre (Registered number: 3785409)**

I report on the accounts for the year ended 30 September 2016 set out on pages eleven to twenty one.

Respective responsibilities of trustees and examiner

The charity's trustees (who are also the directors for the purposes of company law) are responsible for the preparation of the accounts. The charity's trustees consider that an audit is not required for this year (under Section 144(2) of the Charities Act 2011 (the 2011 Act)) and that an independent examination is required. The charity's gross income exceeded £250,000 and I am qualified to undertake the examination by being a qualified member of ICAEW.

Having satisfied myself that the charity is not subject to audit under company law and is eligible for independent examination, it is my responsibility to:

- examine the accounts under Section 145 of the 2011 Act
- to follow the procedures laid down in the General Directions given by the Charity Commission (under Section 145(5)(b) of the 2011 Act); and
- to state whether particular matters have come to my attention.

Basis of the independent examiner's report

My examination was carried out in accordance with the General Directions given by the Charity Commission. An examination includes a review of the accounting records kept by the charity and a comparison of the accounts presented with those records. It also includes consideration of any unusual items or disclosures in the accounts, and seeking explanations from you as trustees concerning any such matters. The procedures undertaken do not provide all the evidence that would be required in an audit, and consequently no opinion is given as to whether the accounts present a 'true and fair view' and the report is limited to those matters set out in the statements below.

Independent examiner's statement

In connection with my examination, no matter has come to my attention:

- (1) which gives me reasonable cause to believe that, in any material respect, the requirements
 - to keep accounting records in accordance with Section 386 and 387 of the Companies Act 2006; and
 - to prepare accounts which accord with the accounting records, comply with the accounting requirements of Sections 394 and 395 of the Companies Act 2006 and with the methods and principles of the Accounting and Reporting by Charities: Statement of Recommended Practice applicable to charities preparing their accounts in accordance with the Financial Reporting Standard for Smaller Entities (the FRSSE) (effective 1 January 2015)

have not been met; or

- (2) to which, in my opinion, attention should be drawn in order to enable a proper understanding of the accounts to be reached.

Tudor John LLP

Tudor John Chartered Accountants
ICAEW
Tudor John LLP
Chartered Accountants
Nightingale House
46-48 East Street
Epsom
Surrey
KT17 1HQ

Date: 3rd May 2017

THE SPIRES CENTRE

**Statement of Financial Activities
(Incorporating an Income and Expenditure Account)
for the year ended 30 September 2016**

		Unrestricted funds	Restricted funds	Total	2016 funds	Total	2015 funds
	Notes	£	£		£		£
INCOME AND ENDOWMENTS FROM							
Donations and legacies		78,022	-	78,022		69,573	
Charitable activities							
Streetlink		-	-	-		4,021	
Volunteering		-	43,311	43,311		20,340	
Adult Learning		-	83,587	83,587		85,245	
Tenancy Support		-	27,670	27,670		29,158	
Rough sleepers and core Services		5,000	98,541	103,541		71,368	
Streetlink funded by Big Lottery		-	135,468	135,468		111,157	
Other Projects		-	16,635	16,635		-	
Flat Work		-	32,849	32,849		-	
Trainees		-	29,099	29,099		-	
Other trading activities	2	18,382	-	18,382		7,922	
Investment income	3	5,721	-	5,721		4,150	
Total		107,125	467,160	574,285		402,934	
EXPENDITURE ON							
Raising funds		-	21,759	21,759		35,979	
Charitable activities							
Streetlink		-	-	-		6,638	
Volunteering		-	54,940	54,940		20,341	
Adult Learning		-	83,504	83,504		85,244	
Tenancy Support		-	35,918	35,918		29,158	
Rough sleepers and core Services		9,893	105,297	115,190		204,819	
Fundraiser		-	1,526	1,526		-	
Streetlink funded by Big Lottery		-	135,754	135,754		111,157	
Other Projects		-	14,199	14,199		-	
Flat Work		-	33,359	33,359		-	
Trainees		-	33,708	33,708		-	
Total		9,893	519,964	529,857		493,336	
NET INCOME/(EXPENDITURE)		97,232	(52,804)	44,428		(90,402)	
Transfers between funds	12	(6,442)	6,442	-		-	
Net movement in funds		90,790	(46,362)	44,428		(90,402)	
RECONCILIATION OF FUNDS							
Total funds brought forward		157,984	112,338	270,322		360,724	
TOTAL FUNDS CARRIED FORWARD		248,776	65,974	314,750		270,322	

The notes form part of these financial statements

THE SPIRES CENTRE (REGISTERED NUMBER: 3785409)

**Balance Sheet
At 30 September 2016**

		Unrestricted funds	Restricted funds	Total	2016 funds	Total	2015 funds
	Notes	£	£		£		£
FIXED ASSETS							
Tangible assets	9	30,861	15,974		46,835		45,668
CURRENT ASSETS							
Debtors	10	11,205	6,867		18,072		16,645
Cash at bank		<u>223,350</u>	<u>153,200</u>		<u>376,550</u>		<u>349,668</u>
		234,555	160,067		394,622		366,313
CREDITORS							
Amounts falling due within one year	11	(16,640)	(110,067)		(126,707)		(141,659)
NET CURRENT ASSETS		<u>217,915</u>	<u>50,000</u>		<u>267,915</u>		<u>224,654</u>
TOTAL ASSETS LESS CURRENT LIABILITIES		<u>248,776</u>	<u>65,974</u>		<u>314,750</u>		<u>270,322</u>
NET ASSETS		<u>248,776</u>	<u>65,974</u>		<u>314,750</u>		<u>270,322</u>
FUNDS	12						
Unrestricted funds					248,776		157,984
Restricted funds					<u>65,974</u>		<u>112,338</u>
TOTAL FUNDS					<u>314,750</u>		<u>270,322</u>

The notes form part of these financial statements

THE SPIRES CENTRE (REGISTERED NUMBER: 3785409)

**Balance Sheet - continued
At 30 September 2016**

The charitable company is entitled to exemption from audit under Section 477 of the Companies Act 2006 for the year ended 30 September 2016.

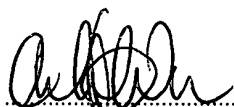
The members have not required the charitable company to obtain an audit of its financial statements for the year ended 30 September 2016 in accordance with Section 476 of the Companies Act 2006.

The trustees acknowledge their responsibilities for

- (a) ensuring that the charitable company keeps accounting records that comply with Sections 386 and 387 of the Companies Act 2006 and
- (b) preparing financial statements which give a true and fair view of the state of affairs of the charitable company as at the end of each financial year and of its surplus or deficit for each financial year in accordance with the requirements of Sections 394 and 395 and which otherwise comply with the requirements of the Companies Act 2006 relating to financial statements, so far as applicable to the charitable company.

These financial statements have been prepared in accordance with the special provisions of Part 15 of the Companies Act 2006 relating to small charitable companies and with the Financial Reporting Standard for Smaller Entities (effective January 2015).

The financial statements were approved by the Board of Trustees on 29th March 2017 and were signed on its behalf by:


.....
Miss Chloe Warner -Trustee

The notes form part of these financial statements

THE SPIRES CENTRE

Notes to the Financial Statements for the year ended 30 September 2016

1. ACCOUNTING POLICIES

BASIS OF PREPARING THE FINANCIAL STATEMENTS

The financial statements of the charitable company have been prepared in accordance with the Charities SORP (FRSSE) 'Accounting and Reporting by Charities: Statement of Recommended Practice applicable to charities preparing their accounts in accordance with the Financial Reporting Standard for Smaller Entities (the FRSSE) (effective 1 January 2015)', the Financial Reporting Standard for Smaller Entities (effective January 2015) and the Companies Act 2006. The financial statements have been prepared under the historical cost convention.

INCOME

All income is recognised in the Statement of Financial Activities once the charity has entitlement to the funds, it is probable that the income will be received and the amount can be measured reliably.

EXPENDITURE

Liabilities are recognised as expenditure as soon as there is a legal or constructive obligation committing the charity to that expenditure, it is probable that a transfer of economic benefits will be required in settlement and the amount of the obligation can be measured reliably. Expenditure is accounted for on an accruals basis and has been classified under headings that aggregate all cost related to the category. Where costs cannot be directly attributed to particular headings they have been allocated to activities on a basis consistent with the use of resources.

TANGIBLE FIXED ASSETS

Depreciation is provided at the following annual rates in order to write off the cost less estimated residual value of each asset over its estimated useful life.

Improvements to property	- 10% on cost
Fixtures and fittings	- 25% on reducing balance
Motor vehicles	- 25% on reducing balance

Assets costing less than £500 are not capitalised but expense through the SoFA.

TAXATION

As a registered charity, the company is not liable to income tax on its various forms of income on the basis that it is applied for charitable purposes. Income tax is recoverable on gift and donations and is accounted for as it becomes receivable.

FUND ACCOUNTING

Unrestricted funds can be used in accordance with the charitable objectives at the discretion of the trustees.

Restricted funds can only be used for particular restricted purposes within the objects of the charity. Restrictions arise when specified by the donor or when funds are raised for particular restricted purposes.

Restricted incoming resources which relate to fixed assets expenditure are transferred to unrestricted funds following their utilisation to the extent that such expenditure relates to the furtherance of direct charitable (unrestricted) activities. Depreciation is thereafter accounted for as an expense within unrestricted funds.

Accumulated funds represent aggregate retained amounts, both restricted and unrestricted, which finance the company's operation. They comprise investment in fixed assets and working capital.

Further explanation of the nature and purpose of each fund is included in the notes to the financial statements.

HIRE PURCHASE AND LEASING COMMITMENTS

Rentals paid under operating leases are charged to the Statement of Financial Activities on a straight line basis over the period of the lease.

THE SPIRES CENTRE

**Notes to the Financial Statements - continued
for the year ended 30 September 2016**

2. OTHER TRADING ACTIVITIES

	2016	2015
	£	£
Fundraising Trusts	10,438	4,965
Fundraising Events	<u>7,944</u>	<u>2,957</u>
	<u><u>18,382</u></u>	<u><u>7,922</u></u>

3. INVESTMENT INCOME

	2016	2015
	£	£
Rents received	4,450	3,405
Sundry income	136	-
Deposit account interest	<u>1,135</u>	<u>745</u>
	<u><u>5,721</u></u>	<u><u>4,150</u></u>

4. SUPPORT COSTS

	Management	Governance costs	Totals
	£	£	£
Volunteering	16,035	1,488	17,523
Adult Learning	15,997	1,488	17,485
Tenancy Support	363	-	363
Rough sleepers and core Services	29,764	1,488	31,252
Fundraiser	1,526	-	1,526
Streetlink funded by Big Lottery	18,171	1,488	19,659
Other Projects	10,984	1,362	12,346
Flat Work	8,021	(75)	7,946
Trainees	<u>13,393</u>	<u>1,871</u>	<u>15,264</u>
	<u><u>114,254</u></u>	<u><u>9,110</u></u>	<u><u>123,364</u></u>

Support costs, included in the above, are as follows:

THE SPIRES CENTRE

Notes to the Financial Statements - continued
for the year ended 30 September 2016

4. SUPPORT COSTS – continued
Management

	Volunteering	Adult Learning	Tenancy Support	Rough Sleepers and core services	Fundraiser	Streetlink funded by big Lottery	Other Projects	Flat work	Trainees	Total Activities 2016	Total Activities 2015
	£	£	£	£	£	£	£	£	£	£	£
Other operating leases	2,506	2,506	-	2,506	-	2,506	1,756	1,131	2,089	15,000	15,001
Rates and Water	376	376	-	377	-	377	193	377	238	2,314	1,670
Insurance	1,769	1,769	-	1,769	-	1,769	1,100	907	999	10,082	13,171
Light and heat	1,274	1,275	-	1,275	-	1,275	820	427	1,177	7,523	9,220
Telephone	1,462	1,461	-	1,461	-	1,461	1,103	819	1,260	9,027	6,695
Postage and stationery	1,030	1,030	-	1,030	-	1,030	717	523	934	6,294	6,376
Sundries	246	246	-	246	-	245	319	24	269	1,595	407
Cleaning	1,918	1,918	-	1,918	-	1,918	1,531	943	1,636	11,782	12,238
Repairs and renewals	5,098	5,098	-	5,098	-	5,098	3,391	2,051	4,655	30,489	21,604
Training and recruitment	287	206	131	215	1,378	1,767	-	739	-	4,721	3,991
Subscriptions	55	54	-	54	-	54	54	25	136	432	898
Staff Travel	14	58	232	59	150	671	-	55	-	1,239	1,642
Depreciation of tangible assets	-	-	-	12,938	-	-	-	-	-	12,938	14,436
Loss on disposal of tangible fixed assets	-	-	-	818	-	-	-	-	-	818	177
	<u>16,035</u>	<u>15,997</u>	<u>363</u>	<u>29,764</u>	<u>1,526</u>	<u>18,171</u>	<u>10,984</u>	<u>8,021</u>	<u>13,393</u>	<u>114,254</u>	<u>107,526</u>

THE SPIRES CENTRE

Notes to the Financial Statements - continued
for the year ended 30 September 2016

4. SUPPORT COSTS – continued
Governance costs

	Volunteering	Adult Learning	Tenancy Support	Rough Sleepers and core services	Fundraiser	Streetlink funded by big Lottery	Other Projects	Flat work	Trainees	Total Activities 2016	Total Activities 2015
	£	£	£	£	£	£	£	£	£	£	£
Accountancy and legal fees	1,290	1,290	-	1,291	-	1,291	1,224	(169)	1,719	7,936	2,219
Bank interest	198	198	-	197	-	197	138	94	152	1,174	1,102
Auditors' remuneration	-	-	-	-	-	-	-	-	-	-	5,506
Trustees Indemnity insurance	-	-	-	-	-	-	-	-	-	-	85
	<u>1,488</u>	<u>1,488</u>	<u>-</u>	<u>1,488</u>	<u>-</u>	<u>1,488</u>	<u>1,362</u>	<u>(75)</u>	<u>1,871</u>	<u>9,110</u>	<u>8,912</u>

5. NET INCOME/(EXPENDITURE)

Net income/(expenditure) is stated after charging/(crediting):

	2016	2015
	£	£
Auditors remuneration	-	5,506
Depreciation - owned assets	12,941	14,436
Other operating leases	15,000	15,001
Deficit on disposal of fixed asset	<u>818</u>	<u>177</u>

THE SPIRES CENTRE

**Notes to the Financial Statements - continued
for the year ended 30 September 2016**

6. TRUSTEES' REMUNERATION AND BENEFITS

There were no trustees' remuneration or other benefits for the year ended 30 September 2016 nor for the year ended 30 September 2015.

TRUSTEES' EXPENSES

There were no trustees' expenses paid for the year ended 30 September 2016 nor for the year ended 30 September 2015.

7. STAFF COSTS

	2016 £	2015 £
Wages and salaries	312,619	285,511
Social security costs	29,178	25,298
Other pension costs	<u>9,908</u>	<u>8,237</u>
	<u>351,705</u>	<u>319,046</u>

No member of staff received remuneration in excess of £60,000.

8. COMPARATIVES FOR THE STATEMENT OF FINANCIAL ACTIVITIES

	Unrestricted funds £	Restricted funds £	Total funds £
INCOME AND ENDOWMENTS FROM			
Donations and legacies	69,570	-	69,570
Charitable activities			
Streetlink	-	4,021	4,021
Volunteering	-	20,340	20,340
Adult Learning	-	85,245	85,245
Tenancy Support	-	29,158	29,158
Rough sleepers and core Services	4,959	66,409	71,368
Streetlink funded by Big Lottery	-	111,157	111,157
Other trading activities	7,922	-	7,922
Investment income	<u>4,150</u>	<u>-</u>	<u>4,150</u>
Total	86,601	316,330	402,931
EXPENDITURE ON			
Raising funds	848	35,131	35,979
Charitable activities			
Streetlink	-	6,636	6,636
Volunteering	-	20,341	20,341
Adult Learning	-	85,245	85,245
Tenancy Support	-	29,159	29,159
Rough sleepers and core Services	151,322	53,497	204,819
Streetlink funded by Big Lottery	<u>-</u>	<u>111,157</u>	<u>111,157</u>
Total	<u>152,170</u>	<u>341,166</u>	<u>493,336</u>
NET INCOME/(EXPENDITURE)	(65,568)	(24,836)	(90,404)

THE SPIRES CENTRE

**Notes to the Financial Statements - continued
for the year ended 30 September 2016**

8. COMPARATIVES FOR THE STATEMENT OF FINANCIAL ACTIVITIES - continued

	Unrestricted funds £	Restricted funds £	Total funds £
Transfers between funds	<u>80,000</u>	<u>(80,000)</u>	<u>-</u>
Net movement in funds	14,432	(104,836)	(90,404)
RECONCILIATION OF FUNDS			
Total funds brought forward	<u>(11,387)</u>	<u>372,111</u>	<u>360,724</u>
TOTAL FUNDS CARRIED FORWARD	<u><u>3,045</u></u>	<u><u>267,275</u></u>	<u><u>270,320</u></u>

9. TANGIBLE FIXED ASSETS

	Improvements to property £	Fixtures and fittings £	Motor vehicles £	Totals £
COST				
At 1 October 2015	48,442	98,131	14,282	160,855
Additions	14,926	-	-	14,926
Disposals	<u>(735)</u>	<u>(12,379)</u>	<u>-</u>	<u>(13,114)</u>
At 30 September 2016	<u>62,633</u>	<u>85,752</u>	<u>14,282</u>	<u>162,667</u>
DEPRECIATION				
At 1 October 2015	33,588	76,690	4,909	115,187
Charge for year	5,241	5,356	2,344	12,941
Eliminated on disposal	<u>(735)</u>	<u>(11,561)</u>	<u>-</u>	<u>(12,296)</u>
At 30 September 2016	<u>38,094</u>	<u>70,485</u>	<u>7,253</u>	<u>115,832</u>
NET BOOK VALUE				
At 30 September 2016	<u>24,539</u>	<u>15,267</u>	<u>7,029</u>	<u>46,835</u>
At 30 September 2015	<u>14,854</u>	<u>21,441</u>	<u>9,373</u>	<u>45,668</u>

10. DEBTORS: AMOUNTS FALLING DUE WITHIN ONE YEAR

	2016 £	2015 £
Other debtors	<u>18,072</u>	<u>16,645</u>

THE SPIRES CENTRE

Notes to the Financial Statements - continued
for the year ended 30 September 2016

11. CREDITORS: AMOUNTS FALLING DUE WITHIN ONE YEAR

	2016	2015
	£	£
Taxation and social security	7,305	5,147
Other creditors	<u>119,402</u>	<u>136,512</u>
	<u>126,707</u>	<u>141,659</u>

12. MOVEMENT IN FUNDS

	At 1.10.15	Net movement in funds	Transfers between funds	At 30.9.16
	£	£	£	£
Unrestricted funds				
General fund	3,044	97,234	(6,442)	93,836
Special Projects fund	<u>154,940</u>	<u>-</u>	<u>-</u>	<u>154,940</u>
	157,984	97,234	(6,442)	248,776
Restricted funds				
Direct Charitable Activities	19,838	(33,868)	30,004	15,974
Support Fund	25,000	-	(25,000)	-
Fundraiser	17,500	(18,938)	1,438	-
Emergency Support Fund	<u>50,000</u>	<u>-</u>	<u>-</u>	<u>50,000</u>
	112,338	(52,806)	6,442	65,974
TOTAL FUNDS	<u>270,322</u>	<u>44,428</u>	<u>-</u>	<u>314,750</u>

Net movement in funds, included in the above are as follows:

	Incoming resources	Resources expended	Movement in funds
	£	£	£
Unrestricted funds			
General fund	107,125	(9,893)	97,234
Restricted funds			
Direct Charitable Activities	467,160	(501,027)	(33,868)
Fundraiser	<u>-</u>	<u>(18,937)</u>	<u>(18,938)</u>
	467,160	(519,964)	(52,806)
TOTAL FUNDS	<u>574,285</u>	<u>(529,857)</u>	<u>44,428</u>

THE SPIRES CENTRE

Notes to the Financial Statements - continued for the year ended 30 September 2016

12. MOVEMENT IN FUNDS - continued

Direct Fund - this fund represents funding received directly in respect of performing the Charitable activities. The value at the end of the year represents the net book value of assets specifically funded for use in these Charitable activities.

Support Fund - this is money received to support the activities of the Charity. The donor has specified that of the remaining £55,000, £30,000 of this fund is for the 2014/15 financial year and £25,000 for the 2015/16 financial year.

Fundraiser - this is money received towards the cost of employing a fundraiser to help generate funds and enable the Charity to improve its financial position.

Emergency Support Fund - this money has been given to the Charity to cover any expenses which may arise in the event that the Charity was forced to close. It is not available for use as day to day funding of the activities.

Special Projects Fund - this money has been provided to support the aims and objects of Spires, money can be withdrawn from the fund only after all trustees have been consulted and a majority have indicated agreement to the expenditure. Trustees have agreed that as far as possible the money should be used for special projects or in exceptional circumstances to support a shortfall in the annual revenue of Spires. In order to preserve the special projects nature of the fund any revenue payments required should be kept to a minimum and in any case must not exceed £50,000 in any one year and only be made available in the most serious of circumstances.

13. RELATED PARTY DISCLOSURES

During the year the Charity received the following donations:

- £1,250 from St Leonards Church, Streatham, where Revd Mandy Hodgkin, a trustee, acted as the Treasurer and Secretary until 1st December 2015.

These donations have all been included within voluntary income in these accounts.

14. DEFERRED INCOME

Incoming resources deferred and accrued at 30th September 2016 are made up of the following:

	B/fwd	Received in year	Released to income in the year	C/fwd
Core Services	60,662	93,613	103,541	50,734
Adult learning	-	93,903	83,587	10,316
Streetlink	51,501	123,763	135,468	39,796
Volunteer Co-ordinator	14,283	29,027	43,310	-
Tenancy Support	(9,843)	30,645	27,669	(6,867)
Flat Work	-	39,099	32,849	6,250
Other Projects	-	19,606	16,635	2,971
Trainees	-	29,099	29,099	-
	<u>116,603</u>	<u>458,755</u>	<u>472,158</u>	<u>103,200</u>

The balance carried forward represents accrued income of £6,867 and deferred income of £110,067 at 30 September 2016 as shown in the notes to the accounts.

THE SPIRES CENTRE

**Detailed Statement of Financial Activities
for the year ended 30 September 2016**

	2016 £	2015 £
INCOME AND ENDOWMENTS		
Donations and legacies		
Other income	-	55
Donation	62,229	53,922
Donations received under gift aid	<u>15,793</u>	<u>15,596</u>
	78,022	69,573
Other trading activities		
Fundraising Trusts	10,438	4,965
Fundraising Events	<u>7,944</u>	<u>2,957</u>
	18,382	7,922
Investment income		
Rents received	4,450	3,405
Sundry income	136	-
Deposit account interest	<u>1,135</u>	<u>745</u>
	5,721	4,150
Charitable activities		
Donations	5,393	13,872
Grants	<u>466,767</u>	<u>307,417</u>
	<u>472,160</u>	<u>321,289</u>
Total incoming resources	574,285	402,934
EXPENDITURE		
Raising donations and legacies		
Wages	17,411	30,000
Fundraising	<u>4,348</u>	<u>5,979</u>
	21,759	35,979
Charitable activities		
Wages	334,294	290,483
Catering	4,171	4,400
Tutors and other services	34,282	39,539
Vehicle running costs	9,486	5,961
Promotional material	<u>2,501</u>	<u>536</u>
	384,734	340,919
Support costs		

This page does not form part of the statutory financial statements

THE SPIRES CENTRE

**Detailed Statement of Financial Activities
for the year ended 30 September 2016**

	2016 £	2015 £
Management		
Other operating leases	15,000	15,001
Rates and water	2,314	1,670
Insurance	10,082	13,171
Light and heat	7,523	9,220
Telephone	9,027	6,695
Postage and stationery	6,294	6,376
Sundries	1,595	407
Cleaning	11,782	12,238
Repairs and renewals	30,489	21,604
Training and recruitment	4,721	3,991
Subscriptions	432	898
Staff Travel	1,239	1,642
Improvements to property	5,240	5,334
Fixtures and fittings	5,355	5,978
Motor vehicles	2,343	3,124
Loss on sale of tangible fixed assets	<u>818</u>	<u>177</u>
	114,254	107,526
Governance costs		
Auditors' remuneration	-	5,506
Accountancy and legal fees	7,936	2,219
Trustees Indemnity insurance	-	85
Bank interest	<u>1,174</u>	<u>1,102</u>
	<u>9,110</u>	<u>8,912</u>
Total resources expended	529,857	493,336
	<u> </u>	<u> </u>
Net income/(expenditure)	<u><u>44,428</u></u>	<u><u>(90,402)</u></u>

This page does not form part of the statutory financial statements