

ASSOCIATION FOR SPINAL INJURY RESEARCH

REHABILITATION AND REINTEGRATION

Aspire



FINANCIAL STATEMENTS

FOR THE YEAR ENDED 31 MARCH 2015

Registered Company No. 03744357

THURSDAY



L4MGLANN

LD2

17/12/2015

#79

COMPANIES HOUSE

**ASSOCIATION FOR SPINAL INJURY RESEARCH
REHABILITATION AND REINTEGRATION**

'ASPIRE'

C O N T E N T S

	Pages
Reference and administrative details	1
Chairman's report	2
Report of the trustees	3 - 19
Independent auditor's' report	20
Consolidated statement of financial activities	21
Consolidated balance sheet	22
Charitable company balance sheet	23
Consolidated cash flow statement	24
Notes to the consolidated financial statements	25 - 33

ASSOCIATION FOR SPINAL INJURY RESEARCH REHABILITATION AND REINTEGRATION

'ASPIRE'

Reference and Administrative Details

PRESIDENT	J Inverdale
VICE PRESIDENTS	A H Lambert A Jones Baroness Masham A Sparkes J R Tattersall Lady Margaret Tebbit
CHAIRMAN	D A Edwards
VICE CHAIRMAN	Dr Saroj Patel
CHIEF EXECUTIVE	B Carlin MBA
TRUSTEES & DIRECTORS	D A Edwards Dr A Gall L Hamill D Holden F L Jerreat Dr F Middleton Dr S Patel E Pattinson C Peel F Quint T Shaw
CHARITY NUMBER	1075317 – England & Wales SC037482 – Scotland
BUSINESS ADDRESS	Aspire National Training Centre Wood Lane Stanmore Middlesex HA7 4AP
REGISTERED OFFICE	Bridge House London Bridge London SE1 9QR
AUDITORS	Wilkins Kennedy LLP Chartered Accountants Bridge House London Bridge London SE1 9QR
BANKERS	CAF Cash Limited Kings Hill West Malling Kent ME19 4TA Lloyds Bank Plc 32 Oxford Street London W1A 2LD
SOLICITORS	Bircham Dyson Bell 50 Broadway London SW1H 0BL

ASSOCIATION FOR SPINAL INJURY RESEARCH REHABILITATION AND REINTEGRATION

'ASPIRE'

Chairman's Report

Although we have a five year strategic plan to encompass the expanded range of services we now deliver I am proud of our responses to the ever present and changing challenges faced by disabled people.

An illustration of our determination to respond to need arose when the Government announced plans in February to introduce Personal Independence Payment (PIP) as a replacement to the Disability living Allowance. In the Ministers foreword of the latest review of PIP he stated that "introducing a new benefit of the complexity and scale of PIP is challenging". We agree that it presented a significant challenge to disabled people. Consequently the management team at Aspire swiftly reacted to introduce a telephone Welfare Benefits Service to help guide anyone who called through the process. To date we have supported 181 spinal cord injured people to make their claim.

Last year I reported upon the progress towards our goal of establishing a research centre aimed at developing technological solutions for the assistance and rehabilitation of disabled people. This has blossomed and the partnership with UCL, through which we founded the Aspire Centre for Rehabilitation Engineering and Assistive Technology, now numbers 25 academics who in the past year alone have secured £794k of research funding and have ten ongoing research projects.

We have now launched Aspire Law LLP which was granted a licence by the Solicitor Regulation Authority in November 2014 and is the only specialist law firm in the UK to deal exclusively with spinal cord injury claims. Our lawyers are renowned experts in this field and focus all their time, energy and expertise on achieving the best possible results for the injured person and their family. It is already busy assisting clients and we are confident that the unique business focus will benefit from a significant understanding of the challenges and needs ahead of a newly injured person.

There are too many projects to mention in full but in brief we have added a further seven properties to our vital Aspire Housing programme, delivered our Patient Education Programme in five spinal cord injury centres through Aspire funded Administrators and commissioned research into the availability of social, accessible housing. We uncovered that fewer accessible homes were being built now than in 2005, whilst 24,000 wheelchair users are currently waiting for suitable social housing; at current rates, it will be 6 years before these people are housed.

In closing I would like to recount my own personal experience of an example of our work with other charities and organisations that perhaps does not steal the headlines or even need specific funding. I recently attended a launch of a community leisure centre where every possible space had been utilised to turn a previously loss making facility into profit. It was supported by a number of grants to further the inclusion of people of all forms of disability into healthy recreation and sport. Our Multi-award winning InstructAbility Programme had been introduced and embraced at the centre that now employed a graduate from the programme.

I can attest to the purpose that it had given to that person and he was eagerly seeking others to share his experience. The programme has expanded into the Midlands this year. It has now delivered seventeen courses training disabled people to become Fitness Professionals with 194 completing the qualification and of those who have graduated from the programme 55% have secured permanent employment. We feel that the grant made by Sport England to fund this programme can be shown to have produced a positive and significant outcome. The challenge ahead is to evolve a strategy to build an enduring legacy from the progress made to date.

In my personal experience the contribution and lead that Aspire gives in promoting inclusion is significant and can be measured not least in the keenness of others to learn from the example set by Aspire and in the warmth of affection felt from those whose lives have been positively affected.

We would like to warmly thank and express our gratitude to all those who have contributed to our success over the past year.

David A. Edwards
Chairman

ASSOCIATION FOR SPINAL INJURY RESEARCH REHABILITATION AND REINTEGRATION

'ASPIRE'

Report of The Trustees

The Trustees, who are also directors of the charitable company for the purposes of the Companies Act 2006, present their report and financial statements for the year ended 31 March 2015 in accordance with that Act, the Charities Act 2011 and the governing instrument.

Structure, Governance and Management

Constitution

Aspire is a registered charity, number 1075317 and is also a company limited by guarantee, registered company number 3744357. The Charity is also registered with the Office of the Scottish Charity Regulator 'OSCR' with registered charity number SC037482.

Trustees

The trustees who served during the year were as follows:

D A Edwards
Dr A Gall
L Hamill
D Holden
F L Jerreat
Dr F Middleton
Dr S Patel
E Pattinson
C Peel
F Quint
T Shaw

None of the Trustees had an interest in any contract or arrangement of a material nature during the year under review.

Methods for recruiting and appointing trustees

The Trustees select members to join the trustee board that will complement and strengthen the existing professional expertise and competencies of the board. A 'Key Skills' analysis is undertaken to identify any skills/experience/knowledge gaps on the Trustee Board before undertaking a specific recruitment process. The Trustees also welcome expressions of interest from candidates who have served a minimum of one year as a committee member supporting the work of the charity. The Trustees meet a minimum of four times a year and in addition to this attend exceptional meetings to review and develop the charity's strategy. The Trustees have several committees set up under specific terms of reference which delegate certain functions from the trustee board. Each committee is chaired by a Trustee whose responsibility it is to communicate the work and progress of the committee to the Board and to present decisions that need to be ratified by the full Board.

Policies & procedures for inducting and training trustees

During the recruitment process, a new Trustee receives a full induction to the organisation including Aspire's history, ethos, culture and vision for the future. Further to this a meeting is arranged with the Chief Executive and Directors of the Charity at the Aspire National Training Centre when a tour of the facilities is given and a more detailed explanation is provided regarding the charity's activities. Trustees are also provided with necessary information about support and advice prepared by the Charity Commission. Trustees are also invited to attend Seminars and Conferences that may be deemed appropriate and where they are not able to attend, one Trustee will provide an update and feedback to the Board from any events attended.

ASSOCIATION FOR SPINAL INJURY RESEARCH REHABILITATION AND REINTEGRATION

'ASPIRE'

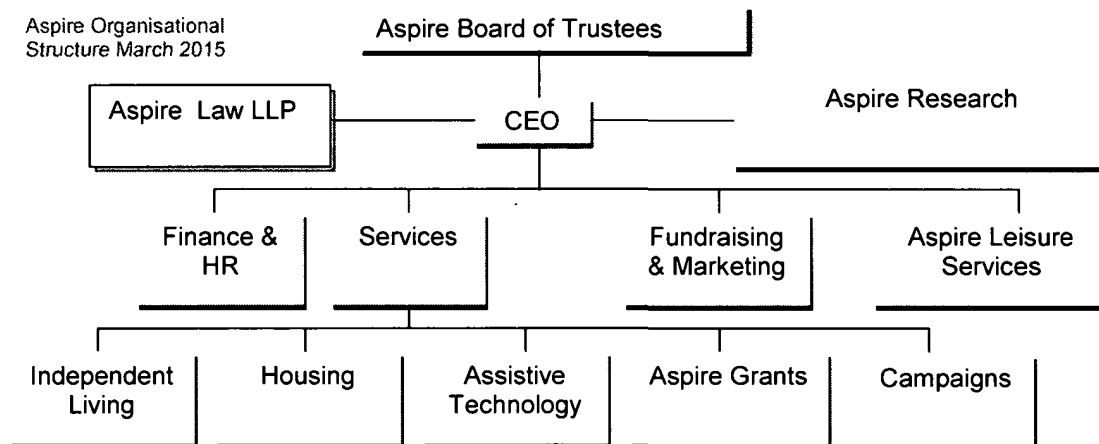
Report of The Trustees

Organisational structure and how decisions are made

The Aspire Board of Trustees is ultimately responsible for ensuring the Charity's strategic direction and the actions of its employees. This responsibility is discharged through the Chief Executive Officer. The Trustee Board meet every three months to review performance against agreed operational and financial targets. Each activity area of Aspire's work is closely monitored by Committees that include at least one Trustee who will Chair the Committee. Each Committee will invite external experts and advisors to assist in the monitoring and evaluation of these activities and to help in the longer-term development. The committees all meet prior to each and every Trustee meeting when reports are presented. Issues that require Trustee decisions are presented at the meeting where the Board will debate and agree what action is appropriate. Each decision is communicated through the Chief Executive Officer and recorded in the minutes of the meeting.

In addition to this, fortnightly meetings are held by the Vice-Chairman and the Chief Executive to monitor the Charity's performance and governance. In addition to this monthly meetings are held between the Chairman and the Chief Executive.

A 5 Year Strategic Plan has been developed to give clear guidance for longer-term decisions. The Strategic plan is communicated to all staff within Aspire and is instrumental in shaping each department's Annual Operational Plan. In developing these Operational Plans each department, in consultation with the designated Trustee, undertakes an annual review of current performance and the Strengths, Weaknesses (internal), and Opportunities and Threats (external). This process commences in December of each year with the final plans being approved by each of the Committees before being presented to the Board of Trustees, for final approval, at the March Trustee meeting. The new plans with the supporting financial budgets are then implemented at the beginning of April.



Wider network and/or relationship with affiliated organisations

To communicate and advance the work of Aspire we work with other charities and organisations to ensure the most effective means of operating and delivering our services. Aspire is a member of a consortium of spinal cord injury charities called SIT (Spinal Injuries Together). This consortium was launched in 2004 and aims to: ensure each of the charities know what they are working to achieve, give support where necessary, seek opportunities for collaboration and avoid any duplication of service activity. Aspire is also working in close partnership with the BackUp Trust to ensure our joint services can be delivered more effectively and reach more of our beneficiaries.

As part of our Assistive Technology Services Aspire is a member of a nationwide network of Karten CTEC Centres. Aspire is also a member of the European Spinal Cord Injury Federation and a member of MASCIP (Multidisciplinary Association of Spinal Cord Injury Professionals).

ASSOCIATION FOR SPINAL INJURY RESEARCH REHABILITATION AND REINTEGRATION

'ASPIRE'

Report of The Trustees

Public Benefit

The purposes and activities of Aspire include the advancement of health among those who have incurred a cord injury, academic research designed to assist such persons, the provision of recreational facilities for people in special need because of their disability and the provision of financial help and specialised housing, training, advice and other facilities for those in need of them for the same reasons. The Trustees take the view that the purposes and activities fully comply with the public benefit requirement as set out in the Charities Act 2011 and explained in the Charity Commission's guidance on Public Benefit. Aspire's services are open to all spinally injured persons regardless of age, sex, marital status, sexual orientation, ethnicity, nationality, place of residence, financial circumstances, social class, political opinions and religious belief. So Aspire's main beneficiaries, of whom there are potentially a significant number, can properly be regarded as a 'section of the public' in charity law. In addition, as part of the activities which benefit spinal injured people, Aspire also provides help and support for their families and members of the public generally. And the Trustees strongly believe that assisting spinally injured people to become independent and reintegrate into the community provides socially enrichment for the community itself and helps it to be more cohesive.

Risk Management

The Trustees have examined the major risks which the charity faces and confirm that systems have been established so that the necessary steps can be taken to manage those risks.

The systems of internal control are designed to provide reasonable, but not absolute, assurance against material misstatement or loss. They include:

- Full competitor and external threat analysis for all services.
- An annual budget with full supporting business plans approved by the trustees.
- Regular consideration by the trustees of financial results, variances from budgets and non-financial performance.
- Quarterly reporting and assessment of operational plans and objectives that have been agreed and set for the year.
- Delegation of authority and segregation of duties.
- Identification and management of risks.
- On-going investment in the development of the professional knowledge and capability of staff.
- A new Strategy Document is being developed over the year to set out our objectives up until 2020.

Objectives and Activities

Aspire was founded in 1983 to work with people with spinal cord injury to create opportunity, choice and independence through its activities in rehabilitation, reintegration and research. Its office is in Stanmore in Middlesex, alongside the London Spinal Injury Centre at the Royal National Orthopaedic Hospital Trust (RNOH).

Rehabilitation

Aspire provides practical, financial and emotional support to people with spinal cord injuries from the time of their injury through to discharge from a Spinal Injury Centre and onwards for the rest of their lives. Aspire has developed a range of services which it believes offers individuals a nurturing and rehabilitative environment that will enable them to achieve their full potential. It is Aspire's aim to deliver and build on these services throughout the UK.

ASSOCIATION FOR SPINAL INJURY RESEARCH REHABILITATION AND REINTEGRATION

'ASPIRE'

Report of The Trustees

Reintegration

Aspire's National Training Centre was extended to become Europe's first National Training Centre for disabled and non-disabled people. It was opened by The Duke of York in September 1998 and is the showpiece of the Charity's unique approach to breaking down the barriers between non-disabled and disabled people. As well as state-of-the-art rehabilitation, physiotherapy and occupational therapy suites, the Centre offers a large range of sporting, dance and training activities, all of which are run on an integrated basis – where non-disabled and disabled people can take part side-by-side. The Centre now enjoys more than 500,000 active visits each year, with 28% of membership and approximately 36% attendance by disabled customers.

Aspire provides temporary homes for those waiting to be discharged from hospital so that they may be reunited with their family and start living their life again whilst waiting for a permanent home to be made available. Last year we acquired, adapted and opened more such houses than ever before, in various locations in the UK, increasing our housing complement to 40. Our key aim over the coming years is to expand this provision to support the discharge needs of spinal injury patients.

Aspire provides a range of practical services to support people with a spinal cord injury to reintegrate into society and lead a fulfilled life.

Research

Aspire has, from its inception, been excited by the possibilities of technology. The Charity is determined that people with spinal cord injuries should be at the cutting edge of potentially beneficial new developments in this field. To that end, Aspire has invested almost £2 million in support of our Professorial Chair in Disability and Technology over the past eighteen years through University College London (UCL) Institute of Orthopaedics and Musculo-Skeletal Sciences, based at the Aspire Centre for Disability Sciences, Royal National Orthopaedic Hospital, Stanmore. A new partnership has been established to appoint three Aspire Lecturers at UCL to focus research on Rehabilitation Engineering and Assistive Technology.

Main objectives for the year

Aspire will continue to develop and expand its services on a national scale to support people with a spinal cord injury from the moment of their injury throughout their life.

In 2014/15 Aspire's key objectives were:

1. Independent Living - review Patient Education and make recommendations for development of the service; review Independent Living Advisor service and make recommendations for the development of the service; produce third Aspire Book; produce fourth Aspire Book aimed at children..
2. Benefits Advice – review DWP Benefits service and make recommendations for development of the partnership; deliver training to NHS staff on best practice in the submission of further medical evidence for benefit claims; monitor success of Welfare Benefits telephone service.
3. Aspire Housing - increase Housing stock by 15 new properties; investigate use of volunteers to decrease cost of at-house tasks; plan and implement a Housing Case Management service; improve occupancy ratio of Aspire properties.
4. Assistive Technology - roll out evaluation system across all Centres; complete upgrade of service and monitor and evaluate success of new technologies installed; continue to seek opportunities for low-cost community and outpatient events; plan and deliver conference and other training sessions.

ASSOCIATION FOR SPINAL INJURY RESEARCH REHABILITATION AND REINTEGRATION

'ASPIRE'

Report of The Trustees

5. Aspire Grants - award £150k in grants; increase awareness of service in Scotland and the South-West of England; increase returns from compensation repayments..
6. Campaigning – capitalise on NHS Commissioning project, and seek opportunities to expand this work; undertake research into accessible housing availability and take-up; implement a campaign to increase awareness of the European Accessibility Act; plan to capitalise on the next General Election and recruit a Campaigns Officer to maximise potential impact; use Loughborough University unadapted homes research to raise awareness of Aspire and the relevant issues
7. Sports Development – During the next financial year the department plans to deliver the following:
 - Deliver 4 teacher training sessions in 'how to include disabled students in PE' through the John Lyon Project.
 - Deliver 12 Sport England Funded Instructability courses.
8. Research at the Aspire Centre for Disability Science – Develop and launch MSc in Rehabilitation Engineering and Assistive Technology for 2015 academic year. Build research capability within Centre. Secure PhD funding to add to the Academic Team. Secure research funding.
9. Fundraising –
 - Achieve an unrestricted income target of £1,078,000 with a net contribution of £380,000
 - Achieve a target of £325,000 for the Aspire Channel Swim. Relaunch the Aspire Channel Swim
 - Raise £256,900 from Challenge events
 - Secure £134,500 of restricted income to cover salary costs for our Independent Living programme
 - Develop the Aspire web-site using a more powerful platform to actively communicate with and retain new supporters.
 - Continue to develop social media. Twitter to 8000 followers and Facebook to 3,000 "Likes".
10. Launch Aspire Law LLP
 - In partnership with Moore Blatch LLP Aspire will aim to launch Aspire Law LLP under an alternative business structure by September 2015. Aspire Law LLP will aim to recruit its first 10 spinal cord injury clients by the end of March 2015.

Strategies for achieving those objectives

1. Aspire will continue to develop new relationships with Housing Associations in key geographical locations, already identified, to gain new fully accessible properties to add to its existing complement of Aspire Houses. Aspire will work in partnership with the Housing Associations toward new build projects and present a case to gain access to existing housing stock. Through our Campaigning activities, Aspire will seek to gain political support towards the successful development of our Housing complement.
2. We have forged strong relationships with the Occupational Therapists at all Spinal Injury Centres where our Assistive Technology facilities have been placed. We continue to work with and report to our funders, who support our programme, to ensure they are kept informed of all developments and benefits to the spinal injury community and maintain an understanding of the latest technological developments. Our programme continues to be supported by the volunteer tutors many of whom are former patients.
3. A national service of Aspire Independent Living Advisors provides practical support and advice on living life with a spinal cord injury. They ensure newly injured patients are informed of all the services available to support them and of the practical solutions to problems that Aspire can provide.

ASSOCIATION FOR SPINAL INJURY RESEARCH REHABILITATION AND REINTEGRATION

'ASPIRE'

Report of The Trustees

4. Aspire aims to raise the profile of issues in Parliament, the media and other organisations. Respond to relevant consultations and debates. Secure quantitative and qualitative evidence of the scale of the problems and use this data where appropriate. Our Campaigns Manager works closely with Aspire Services to continue to identify issues and evolve objectives to meet changing demands.
5. We will actively pursue local arts and drama organisations to work in partnership with Aspire towards the introduction of additional integrated services in the Aspire National Training Centre.
6. Aspire will undertake constant reviews and assessments of our fundraising throughout the year to ensure we achieve the most effective and efficient fundraising results.
7. Continual monitoring by the Fundraising and Marketing committee will ensure the compliance with our annual plan and budgets.
8. Our achievements and future objectives will be assessed against our Five Year Strategy to ensure we remain committed to our strategic aims. Our Five Year Strategy document remains our guide in developing overall objectives and provides the longer-term direction for all departments within Aspire.

How objectives link to longer term strategies & objectives

Our Aspire Services Department is the spearhead of our national outreach programme and takes the Charity out into the community, nationwide. Our objectives are set to ensure; 1) we increase our awareness to the multidisciplinary spinal cord injury professionals, 2) newly injured patients, and 3) the general spinal injury community. Direct links with each and every Spinal Centre will also help Aspire communicate with more people with spinal cord injuries directly. The success of our Aspire Independent Living Advisors provides a regular face to this increased presence and essential guidance to Aspire Services on the most appropriate support and help needed.

Evidence indicates that one of the greatest issues facing Spinal Injury Centres and patients is the ability to be discharged to an accessible home at the end of the rehabilitation process and to get back on with their life. 25% of patients are discharged to Care Homes. This may be the most appropriate accommodation for a minority of patients but it is certainly not for the majority. Patients, once discharged to a Care Home, can face a residency period of one to six years. During this time they will live in a single room and be prevented from being reunited with their family in their own home and not able to enjoy the freedom and independence we all take for granted. For the 59% of patients discharged to their own homes almost all will be attempting to live in an un-adapted home where living conditions can be very limiting and extremely challenging.

Expanding our housing complement will increase the possibility of patients being discharged to a temporary home whilst action is taken to prepare a permanent home. The additional benefits are that our properties promote independence, can accommodate a live in carer and family if necessary whilst this service also ensures a specialist bed in a spinal injury centre can become available for a newly injured patient at the earliest opportunity.

How objectives link to longer term strategies & objectives (cont.)

Aspire aims to ensure our Housing Programme supports every Spinal Injury Centre throughout the UK and will continue to expand. Objective 3 will aim to address this and start to provide additional national support.

Our Assistive Technology provides patients with internet access to stay in touch with family and friends worldwide, keep up to date with the outside world and the independence to bank online. This technology embraces our ethos and helps to maintain independence.

Aspire exists to support people from injury to independence. Our campaigning objectives allow us to reach and have a positive influence on those beyond our immediate service users, ensuring that Aspire has an impact on all 40,000 people in the UK with a spinal cord injury.

ASSOCIATION FOR SPINAL INJURY RESEARCH REHABILITATION AND REINTEGRATION

'ASPIRE'

Report of The Trustees

Achievements and Performance

Objective 1

Independent Living – review Patient Education and make recommendations for development of the service; review Independent Living Advisor service and make recommendations for the development of the service; produce third Aspire Book; produce fourth Aspire Book aimed at children.

Outcome

Patient Education continues to run with the support of Aspire in five Spinal Injury Centres. Feedback from staff and patients has been overwhelmingly positive. As a result of feedback, more peer support has been introduced into the sessions with the use of volunteers, whilst Stanmore has started operating the sessions on two days each week.

The review of the Independent Living Advisor service has been delayed, largely due to the fact that our Advisors at three Centres were on long-term sick leave – we suspected that this had the potential to skew any findings. The review will now take place next financial year. Despite the absences, and the fact that Spinal Injuries Scotland support the Glasgow Spinal Centre, our Advisor team personally met with around half of all those who were injured in the UK last year. Our monitoring shows that the Service is well received, with the vast majority of patients reporting that talking to an Advisor was useful and resulted in an increase in their independence.

Work on the two new Aspire Books was postponed until the new financial year owing to restricted income having not been received.

Objective 2

Welfare Benefits – review DWP Benefits service and make recommendations for development of the partnership; deliver training to NHS staff on best practice in the submission of further medical evidence for benefit claims; monitor success of Welfare Benefits telephone service.

Outcome

The DWP Visiting Officers carried out basic monitoring of their work in Spinal Centres, revealing that there was strong demand for their service across a range of benefit types. Training for all the visiting officers, jointly organised and delivered by Aspire and the DWP ensured improved continuity and standards of service.

Aspire provided training on the submission of Further Medical Evidence to consultants and other NHS staff at five Spinal Injury Centres. The feedback for these sessions was uniformly positive and we are confident that those who attended are now supplying the correct evidence when needed for Personal Independence Payment claims.

The Welfare Benefits telephone success supported 181 people during the year, helping individuals claim £85,000 worth of benefits they were entitled to but hadn't been claiming. Demand for the service was such that a new, full time post was introduced to the team.

Objective 3

Housing – increase Housing stock by 15 new properties; investigate use of volunteers to decrease cost of at-house tasks; plan and implement a Housing Case Management service; improve occupancy ratio of Aspire properties.

Outcome

Unfortunately, we missed our target of 15 houses by quite some way, finally launching just 7 properties. Happily, this did include our first house in Devon, and a second house in Bristol, ensuring our aim to provide properties in the South West was achieved. Much groundwork was also put in place that should see fruitful partnerships with new Housing Associations in the future.

A small number of volunteers have been recruited to pilot the ease with which they can be used for key tasks; at the end of the year, we were still waiting for those properties linked to the volunteers to need their input.

ASSOCIATION FOR SPINAL INJURY RESEARCH REHABILITATION AND REINTEGRATION

'ASPIRE'

Report of The Trustees

Achievements and Performance (cont.)

Aspire's new Housing Case Manager joined the team in December 2014, quickly taking on a full caseload as they helped individuals being forced to live in care homes and unadapted properties or who just needed specialist housing advice, guidance and support. This new role has been widely welcomed by the staff at the Spinal Injury Centres and colleagues at other charities, with referrals quickly coming to us from both sources.

Housing occupancy improved steadily throughout the year, going from a low of 68% in April 2014 to an eventual high of 87% in March 2015.

Objective 4

Assistive Technology – roll out evaluation system across all Centres; complete upgrade of service and monitor and evaluate success of new technologies installed; continue to seek opportunities for low-cost community and outpatient events; plan and deliver conference and other training sessions.

Outcome

An evaluation system was piloted at Salisbury Spinal Centre with limited success – the poor returns prompted a total rethink and, at the end of the year a new system was ready for review by all volunteers. We will be rolling this out across all Centre next year.

The upgrade of the Service was completed, with use of iPad and iPhone switch access and the Eye-Gaze technologies particularly well received. We were also able to pilot a new overbed mounting system at one Centre; the results of this pilot were such that four further Centres were upgraded with this new system.

Outpatient and community events were undertaken at Stoke Mandeville, Belfast and with the Spinal User Group in Cornwall. Whilst well received, the reach of these lone events is not quite to the level that we had hoped.

Another successful conference was delivered in 2014, with a change of format giving new NHS Occupational Therapists and Aspire volunteers more time to trial equipment. Feedback was uniformly positive. Two additional Aspire volunteer training sessions were run, including one that made use of video conferencing access. Participants reported feeling more confident in their work with patients as a result of these sessions.

Objective 5

Grants – award £150k in grants; increase awareness of service in Scotland and the South-West of England; increase returns from compensation repayments.

Outcome

Applications from Scotland and the South-West continued to be low but the lack of income prevented us from actively marketing the Service.

Income from compensation repayments totalled a little under £5,000 for the year (4 separate refunds). This is an improvement on previous years, but still demonstrates scope for improvement. Aspire has worked with the Motor Accident Solicitors Society and Moore Blatch to tighten up our procedures when working with an applicant who has a live compensation claim and we expect this to result in improved returns in the future.

ASSOCIATION FOR SPINAL INJURY RESEARCH REHABILITATION AND REINTEGRATION

'ASPIRE'

Report of The Trustees

Objective 6

Campaigns – capitalise on NHS Commissioning project, and seek opportunities to expand this work; undertake research into accessible housing availability and take-up; implement a campaign to increase awareness of the European Accessibility Act; plan to capitalise on the next General Election and recruit a Campaigns Officer to maximise potential impact; use Loughborough University unadapted homes research to raise awareness of Aspire and the relevant issues.

Outcome

Following the work in Cornwall and Manchester, Aspire and Back Up were invited to work in partnership with the Vale of York CCG; our research and subsequent recommendations were due to be submitted early in the new year.

Research was undertaken into the availability of social, accessible housing. We uncovered that fewer accessible homes were being built now than in 2005, whilst 24,000 wheelchair users are currently waiting for suitable social housing; at current rates, it will be 6 years before these people are housed.

Contact was made with European Parliament candidates to raise this issue and we received a number of favourable responses, though there has been limited follow up since. It was still a useful exercise in that it made use of staff and Aspire communications to publicise the work we were doing, and it was Aspire's first foray into European work.

A Campaigns Assistant was recruited and due to start in April 2015, with a plan in place to follow up on the outcomes of the General Election. A lack of funds limited our ability to put the Assistant post in place in the build up to the Election and fully capitalise on the candidates' plans.

The research from Loughborough University was delayed in coming to us and, as a consequence, was not released during the year.

Objective 7

Sports Development – During the next financial year the department plans to deliver the following:

- Deliver 4 teacher training sessions in 'how to include disabled students in PE' through the John Lyon Project.
- Deliver 12 Sport England Funded Instructability courses.

Outcome

- These sessions were delivered and marked the end of the John Lyon Project. (do you want to add something about there not being a sports development team anymore?)
- Course delivery in 2014: Midlands & East 5 out of 6 delivered, London & South East: 6 out of 6 courses delivered.

Objective 8

Research at the Aspire Centre for Disability Science – Develop and launch MSc in Rehabilitation Engineering and Assistive Technology for 2015 academic year. Build research capability within Centre. Secure PhD funding to add to the Academic Team. Secure research funding.

Outcome

A new MSc in Rehabilitation Engineering and Assistive Technologies was designed and submitted for approval by UCL. The proposal was subject to internal and external scrutiny before approval. The programme is set to launch in October 2015 (subject to having enough student applications).

The group has secured funding for six new PhD students and one Post-Doctorate Researcher. Two additional Post Doctorate Researcher/Lecturers have joined the Team from other UCL Departments.

Funding in excess of £794k has been secured.

Ten projects are now active since Aspire CREATE was launched.

ASSOCIATION FOR SPINAL INJURY RESEARCH REHABILITATION AND REINTEGRATION

'ASPIRE'

Report of The Trustees

Objective 9

Fundraising;

- Achieve an unrestricted income target of £1,078,000 with a net contribution of £380,000
- Achieve a target of £325,000 for the Aspire Channel Swim. Relaunch the Aspire Channel Swim
- Raise £256,900 from Challenge events
- Secure £134,500 of restricted income to cover salary costs for our Independent Living programme
- Develop the Aspire web-site using a more powerful platform to actively communicate with and retain new supporters.
- Continue to develop social media. Twitter to 8000 followers and Facebook to 3,000 "Likes".

Outcome

- Achieved a total income of £1,258,332 of unrestricted funds. Net contribution of £596,960
- Aspire Channel swim relaunched and target exceeded by over £98,000. Total income 2014/15 is £423,145.
- Challenge events raised £254,178
- Failed to secure adequate restricted funding for Independent Living. Only £50,000 raised in 2014/15. (£90,000 already confirmed for 2015/16)
- Aspire web-site developed and relaunched. Lots more capability and we will be doing our best to ensure it is used more effectively.
- 31/3/2015 Twitter followers 7,359. Facebook "likes" 2418.

Objective 10

Launch Aspire Law LLP

- In partnership with Moore Blatch LLP Aspire will aim to launch Aspire Law LLP under an alternative business structure by September 2015. Aspire Law LLP will aim to recruit its first 10 spinal cord injury clients by the end of March 2015.

Outcome

- Aspire Law LLP was granted its Licence by the Solicitor Regulation Authority in November 2014.
- Aspire Law LLP secured 10 spinal cord injury clients by the end of March 2015.

ASSOCIATION FOR SPINAL INJURY RESEARCH REHABILITATION AND REINTEGRATION

'ASPIRE'

Report of The Trustees

Financial Review

Figure 1 Aspire Fundraising Income 2011 ~ 2015

Total Fundraising income grew considerably during the year with the unsolicited donations and a significant legacy. Our Fundraising events continue to perform well.

Figure 2 Aspire Charitable Income 20011 ~ 2015

Our Charitable Income continues to grow in line with the demand for our Housing Programme and Leisure Services with the exception of the previous two years when we received over £1.4m through the Harebell Appeal in support of the capital cost of adapting, furnishing and equipping Aspire Housing. The Aspire Leisure Services received a £854k grant, in 2012/13, from Sport England, in support of our InstructAbility Programme to train disabled people to become fitness professionals.

ASSOCIATION FOR SPINAL INJURY RESEARCH REHABILITATION AND REINTEGRATION

'ASPIRE'

Report of The Trustees

Expenditure

Figure 3 Aspire Total Cost of Fundraising 2011 ~ 2015

Due to the increasing demand for our Events we invested in building greater capacity within the Fundraising Department during the year.

Figure 4 Fundraising as a Percentage of Total Annual Expenditure 2007 ~ 2015

We are delighted to see that as a percentage of our total expenditure this is now less than any year from 2007 at only 20%.

ASSOCIATION FOR SPINAL INJURY RESEARCH REHABILITATION AND REINTEGRATION

'ASPIRE'

Report of The Trustees

Expenditure (continued)

Figure 5 Aspire Charitable Expenditure 2011 ~ 2015

The Aspire Leisure Services expenditure increased as a direct result of the Sport England funded InstructAbility Programme that is now in its second year of a three year project.

Our research expenditure has increased as we have invested in the appointment of the three Aspire Lecturers. We also continue to invest in social research into issues affecting spinal cord injured people. Some of this work will be published in 2014/15.

Aspire Housing expenditure remains consistent with our planned expenditure and apart from our department operating cost and the cost of property rental this also includes the cost of adapting, furnishing and equipping our new properties.

The Aspire Grants has successfully supported people with a spinal cord injury throughout the UK, for more than twenty years. Grants are given to purchase specialist equipment that will promote and improve a spinally injured person's independence. We are striving to increase the volume and value of our grants but this has been restricted this year due to lower level of funds being available.

Independent Living is the expenditure that supports our team of Aspire Independent Living Advisors who support patients in the spinal injury centres throughout the UK. This team now meets the needs of 9 spinal injury centres.

Assistive Technology costs are in support of the management of our specialist technology and support of our volunteer workforce throughout the UK.

Campaigning expenditure covers the cost of our Policy and Research Officer. Please see our report earlier for the activities in this area of our work. We were able to reduce our cost again this year as much of our Officer's work was involved in research.

ASSOCIATION FOR SPINAL INJURY RESEARCH REHABILITATION AND REINTEGRATION

'ASPIRE'

Report of The Trustees

Investment policy and returns

Aspire operates an investment policy to achieve the maximum possible return at the lowest level of risk. We aim to ensure that cash deposits grow in value, in line with the rate of inflation, whilst providing a modest return on the original capital invested. To achieve this, Aspire has chosen to invest with the Ashcourt Rowan Fixed Interest Bonds (guaranteed return of 7.8% on the original capital value), CCLA Property Fund (6.9%), CCLA Investment Fund (3.7%) and IM CAF Fixed Interest Fund (3.16%) whilst also placing cash deposits with a new Virgin Charity Deposit Account (1%).

Reserves Policy

Free reserves available for use or designation by Aspire are the unrestricted funds (note 12) less the net book value of tangible fixed assets (note 6). The Trustees have reviewed the general reserves policy for the Charity and have considered the financial requirements needed to support the work of the Charity and to protect against potential risks.

	2014/15	2013/14	2012/13	2011/12
	£,000	£,000	£,000	£,000
Total Unrestricted Funds	570	475	494	518
Less: Tangible Fixed Assets	322	182	145	149
Free reserves before designations	248	293	348	369

The Trustees have established a policy whereby the unrestricted funds (not committed or invested in tangible fixed assets) held by the Charity is sufficient to support the planned activities and approximate budgeted expenditure of £2.5m throughout 2014/15. This, in the opinion of the Trustees, will provide sufficient protection against any potential drop in funding income to ensure Aspire Services remain unaffected. The Trustees aim to rebuild the reserves back to approximately £300k in the next two to three years.

Volunteers

The Charity is extremely grateful for the altruistic efforts of its volunteers who are involved in our administration, governance through membership of a Sub-Committee, support and fundraising activities. The dedication shown by our volunteers has been unfaltering and complimented with boundless energy, enthusiasm and commitment. We are indebted to them for their support.

Employees

All Employees are provided with monthly newsletters that update them on the most recent activities of the Charity and the achievements throughout the year. We also invite all employees to attend full staff meetings that provide them with an opportunity to openly express any concerns and explore ideas they may have directly with our senior management team. Staff are also encouraged to stay in touch with progress through social media – Aspire Facebook and Twitter and to take part in events throughout the UK.

The Charity has implemented a number of detailed policies in relation to all aspects of personnel matters as an awarded Investor in People organisation. The Charity was also awarded Best Companies Two Star Accreditation and is proud to be in the Sunday Times Top 100 Best Not-for-Profit Organisations to Work For 2015.

ASSOCIATION FOR SPINAL INJURY RESEARCH REHABILITATION AND REINTEGRATION

'ASPIRE'

Report of The Trustees

Trusts and Commercial Supporters

Aspire would like to thank the following trusts and foundations for their support of our work during the last year:

The Taurus Foundation

The Ian Karten Charitable Trust

The Jordan Charitable Foundation

The Monday Charitable Foundation

The P F Charitable Trust

Leathersellers' Company Charitable Fund

The Monument Trust

The Garfield Weston Foundation

The Childwick Trust

The City Bridge Trust

The James Tudor Foundation

HM Revenue & Customs

The Wheelwrights Charity Trust

Sport England

Aspire would also like to thank the following people and organisations for their support:

Aspire Law

Bloom & Wild

The Edge Group

Hythe Marine Services

Irwin Mitchell LLP

Wellspect HealthCare

White Druce & Brown

Zoggs International Ltd

Zurich Community Trust

John Inverdale

Rob Nothman

Mr & Mrs Alan Bloom

Andrew Murray Golf

Porters Park Golf Club

In Depth Tourism Marketing

Mountview Estates P.L.C.

ASSOCIATION FOR SPINAL INJURY RESEARCH REHABILITATION AND REINTEGRATION

'ASPIRE'

Report of The Trustees

Plans for the Future 2015/16

1. Review Independent Living Advisor service and make recommendations for the development of the service; produce third Aspire Book; produce fourth Aspire Book aimed at children; explore need for engagement with patients post discharge.
2. Introduce DWP Benefits service to Middlesbrough Spinal Injury Centre
3. Increase Housing stock by 15 new properties; improve monitoring of Housing Case Management to include long-term outcomes; reduce tenant length of stay.
4. Ensure new evaluation system is operating and analyse findings; implement a formal training and competencies framework for volunteers; develop a 'fast response' kit for patients recently injured and based in general hospitals.
5. Award £150,000 in grants; increase awareness of the Service in Scotland, Wales and the South-West of England.
6. Use Loughborough University unadapted homes research to raise awareness of Aspire and the relevant issues; produce regular updates for the new campaigns blog; use last year's Housing Waiting Lists research to target underperforming Local Authorities.
7. Deliver 18 Sport England funded InstructAbility Courses throughout England.
8. Secure funding for new PhD students. Appoint a new Clinical Academic to sit between CREATE and London Spinal Cord Injury Research Centre and contribute to the delivery of clinical research. Continue submitting grants to increase the research income. Increase the number of active projects. Convert initial collaborations with colleagues at RNOH into grant submissions. Initiate key strategic collaborations. Maintain publication rate, increase number of publications as first/last author and participate in EU Horizon 2020 consortia.
9. Fundraising –
 - Achieve an unrestricted income target of £1,156,702, with a net contribution of £438,516
 - Maintain the growth in the Aspire Channel Swim, achieving a total income of £452,500 with a net contribution of £269,752.
 - Develop one more sustainable community based event for Aspire to bring in an income of at least £10,000.
 - Increase the number of regular givers from 66 to 100 during the financial year.
 - Secure £172,198 in restricted income to fund the expansion of the Independent Living programme. Ensure Aspire appears on first page of Google searches for "spinal injury" related searches using Google Adwords and SEO.
 - Twitter followers to 10,000 by 31 March 2016
10. Aspire Law LLP to represent at least 20 clients within its first year of operation by the beginning of November 2015 and to secure a regular Legal Clinic partnership with a spinal cord injury centre in England.

ASSOCIATION FOR SPINAL INJURY RESEARCH REHABILITATION AND REINTEGRATION

'ASPIRE'

Report of The Trustees

Statement of Trustees' Responsibilities

The trustees are responsible for preparing the Trustees' Report and the financial statements, in accordance with applicable law and United Kingdom Accounting Standards (United Kingdom Generally Accepted Accounting Practice).

Company law requires the trustees to prepare financial statements for each financial year, which give a true and fair view of the state of affairs of the charitable company and of the incoming resources and application of resources, including the income and expenditure of the charitable company for the year. In preparing these financial statements, the trustees are required to:

- select suitable accounting policies and then apply them consistently;
- observe the methods and principles in the Charities SORP;
- make judgements and estimates that are reasonable and prudent;
- state whether applicable UK Accounting Standards have been followed, subject to any material departures disclosed and explained in the financial statements;
- prepare the financial statements on the going concern basis unless it is inappropriate to presume that the charitable company will continue in operation.

The trustees are responsible for keeping adequate accounting records that disclose, with reasonable accuracy at any time, the financial position of the charitable company and enable them to ensure that the financial statements comply with the Companies Act 2006. They are also responsible for safeguarding the assets of the charitable company and hence for taking reasonable steps for the prevention and detection of fraud and other irregularities.

In so far as the trustees are aware:

- there is no relevant audit information of which the charitable company's auditor is unaware; and
- the trustees have taken all steps that they ought to have taken to make themselves aware of any relevant audit information and to establish that the auditor is aware of that information.

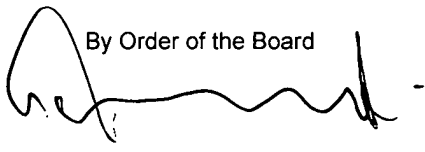
The trustees are responsible for the maintenance and integrity of the corporate and financial information included on the charitable company's website. Legislation in the United Kingdom governing the preparation and dissemination of financial statements may differ from legislation in other jurisdictions.

Auditors

A resolution for the re-appointment of Wilkins Kennedy LLP as auditors to the charitable company will be submitted to the Annual General Meeting.

This report has been prepared in accordance with the Statement of Recommended Practice: 'Accounting and Reporting by Charities' and in accordance with the special provisions of Part 15 of the Companies Act 2006 relating to smaller entities.

By Order of the Board



David A Edwards

Date: 03 December 2015

ASSOCIATION FOR SPINAL INJURY RESEARCH REHABILITATION AND REINTEGRATION

'ASPIRE'

Independent Auditors' Report To The Members

We have audited the financial statements of the Association for Spinal Injury Research Rehabilitation and Reintegration for the year ended 31 March 2015 which comprise the Consolidated Statement of Financial Activities, the Consolidated and Charity Balance Sheet, Consolidated Cash Flow Statement and the related notes. The financial reporting framework that has been applied in their preparation is applicable law and Financial Reporting Standard for Smaller Entities (effective April 2008) (United Kingdom Generally Accepted Accounting Practice applicable to Smaller Entities).

This report is made solely to the charitable company's members, as a body, in accordance with Chapter 3 of Part 16 of the Companies Act 2006. Our audit work has been undertaken so that we might state to the charitable company's members those matters we are required to state to them in an auditor's report and for no other purpose. To the fullest extent permitted by law, we do not accept or assume responsibility to anyone other than the charitable company and its members as a body, for our audit work, for this report, or for the opinions we have formed.

Respective responsibilities of trustees and auditor

As explained more fully in the Statement of Trustees' Responsibilities, the trustees (who are also the directors of the charitable company for the purposes of company law) are responsible for the preparation of the financial statements and for being satisfied that they give a true and fair view.

Our responsibility is to audit and express an opinion on the financial statements in accordance with applicable law and International Standards on Auditing (UK and Ireland). Those standards require us to comply with the Auditing Practices Board's (APB's) Ethical Standards for Auditors.

Scope of the audit of the financial statements

An audit involves obtaining evidence about the amounts and disclosures in the financial statements sufficient to give reasonable assurance that the financial statements are free from material misstatement, whether caused by fraud or error. This includes an assessment of: whether the accounting policies are appropriate to the charitable company's circumstances and have been consistently applied and adequately disclosed; the reasonableness of significant accounting estimates made by the trustees; and the overall presentation of the financial statements. In addition, we read all the financial and non-financial information in the Trustees' Annual Report to identify material inconsistencies with the audited financial statements and to identify any information that is apparently materially incorrect based on, or materially inconsistent with, the knowledge acquired by us in the course of performing the audit. If we become aware of any apparent material misstatements or inconsistencies we consider the implications for our report.

Opinion on financial statements

In our opinion the financial statements:

- give a true and fair view of the state of the Group and of the charitable company's affairs as at 31 March 2015, and of the incoming resources and application of resources, including the income and expenditure, for the year then ended;
- have been properly prepared in accordance with United Kingdom Generally Accepted Accounting Practice applicable to smaller entities; and
- have been prepared in accordance with the requirements of the Companies Act 2006.

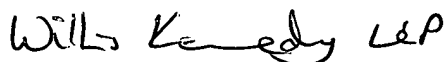
Opinion on other matters prescribed by the Companies Act 2006

In our opinion the information given in the Trustees' Annual Report, for the financial year for which the financial statements are prepared, is consistent with the financial statements.

Matters on which we are required to report by exception

We have nothing to report in respect of the following matters where the Companies Act 2006 requires us to report to you if, in our opinion:

- adequate accounting records have not been kept or returns adequate for our audit have not been received from branches not visited by us; or
- the financial statements are not in agreement with the accounting records and returns; or
- certain disclosures of trustees' remuneration specified by law are not made; or
- we have not received all the information and explanations we require for our audit; or
- the trustees were not entitled to prepare the financial statements in accordance with the small companies regime and take advantage of the small companies exemption in preparing the Trustees' Annual Report.



John Howard (Senior Statutory Auditor)

For and on behalf of Wilkins Kennedy LLP, Statutory Auditor

Bridge House
London Bridge
London SE1 9QR

Date: 03 December 2015

ASSOCIATION FOR SPINAL INJURY RESEARCH REHABILITATION AND REINTEGRATION

'ASPIRE'

Consolidated Statement of Financial Activities

For The Year Ended 31 March 2015

	Notes	Unrestricted Funds £'000	Restricted Funds £'000	Total 2015 £'000	Total 2014 £'000
Incoming resources					
Incoming resources from generated funds					
Voluntary income	2	395	104	499	342
Activities for generating funds:					
Income of trading subsidiary	3	941	-	941	733
Investment income		72	-	72	99
Incoming resources from charitable activities					
Aspire Leisure Services		1,183	14	1,197	1,237
Aspire Housing		248	334	582	385
Total incoming resources		2,839	452	3,291	2,796
Resources expended					
Cost of generating funds					
Cost of generating voluntary income		196	-	196	219
Costs of trading subsidiary	3	509	-	509	358
Charitable expenditure					
Aspire Leisure Services		1,401	133	1,534	1,526
Research		1	156	157	106
Aspire Housing		309	302	611	549
Aspire Grants		170	-	170	188
Promoting independent living		121	80	201	187
Assistive technology		96	24	120	105
Campaigning		27	-	27	25
Governance costs		21	-	21	13
Total resources expended	4	2,851	695	3,546	3,276
Net incoming (outgoing) resources before transfers		(12)	(243)	(255)	(480)
Transfer between funds		-	-	-	-
Net incoming (outgoing) resources		(12)	(243)	(255)	(480)
Gain on investments	7	108	-	108	78
Net movement in funds		96	(243)	(147)	(402)
Fund balances brought forward		475	2,463	2,938	3,340
Fund balances carried forward at 31 March 2015		571	2,220	2,791	2,938

The notes on pages 25 to 33 form part of these financial statements.

ASSOCIATION FOR SPINAL INJURY RESEARCH REHABILITATION AND REINTEGRATION

'ASPIRE'

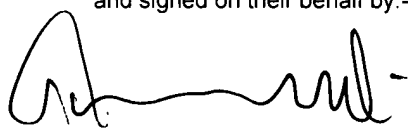
Consolidated Balance Sheet

As at 31 March 2015

	Notes	<u>2015</u> £'000	£'000	<u>2014</u> £'000	£'000
Fixed assets					
Tangible fixed assets	6		322		182
Investments	7		1,618		1,632
			<u>1,940</u>		<u>1,814</u>
Current assets					
Stocks	8	1		2	
Debtors	9	612		1,057	
Cash at bank and in hand		916		749	
		<u>1,529</u>		<u>1,808</u>	
Creditors: Amounts falling due					
Within one year	10	(678)		(684)	
Net current liabilities			<u>851</u>		<u>1,124</u>
Net assets			<u><u>2,791</u></u>		<u><u>2,938</u></u>
Funds					
Restricted funds	11		2,220		2,463
Unrestricted funds	12		571		475
			<u><u>2,791</u></u>		<u><u>2,938</u></u>

The financial statements have been prepared in accordance with the special provisions of Part 15 of the Companies Act 2006 relating to small entities and with the Financial Reporting Standard for Smaller Entities (April 2008).

The financial statements were approved by the Board on 03 December 2015 and signed on their behalf by:-



David A Edwards

The notes on pages 25 to 33 form part of these financial statements.

ASSOCIATION FOR SPINAL INJURY RESEARCH REHABILITATION AND REINTEGRATION

'ASPIRE'

Charitable Company Balance Sheet

As at 31 March 2015

	Notes	2015 £'000	2014 £'000	2014 £'000
Fixed assets				
Tangible fixed assets	6		322	182
Investments	7		1,618	1,633
			<u>1,940</u>	<u>1,815</u>
Current assets				
Debtors	9	458	869	
Cash at bank and in hand		920	767	
		<u>1,378</u>	<u>1,636</u>	
Creditors: Amounts falling due within one year	10	(527)	(513)	
Net current liabilities			<u>851</u>	<u>1,123</u>
Net assets			<u><u>2,791</u></u>	<u><u>2,938</u></u>
Funds				
Restricted funds	11		2,220	2,463
Unrestricted funds	12		571	475
			<u><u>2,791</u></u>	<u><u>2,938</u></u>

The financial statements have been prepared in accordance with the special provisions of Part 15 of the Companies Act 2006 relating to small entities and with the Financial Reporting Standard for Smaller Entities (April 2008).

The financial statements were approved by the Board on 03 December 2015 and signed on their behalf by:-



David A Edwards

The notes on pages 25 to 33 form part of these financial statements.

ASSOCIATION FOR SPINAL INJURY RESEARCH REHABILITATION AND REINTEGRATION

'ASPIRE'

Consolidated Cash Flow Statement

For the Year Ended 31 March 2015

	<u>2015</u>		<u>2014</u>	
	£'000	£'000	£'000	£'000
Reconciliation of changes in resources to net cash flow from operating activities				
Changes in resources		(255)		(480)
Depreciation		60		49
Decrease in stocks		(1)		(1)
Decrease/(increase) in debtors		446		(62)
Increase in creditors		(5)		-
Net cash flow from operating activities		<u>245</u>		<u>(494)</u>
Cash flow statement				
Net cash flow from operating activities		245		(494)
Capital expenditure and financial investment				
Payments to acquire investments	(850)		(5)	
Payments to acquire tangible fixed assets	(200)		(85)	
Proceeds from sale of investments	973		1,105	
		<u>(77)</u>		<u>1,015</u>
Financing		-		-
Increase /(decrease) in cash		<u>168</u>		<u>521</u>
Reconciliation of changes in cash				
Balance at 1 April 2014		748		228
Increase/(decrease) in cash		168		521
Balance at 31 March 2015		<u>916</u>		<u>749</u>

The notes on pages 25 to 33 form part of these financial statements.

ASSOCIATION FOR SPINAL INJURY RESEARCH REHABILITATION AND REINTEGRATION

'ASPIRE'

Notes To The Financial Statements

For the Year Ended 31 March 2015

1. ACCOUNTING POLICIES

a) Basis of accounting

The financial statements are prepared under the historical cost convention and in accordance with the Financial Reporting Standard for Smaller Entities (effective April 2008), applicable UK Accounting Standards and the Statement of Recommended Practice, "Accounting and Reporting by Charities" (SORP 2005), issued in March 2005.

b) Consolidation

These financial statements consolidate the results of the Charity and its wholly owned subsidiary, ASPIRE Fundraising Limited, on a line by line basis. A separate statement of financial activities for the charitable company has not been presented as permitted by paragraph 397 of the SORP.

c) Incoming resources

All incoming resources are included in the Statement of Financial Activities when the charity is entitled to the income and the amount can be quantified with reasonable accuracy. The following specific policies are applied to particular categories of income:

- Voluntary income including core grants, sponsorship, donations and gifts is included in full in the Statement of Financial Activities when receivable. Grants, where entitlement is not conditional on the delivery of a specific performance by the charity, are recognised when the charity becomes unconditionally entitled to the grant.
- Incoming resources from charitable activities comprises income from carrying out the charity's activities, including the operation of the National Training Centre and the supported housing.
- Investment income is included when receivable.

d) Resources expended

Expenditure is accounted for on an accruals basis. The irrecoverable element of VAT is included with the item of expense to which it relates.

- Costs of generating funds are those costs incurred in attracting voluntary income.
- Charitable expenditure comprises those costs incurred by the charity in the delivery of its activities and services for its beneficiaries. It includes both costs allocated directly to such activities and those costs of an indirect nature necessary to support them.
- Governance costs include those incurred in the governance of the charity and are primarily associated with constitutional and statutory requirements.

e) Tangible fixed assets

Depreciation on all tangible fixed assets is calculated to write off their cost over their estimated useful lives at the following annual rates:-

Leasehold improvements	20 years
Office fixtures & fittings	25% per annum on cost
Computer equipment	33% per annum on cost

f) Fixed asset investments

Fixed asset investments are included at market value at the balance sheet date. Any gain or loss on revaluation is taken to the SOFA.

ASSOCIATION FOR SPINAL INJURY RESEARCH REHABILITATION AND REINTEGRATION

'ASPIRE'

Notes To The Financial Statements

1. ACCOUNTING POLICIES (Continued)

g) Stock

Stock is stated at the lower of cost and net realisable value.

h) Funds accounting

Restricted funds – these are funds that can only be used for specific restricted purposes within the objects of the charity. Restrictions arise when specified by the donor or when funds are raised for particular restricted purposes.

Designated funds – these are funds set aside by the trustees out of unrestricted general funds for specific future purposes or projects.

Unrestricted general funds – these are funds which can be used in accordance with the charitable objects at the discretion of the trustees.

i) Legal status

Aspire is a company limited by guarantee and has no share capital. The liability of each member in the event of a winding up is limited to £1.

j) Taxation

The charitable company is considered to pass the tests set out in Paragraph 1 Schedule 6 Finance Act 2010 and therefore it meets the definition of a charitable company for UK corporation tax purposes. Accordingly, the charity is potentially exempt from taxation in respect of income or capital gains received within categories covered by Chapter 3 Part II Corporation Tax Act 2010 or Section 256 of the Taxation of Chargeable Gains Act 1992, to the extent that such income or gains are applied exclusively to charitable purposes.

2. VOLUNTARY INCOME

	2015 £'000	2014 £'000
Donations	47	127
Grants received	452	215
	499	342

3. SUBSIDIARY UNDERTAKING – ASPIRE FUNDRAISING LIMITED

The profit of the subsidiary undertaking, Aspire Fundraising Limited, is gifted to the charity so that there is no liability to Corporation Tax for that entity. Aspire Fundraising Limited produces audited accounts annually to 31 March and a summary of the company's transactions and financial position is set out below:

Turnover	941	733
Cost of sales	(156)	(107)
	785	626
Operating costs	(353)	(251)
	432	375
Operating profit	-	-
Interest received	-	-
Net income of trading subsidiary	432	375
Payments made under gift aid	(432)	(375)
Retained in subsidiary	-	-

ASSOCIATION FOR SPINAL INJURY RESEARCH REHABILITATION AND REINTEGRATION

'ASPIRE'

Notes To The Financial Statements

4. RESOURCES EXPENDED	<u>Staff costs</u> £'000	<u>Direct costs</u> £'000	<u>Support</u> £'000	<u>Total</u> £'000
Cost of generating funds:				
Cost of generating voluntary income	145	47	4	196
Costs of trading subsidiary	151	358	-	509
Charitable expenditure:				
Aspire Leisure Services	858	452	224	1,534
Research	147	1	9	157
Aspire Housing	121	475	15	611
Aspire Grants	23	141	6	170
Promoting independent living	160	11	30	201
Assistive technology	65	38	17	120
Campaigning	24	-	3	27
Governance costs	-	-	21	21
	<u>1,694</u>	<u>1,523</u>	<u>329</u>	<u>3,546</u>

All costs are allocated between the expenditure categories noted above on a basis designed to reflect the use of the resource. Costs relating to a particular activity are allocated directly, others are apportioned on an appropriate basis, for example, time spent, per capita or floor area.

Governance costs include:

	<u>2015</u> £'000	<u>2014</u> £'000
Auditors' remuneration:		
- For audit	6	5
- For other services	8	8

5. STAFF COSTS

Wages and salaries	1,547	1,385
Social security costs	107	98
Pension contributions	36	24
Recruitment	4	9
	<u>1,694</u>	<u>1,516</u>

None of the Trustees received any remuneration or benefits during the year (2014: None). Expenses totalling £482 were reimbursed to trustees during the year (2014: £190).

The emoluments of one member of staff are within the range £80,001 to £90,000, with a pension contribution of £7,165.

The average number of employees during the year was as follows:

	<u>Group</u>		<u>Parent</u>	
	<u>2015</u>	<u>2014</u>	<u>2015</u>	<u>2014</u>
Aspire Leisure Centre	67	68	67	68
Other	22	15	22	15
Trading subsidiary	10	9	-	-
	<u>99</u>	<u>92</u>	<u>89</u>	<u>83</u>

ASSOCIATION FOR SPINAL INJURY RESEARCH REHABILITATION AND REINTEGRATION

'ASPIRE'

Notes To The Financial Statements

6. TANGIBLE FIXED ASSETS

Group and Charity	Leasehold Improvements £'000	Fixtures, Fittings and Computers £'000	Total £'000
Cost			
At 1 April 2014	322	310	632
Additions	145	55	200
At 31 March 2015	467	365	832
Depreciation			
At 1 April 2014	165	285	450
Charge for the year	26	34	60
At 31 March 2015	191	319	510
Net Book Value At 31 March 2015	276	46	322
At 31 March 2014	157	25	182

In the opinion of the directors the building comprising the National Training Centre has a nil value due to it being sited on land leased from the Royal National Orthopaedic Hospital and hence subject to certain restrictions. On this basis the building and certain associated equipment have been shown in the accounts of Aspire at a cost of nil, being depreciated cost less capital grants received.

7. INVESTMENT

	Group		Charity	
	<u>2015</u> £'000	<u>2014</u> £'000	<u>2015</u> £'000	<u>2014</u> £'000
Shares in subsidiary undertaking	-	-	-	-
Other investments (note 7.1)	1,618	1,632	1,618	1,632
	1,618	1,632	1,618	1,632

Aspire is the beneficial owner of 10 ordinary shares of £1 each being the whole of the issued share capital of Aspire Fundraising Limited, a company incorporated in England.

Aspire is the beneficial owner of 1 ordinary share of £1 each of Aspire Trading 2014 Limited, a company incorporated in England on 27 January 2014.

ASSOCIATION FOR SPINAL INJURY RESEARCH REHABILITATION AND REINTEGRATION

'ASPIRE'

Notes To The Financial Statements

7.1 OTHER INVESTMENTS

	2015 £'000	2014 £'000
Market value at 1 April	1,632	2,654
Additions at cost	850	5
Proceeds on disposal	(973)	(1,105)
Gain/(loss) on revaluation	109	78
Market value at 31 March	1,618	1,632
Historical cost at 31 March	1,734	1,734
CAF Bond Income Units	53	50
CCLA	1,157	238
Aspire Trading	-	-
Sub co.	-	-
Ashcourt Rowan Asset Management	408	1,344
Principality	-	-
	1,618	1,632

8. STOCK

	Group		Charity	
	2015 £'000	2014 £'000	2015 £'000	2014 £'000
Goods for sales	1	2	-	-

9. DEBTORS

Other debtors	173	146	139	94
Prepayments and accrued income	439	911	319	775
	612	1,057	458	869

10. CREDITORS: Amounts falling due within one year

Trade creditors	122	175	115	158
Subscriptions in advance	190	277	190	125
Other taxes and social security costs	51	35	51	35
Accruals and deferred income	315	197	171	195
	678	684	527	513

ASSOCIATION FOR SPINAL INJURY RESEARCH REHABILITATION AND REINTEGRATION

'ASPIRE'

Notes To The Financial Statements

11. RESTRICTED FUNDS	Balance 1 April <u>2014</u> £	Incoming Resources £	Utilised/ Released £	Investment gain & Transfers £	Balance 31 March <u>2015</u> £
Aspire Research Fund	1,097	-	(157)		940
Aspire Housing Fund	538	334	(302)		570
Physio Fund	-	-	-		-
Spinal Injury Centre	-	-	-		-
Wheelchair Basketball	-	-	-		-
Assistive Technology Fund	-	23	(23)		-
Independent Living Fund	-	80	(80)		-
Mary Tye Fund	37	-	-		37
Capital Grants Fund	19	-	(2)		17
Graham Nicholson Fund	18	-	-		18
InstructAbility Programme (Sports England)	754	-	(117)		637
Sport Development	-	14	(14)		-
REX Bionix Fund	-	1	-		1
	<u>2,463</u>	<u>452</u>	<u>(695)</u>	<u>-</u>	<u>2,220</u>

The Aspire Research Fund has been established to support research in disability and technology through the Aspire Centre for Rehabilitation Engineering and Assistive Technology, University College London Institute of Orthopaedics and Musculoskeletal Sciences, based at the Royal National Orthopaedic Hospital. The purpose of the research undertaken through the Aspire Centre is to demonstrate, by using internationally recognised best practice, how marked improvement in function and quality of life can be achieved in a cost effective manner. The value of this research will benefit some of the most disadvantaged members of our society with physical disabilities.

Aspire Housing provides temporary homes in the local community in key locations in England, Wales and Scotland for newly discharged patients. Spinally injured individuals may temporarily live in a specially adapted and fully accessible comfortable environment on their own or with their family, whilst arrangements are made to meet their long-term housing needs. We are extremely grateful to Thomas Gibson and supporters of the Harebell Appeal as well as many other individuals and Trusts for their financial support during the year.

The Physio Fund supports the purchase of incidental equipment that will benefit patients and assist the Occupational and Physiotherapists, at the Royal National Orthopaedic Hospital, with the rehabilitation of patients with a spinal cord injury.

The Spinal Centre Fund receives donations from patients and families of patients. These funds are used to purchase a wide range of incidental items in support of patients.

Aspire provides financial support to cover some of the expenses for the Wheelchair Basketball and Wheelchair Rugby based at the Aspire Leisure Centre and nationally.

ASSOCIATION FOR SPINAL INJURY RESEARCH REHABILITATION AND REINTEGRATION

'ASPIRE'

Notes To The Financial Statements

11. RESTRICTED FUNDS (Continued)

Our Assistive Technology programme provides specialist computer equipment, software and training support to teach people with a spinal cord injury with limited or no physical ability to operate a computer. This service is provided through Occupational Therapy Departments and dedicated rooms to give patients valuable access to the internet and permits communication with family, friends and work colleagues worldwide. Through generous grants from the James Tudor Foundation this service has been provided in the majority of Spinal Injury Centres throughout England, Wales, Northern Ireland and the Republic of Ireland.

The Independent Living fund includes a restricted Big Lottery Fund Grant and sponsorship from Aspire Law LLP and PR Hanna Solicitors. This money is given in support of employing Independent Living Advisors who provide direct practical support, information and guidance to new spinally injured patients and for the management of the team of Independent Living Advisors.

The Mary Tye Fund has been set up to support spinal cord injury research approved by the UK Spinal Cord Injury Research Network. The fund was established by the kind and generous donation from Mrs Mary Tye.

The Capital Grants Fund represents grants received for the purchase of tangible fixed assets and is released at a rate consistent with the depreciation charged on these assets.

The Graham Nicholson Fund was set up after his death in a motor accident in 2006. Dr Graham Nicholson was a highly regarded senior research fellow in the Aspire Centre for Rehabilitation Engineering and Assistive Technology, Institute of Orthopaedics and Musculoskeletal Science, University College London. This fund will provide financial support to research students who continue to work in the field of disability and technology to which Dr Nicholson was so dedicated.

We are most grateful to the National Lottery Sport England Fund for the grant of £854k in support of training disabled people to become fitness professionals through our InstructAbility programme that is running over a three year period.

ASSOCIATION FOR SPINAL INJURY RESEARCH REHABILITATION AND REINTEGRATION

'ASPIRE'

Notes To The Financial Statements

12. UNRESTRICTED FUNDS	Balance 1 April <u>2014</u> £	<u>Income</u> £	<u>Expenditure</u> £	Investment gain <u>Transfers</u> £	Balance 31 March <u>2015</u> £
Designated Funds					
Aspire Grants Designated Fund	24	58	(82)	-	-
Your fund	40	16	(48)	-	8
Integrated Arts and Dance Designated	2	-	(1)	-	1
Building Fund Designated	95	-	(50)	-	45
	<u>161</u>	<u>74</u>	<u>(181)</u>	<u>-</u>	<u>54</u>
Other					
Profit & loss account	314	2,765	(2,670)	108	517
	<u>475</u>	<u>2,839</u>	<u>(2,851)</u>	<u>108</u>	<u>571</u>

Designated funds form part of Unrestricted Funds and are amounts set aside by the Trustees to meet specific future requirements of the organisation. Further details of these funds are shown below:

Aspire Grants provides financial support to spinal cord injured people to assist in the purchasing of specialist equipment to improve their daily independence.

Your Fund delivers the same function as Aspire Grants but allows benefactors to raise money and donate for specific purposes.

The Aspire Centre is now more than seventeen years old and the Trustees aim to maintain a fund to support any possible unplanned/unforeseen major cost of repair. This is why we hold a Building Fund.

ASSOCIATION FOR SPINAL INJURY RESEARCH REHABILITATION AND REINTEGRATION

'ASPIRE'

Notes To The Financial Statements

13. ALLOCATION OF CHARITY NET ASSETS

The net assets of the charity are held for the various funds as follows:

	<u>Fixed Assets</u> £'000	<u>Investments</u> £'000	<u>Current Assets</u> £'000	<u>Current Liabilities</u> £'000	<u>Total 2015</u> £'000
Restricted funds	-	1,618	602	-	2,220
Unrestricted funds	322	-	927	(678)	571
	<u>322</u>	<u>1,618</u>	<u>1,529</u>	<u>(678)</u>	<u>2,791</u>

14. PENSION

The company contributes to a defined contribution pension scheme in respect of its employees. The contributions payable are charged to the Statement of Financial Activities. Pension contributions for the year amounted to £35,570 (2014: £26,291).