

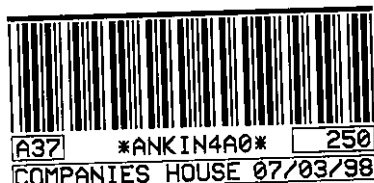


COMPANIES HOUSE

BB 005749
#105x7 363s

Annual Return

THE REGISTRAR OF COMPANIES
COMPANIES HOUSE
CROWN WAY
CARDIFF
CF4 3UZ



of company number 03088098

D

company name
MEADOWGOLD LIMITED

company type
PRIVATE COMPANY LIMITED BY GUARANTEE
WITHOUT SHARE CAPITAL

This form should be completed in black.

The information printed below is taken from Companies House records as at 07/11/97

If this information requires amendment use the spaces opposite.

Date of this return (See note 1)

The information in this return should be made up to a date not later than

Day	Month	Year
07	08	97

If you are making the return up to an earlier date, show the date here. Please note that the form must be delivered to Companies House within 28 days of this earlier date.

Day	Month	Year

Date of next return (See note 2)

If you wish to make your next return to a date earlier than the anniversary of this return please show the date here. Companies House will then send a form at the appropriate time.

Day	Month	Year

Registered Office (See note 3)

This is the address registered by Companies House.

HARFORD HOUSE
101-103 GREAT PORTLAND STREET
LONDON
WIN 6BH

.....
.....
.....
.....

Principal business activities (See note 4)

Trade classification is
7511 GENERAL (OVERALL) PUBLIC SERVICE

--	--	--	--

--	--	--	--

--	--	--	--

--	--	--	--

If the code cannot be determined from the notes, give a brief description of principal activity.

03088098

Register of members (See note 5)

If the information shown needs amendment, give details below and, for secretary and director particulars, the date of any change.

The register is kept at

REGISTERED OFFICE

.....
.....
.....
.....

Register of debenture holders (See note 6)

Any register of debenture holders (or duplicate) is kept at

.....
.....
.....
.....

Company Secretary (See note 7)

Particulars of a new secretary **must** be notified on form 288.

Day	Month	Year

Date of any change.

.....
.....
.....
.....
.....
.....
.....
.....

GINA
WIESENFELD
59 HIGHFIELD GARDENS
LONDON
NW11

If this person has ceased to be secretary, please state when.

Day	Month	Year

Date of resignation.

Directors (See note 7)

Particulars of a new director **must** be notified on form 288.

Day	Month	Year

Date of any change.

LEAH
LAST
18 GREEN WALK
LONDON
NW4 2AJ

Date of Birth:- 02/05/32
Nat:BRITISH
Occ:COMPANY DIRECTOR

If this person has ceased to be director, please state when.

Day	Month	Year

Date of resignation.

Show any relevant current and previous directorships.

DIRECTORSHIPS LISTED
.....
.....
.....

If the information shown needs amendment,
give details below and the date of any change.

Directors - continued

Particulars.

GINA
WIESENFELD
59 HIGHFIELD GARDENS
LONDON
NW11

Day Month Year

Day	Month	Year

Date of any change.

Date of Birth:- 02/10/58

Nat:BRITISH

Occ:SECRETARY

If this person has ceased to be director, please
state when.

Day Month Year

Day	Month	Year

Date of resignation.

Show any relevant current and previous directorships.

NONE

Particulars.

MORRIS
WIESENFELD
59 HIGHFIELD GARDENS
LONDON
NW11 9HA

Day Month Year

Day	Month	Year

Date of any change.

Date of Birth:- 22/06/57

Nat:BRITISH

Occ:COMPANY DIRECTOR

If this person has ceased to be director, please
state when.

Day Month Year

Day	Month	Year

Date of resignation.

Show any relevant current and previous directorships.

PROMERANITE LIMITED
LARGO LIMITED
LUCER LIMITED

Particulars.

Day Month Year

Day	Month	Year

Date of any change.

NO MORE DIRECTORS - ADDITIONAL SECRETARIES
OR DIRECTORS MUST BE NOTIFIED ON FORM 288a.

If this person has ceased to be director, please
state when.

Day Month Year

Day	Month	Year

Date of resignation.

Show any relevant current and previous directorships.

Elective resolutions (See note 10)

(Private companies only)

If an elective resolution is in force at the date of this return to dispense with annual general meetings, *mark this box.*

☐

If an elective resolution is in force at the date of this return to dispense with laying accounts in general meetings, *mark this box.*

☐**Certificate**

I certify that the information given in this return is true to the best of my knowledge and belief.

I enclose the fee of **£15.**

Cheques should be made payable to **Companies House.**

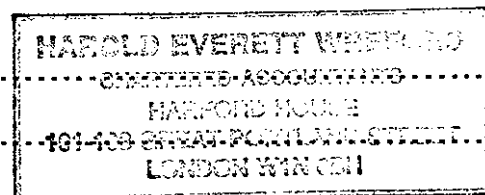
Signed

X M W
[Signature]
Secretary/Director*
*(delete as appropriate)

Date

This return includes NIL continuation sheets.
(enter number)

To whom should Companies House direct any enquiries about the information shown in this return?----->



Postcode

Telephone 0171-637-8891 Ext 41

LIST OF DIRECTORSHIPS OF LEAH LAST

LANGO LIMITED
DEBENET LIMITED
RIGHTBAR LIMITED
PREMIERQUOTE LIMITED
CLAIMWORTH LIMITED
MEADOWGOLD LIMITED