



COMPANIES HOUSE

1312
504167 1420X28

THE REGISTRAR OF COMPANIES
COMPANIES HOUSE
CROWN WAY
CARDIFF
CF4 3UZ



KLO K2G126V0 2560
COMPANIES HOUSE 08/06/98

363s

Annual Return

of company number 02028741

D

company name
CAPITAL AND REGIONAL PROPERTY
MANAGEMENT LIMITED

company type
PRIVATE COMPANY LIMITED BY SHARES

This form should be completed in black.

The information printed below is taken from Companies House records as at 24/04/98
If this information requires amendment use the spaces opposite.

Date of this return (See note 1)

The information in this return should be made up to a date not later than

Day	Month	Year
10	05	98

If you are making the return up to an earlier date, show the date here. Please note that the form must be delivered to Companies House within 28 days of this earlier date.

Day	Month	Year

Date of next return (See note 2)

If you wish to make your next return to a date earlier than the anniversary of this return please show the date here. Companies House will then send a form at the appropriate time.

Day	Month	Year

Registered Office (See note 3)

This is the address registered by Companies House.
22 GROSVENOR GARDENS
LONDON
SW1 0DH

Principal business activities (See note 4)

Trade classification is
7011 DEVELOPMENT & SELL REAL ESTATE

7	0	1	1
---	---	---	---

If the code cannot be determined from the notes, give a brief description of principal activity.

--	--	--	--

--	--	--	--

--	--	--	--

02028741

If the information shown needs amendment, give details below and, for secretary and director particulars, the date of any change.

Register of members (See note 3)

The register is kept at

REGISTERED OFFICE

Register of debenture holders (See note 6)

Any register of debenture holders (or duplicate) is kept at

Company Secretary (See note 7)

Particulars of a new secretary must be notified on form 288.

LYNDA SHARON
CORAL
26 DENE ROAD
NORTHWOOD
MIDDLESEX HA6 2BT

Day Month Year

--	--	--

Date of any change.

If this person has ceased to be secretary, please state when.

Day Month Year

--	--	--

Date of resignation.

Directors (See note 7)

Particulars of a new director must be notified on form 288.

HARTIN
BARBER
28 STORMONT ROAD
LONDON
N6 4NP

Day Month Year

--	--	--

Date of any change.

Date of Birth:- 03/08/44
Nat: BRITISH
Occ: COMPANY DIRECTOR

If this person has ceased to be director, please state when.

Day Month Year

--	--	--

Date of resignation.

Show any relevant current and previous directorships.

See attached list

02028741

If the information shown needs amendment, give details below and the date of any change.

Directors - continued**Particulars.**

SIMON
BERRY
157 CLONMORE STREET
LONDON
SW18 5HD

Date of Birth:- 20/07/66
Nat:BRITISH
Occ:COMPANY DIRECTOR

If this person has ceased to be director, please state when.

Show any relevant current and previous directorships.

Day Month Year

--	--	--

Date of any change.

Day Month Year

--	--	--

Date of resignation.

*See attached history***Particulars.**

ROGER MICHAEL
BOYLAND
NEPEAN HOUSE
NEPEAN STREET ROEHAMPTON
LONDON
SW15 5DW

Date of Birth:- 07/09/44
Nat:BRITISH
Occ:CHARTERED ACCOUNTANT

If this person has ceased to be director, please state when.

Show any relevant current and previous directorships.

Day Month Year

--	--	--

Date of any change.

Day Month Year

--	--	--

Date of resignation.

*See attached history***Particulars.**

LYNDA SHARON
CORAL
26 DENE ROAD
NORTHWOOD
MIDDLESEX HA6 2BT

Date of Birth:- 10/09/61
Nat:BRITISH
Occ:CHARTERED ACCOUNTANT

If this person has ceased to be director, please state when.

Show any relevant current and previous directorships.

Day Month Year

--	--	--

Date of any change.

Day Month Year

--	--	--

Date of resignation.

See attached history

02028741

If the information shown needs amendment, give details below and the date of any change.

Directors - continued

Particulars.

KENNETH CHARLES
FORD
27 RODDINGHEAD ROAD
GIFFNOCK
GLASGOW
LANARKSHIRE G46 6TR

Date of Birth:- 12/05/53
Nat:BRITISH
Occ:COMPANY DIRECTOR

If this person has ceased to be director, please state when.

Show any relevant current and previous directorships.

Day Month Year
Date of any change.

Day Month Year
Date of resignation.

See attached list

Particulars.

RICHARD WILLIAM
GORE
ARICS
79 WHELLOCK ROAD BEDFORD PARK
CHISWICK
LONDON
W4 1DY
ENGLAND

Date of Birth:- 06/02/62
Nat:BRITISH
Occ:CHARTERED SURVEYOR

If this person has ceased to be director, please state when.

Show any relevant current and previous directorships.

Day Month Year
Date of any change.

Day Month Year
Date of resignation.

See attached list

Particulars.

ANDREW
LEWIS-PRATT
ARICS
27A LITTLE CHELSEA MEWS
CHARLES STREET BARNES
LONDON
SW13 0NZ

Date of Birth:- 01/02/58
Nat:BRITISH
Occ:CHARTERED SURVEYOR

If this person has ceased to be director, please state when.

Show any relevant current and previous directorships.

Day Month Year
Date of any change.

Day Month Year
Date of resignation.

See attached list

02028741

If the information shown needs amendment, give details below and the date of any change.

Directors - continued

Particulars.

XAVIER
PULLEN
65 SOUTHWAY
LONDON
NW11 6SB
ENGLAND

Date of Birth:- 30/05/51

Nat: BRITISH

Occ: COMPANY DIRECTOR

If this person has ceased to be director, please state when.

Show any relevant current and previous directorships.

Day Month Year

--	--	--	--

Date of any change.

Day Month Year

--	--	--	--

Date of resignation.

See attached info.

Particulars.

NO MORE DIRECTORS - ADDITIONAL SECRETARIES
OR DIRECTORS MUST BE NOTIFIED ON FORM 288a.

If this person has ceased to be director, please state when.

Show any relevant current and previous directorships.

Day Month Year

--	--	--	--

Date of any change.

Day Month Year

--	--	--	--

Date of resignation.

Particulars.

NO MORE DIRECTORS - ADDITIONAL SECRETARIES
OR DIRECTORS MUST BE NOTIFIED ON FORM 288a.

If this person has ceased to be director, please state when.

Show any relevant current and previous directorships.

Day Month Year

--	--	--	--

Date of any change.

Day Month Year

--	--	--	--

Date of resignation.

Issued Share Capital (See note 8)

02028741

Class
(eg Ordinary,
Preference etc.)

Number of
shares issued

Aggregate
nominal value

(ie Number of shares issued multiplied by nominal value per share)

Enter details of all shares in issue at the date of this return.

Ordinary	100	£100
£1.		
Totals	100	£100

List of past and present members

(See note 9)

(Use attached schedule where appropriate)

A full list is required if one was not included with either of the last two returns.

Please mark the appropriate box.

There were no changes in the period

The last full members list was at 10/05/96

	on paper	not on paper
A list of changes is enclosed	<input type="checkbox"/>	<input type="checkbox"/>
A full list of members is enclosed	<input type="checkbox"/>	<input type="checkbox"/>

Elective resolutions (See note 10)

Effective 1/1/2014
(Private companies only)

If an elective resolution is in force at the date of this return to dispense with annual general meetings, mark this box.

If an elective resolution is in force at the date of this return to dispense with laying accounts in general meetings, *mark this box.*

Certificate

I certify that the information given in this return is true to the best of my knowledge and belief.

I enclose the fee of £ 15.

Cheques should be made payable to Companies House.

Signed

Date 5/6/58

Secretary/Director

**(delete as appropriate)*

This return includes **continuation sheets.**

Please ensure that you have completed all sections on this page.

To whom should Companies House direct any enquiries about the information shown in this return?

Anr. Dalton
Assistant Company Secretary
22 Grosvenor Gardens
London
SW1W 0DH

Telephone: 0171 730 5565

Telophone	Ext
------------------	------------

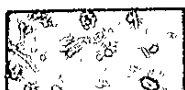
DIRECTORSHIPS OF MARTIN BARBER

Capital and Regional Properties plc
Capital and Regional (Norwich) Limited
Capital and Regional Out-of-Town Ltd
Sports Villages (Milton Keynes) Limited
The Howgate Shopping Centre Limited
Capital and Regional Shopping Centres Limited
Capital and Regional Property Management Limited
Capital and Regional Investments Limited
Capital and Regional Property Investments Limited
Capital and Regional Estates Limited
Capital and Regional UK Holdings Limited
Capital and Regional USA Holdings Limited
Capital and Regional (Victoria) Limited
Capital and Regional (Swindon) Limited
Capital and Regional Developments (Newton Abbot) Limited
Capital and Regional (Salford) Limited
Capital and Regional (Bristol) Limited
Capital and Regional Retail (Northern) Limited
Capital and Regional Retail (York) Limited
Capital and Regional (Kingston) Limited
Capital and Regional (Leicester) Limited
Capital and Regional (Sunderland) Limited
Capital and Regional Green Holdings Limited
Capital and Lanham Retail Parks Limited
Capital and Lanham Retail Parks (Wolverhampton) Limited
Realcap Investments Limited
Realcap Management Limited
Dawncross Limited
Owlamber Limited
Cosmorole Limited
Branchlook Limited
Favourshaw Limited
Churchwick Investments Limited
Datadash Limited
Capital and Regional Limited
Jearon Properties Limited
Betterdash Limited

Philcap One Limited
Philcap Two Limited
Lancap One Limited
Lancap Two Limited
St Andrew House (Glasgow) Limited

Framematch Limited

Easter Holdings Limited
Easter Capital Investment Holdings Limited
Easter Capital Investment Limited
The Easter Management Group (Scotland) Limited
Capital and Easter (Sunderland) Limited
Capital and Easter (Glasgow) Limited



Capital and Lanham PLC

Primesight Limited

Pricoa Property Investment Management Limited

Transeuropean Properties (General Partner) Limited

Twelve Quays Limited

Twelve Quays One Limited

Birkenhead Ports Limited

R Green Properties (Holdings)

R Green (Brighton) Limited

R Green (Bedford) Limited

Lancaster Court (Hove) Limited

Green-Sinfield Limited

R Green Properties (Management) Limited

R Green Properties Limited

Rayshire Properties Limited

R Green Developments (No 6) Limited

R Green Developments (No 12) Limited

R Green Developments (No 18) Limited

In liquidation

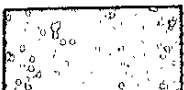
R Green Developments (No 3) Limited

R Green Developments (No 4) Limited

R Green Developments (No 5) Limited

R Green Developments (No 7) Limited

22.10.96/COSEC/MARTIN



DIRECTORSHIPS OF ROGER ROYLAND

Capital and Regional Properties plc *
Capital and Regional (Norwich) Limited
Capital and Regional Out-of-Town Ltd
Sports Villages (Milton Keynes) Limited
The Howgate Shopping Centre Limited
Capital and Regional Shopping Centres Limited
Capital and Regional Property Management Limited
Capital and Regional Investments Limited
Capital and Regional Property Investments Limited
Capital and Regional Estates Limited
Capital and Regional UK Holdings Limited *
Capital and Regional USA Holdings Limited *
Capital and Regional Green Holdings Limited
Capital and Regional (Victoria) Limited
Capital and Regional (Swindon) Limited
Capital and Regional Developments (Newton Abbot) Limited
Capital and Regional (Salford) Limited
Capital and Regional (Bristol) Limited
Capital and Regional Retail (Northern) Limited
Capital and Regional Retail (York) Limited
Capital and Regional (Kingston) Limited
Capital and Regional (Leicester) Limited
Capital and Regional (Sunderland) Limited
Capital and Lanham Retail Parks Limited
Capital and Lanham Retail Parks (Wolverhampton) Limited
Realcap Investments Limited
Realcap Management Limited
Dawncross Limited
Owlamber Limited
Cosmore Limited
Branchlook Limited
Favourshaw Limited
Churchwick Investments Limited
Datadash Limited
Capital and Regional Limited
Jearon Properties Limited
Betterdash Limited
St Andrew House (Glasgow) Limited
Philcap One Limited
Philcap Two Limited
Lancap One Limited
Lancap Two Limited
Exchange Court Properties Ltd

Framematch Limited

Capital and Easter (Sunderland) Limited *
Hylton Riverside One Limited
Hylton Riverside Two Limited
Hylton Riverside Three Limited
Capital and Easter (Argyle) Limited
Capital and Easter (Glasgow) Limited

The Easter Management Group (Scotland) Limited

The Easter Morrison Partnership Limited *

Capital and Lanham PLC *

Charterboat Enterprises Limited *

R Green Properties (Holdings) *

R Green Properties Limited

R Green (Investments) Limited

R Green (Brighton) Limited

R Green (Bedford) Limited

Lancaster Court (Hove) Limited

Green-Sinfield Limited

R Green Properties (Management) Limited

R Green Developments (No 6) Limited

R Green Developments (No 12) Limited

R Green Developments (No 18) Limited

Rayshire Properties Limited

Cussins Green Commercial Developments Limited

In liquidation

Cussins Green Developments (No 2) Limited

R Green Developments (No 3) Limited

R Green Developments (No 4) Limited

R Green Developments (No 5) Limited

R Green Developments (No 7) Limited

R Green Developments (No 9) Limited

R Green Developments (No 11) Limited

R Green Developments (No 16) Limited

R Green Developments (No 17) Limited

R Green Developments (No 19) Limited

R Green Developments (No 21) Limited

Regency Properties (Sussex) Limited

N Sherwood Limited

Devonshire Court (Hove) Limited

Cussins Green Portfolio Management Limited

A W Ounsted Limited

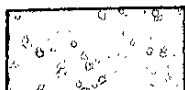
Alfred Knight (Builders) Limited

Westville Investment Trust Limited

Sinnington Securities Limited

Richbourne Limited

• Primary Directorships



DIRECTORSHIPS OF LINDA CORAL

Capital and Regional Properties plc
Capital and Regional (Norwich) Limited
Capital and Regional Out-of-Town Ltd
The Collection Cafe Limited
Sports Villages (Milton Keynes) Limited
The Howgate Shopping Centre Limited
Capital and Regional Shopping Centres Limited
Capital and Regional Property Management Limited
Capital and Regional Investments Limited
Capital and Regional Property Investments Limited
Capital and Regional Estates Limited
Capital and Regional UK Holdings Limited
Capital and Regional USA Holdings Limited
Capital and Regional (Victoria) Limited
Capital and Regional (Swindon) Limited
Capital and Regional Developments (Newton Abbot) Limited
Capital and Regional (Salford) Limited
Capital and Regional (Bristol) Limited
Capital and Regional Retail (Northern) Limited
Capital and Regional Retail (York) Limited
Capital and Regional (Kingston) Limited
Capital and Regional (Leicester) Limited
Capital and Regional (Sunderland) Limited
Capital and Regional Green Holdings Limited
Capital and Lanham Retail Parks Limited
Capital and Lanham Retail Parks (Wolverhampton) Limited
Realcap Management Limited
Realcap Investments Limited
Dawncross Limited
Owlamber Limited
Cosmorole Limited
Branchlook Limited
Favourshaw Limited
Churchwick Investments Limited
Datadash Limited
Capital and Regional Limited
Jearon Properties Limited
Betterdash Limited
St Andrew House (Glasgow) Limited
Philcap One Limited
Philcap Two Limited
Lancap One Limited
Lancap Two Limited
Capital and Lanham plc

Framematch Limited

Easter Holdings Limited
Easter Capital Investment Holdings Limited
Easter Capital Investment Limited
Twelve Quays One Limited
London and Amsterdam Properties Limited
The Easter Management Group (Scotland) Limited



Capital and Easter (Argyle) Limited
Capital and Easter (Glasgow) Limited
Easter Properties (North-East) Limited

Twelve Quays Limited

R Green (Brighton) Limited
R Green (Bedford) Limited
Lancaster Court (Hove) Limited
Green-Sinfield Limited
R Green Properties (Management) Limited
R Green Properties Limited
R Green Properties (Holdings)
R Green (Investments) Limited
R Green Developments (No 6) Limited
R Green Developments (No 12) Limited
R Green Developments (No 18) Limited
Rayshire Properties Limited
Cussins Green Commercial Developments Limited

In liquidation

R Green Developments (No 3) Limited
R Green Developments (No 4) Limited
R Green Developments (No 5) Limited
R Green Developments (No 7) Limited
R Green Developments (No 9) Limited
R Green Developments (No 11) Limited
R Green Developments (No 16) Limited
R Green Developments (No 17) Limited
R Green Developments (No 19) Limited
R Green Developments (No 21) Limited
Cussins Green Portfolio Management Limited
Cussins Green Developments (No 2) Limited
Cussins Green Developments (No 13) Limited
N Sherwood Limited
Sinnington Securities Limited
Devonshire Court (Hove) Limited
Alfred Knight (Builders) Limited
Regency Properties (Sussex) Limited
Richbourne Limited
Westville Investment Trust Limited
Praisegood Limited
A W Ounsted Limited

DIRECTORSHIPS OF XAVIER PULLEN

Capital and Regional Properties plc
Capital and Regional (Norwich) Limited
Capital and Regional Out-of-Town Limited
Sports Villages (Milton Keynes) Limited
The Howgate Shopping Centre Limited
Capital and Regional Shopping Centres Limited
Capital and Regional Property Management Limited
Capital and Regional Investments Limited
Capital and Regional Property Investments Limited
Capital and Regional Estates Limited
Capital and Regional UK Holdings Limited
Capital and Regional USA Holdings Limited
Capital and Regional (Victoria) Limited
Capital and Regional (Swindon) Limited
Capital and Regional Developments (Newton Abbot) Limited
Capital and Regional (Salford) Limited
Capital and Regional (Bristol) Limited
Capital and Regional Retail (Northern) Limited
Capital and Regional Retail (York) Limited
Capital and Regional (Kingston) Limited
Capital and Regional (Leicester) Limited
Capital and Regional (Sunderland) Limited
Capital and Regional Green Holdings Limited
Capital and Lanham Retail Parks Limited
Capital and Lanham Retail Parks (Wolverhampton) Limited
Realcap Investments Limited
Realcap Management Limited
Dawncross Limited
Owlamber Limited
Cosmorole Limited
Branchlook Limited
Favourshaw Limited
Churchwick Investments Limited
Datadash Limited
Capital and Regional Limited
Jearon Properties Limited
Betterdash Limited
St Andrew House (Glasgow) Limited
Philcap One Limited
Philcap Two Limited
Lancap One Limited
Lancap Two Limited
The Easter Management Group (Scotland) Limited
Framematch Limited
Capital and Lanham plc

R Green (Brighton) Limited
R Green (Bedford) Limited
Lancaster Court (Hove) Limited
Green-Sinfield Limited
R Green Properties (Management) Limited
R Green Properties Limited
Rayshire Properties Limited



Praisegood Limited

R Green Properties (Holdings)

R Green Developments (No 6) Limited

R Green Developments (No 12) Limited

R Green Developments (No 18) Limited

In liquidation

R Green Developments (No 3) Limited

R Green Developments (No 4) Limited

R Green Developments (No 5) Limited

R Green Developments (No 7) Limited

Cussins Green Developments (No 13) Limited

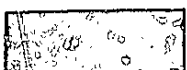
22.10.96/COSEC/XAVIER



CURRENT DIRECTORSHIPS OF K. C. FORD

No	Company
1.	Capital and Regional Properties plc
2.	Capital and Easter (Glasgow) Limited
3.	Capital and Easter (Argyle) Limited
4.	Capital and Regional Retail (York) Limited
5.	The Easter Morrison Partnership Limited
6.	Edinburgh Development Group plc
7.	Edinburgh Construction Services Limited
8.	EFE Limited
9.	Pacific Shelf 360 Limited
10.	Easter Netherton Limited
11.	Capital and Regional Retail (Northern) Ltd
12.	St. Andrew House Glasgow Ltd
13.	Easter Management Group Scotland Ltd
14.	Four Seasons Nurseries (Scotland) Limited
15.	Canning Street Property Company Limited
16.	The Howgate Shopping Centre Limited
17.	Exchange Court Properties Limited
18.	Capital and Regional (Norwich) Ltd
19.	Capital and Regional Limited
20.	The Collection Cafe Limited

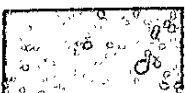
F:\ad\docs\cosec\ds hips\ken2
As at May 1998



Directorships of Simon Berry

Capital and Lanham Construction (Coventry) Limited
Capital and Lanham Construction Limited
Capital and Lanham Developments (Barnstaple) Limited
Capital and Lanham Developments (Benlley Bridge) Limited
Capital and Lanham Developments (Cannock) Limited
Capital and Lanham Developments (Croydon) Limited
Capital and Lanham Developments (Dagenham) Limited
Capital and Lanham Developments (Doncaster) Limited
Capital and Lanham Developments (Midlands) Limited
Capital and Lanham Developments (Northampton) Limited
Capital and Lanham Developments (Orchard) Limited
Capital and Lanham Developments (Pontefract) Limited
Capital and Lanham Developments (Ripon) Limited
Capital and Lanham Developments (Telford) Limited
Capital and Lanham Estates Limited
Capital and Lanham Holding Camarham Limited
Capital and Lanham Holdings Limited
Capital and Lanham Intown Leamington Limited
Capital and Lanham PLC
Capital and Lanham Projects No 1 Limited
Capital and Lanham Retail Parks (Coventry) Ltd
Capital and Lanham Retail Parks (Southern) Limited
Capital and Lanham Retail Parks Developments Limited
Capital and Lanham Scotland Limited
Capital and Lanham Wembley Limited
Capital and Regional Out-of-Town Limited
Sports Villages (Milton Keynes) Ltd
Sports Villages Developments Ltd (50% owned)

Capital and Regional Investments Limited
Capital and Regional Property Management Ltd
Capital and Lanham Retail Parks Limited



OUTSIDE DIRECTORSHIPS

Zedmate Ltd
Zedmate Developments Ltd
Zedmate Developments (Beckenham) Ltd
Zedmate Developments (Battersea) Ltd
Zedmate Developments (Southern) Ltd
Zedmate Developments (Oxford) Ltd
Zedmate Developments Thanet Ltd
Zedmate Developments (NUL) Ltd
Zedmate Developments (Camarthan) Ltd
Zedmate Developments (Pittlochry) Ltd
Zedmate Northern Ltd
Zedmate Developments (Leamington Spa) Ltd
Zedmate Developments (Barnsley) Ltd
Zedmate Developments (Perth) Ltd
Zedmate Intown Ltd
Zedmate International Developments Ltd
Zedmate Developments (Wolverhampton) Ltd
Zedmate Developments (Middletown) Ltd
Zedmate Developments Paisley Ltd
Zedmate Retail Parks (Coventry) Ltd

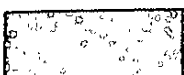
West 1 on One Limited



Directorships of Richard Gore

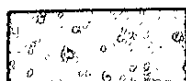
Capital and Lanham Construction (Coventry) Limited
Capital and Lanham Construction Limited
Capital and Lanham Developments (Barnstaple) Limited
Capital and Lanham Developments (Bentley Bridge) Limited
Capital and Lanham Developments (Cannock) Limited
Capital and Lanham Developments (Croydon) Limited
Capital and Lanham Developments (Dagenham) Limited
Capital and Lanham Developments (Doncaster) Limited
Capital and Lanham Developments (Midlands) Limited
Capital and Lanham Developments (Northampton) Limited
Capital and Lanham Developments (Orchard) Limited
Capital and Lanham Developments (Pontefract) Limited
Capital and Lanham Developments (Ripon) Limited
Capital and Lanham Developments (Telford) Limited
Capital and Lanham Estates Limited
Capital and Lanham Holding Camarian Limited
Capital and Lanham Holdings Limited
Capital and Lanham Intown Leamington Limited
Capital and Lanham PLC
Capital and Lanham Projects Not Limited
Capital and Lanham Retail Parks (Coventry) Ltd
Capital and Lanham Retail Parks (Southern) Limited
Capital and Lanham Retail Parks Developments Limited
Capital and Lanham Scotland Limited
Capital and Lanham Wembley Limited
Capital and Regional Out-of-Town Limited

Capital and Regional Investments Limited
Capital and Regional Property Management Ltd
Capital and Lanham Retail Parks Limited



OUTSIDE DIRECTORSHIPS

Zedmate Ltd
Zedmate Developments Ltd
Zedmate Developments (Beckenham) Ltd
Zedmate Developments (Battersea) Ltd
Zedmate Developments (Southern) Ltd
Zedmate Developments (Oxford) Ltd
Zedmate Developments Thanet Ltd
Zedmate Developments (NUL) Ltd
Zedmate Developments (Camrathan) Ltd
Zedmate Developments (Pliochry) Ltd
Zedmate Northern Ltd
Zedmate Developments (Leamington Spa) Ltd
Zedmate Developments (Barnsley) Ltd
Zedmate Developments (Perth) Ltd
Zedmate Intown Ltd
Zedmate International Developments Ltd
Zedmate Developments (Wolverhampton) Ltd
Zedmate Developments (Middleton) Ltd
Zedmate Developments Paisley Ltd
Zedmate Retail Parks (Coventry) Ltd

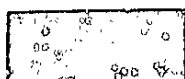


Directorships of Andrew Lewis- Pratt

Capital and Lanham Construction (Coventry) Limited
Capital and Lanham Construction Limited
Capital and Lanham Developments (Barnstaple) Limited
Capital and Lanham Developments (Bentley Bridge) Limited
Capital and Lanham Developments (Cannock) Limited
Capital and Lanham Developments (Croydon) Limited
Capital and Lanham Developments (Dagenham) Limited
Capital and Lanham Developments (Doncaster) Limited
Capital and Lanham Developments (Midlands) Limited
Capital and Lanham Developments (Northampton) Limited
Capital and Lanham Developments (Orchard) Limited
Capital and Lanham Developments (Pontefract) Limited
Capital and Lanham Developments (Ripon) Limited
Capital and Lanham Developments (Telford) Limited
Capital and Lanham Estates Limited
Capital and Lanham Holding Camarhan Limited
Capital and Lanham Holdings Limited
Capital and Lanham Intown Leamington Limited
Capital and Lanham PLC
Capital and Lanham Projects No1 Limited
Capital and Lanham Retail Parks (Coventry) Limited
Capital and Lanham Retail Parks (Southern) Limited
Capital and Lanham Retail Parks Developments Limited
Capital and Lanham Scotland Limited
Capital and Lanham Wembley Limited
Capital and Regional Out-of-Town Ltd
Sports Villages (Milton Keynes) Ltd
Sports Villages Developments Ltd (50% owned)

Lanham Holdings (Stratford) Limited

Capital and Regional Investments Ltd
Capital and Regional Property Management Ltd
Capital and Lanham Retail Parks Limited
Capital and Regional (Norwich) Ltd



OUTSIDE DIRECTORSHIPS

Zedmate Ltd
Zedmate Developments Ltd
Zedmate Developments (Beckenham) Ltd
Zedmate Developments (Battersea) Ltd
Zedmate Developments (Southern) Ltd
Zedmate Developments (Oxford) Ltd
Zedmate Developments Thanet Ltd
Zedmate Developments (NUL) Ltd
Zedmate Developments (Camarthan) Ltd
Zedmate Developments (Pittlochry) Ltd
Zedmate Northern Ltd
Zedmate Developments (Leamington Spa) Ltd
Zedmate Developments (Barnsley) Ltd
Zedmate Developments (Perth) Ltd
Zedmate Intown Ltd
Zedmate International Developments Ltd
Zedmate Developments (Wolverhampton) Ltd
Zedmate Developments (Middletown) Ltd
Zedmate Developments Paisley Ltd
Zedmate Retail Parks (Coventry) Ltd

West 1 on One Limited